



By-law 2018-35

A by-law to dedicate certain lands as
part of the highways of the City of Markham

Whereas Part of Lot 14, Plan 2382, designated as Part 1, Plan 65R-10684, Part of Block 8, Plan M2029, designated as Part 1, Plan 65R-34810 and Part of Block 3, 65-M2029, designated as Part 2, Plan 65R-33618 in the City of Markham, Regional Municipality of York were conveyed to The Corporation of the City of Markham for public use;

Now therefore the Council of The Corporation of the City of Markham hereby enacts as follows:

1. That Part of Lot 14, Plan 2382, designated as Part 1, Plan 65R-10684, in the City of Markham, Regional Municipality of York is hereby established and laid out as part of the public highways of the City of Markham and named John Street.
2. That Part of Block 8, Plan M-2909, designated as Part 1, Plan 65R-34810 in the City of Markham, Regional Municipality of York is hereby established and laid out as part of the public highways of the City of Markham and named Allstate Parkway.
3. That Part of Block 3, Plan 65M-2909, designated as Part 2, Plan 65R-33618 in the City of Markham, Regional Municipality of York is hereby established and laid out as part of the public highways of the City of Markham and named Centurian Drive.

Read a first, second, and third time and passed on May 1, 2018.

A handwritten signature in black ink, appearing to read 'Martha Pettit'.

Martha Pettit
Deputy Clerk

A handwritten signature in black ink, appearing to read 'Frank Scarpitti'.

Frank Scarpitti
Mayor



Alistate Pky

PT2 65R-33618

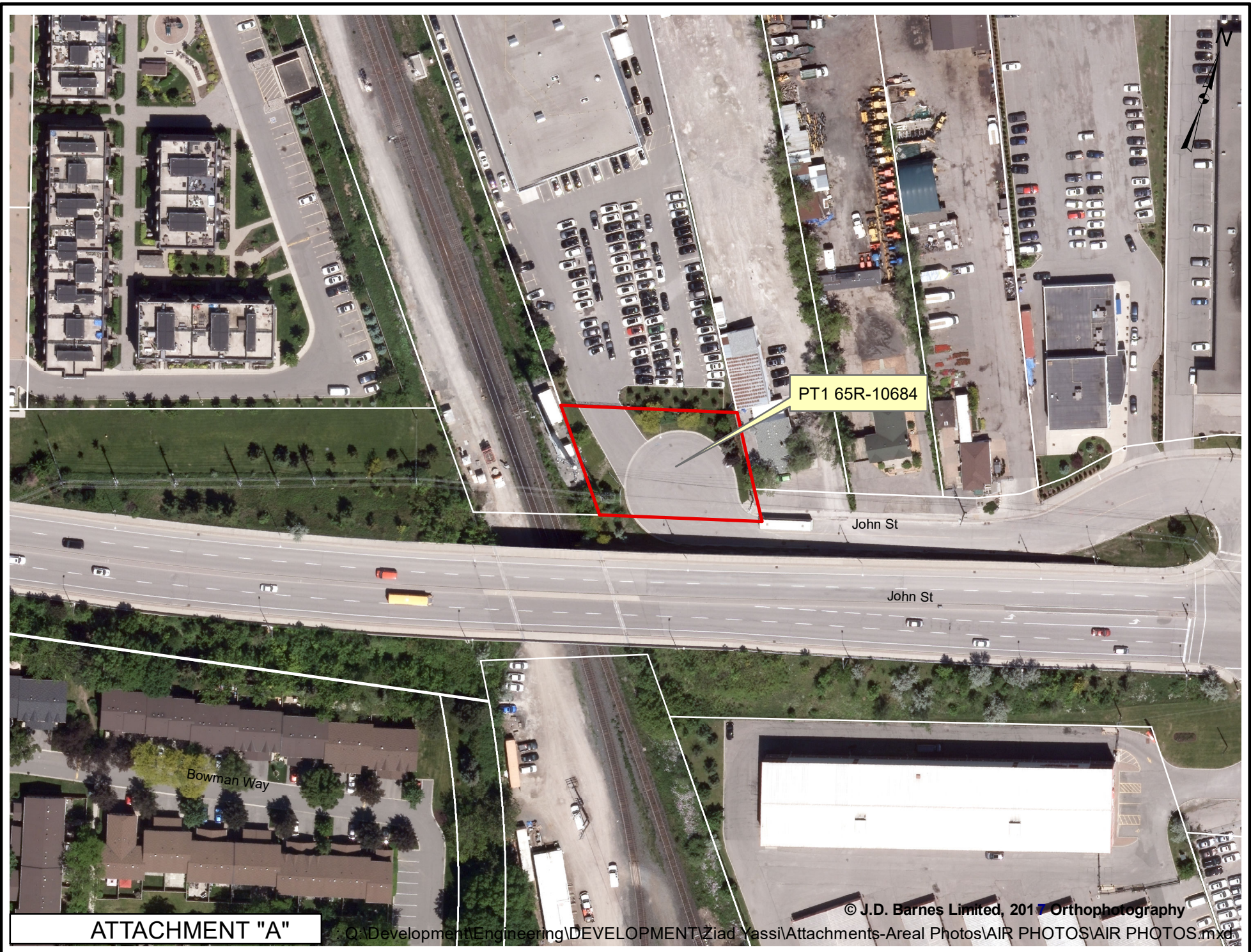
Centurian Dr

PT1 65R-34810

ATTACHMENT "A"

© J.D. Barnes Limited, 2017 Orthophotography

: C:\Development\Engineering\DEVELOPMENT\Ziad Yassir\Attachments-Areal Photos\AIR PHOTOS\AIR PHOTOS.mxd



PT1 65R-10684

John St

John St

Bowman Way

ATTACHMENT "A"

© J.D. Barnes Limited, 2011 Orthophotography

Q:\Development\Engineering\DEVELOPMENT\Ziad Yassi\Attachments-Areal Photos\AIR PHOTOS\AIR PHOTOS.mxd