

WARD 1 PROFILE

Description:

Commencing at a point where the centre line of Steeles Avenue intersects with the centre line of Yonge Street; then proceeding northerly along the centre line of Yonge Street to a point where the centre line of Yonge Street intersects with the centre line of Highway 7; thence proceeding easterly along the centre line of Highway 7 to a point where the centre line of Bayview Avenue intersects with the centre line of Highway 7; thence proceeding southerly along the centre line of Bayview Avenue to the point where the centre line of Bayview Avenue intersects with the centre line of the CNR rail line; thence proceeding south-easterly along the CNR rail line to the point where the CNR rail line intersects with the centre line of Steeles Avenue; and thence proceeding westerly along the centre line of Steeles Avenue to the point of commencement.

Population/Electors(Estimated/Projected)

Population projection estimates are from the Development Charges Review. These estimates are based on applying a standard Town-wide persons-per-unit(ppu) value to the projected total units.

Year	2003	2006	2009	2012	Change 2003 to 2012
Population	28650	28300	27700	27400	-1250
Electors	18769	18537	18144	17947	-822

Points of Interest:

Thornhill Community

GO Station, Langstaff

Fire Station 91, 7801 Bayview Avenue

Thornhill Community Centre and Library

Thornhill Cemetery, John Street and Church Lane

Holy Cross Catholic Cemetery

Ladies Golf Club of Toronto

Historical Interests:

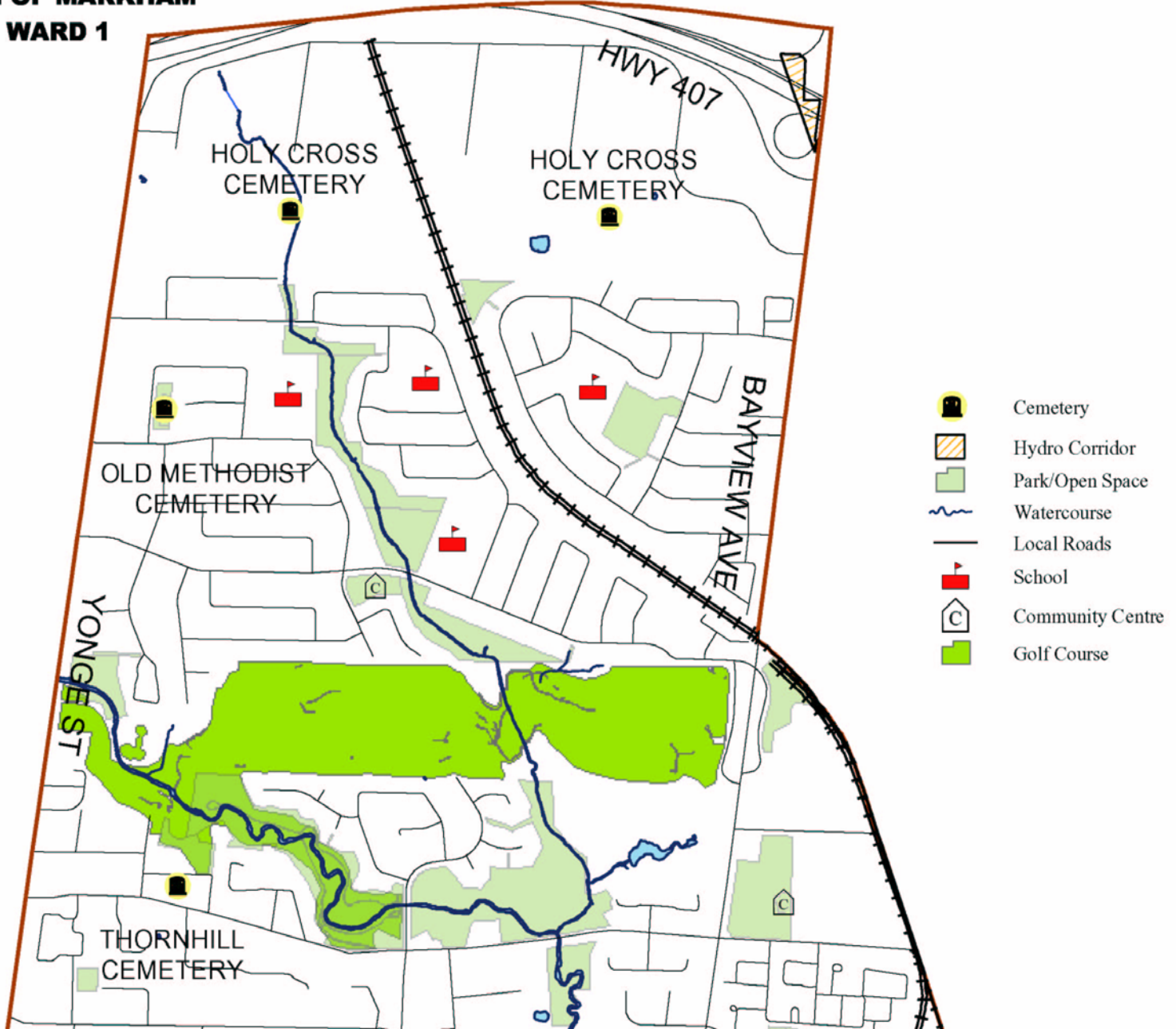
Thornhill Methodist Cemetery

Heintzman House

Library, Colbourne Street

John Welsh House(known as Thornlea), 288 John Street

**TOWN OF MARKHAM
WARD 1**



WARD 2 PROFILE

Description:

Commencing at a point where the centre line of the CNR rail line intersects with the centre line of Steeles Avenue; then proceeding north-westerly along the CNR rail line to the point where the centre line of Bayview Avenue intersects with the centre line of the CNR rail line; thence proceeding northerly along the centre line of Bayview Avenue to a point where the centre line of Bayview Avenue intersects with the centre line of Highway 7; thence proceeding easterly along the centre line of Highway 7 to a point where the centre line of Highway 404 intersects with the centre line of Highway 7; thence proceeding southerly along the centre line of Highway 404 to a point where the centre line of Steeles Avenue intersects with the centre line of Highway 404; and thence proceeding westerly along the centre line of Steeles Avenue to the point of commencement.

Population/Electors(Estimated/Projected)

Population projection estimates are from the Development Charges Review. These estimates are based on applying a standard Town-wide persons-per-unit(ppu) value to the projected total units.

Year	2003	2006	2009	2012	Change 2003 to 2012
Population	24500	25100	26150	27300	2800
Electors	16921	17319	18044	18837	1916

Points of Interest:

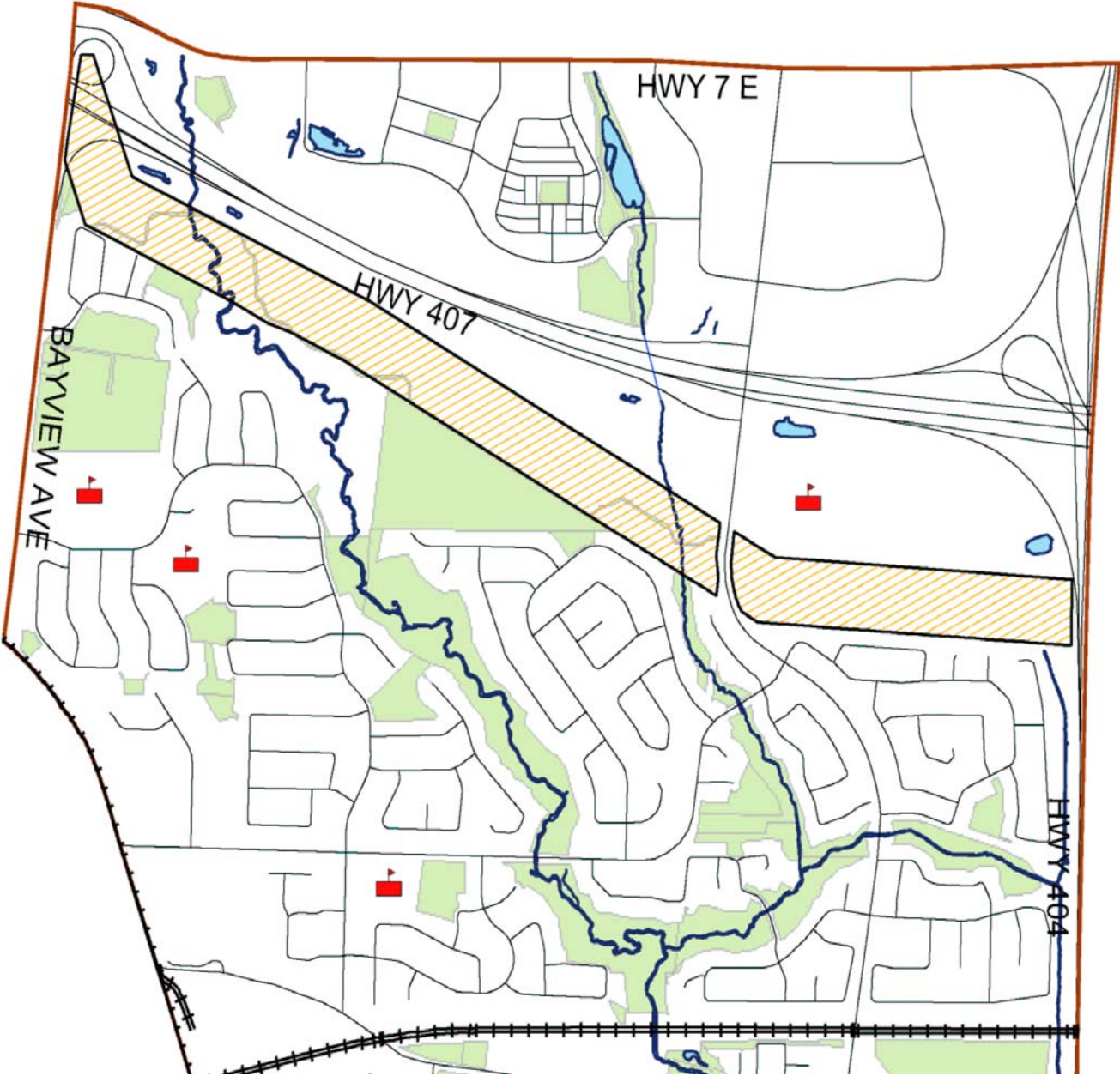
Thornhill Community
Thornlea Community

R.J. Clatworthy Arena
Bayview Golf and Country Club
German Mills Community Centre
Hydro Corridor

Historical Interests:

German Mills Heritage School, 80 German Mills Road
German Mills Settlers Park and Historical Plaque

TOWN OF MARKHAM
WARD 2



WARD 3 PROFILE

Description:

Commencing at a point where the centre line of the Hydro Corridor south of Highway 407 intersects with the centre line of Warden Avenue; then proceeding northerly along the centre line of Warden Avenue to a point where the centre line of Warden Avenue intersects with the centre line of 16th Avenue; thence proceeding easterly along the centre line of 16th Avenue to a point where the centre line of Kennedy Road intersects with the centre line of 16th Avenue; thence proceeding northerly along the centre line of Kennedy Road to a point where the centre line of Kennedy Road intersects with the Markham/Whitchurch-Stouffville boundary line; thence proceeding easterly along the Markham/Whitchurch-Stouffville boundary line to a point where the Markham/Whitchurch-Stouffville boundary line intersects the centre line of McCowan Road; thence southerly along the centre line of McCowan Road to a point where the centre line of McCowan Road intersects the centre line of the Hydro Corridor south of Highway 407; and thence proceeding westerly along the centre line the Hydro Corridor to the point of commencement.

Population/Electors(Estimated/Projected)

Population projection estimates are from the Development Charges Review. These estimates are based on applying a standard Town-wide persons-per-unit(ppu) value to the projected total units.

Year	2003	2006	2009	2012	Change 2003 to 2012
Population	40050	44800	48100	56850	16800
Electors	28511	31898	34200	40477	11966

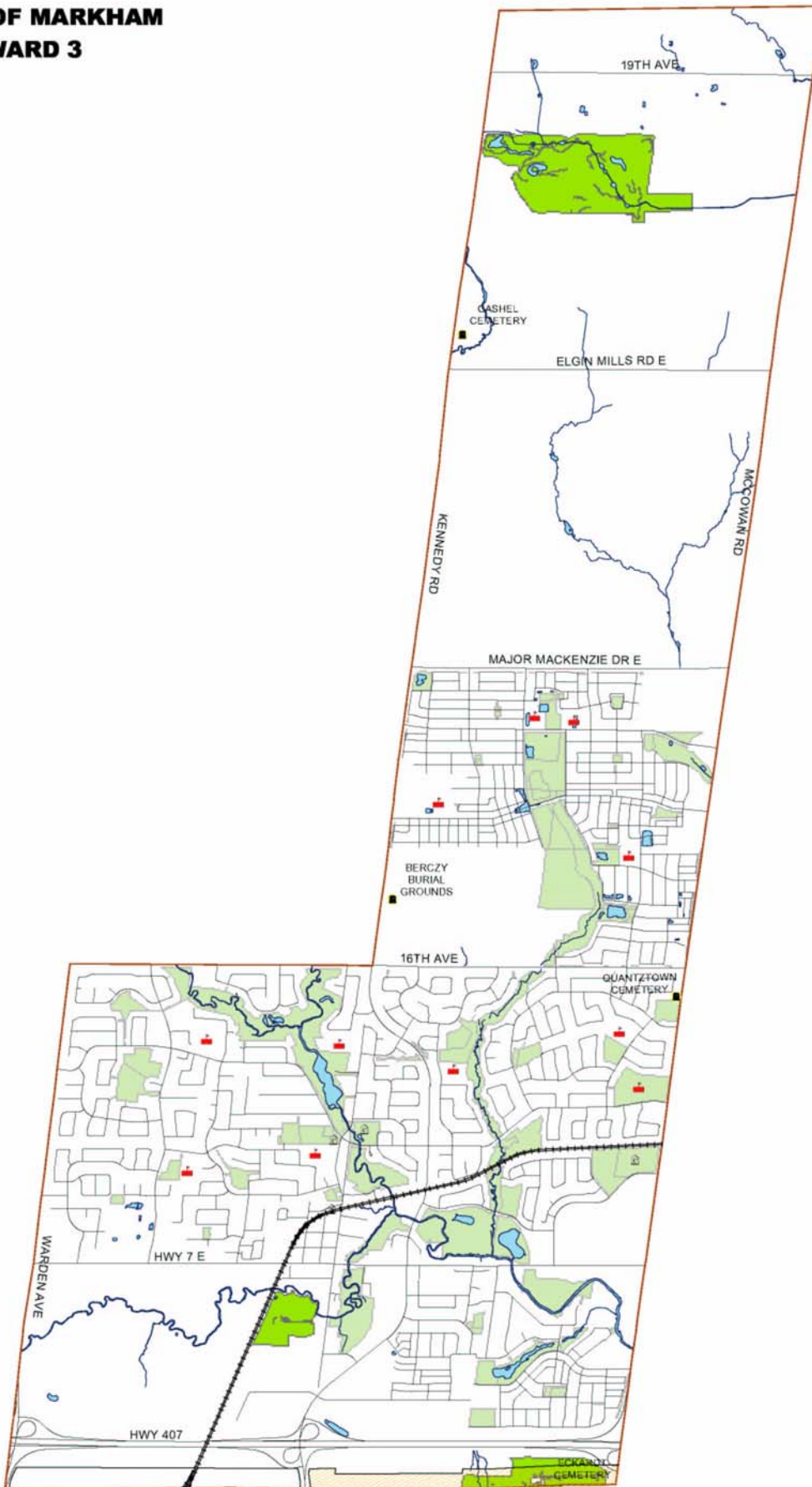
Points of Interest:

Unionville BIA	Main Street Unionville
Centennial GO Station	City Centre Development
Centennial Community Centre	Markville Mall
Frederick Horsman Varley Art Gallery	Crosby Community Centre
Old Unionville Library Community Centre and Unionville Library	Kathleen McKay Gallery
Unionville Golf Centre	Toogood Pond
Manderin Golf and Country Club	Cresthaven Golf Course

Historical Interests:

Unionville Train Station	Quantztown Cemetery
Main Street Unionville	Cashel Cemetery

TOWN OF MARKHAM WARD 3



-  Cemetery
-  Hydro Corridor
-  Park/Open Space
-  Watercourse
-  Local Roads
-  School
-  Community Centre
-  Golf Course

WARD 4 PROFILE

Description:

Commencing at a point where the centre line of the Hydro Corridor south of Highway 407 intersects with the centre line of McCowan Road; then proceeding northerly along the centre line of McCowan Avenue to a point where the centre line of McCowan Road intersects with the Markham/Whitchurch-Stouffville town line; thence easterly along the Markham/Whitchurch-Stouffville town line to a point where the Markham/Whitchurch-Stouffville town line intersects with the centre line of 9th Line; thence proceeding southerly along the centre line of 9th Line to the point where the centre line of 9th Line intersects with the centre line of 16th Avenue; thence proceeding westerly along the centre line of 16th Avenue to a point where the centre line of 16th Avenue intersects with the centre line of Main Street Markham; thence proceeding southerly along the centre line of Main Street Markham to a point where the centre line of Main Street Markham intersects with the centre line of the Hydro Corridor; and thence proceeding westerly along the centre line of the Hydro Corridor to the point of commencement.

Population/Electors(Estimated/Projected)

Population projection estimates are from the Development Charges Review. These estimates are based on applying a standard Town-wide persons-per-unit(ppu) value to the projected total units.

Year	2003	2006	2009	2012	Change 2003 to 2012
Population	31100	34900	38100	41800	10700
Electors	15538	17450	19050	20900	5362

Points of Interest:

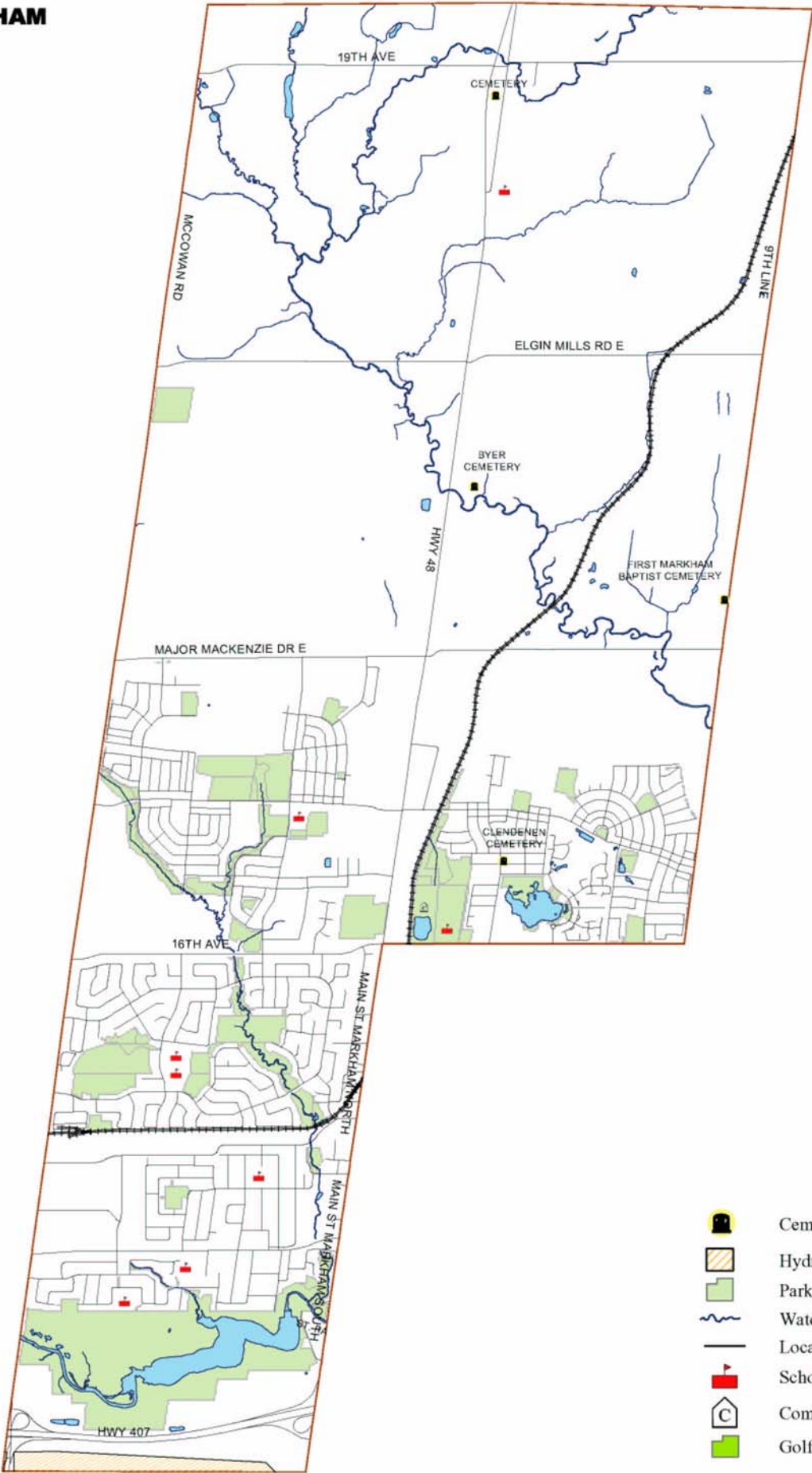
Main Street Markham-West side

Markham Village BIA
Markham GO Station/Markham Train Station
Mount Joy GO Station
Markham Airport
Mount Joy Community Centre
Markham Heritage Estates
Markham Museum and Historic Village
Markham Fairgrounds
Milne Park

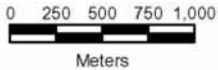
Historical Interests:

Markham Train Station	Byer Cemetery
First Baptist Cemetery	Clendennen Cemetery

**TOWN OF MARKHAM
WARD 4**



-  Cemetery
-  Hydro Corridor
-  Park/Open Space
-  Watercourse
-  Local Roads
-  School
-  Community Centre
-  Golf Course



WARD 5 PROFILE

Description:

Commencing at a point where the centre line of Markham Road/Main Street Markham intersects with the centre line of the CNR rail line; then proceeding northerly along the centre line of Markham Road/Main Street Markham to a point where the centre line of Markham Road/Main Street Markham intersects with the centre line of 16th Avenue; thence proceeding easterly along the centre line of 16th Avenue to a point where the centre line of 16th Avenue intersects with the centre line of 9th Line; thence proceeding northerly along the centre line of 9th Line to a point where centre line of 9th Line intersects the Markham/Whitchurch-Stouffville Town line; thence easterly along the Markham/Whitchurch-Stouffville Town line to a point where the Markham/Whitchurch-Stouffville Town line intersects the centre line of the York Durham Town line; thence proceeding southerly along the centre line of the York Durham Town line to a point where the centre line of Steeles Avenue intersects with the centre line of York Durham Town line; thence westerly along the centre line of Steeles Avenue to a point where the centre line of Steeles Avenue intersects the centre line of the CNR rail line; and thence north-westerly along the centre line of the CNR rail line to the point of commencement.

Population/Electors(Estimated/Projected)

Population projection estimates are from the Development Charges Review. These estimates are based on applying a standard Town-wide persons-per-unit(ppu) value to the projected total units.

Year	2003	2006	2009	2012	Change 2003 to 2012
Population	32000	34450	37100	40650	8650
Electors	21672	23323	25117	27520	5848

Points of Interest:

Main Street Markham – East side

Markham BIA

Markham Village Community Centre

Markham-Stouffville Hospital

Cedar Grove Community

Fire Station 97, 209 Main Street

Bushwood Golf Course

Markham Village Library

Box Grove Community

Locust Hill Community

Markham By-pass

Markham Green Golf Course

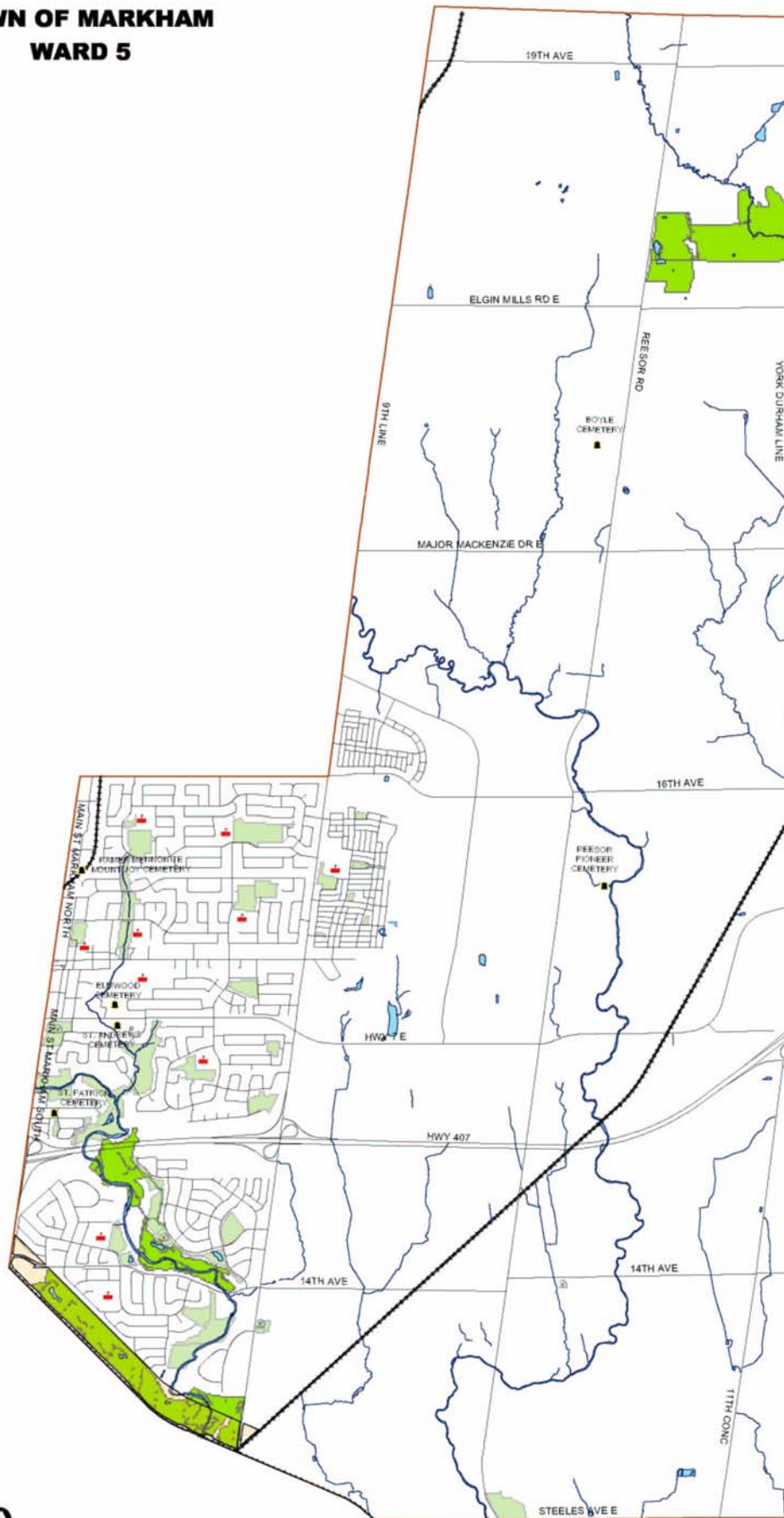
Historical Interests:

Main Street Markham

Wurtz Cemetery

Reesor Cemetery,

TOWN OF MARKHAM WARD 5



-  Cemetery
-  Hydro Corridor
-  Park/Open Space
-  Watercourse
-  Local Roads
-  School
-  Community Centre
-  Golf Course

WARD 6 PROFILE

Description:

Commencing at a point where the centre line of Hydro Corridor south of Highway 407 intersects with the centre line of Highway 404; then proceeding northerly along the centre line of Highway 404 to a point where the centre line of Highway 404 intersects with the Markham/Whitchurch-Stouffville Town line; thence easterly along the Markham/ Whitchurch-Stouffville Town line to a point where the Markham/Whitchurch-Stouffville Town line intersects with the centre line of Kennedy Road; thence proceeding southerly along the centre line of Kennedy Road to a point where the centre line of Kennedy Road intersects the centre line of 16th Avenue; thence westerly along the centre line of 16th Avenue to a point where the centre line of 16th Avenue intersects the centre line of Warden Avenue; thence southerly along the centre line of Warden Avenue to a point where the centre line of Warden Avenue intersects with the centre line of the Hydro Corridor; and thence westerly along the centre line of the Hydro Corridor to the point of commencement.

Population/Electors(Estimated/Projected)

Population projection estimates are from the Development Charges Review. These estimates are based on applying a standard Town-wide persons-per-unit(ppu) value to the projected total units.

Year	2003	2006	2009	2012	Change 2003 to 2012
Population	24150	26100	27100	29400	5250
Electors	17749	19184	19919	21609	3860

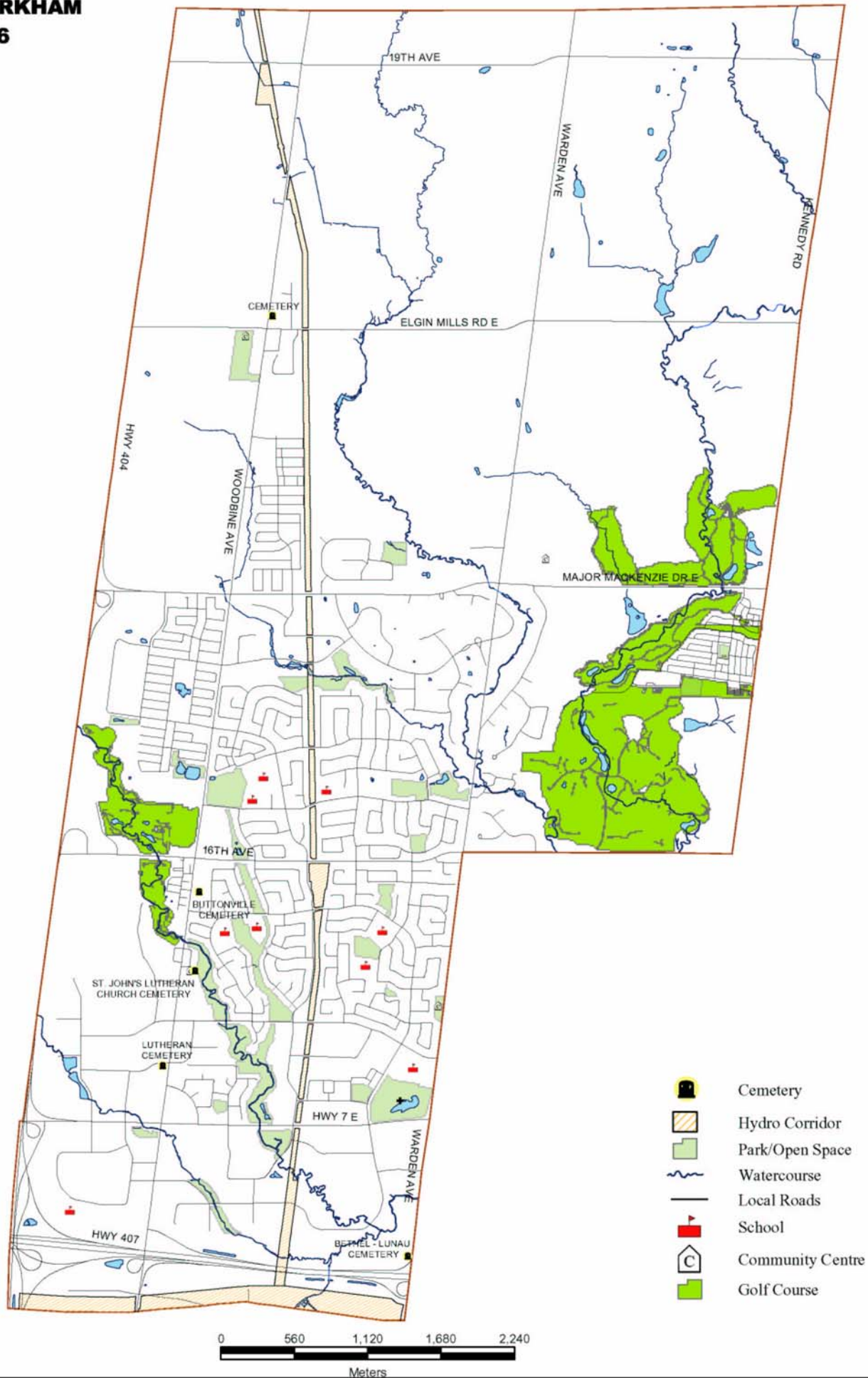
Points of Interest:

Markham Civic Centre
Markham City Centre Development
Angus Glen Library and Community Centre
Angus Glen Golf Club
Markham Golf and Country Club
York Downs Golf and Country Club
Buttonville Fairways Golf Course
Victoria Square Community
Buttonville Airport
Hydro Corridor

Historical Interests:

Buttonville Cemetery,
St. John's Lutheran Cemetery
Bethel-Lunau Cemetery

TOWN OF MARKHAM WARD 6



WARD 7 PROFILE

Description:

Commencing at a point where the centre line of Steeles Avenue intersects with the centre line of Brimley Road; then proceeding northerly along the centre line of Brimley Road to a point where the centre line of Brimley Road intersects with the centre line of 14th Avenue; thence proceeding easterly along the centre line of 14th Avenue to a point where the centre line of 14th Avenue intersects the centre line of McCowan Road/Old McCowan Road; thence northerly along the centre line of Old McCowan Road to a point where the centre line of Old McCowan Road intersects the centre line of the Hydro Corridor; thence proceeding easterly along the centre line of the Hydro Corridor projected to a point where the line intersects with the centre line of Markham Road; thence southerly along the centre line of Markham Road to a point where the centre line of Markham Road intersects with the centre line of the CNR rail line, thence south-easterly along the centre line of the CNR rail line to a point where the centre line of the CNR rail line intersects with the centre line of Steeles Avenue; and thence westerly along the centre line of Steeles Avenue to the point of commencement.

Population/Electors(Estimated/Projected)

Population projection estimates are from the Development Charges Review. These estimates are based on applying a standard Town-wide persons-per-unit(ppu) value to the projected total units.

Year	2003	2006	2009	2012	Change 2003 to 2012
Population	30100	31000	32200	33850	3750
Electors	22614	23281	24182	25421	2807

Points of Interest:

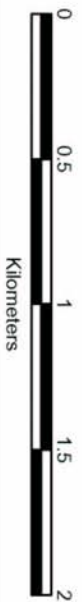
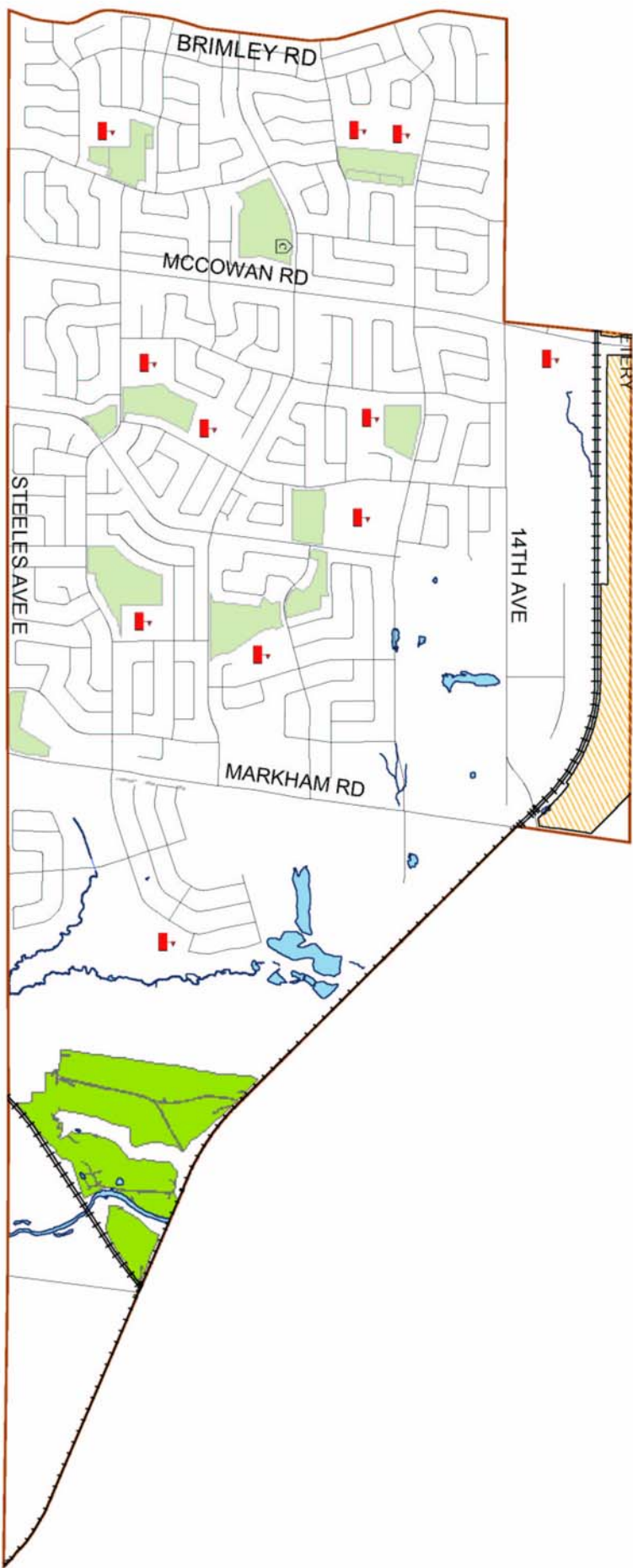
Milliken Community
Markham Road South
Fire Station 96, 5567 14th Avenue
Armada Community Centre
Parkview Golf course

Historical Interests:

Daniels-Fairty House, Markham Road
Netherlands Reformed Church(originally school, S.S.#14), 5650 14th Avenue
Milne-Freeman Farm Houses, 6470 & 6472 Steeles Avenue

TOWN OF MARKHAM

WARD 7



-  Cemetery
-  Hydro Corridor
-  Park/Open Space
-  Watercourse
-  Local Roads
-  School
-  Community Centre
-  Golf Course

WARD 8 PROFILE

Description:

Commencing at a point where the centre line of Steeles Avenue intersects with the centre line of Highway 404; then proceeding northerly along the centre line of Highway 404 to a point where the centre line of Highway 404 intersects with the centre line of the Hydro Corridor south of Highway 407; thence proceeding easterly along the centre line of the Hydro Corridor to a point where the centre line of the Hydro Corridor intersects with the centre line of Old McCowan Road; thence southerly along the centre line of Old McCowan Road projected south to a point where Old McCowan Road projected intersects the centre line of 14th Avenue; thence proceeding westerly along the centre line of 14th Avenue to a point where the centre line of 14th Avenue intersects the centre line of Brimley Road; thence southerly along the centre line of Brimley Road to a point where the centre line of Brimley Road intersects the centre line of Steeles Avenue; and thence westerly along the centre line of Steeles Avenue to the point of commencement.

Population/Electors(Estimated/Projected)

Population projection estimates are from the Development Charges Review. These estimates are based on applying a standard Town-wide persons-per-unit(ppu) value to the projected total units.

Year	2003	2006	2009	2012	Change 2003 to 2012
Population	19100	18700	18700	19400	300
Electors	16036	15708	15708	16296	260

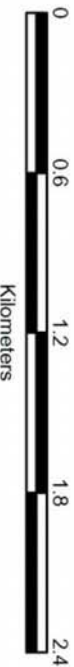
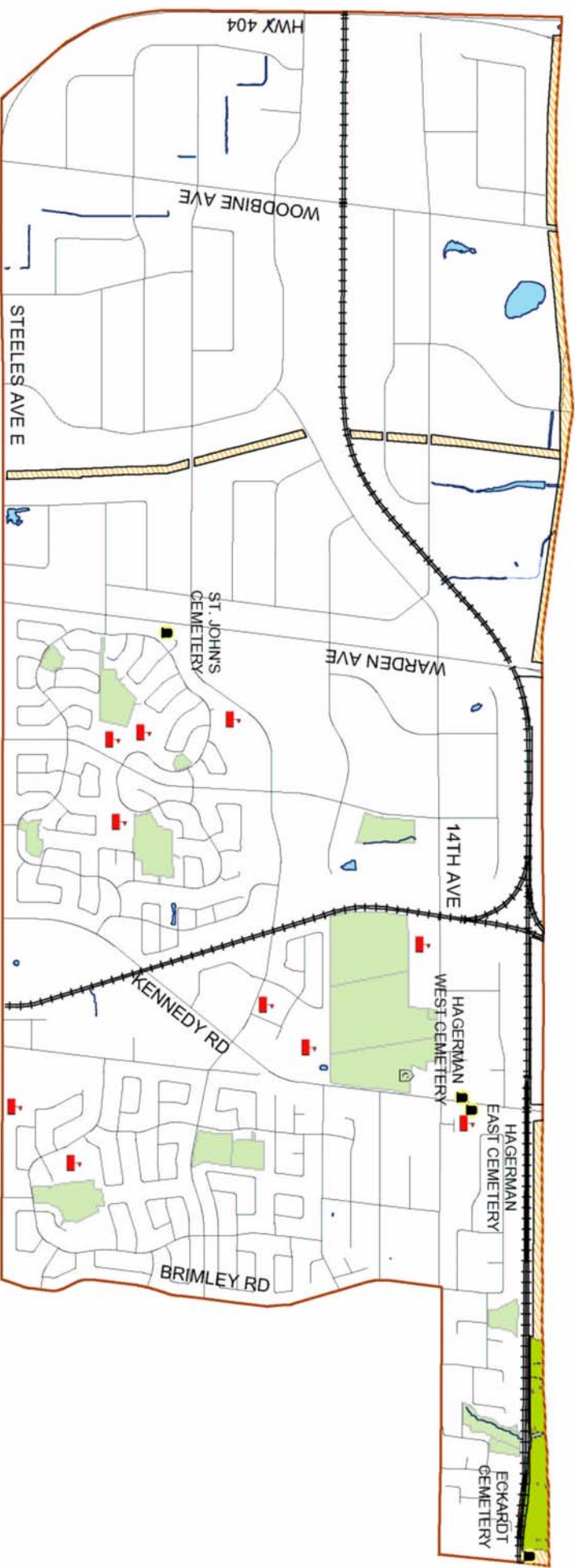
Points of Interest:

Pacific Mall
Milliken GO station
Fire Station 94, 7300 Birchmount Road
Fire Station 92, Riviera Drive
Cresthaven Golf Course
Milliken Mills Community Centre & Library
Esna Industrial District
Hydro Corridor

Historical Interests:

Eckardt Cemetery
Hagerman East and West Cemeteries
St. John's Cemetery
Hagerman School House

TOWN OF MARKHAM WARD 8



- Cemetery
- Hydro Corridor
- Park/Open Space
- Watercourse
- Local Roads
- School
- Community Centre
- Golf Course