

EXPLANATORY NOTE

BY-LAWS 2008-243 AND 2008-244

A by-law to amend By-law 304-87, as amended and By-law 177-96, as amended

Angus Glen Farm Ltd. & Angus Glen Golf Club Ltd.
West Village (Phase 1) 19TM-030004
Part of Lots 19 and 20, Concession 5
Lots 5, 6 and 7 on 65M-4086

LANDS AFFECTED

The by-laws apply to Lots 5, 6 and 7 on 65M-4086, municipally known as 81, 83 and 85 Glengordon Crescent.

EXISTING ZONING

The lands subject to this By-law are presently zoned Agriculture One (A1) under By-law 304-87, as amended.

PURPOSE AND EFFECT

The purpose of these amendments is to delete the lands from Agriculture One (A1) under By-law 304-87, as amended, and to incorporate the lands into By-law 177-96, as amended, under the Residential Two (R2) zone, similar to the surrounding lands. This would allow for the construction of three single detached houses.



BY-LAW 2008-243

A by-law to amend Zoning By-law 304-87, as amended

THE COUNCIL OF THE CORPORATION OF THE TOWN OF MARKHAM
HEREBY ENACTS AS FOLLOWS:

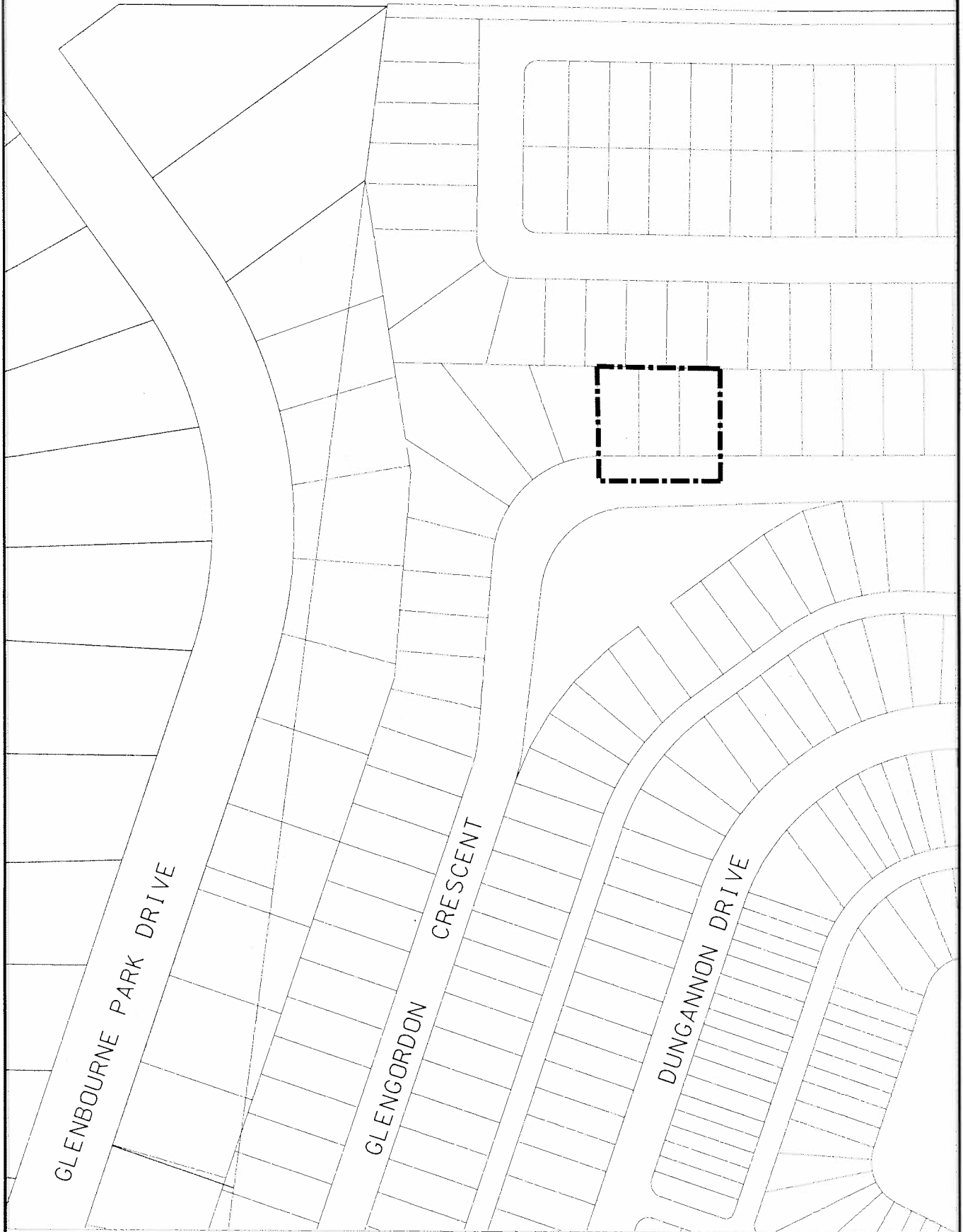
1. By-law 304-87, as amended, be and the same is hereby further amended by deleting the lands outlined on Schedule 'A' hereto from the designated area of By-law 304-87, as amended.
2. This by-law shall not come into force until By-law 2008-244, amending By-law 177-96, as amended, comes into force and the subject lands of this by-law become incorporated into the designated area of By-law 177-96, as amended.
3. All other provisions of By-law 304-87, as amended, not inconsistent with the provisions of this by-law shall continue to apply.

READ A FIRST, SECOND, AND THIRD TIME AND PASSED THIS
25TH DAY OF NOVEMBER, 2008.

KIMBERLEY KITTERINGHAM
TOWN CLERK

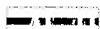
FRANK SCARPITTI
MAYOR

MAJOR MacKENZIE DRIVE EAST



DEVELOPMENT SERVICES COMMISSION

A BY-LAW TO AMEND BY-LAW 304-87



BOUNDARY OF AREA COVERED BY THIS BY-LAW

THIS IS SCHEDULE 'A' TO BY-LAW ...2008-243
PASSED THIS 25TH..... DAY ..NOV....., 2008

Paul Scarpitta..... MAYOR
[Signature]..... CLERK

NOTE: 1) DIMENSIONS ARE IN METRES
2) REFERENCE SHOULD BE MADE TO
THE ORIGINAL BY-LAW LODGED IN
THE OFFICE OF THE CLERK

SCALE 1: 2000