

## **EXPLANATORY NOTE**

### **BY-LAW 2010-169**

A By-law to amend By-law 88-76, as amended.

H. Roy Gray Limited  
135 Anderson Avenue  
Part of Lot 18, Concession 8

### **LANDS AFFECTED**

The proposed by-law amendment applies to a 0.42 ha (1.03 ac) parcel of land located on the east side of Anderson Avenue, north of Bur Oak Avenue.

### **EXISTING ZONING**

The lands subject to this amendment are currently zoned Select Industrial & Warehousing (M.I.) in By-law 88-76, as amended.

### **PURPOSE AND EFFECT OF THE BY-LAW**

The purpose and effect of this By-law is to permit retail sales accessory to a principal industrial use and for the accessory retail use to not to exceed 10 percent (10%) of the total gross floor area of the premises of an individual industrial establishment.

---



## **BY-LAW 2010-169**

A by-law to amend By-law 88-76, as amended

---

THE COUNCIL OF THE CORPORATION OF THE TOWN OF MARKHAM  
HEREBY ENACTS AS FOLLOWS:

1. THAT By-law 88-76, as amended, is hereby further amended as it applies to the lands outlined on Schedule 'A' as follows:

- 1.1 Additional permitted use

The following additional use is permitted:

- a) Retail sales accessory to a permitted industrial use.
    - b) Repair and /or service of internal combustion engines accessory to a permitted industrial use, but not including automobile or truck repair and/or service.

- 1.2 Special Site Provisions

The following additional provisions shall apply:

- a) Retail sales and repair and/or service of internal combustion engines shall only be permitted if accessory to the principal industrial use on the same PREMISES and subject to the following provisions:
      - i) The FLOOR AREA devoted to the retail sales shall not exceed 10 percent (10%) of the total GROSS FLOOR AREA of the PREMISES of an individual industrial establishment.
      - ii) The FLOOR AREA devoted to retail sales shall be distinctly and physically separated, by a wall or similar partition, from the balance of the area devoted to the principal industrial use within the PREMISES occupied by the individual establishment.
      - iii) The FLOOR AREA devoted to the repair and /or service of internal combustion engines shall not exceed 10 percent (10%) of the total GROSS FLOOR AREA of the PREMISES of an individual industrial establishment.

2. All other provisions of By-law 88-76, as amended, not inconsistent with the provisions of this by-law shall continue to apply.

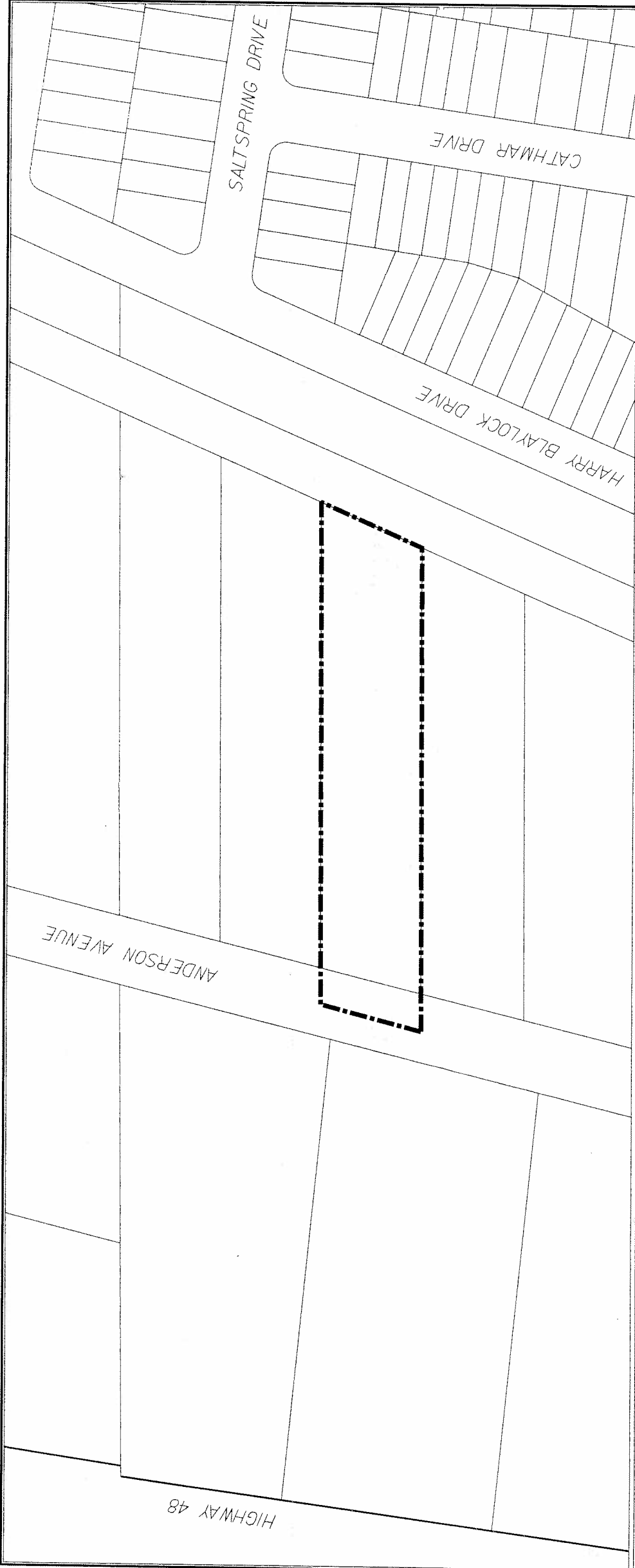
READ A FIRST, SECOND, AND THIRD TIME AND PASSED THIS  
21<sup>ST</sup> DAY OF SEPTEMBER, 2010.



KIMBERLEY KITTERINGHAM  
TOWN CLERK



FRANK SCARPITTI  
MAYOR



DEVELOPMENT SERVICES COMMISSION

THIS IS SCHEDULE 'A' TO BY-LAW 2010-169  
PASSED THIS 21<sup>ST</sup> DAY SEPT. 2010

*Paul Smith* MAYOR

*[Signature]* CLERK

## A BY-LAW TO AMEND BY-LAW

88-76

 BOUNDARY OF AREA COVERED BY THIS BY-LAW

NOTE: 1) DIMENSIONS ARE IN METRES  
2) REFERENCE SHOULD BE MADE TO  
THE ORIGINAL BY-LAW LODGED IN  
THE OFFICE OF THE CLERK

SCALE 1: