



Centennial GO Station Parking Structure

Centennial Community Centre

**General Committee Meeting
Town of Markham**

September 18, 2006



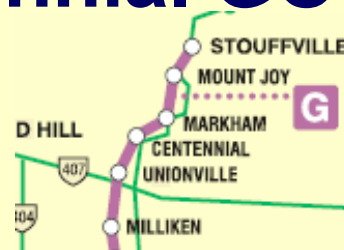
A **tyco** International Ltd. Company

AGENDA

- Background Information
- Parking Structure
- Project Delivery
- Discussion



Centennial GO Station



- Bullock Drive & McCowan Road, Markham, Stouffville Rail Corridor (behind Centennial Community Centre)
- Station in service since September 2002
- Peak Service Facility
- GO Buses serve station at bus stop on Bullock Drive
- 191 parking spaces
- Ticket Vending Machine



QUICK TABLE

Monday - Friday
(Excluding Holidays)

CENTENNIAL UNION

Effective April 29, 2006

416.869.3200
1.888.GET ON GO (438.6646)
TTY teletypewriters only 1.800.387.3652
www.gotransit.com

CENTENNIAL GO STATION

Weekday Service			
Southbound		Northbound	
Depart Centennial	Arrive Union	Depart Union	Arrive Centennial
05:18	05:53	07:40	08:17
06:00	06:35	08:40	09:17
06:22	07:05	09:40	10:12
07:00	07:43	& hourly until	
07:32	08:16	12:40	13:12
08:07	08:50	& every 30 mins. until	
08:45	09:40	14:10	14:42
09:24	10:17	14:40	15:17
09:53	10:36	15:10	15:52
10:28	11:11	16:18	16:57
11:23	12:06	16:48	17:27
12:28	13:11	17:20	18:04
13:23	14:11	18:00	18:39
14:13	15:01	18:30	19:09
15:38	16:32	19:00	19:42
16:28	17:27	19:10	19:47
17:30	18:28	19:40	20:17
19:18	20:16	20:10	20:47
20:43	21:41	& every 30 mins. until	
		22:40	23:12
		23:40	00:12
		00:40	01:12

■ - Train Trip
□ - Bus Trip*

Times subject to change

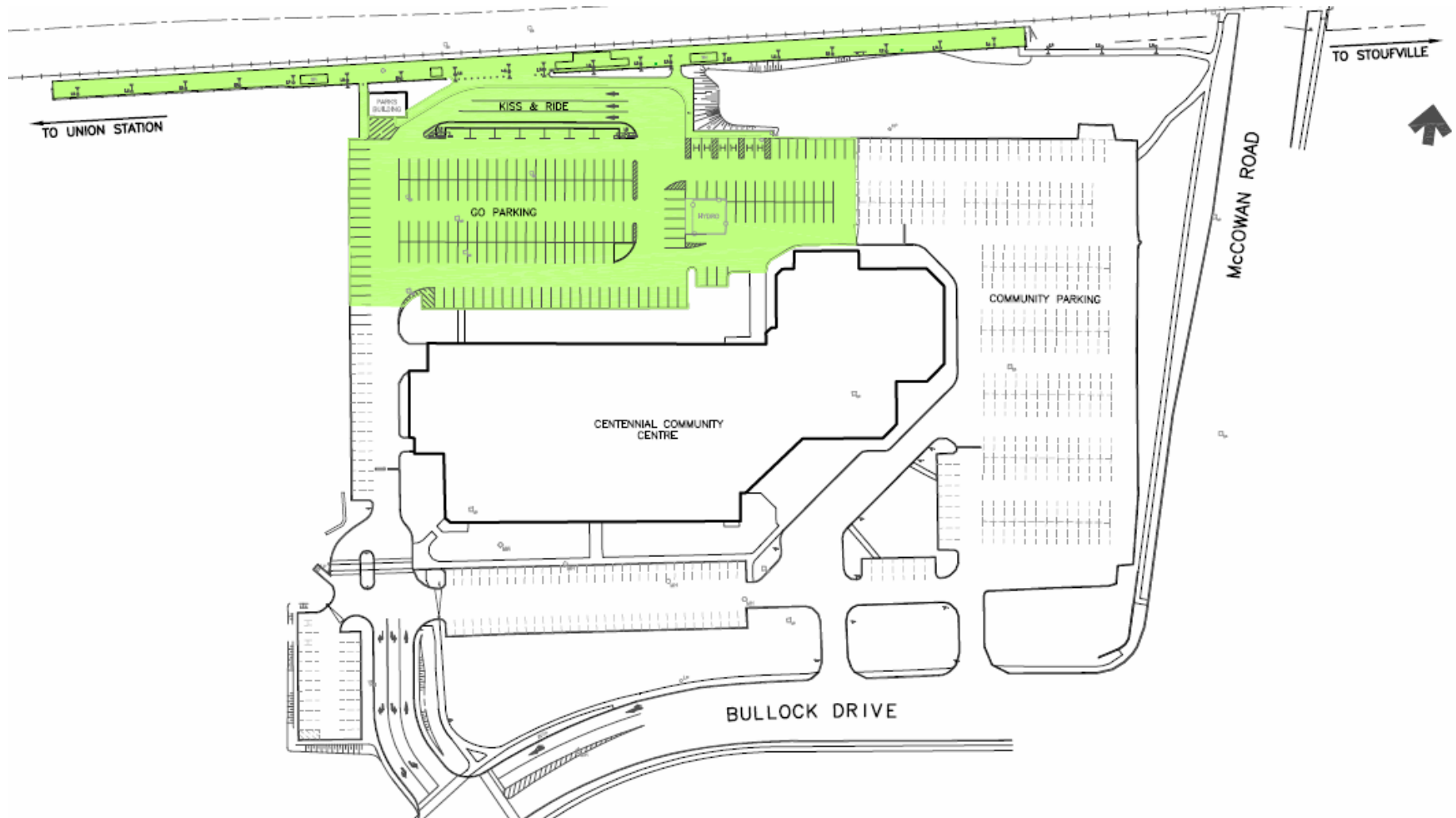
* - Bus serves Centennial GO Station from bus stop on street

Background Information



A **tyco** International Ltd. Company

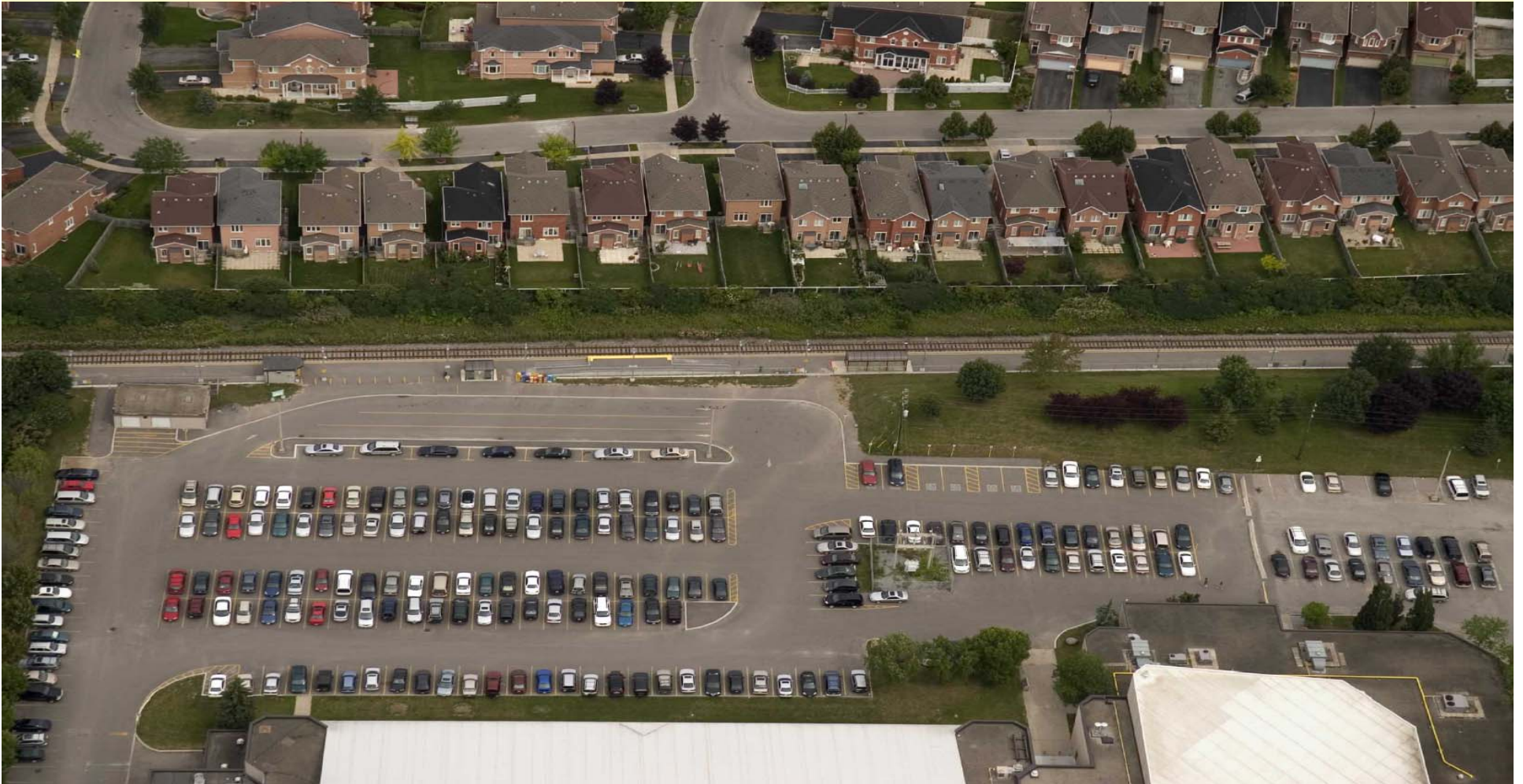
Existing Station Site Plan



Background Information



Existing Station Aerial View



Background Information



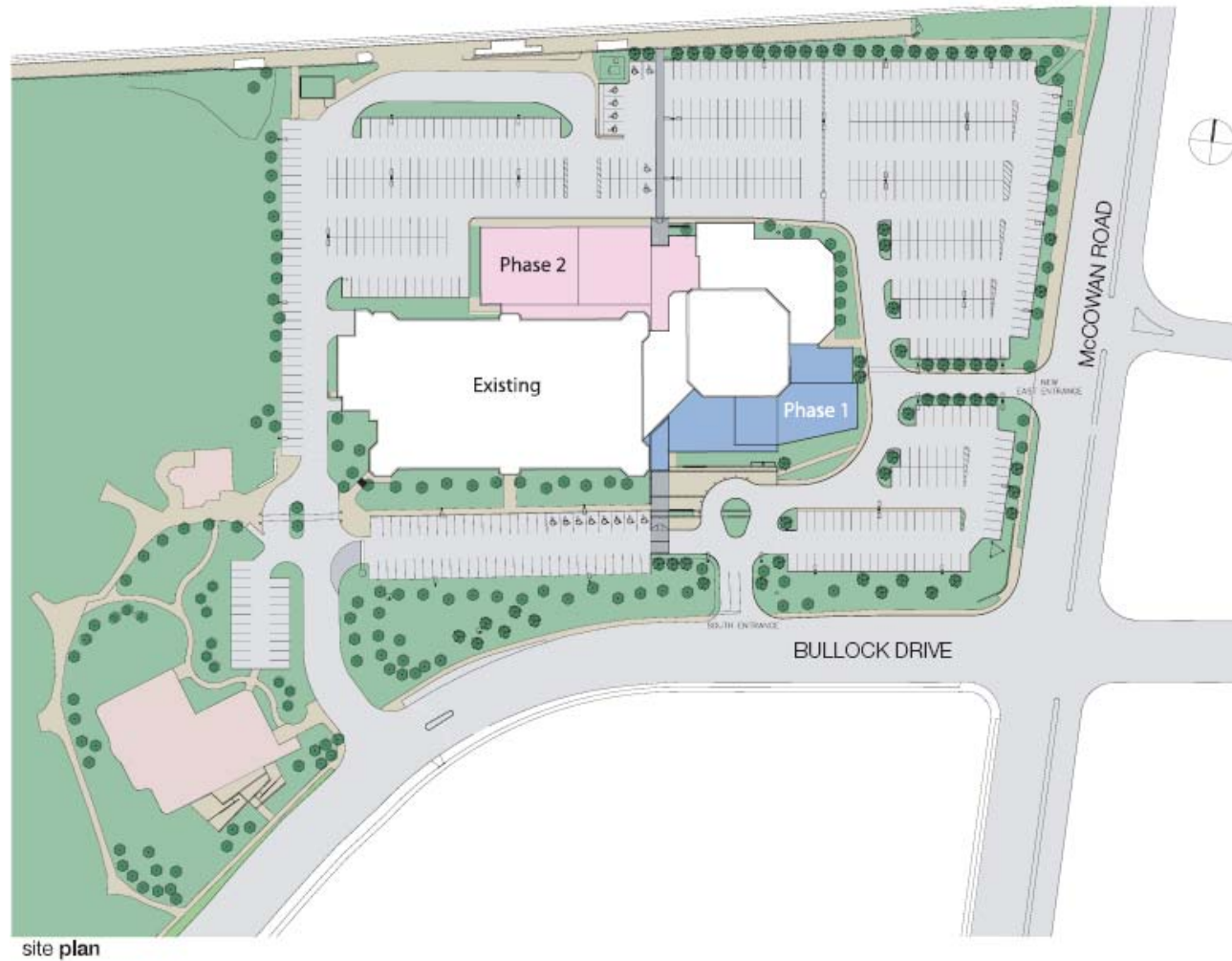
A **tyco** International Ltd. Company



Community Centre Expansion

New Site Plan

courtesy of Oleson Worland_Taylor Smyth architects



Background Information



A **tyco** International Ltd. Company

Parking Structure Need



- since inception, parking lot has been at 98% to 100% capacity
- grade parking at maximum developmental limits
- rail line ridership growth has resulted in one additional pm train

Background Information



Design Parameters

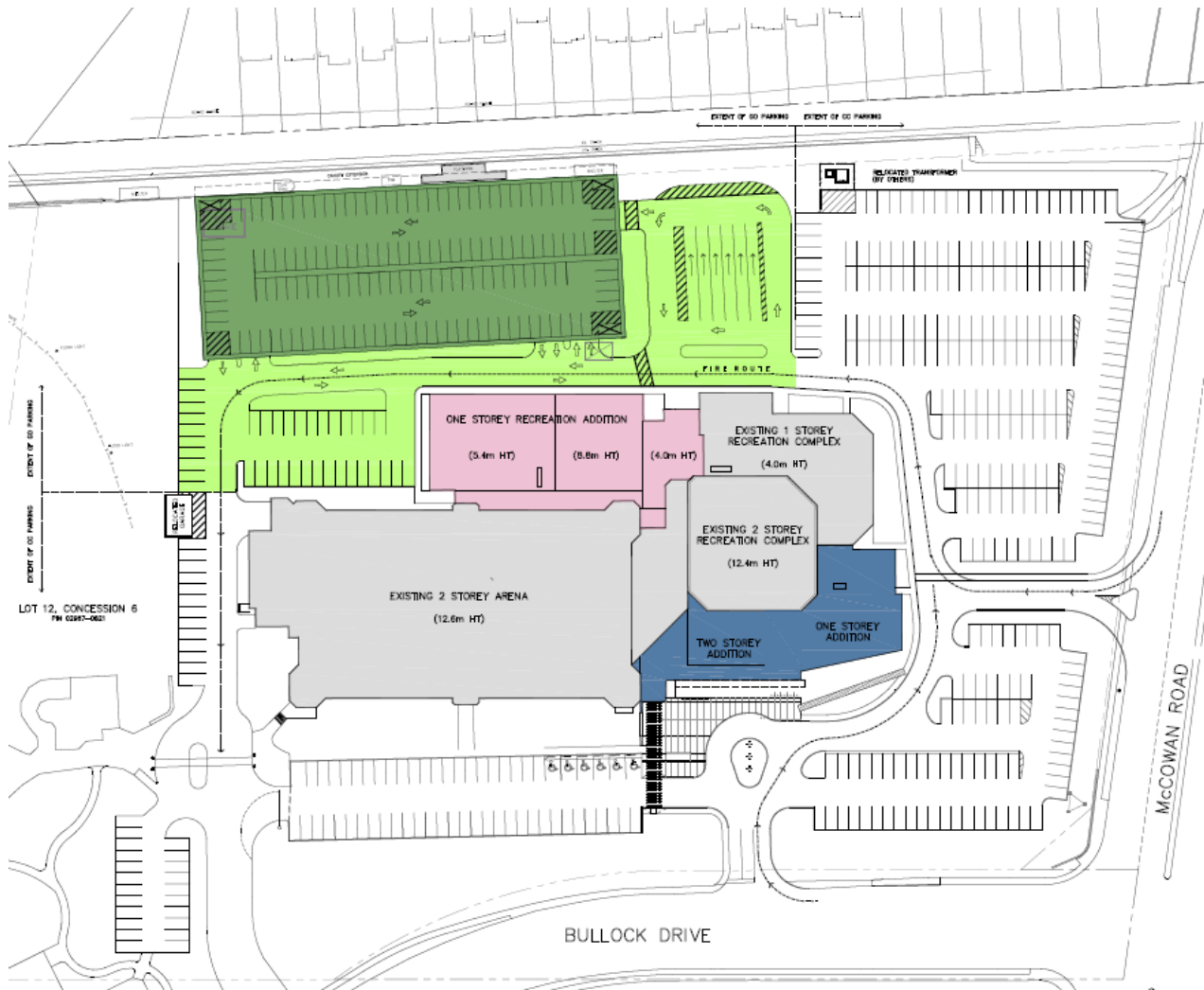
- Safety
- Ease of Use
- Cost Effective
- Low Maintenance
- Platform Accessibility
- Integrated Platform Canopy
- Provision for future pay parking
- Efficient Traffic and Pedestrian Circulation
- Net increase of 200 to 250 Parking Spaces = 390 to 440 GO Spaces
- Aesthetics
- Within existing GO parking limits
- Independent Kiss'N'Ride Area

Parking Structure



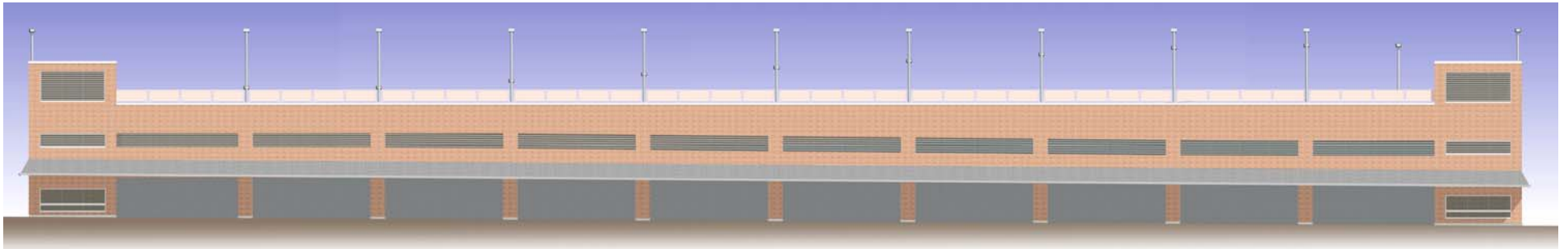
A **tyco** International Ltd. Company

Proposed Location

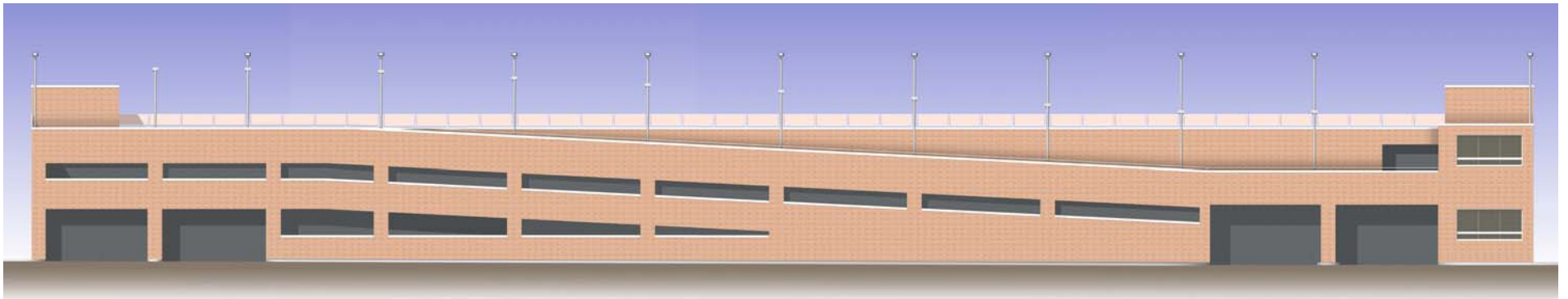


- Borders Rail Platform
- Kiss'n'Ride area adjacent Community Centre north entrance

Parking Structure

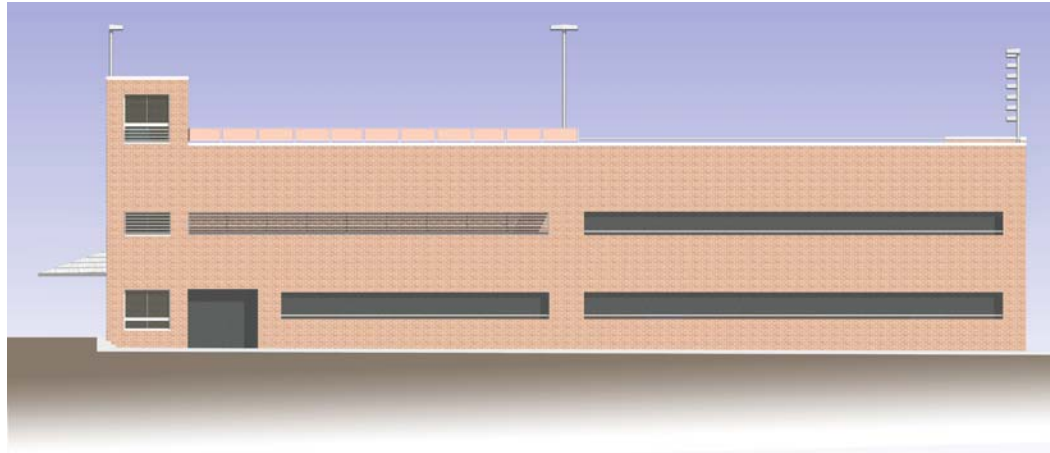


North Elevation

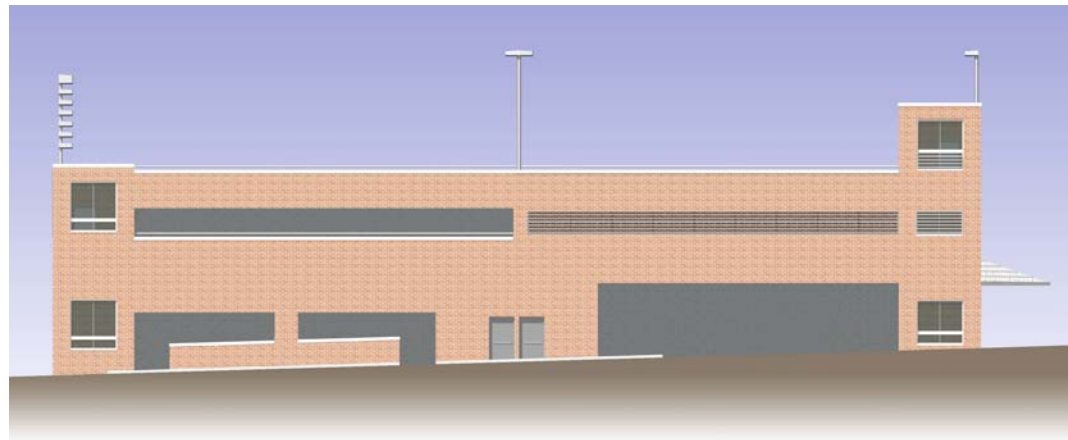


South Elevation

Parking Structure



West Elevation

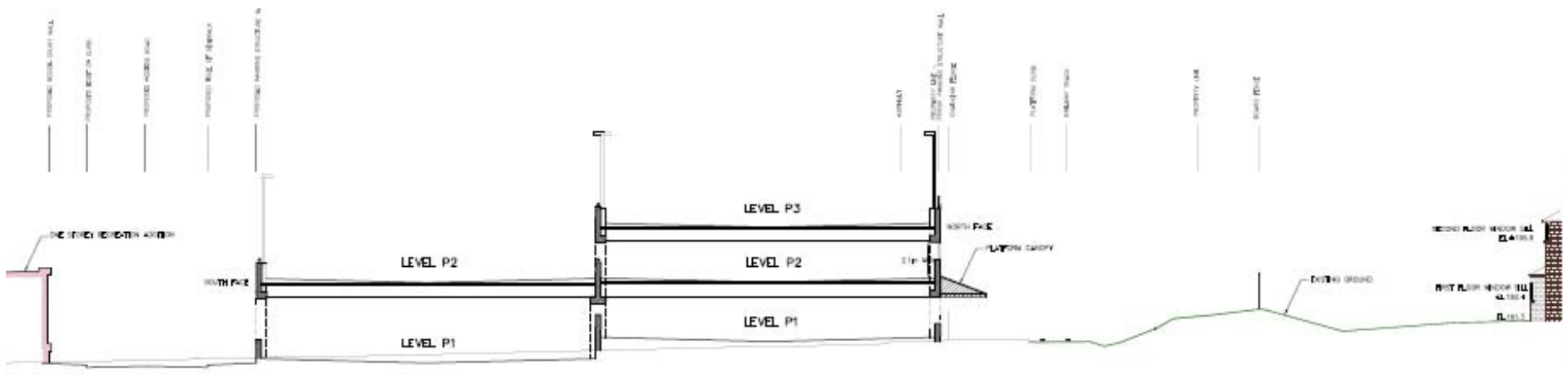


East Elevation

Parking Structure



A **tyco** International Ltd. Company



North – South Section

Parking Structure



Parking Structure

 **EarthTech**

A **tyco** International Ltd. Company



Parking Structure

 **EarthTech**

A **tyco** International Ltd. Company

GO Parking Capacity Summary

P1 Level = 101

P2 Level = 149

P3 Level = 134

Structure Total = 384

Grade Parking = 38

Total GO Parking = 422

Net Increase = $422 - 191 = 231$

Work to Date

- Preliminary Design
- Public Information Meeting

Next Steps

- GO Transit/Town of Markham – M.O.U
- Site Plan Approval Process
- Design Build Documents & Tendering

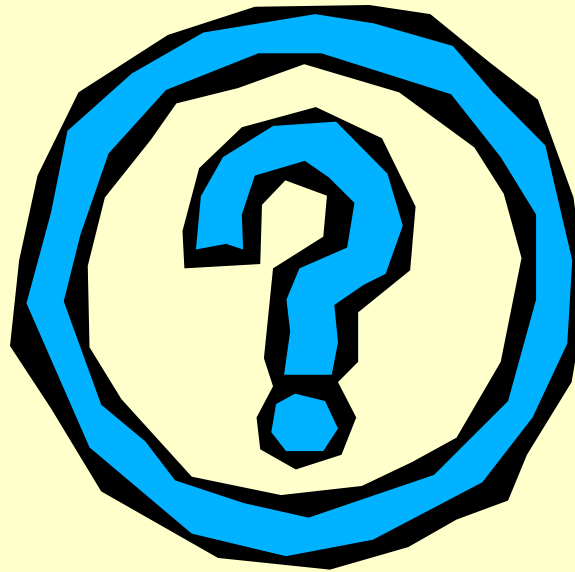
Project Schedule

(Dependant on Funding, Approvals and Completion of
Current Community Centre Expansion Project)

Construction Start – Spring 2007

Construction Complete – Winter 2007/2008

Questions



Discussion