

Development Services  
**Parks Capital Program**  
**2008**

**PROGRESS UPDATE**

General Committee:  
Building and Parks Construction  
December 8, 2008

## **Agenda:**

- 1. Current Park Development Capital Program Overview**
- 2. Park Delivery Timelines**
- 3. Annual Park Delivery Calendar**
- 4. Parks Completed in late 2007**
- 5. Parks Completed in 2008**
- 6. Parks Under Construction**
- 7. Parks Under Design**
- 8. Park Pavilions and Park Maintenance Yards**
- 9. Design And Planning Studies Underway**
- 10. E3 Process Improvements Underway**

# **2008 Parks Development Program**

## **Completed Parks**

- **100 Acres Completed Park Development**
  - **\$ 7.75M Capital – Completed Park Construction**
  - **Completed Park Facilities include approximately 10 Playgrounds, 3 Splash Pads, 9 Sports Pitches, 9 Shade Structures**
-

# **2008 Parks Development Capital Program**

## **Current Parks**

- **71 Acres Current Park Development**
  - **\$9.75M Capital – Current Park Design and Construction**
  - **Current Park Facilities include approximately 13 Playgrounds, 5 Splash Pads, 9 Sports Pitches, 14 Shade Structures**
-



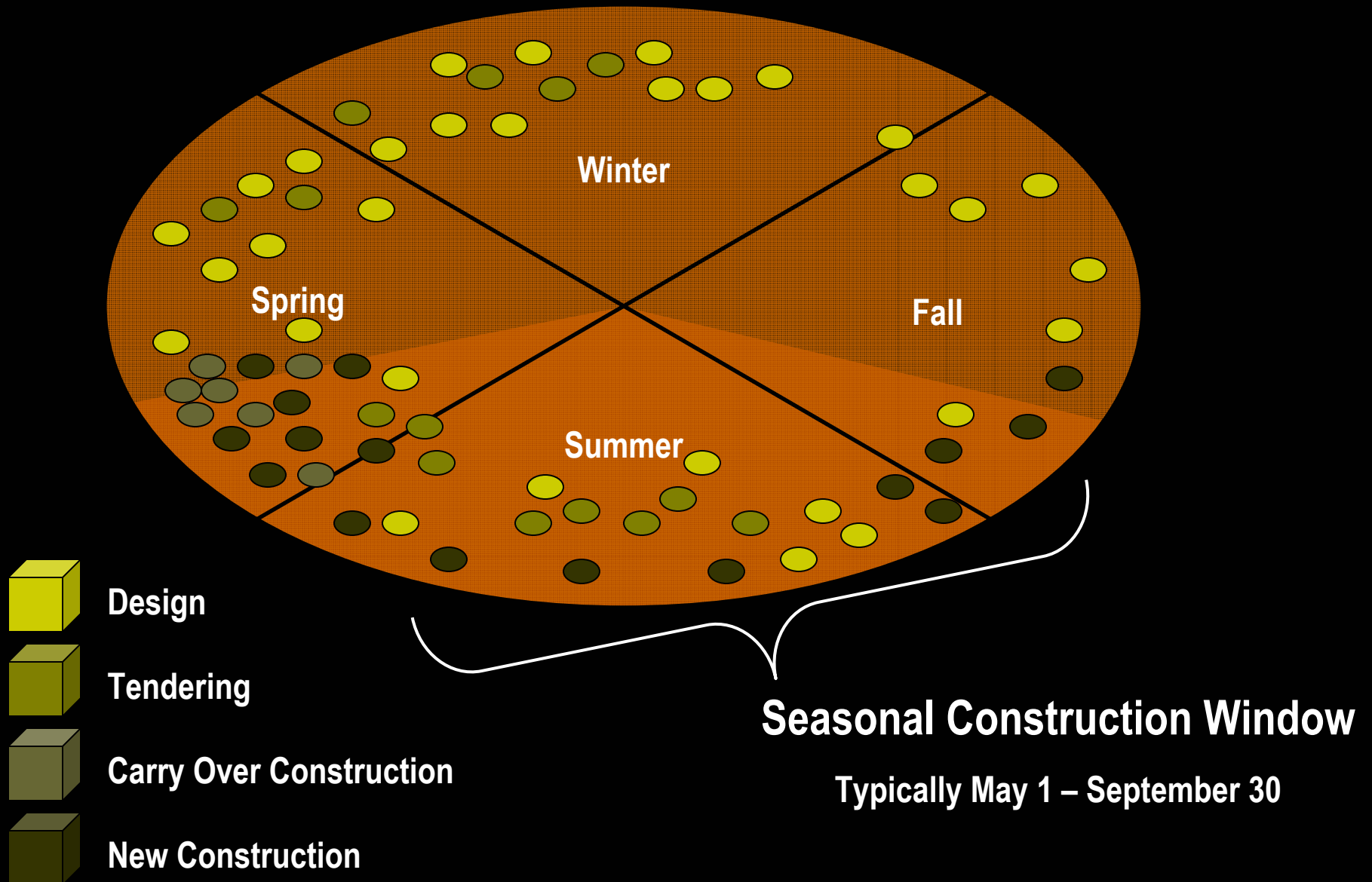
# Typical Park Delivery Timeline

- Hire Consultant
- Complete Design and Working Drawings - Includes Public Consultation
- Hire Contractor - Includes Tendering, Approval, Award
- Park Construction - Period Interrupted by Seasonal Construction Window
- Park Warranty - 2 Years



- Typical Park Delivery Timeline – 10 to 22 months PLUS Interruption of Seasonal Construction Window

# Park Delivery and the Calendar Year

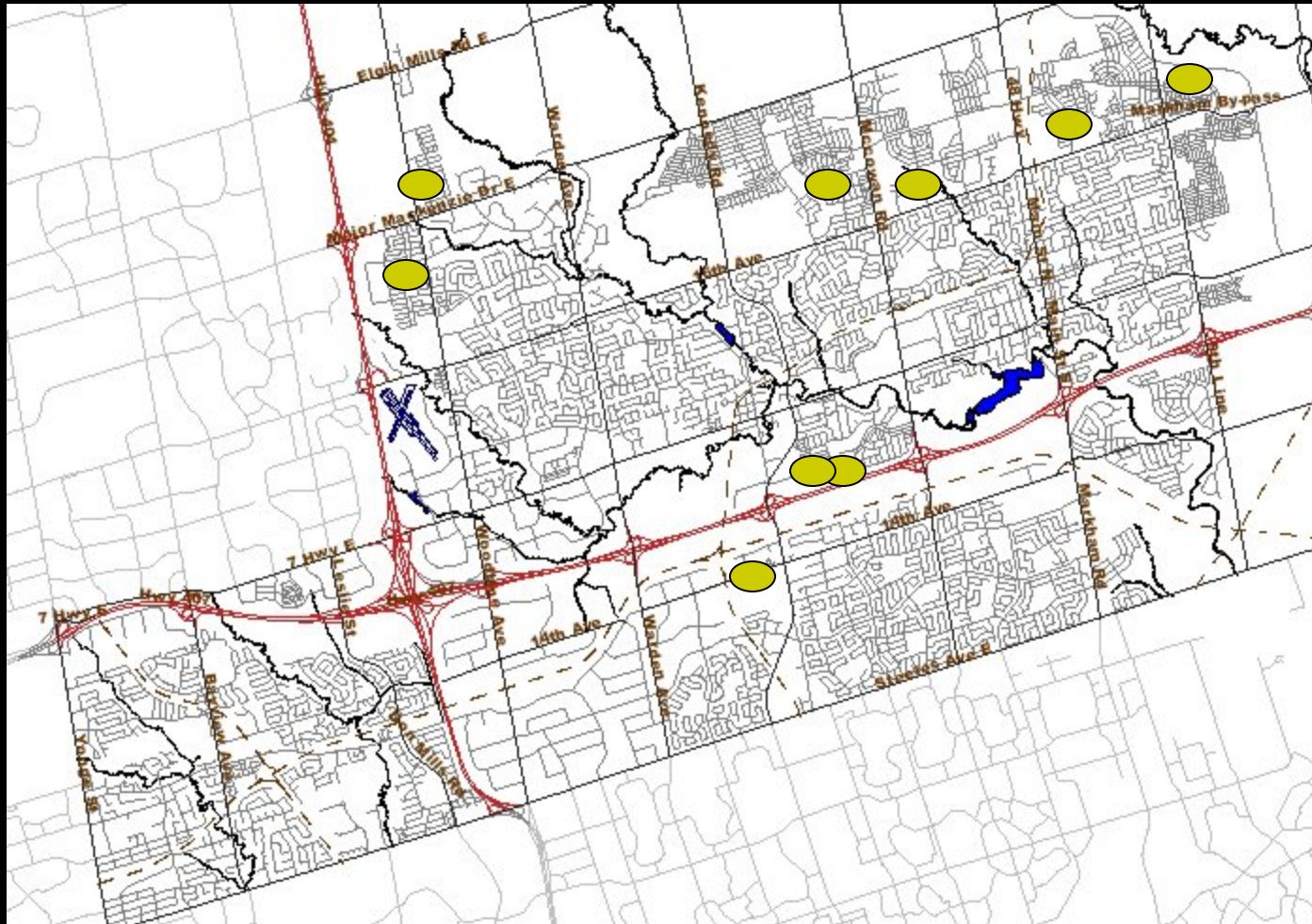


# Parks Completed in late 2007

- Milliken Mills Playground and Splash Pad Retrofit
- South Unionville Community Park
- South Unionville Greenway
- Swan Lake Waterplay and Playground
- Berczy Neighbourhood Park (Glenbrook)
- East Cathedral Neighborhood Park
- Wismer Parkette (Robinson Creek)
- Woodbine Community Park Deficiencies



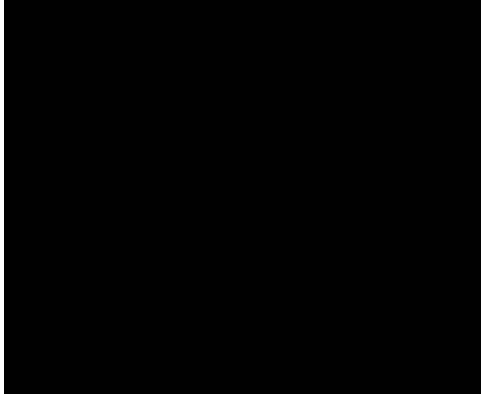
# Parks Completed in 2007





















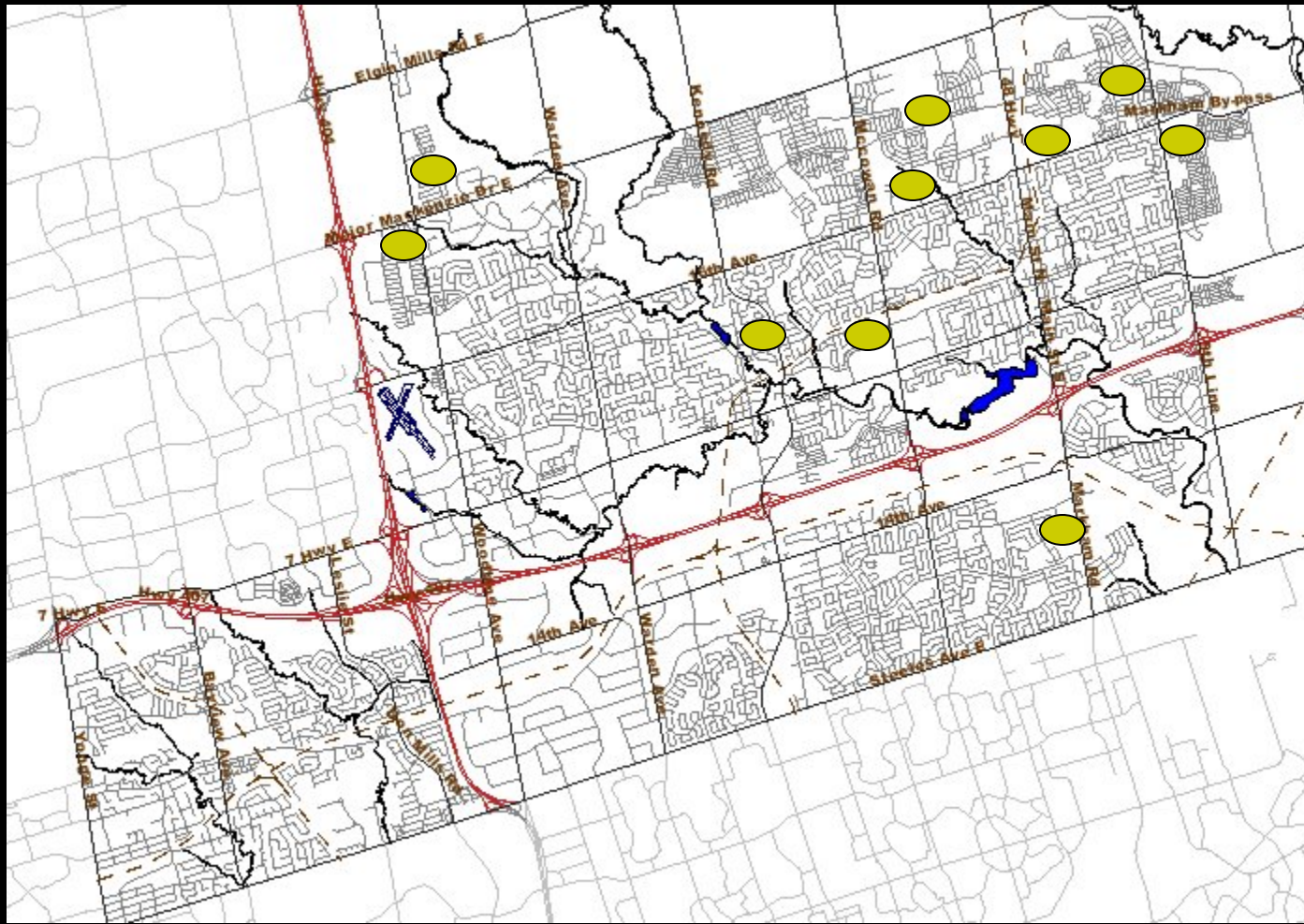


# **Parks Completed in 2008**

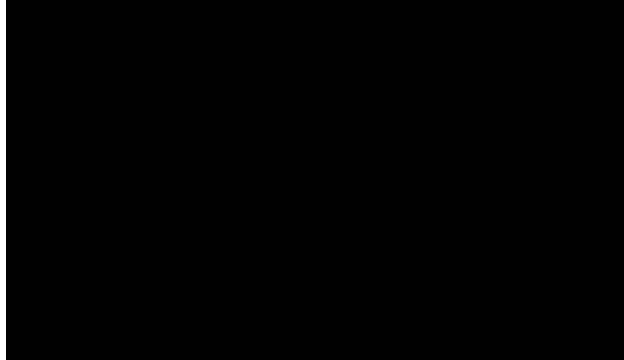
- **Wisner Community Park**
- **High Glen Neighbourhood Park**
- **Mount Joy Community Park**
- **Orchardview Neighborhood Park**
- **McKay House Garden Restoration**
- **Woodbine North Playground Retrofit**
- **White's Hill Playground Retrofit**
- **Skatepark Sign and Facility Retrofit**



# Parks Completed in 2008













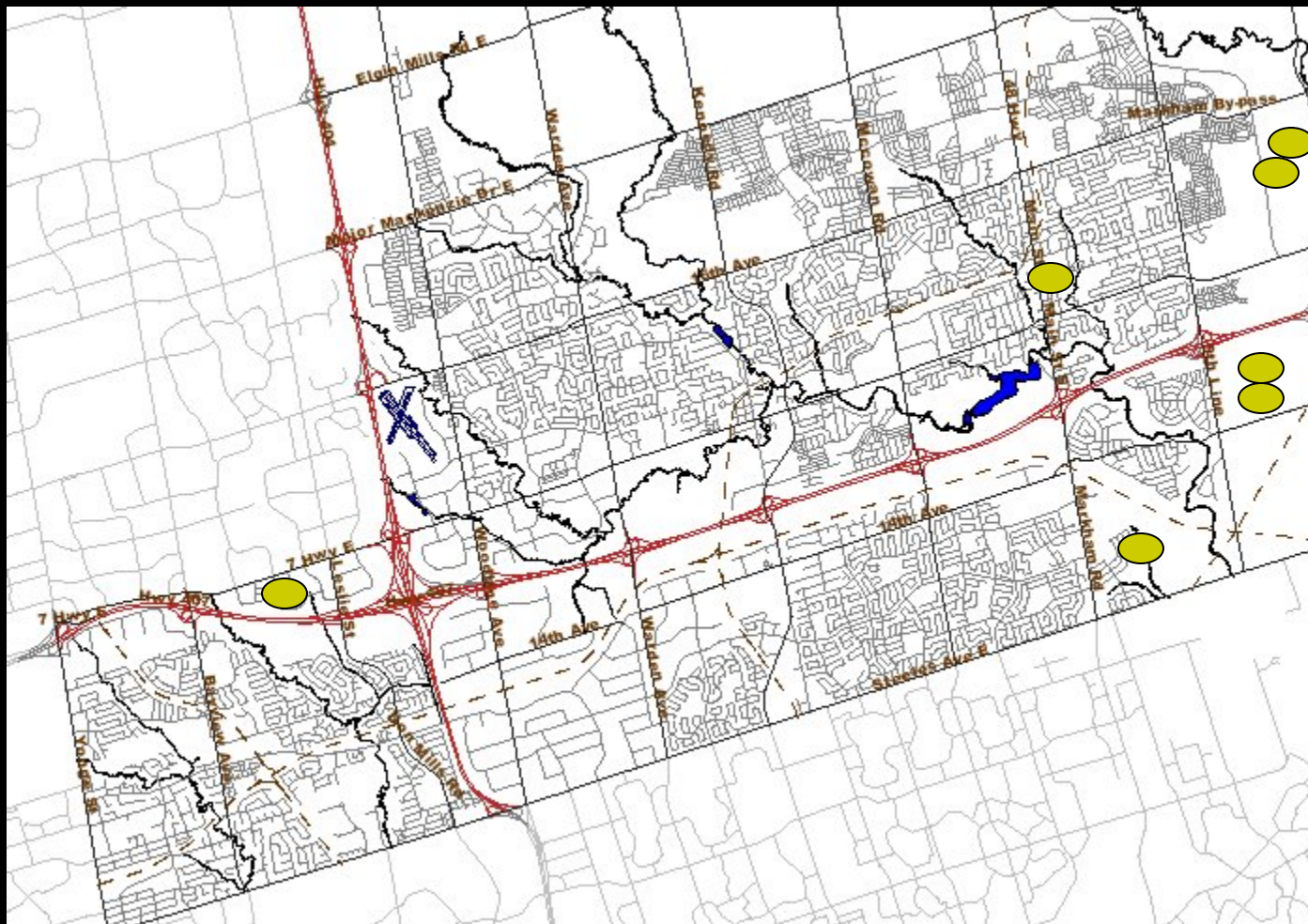


# **Parks Completed in 2008 cont'd**

- **Times Neighbourhood Park**
- **Cornell Rouge Woodlot Park (DU)**
- **Cornell Rouge Parkette (Albert Lewis) (DU)**
- **Joseph Street Gazebo Reconstruction**
- **Box Grove Parkette (Rizal) (DU)**
- **Box Grove Parkette (Collingham Place) DU)**
- **Villages of Fairtree Community Park (cricket pitch)**
- **Trees for Tomorrow – First Phase**

# Parks Completed in 2008

## cont'd



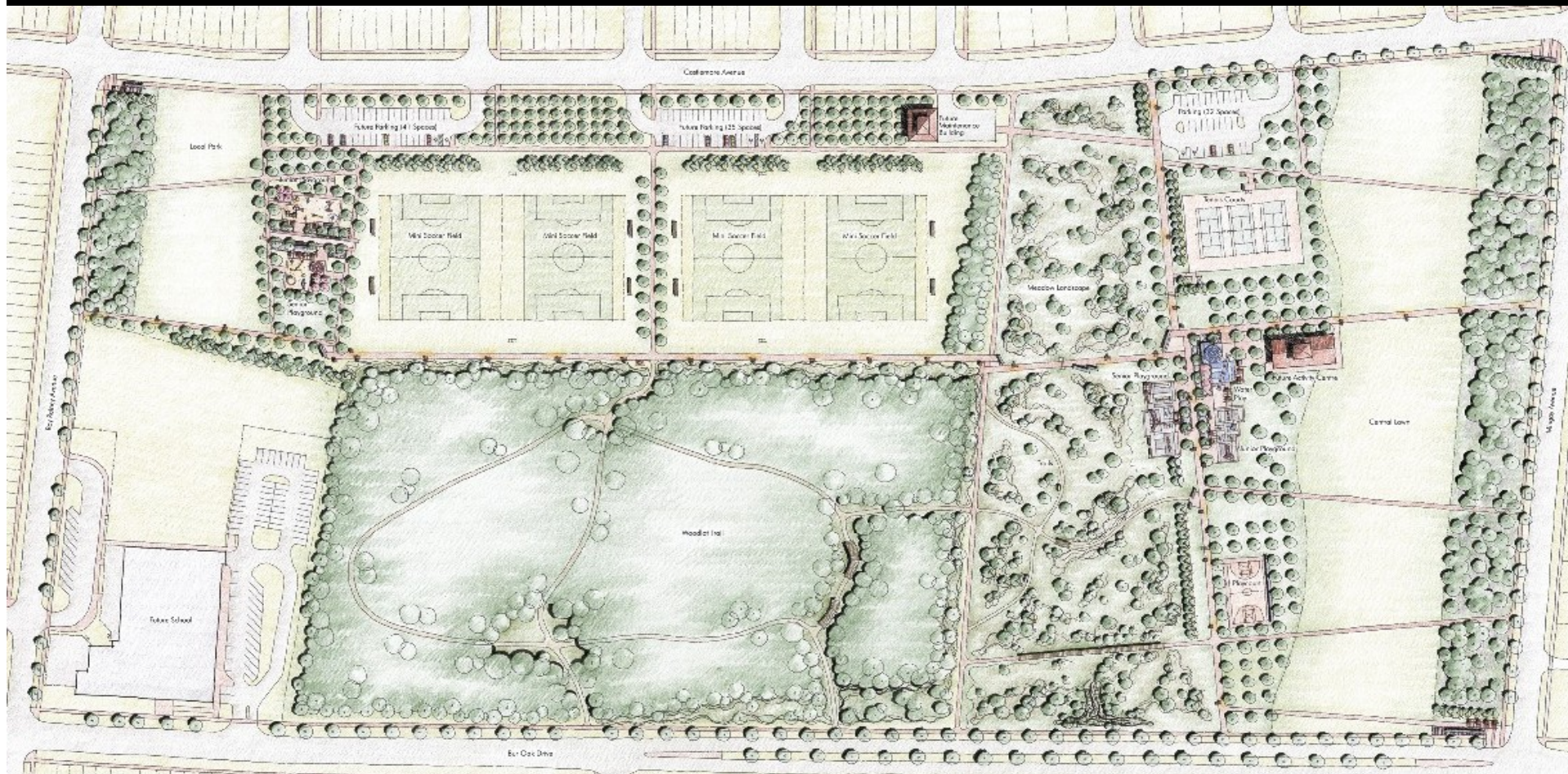








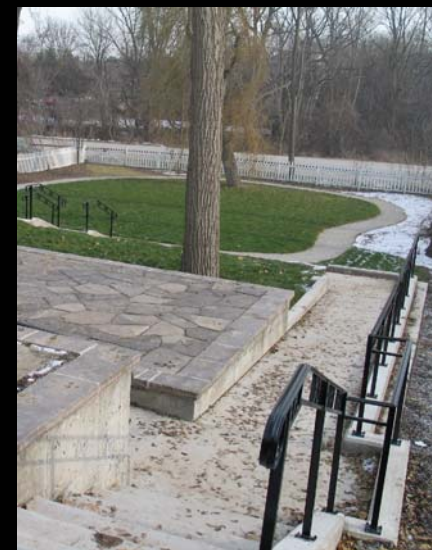
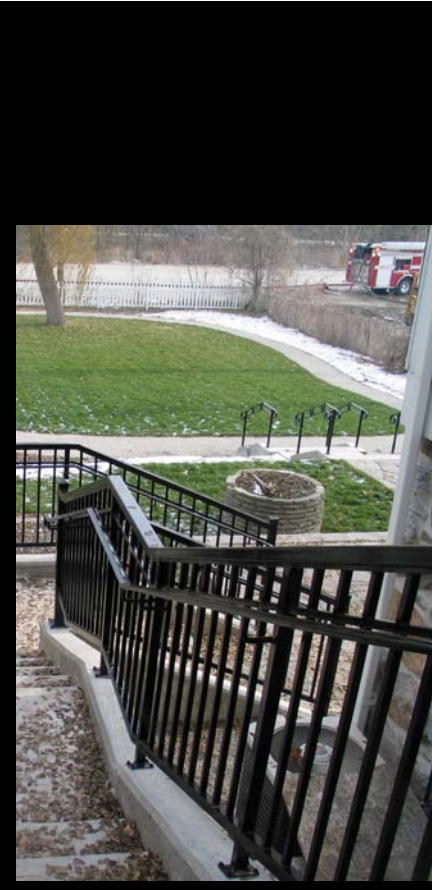
























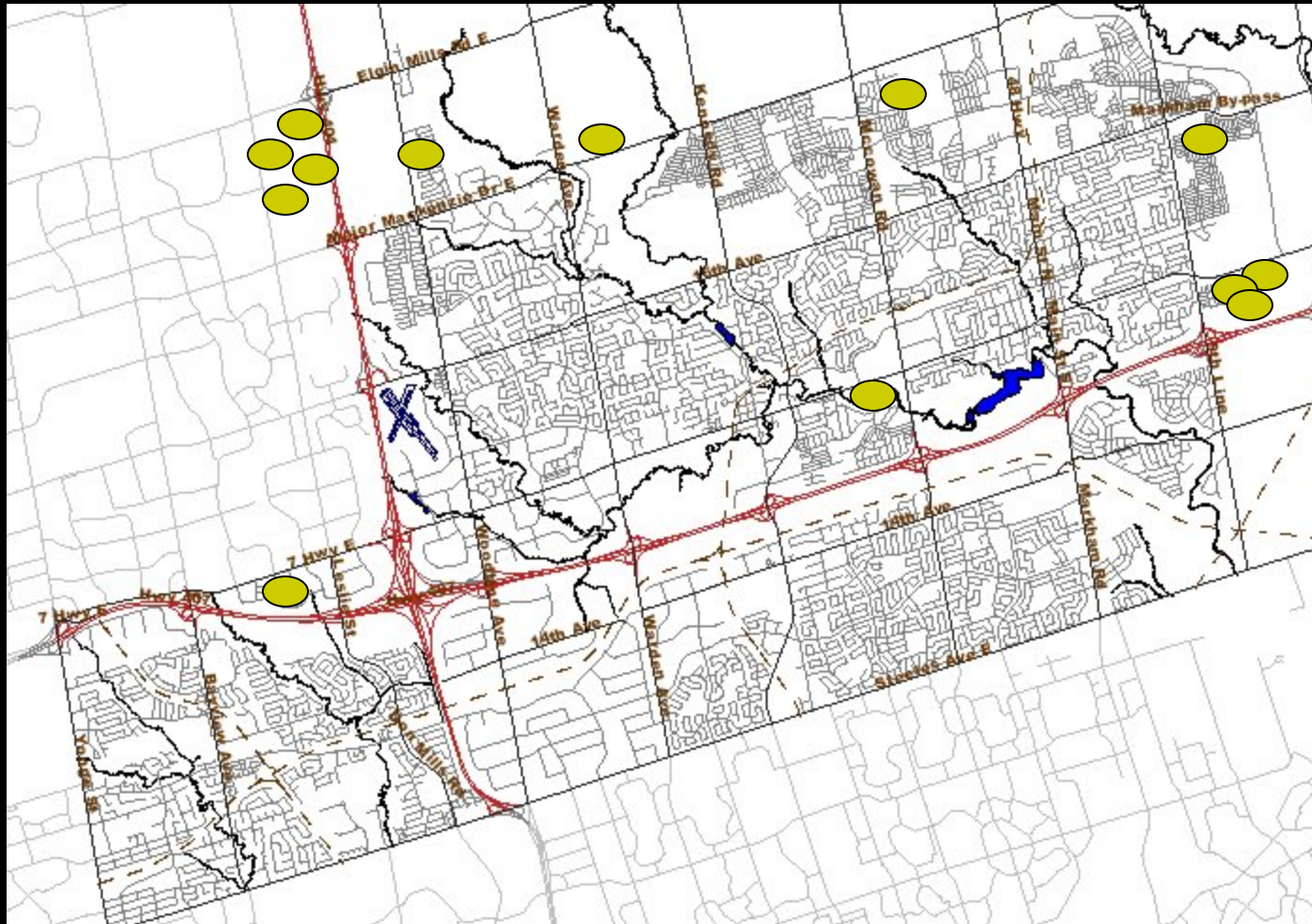


# **Parks Under Construction**

## **2008 - 2009**

- **Grand Cornell Community Park (DU)**
- **Grand Cornell Parkettes (DU)**
- **Cathedral Town – Park Square (DU)**
- **Cathedral Town – Crescent Park (DU)**
- **Cathedral Town – Arboretum (DU)**
- **Cathedral Town – Panorama Park (DU)**
- **East Cathedral Community Park**
- **Wismer Neighborhood Park (Stalmaster)**
- **Pathway from Hwy 7 to Annina Court**
- **Mattamy Country Glen Parkette (DU)**
- **Pebble Path - Times Neighbourhood Park**
- **Angus Glen Soccer Field**

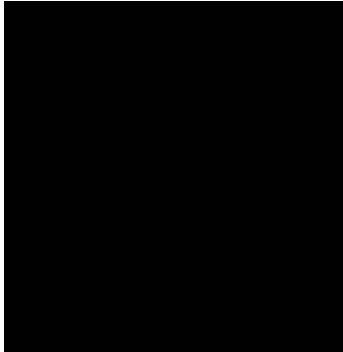
# Parks Under Construction











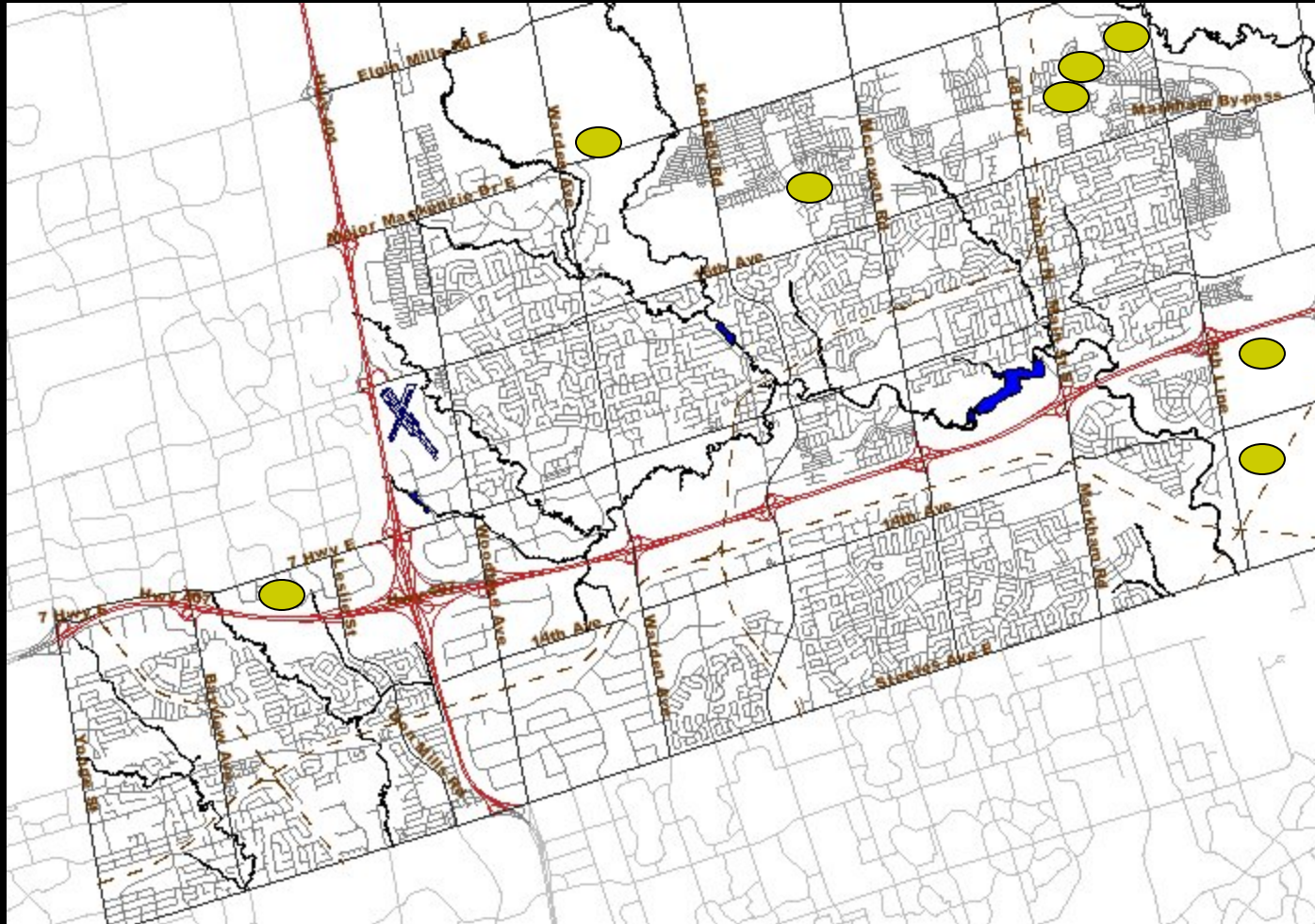
# Parks Under Design

- Box Grove Woodlot Park
- Greensborough Neighborhood Park (Stalmaster)
- Greensborough Woodlot Link Parkettes
- Amos Court Park - Greensborough
- Leitchcroft Community Park
- Angus Glen Community Park (Final Phase) (RFP closed)
- Box Grove Neighbourhood Park South (RFQ out)
- Berczy Community Park South (Final Phase) (RFQ out)

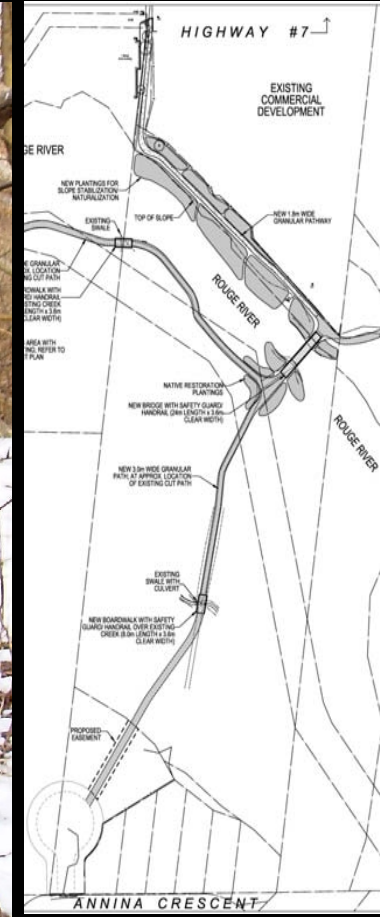


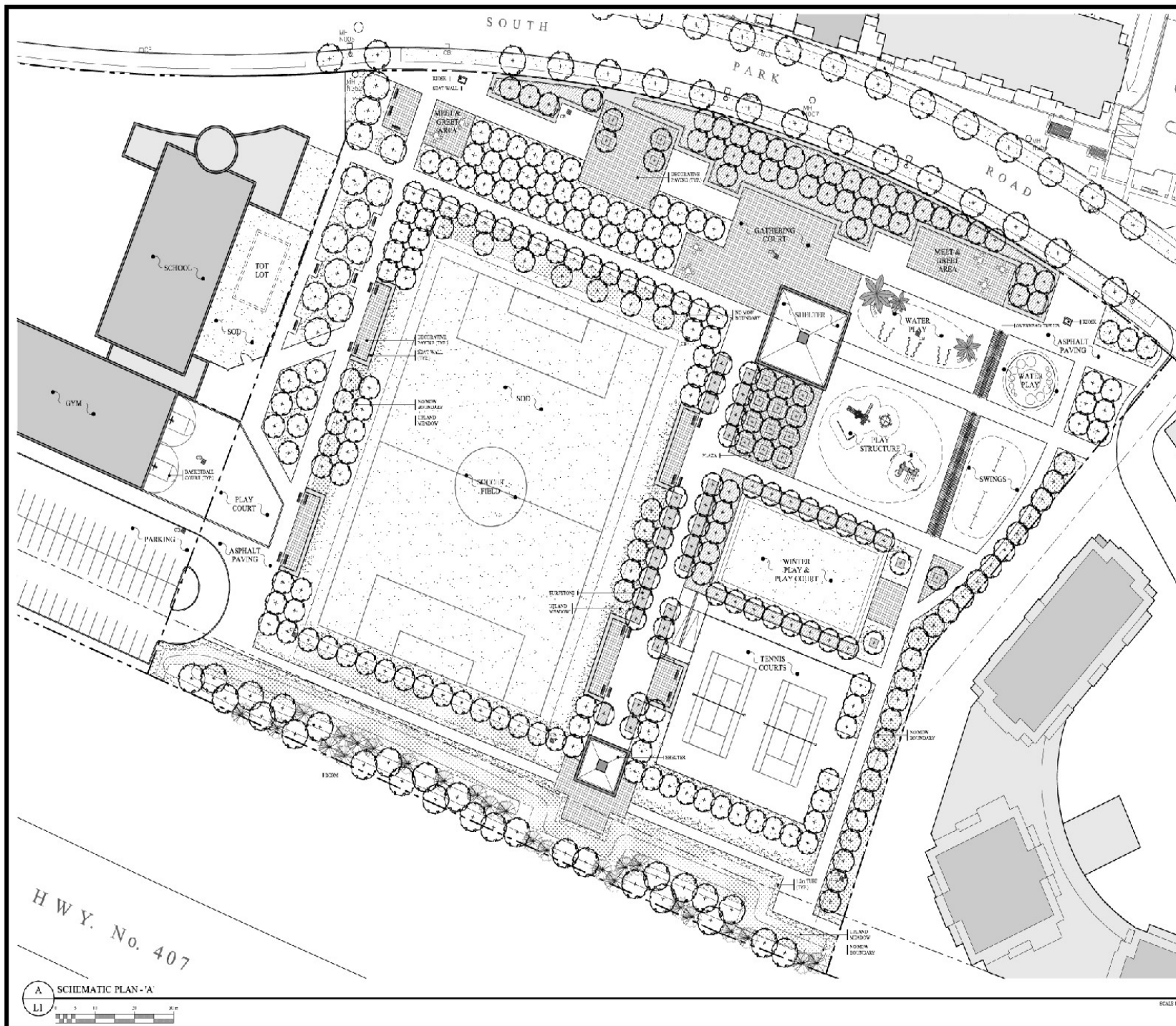


# Parks Under Design





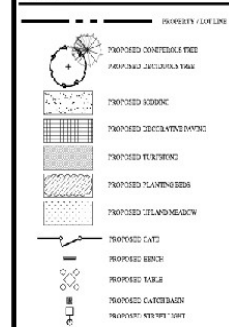




## KEY PLAN



### LEGEND



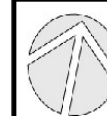
ID:	Description	Unit
<b>Revisions:</b>		



**Kenneth J. Hoyle**  
URBAN DESIGN, SITE PLANNING  
& LANDSCAPE ARCHITECTURE

Kenneth J. Hoyle, CALA, FCSI, A, CAPSIC  
33 Galleries Street, Cambridge, MA, N 1R 1R2  
Tel: 617/434-0226 Fax: 617/434-0245  
E-mail: ken@hoyle.ca  
www.hoyle.ca

ECONOMY • ENVIRONMENT • COMMUNITY



Client: TOWN OF MARKHAM

Project Title:  
LEITCHCROFT COMMUNITY PARK

Sheet Title:  
SCHEMATIC PLAN - 'A'

**Browsing Status:**  
FOR DISCUSSION

Scale: 1:400	Project Number: KJH 08-06
Designed By: A.L.	Drawing Number:  <b>L1</b> of
Drawn By: J.T.	
Checked By: K.I.L.	

Project Number: 16-111-001-006

KJH 08-06
Drawing Number:

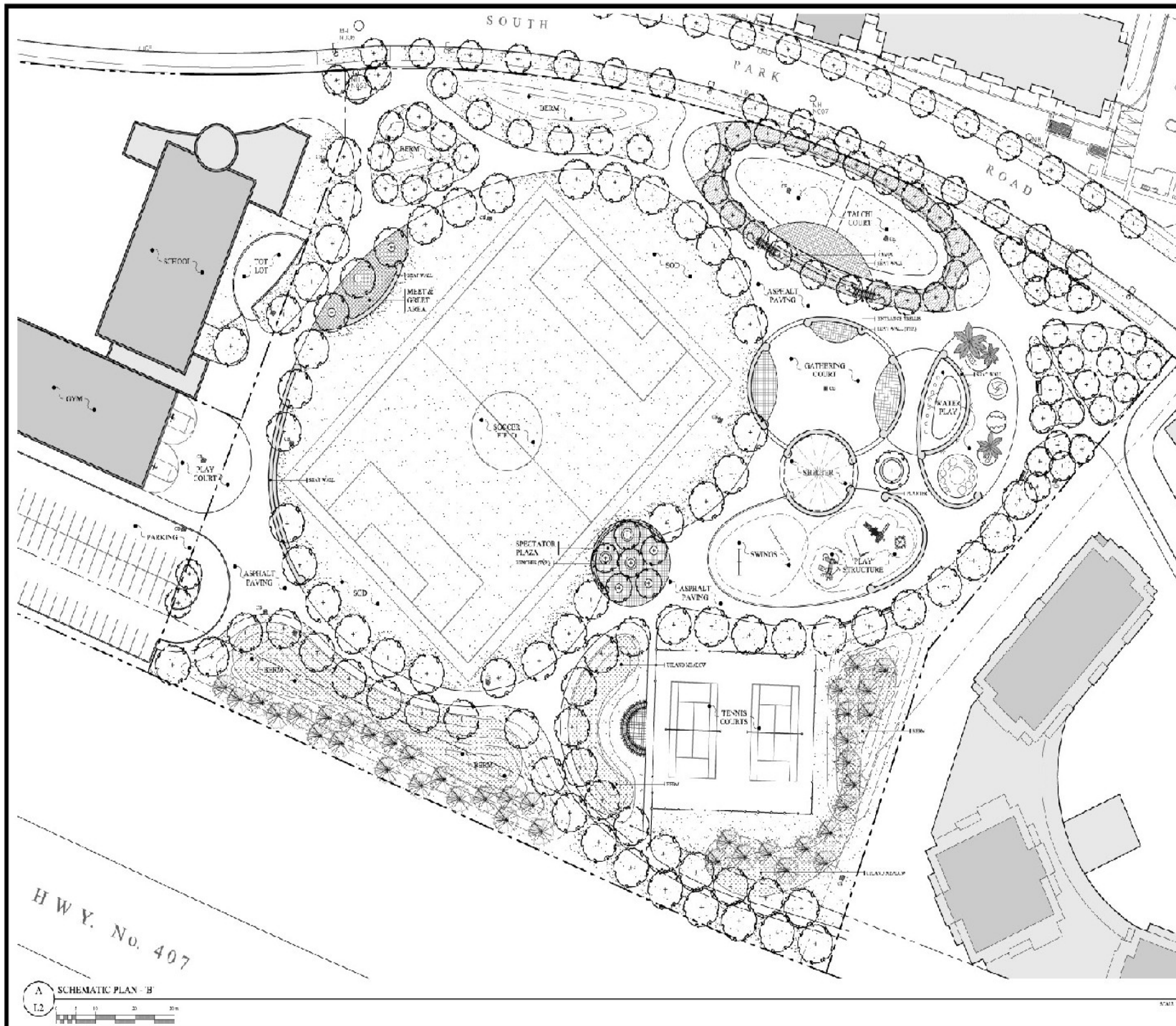
11

11 of

--	--

**L1 of 2**

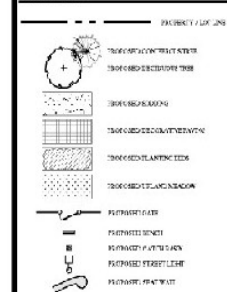




# KEY PLAN

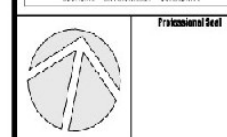


## LEGEND



NO.	DESCRIPTION	DATE
001	00100101	00100101

**Kenneth J. Hoyle**  
 URBAN DESIGN, SITE PLANNING  
 & LANDSCAPE ARCHITECTURE  
 KENNETH J. HOYLE URBAN DESIGN, SITE PLANNING  
 & LANDSCAPE ARCHITECTURE  
 14 CANTON STREET, CAMBRIDGE, ON N1R 1A2  
 TEL: (508) 452-1234 FAX: (508) 452-1235  
 E-MAIL: kjoyle@kjhoye.com  
 WWW: KJOYLE.COM



Client:  
 TOWN OF MARKHAM

Project Title:  
 LEITCHCROFT COMMUNITY PARK

Drawing Title:  
 SCHEMATIC PLAN - B

Drawing Scale:  
 FOR DISCUSSION

Scale:  
 1:400

Project Number:  
 KJH 08.06

Designed By:  
 K.H.

Drawn By:  
 J.T.

Checked By:  
 K.H.

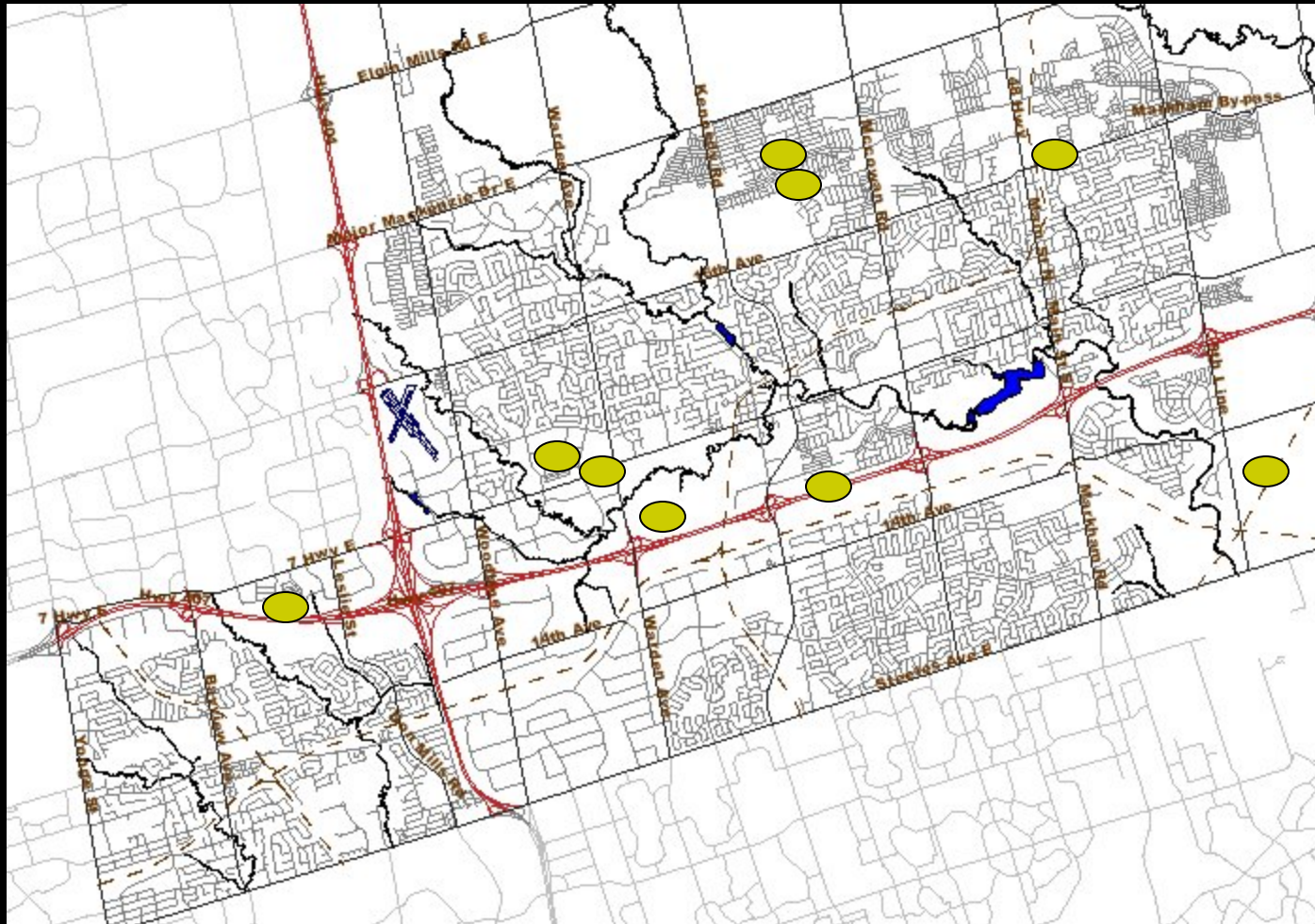
**12 of 2**

# Parks Under Design

- Pebble Path - Times Neighbourhood Park
- Caboto Trail Parkette – South Unionville
- Berczy Park Tennis Courts and Waterplay
- Berczy Park Ball Field Lighting
- Civic Centre Interlocking Paving Replacement
- Circa Dorsey Park (DU)
- Markham Civic Mall (Phase 1) with VIVA Rapidway
- Villages of Fairtree Neighbourhood Parks (LA to be hired)
- Mount Joy Pedestrian Bridge (LA to be hired)

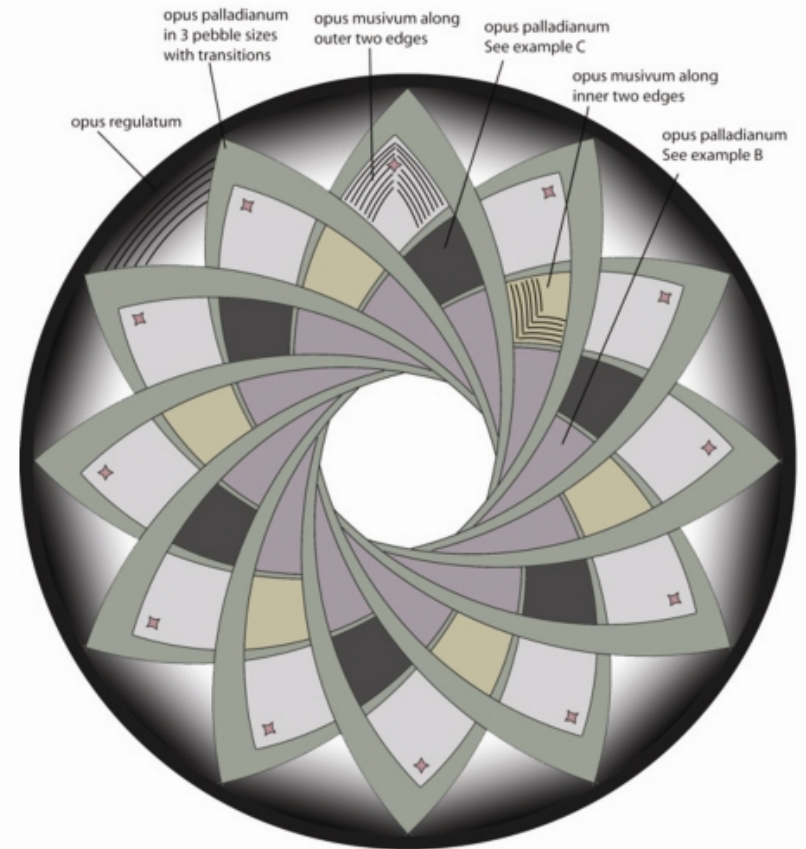


# Parks Under Design





## Design







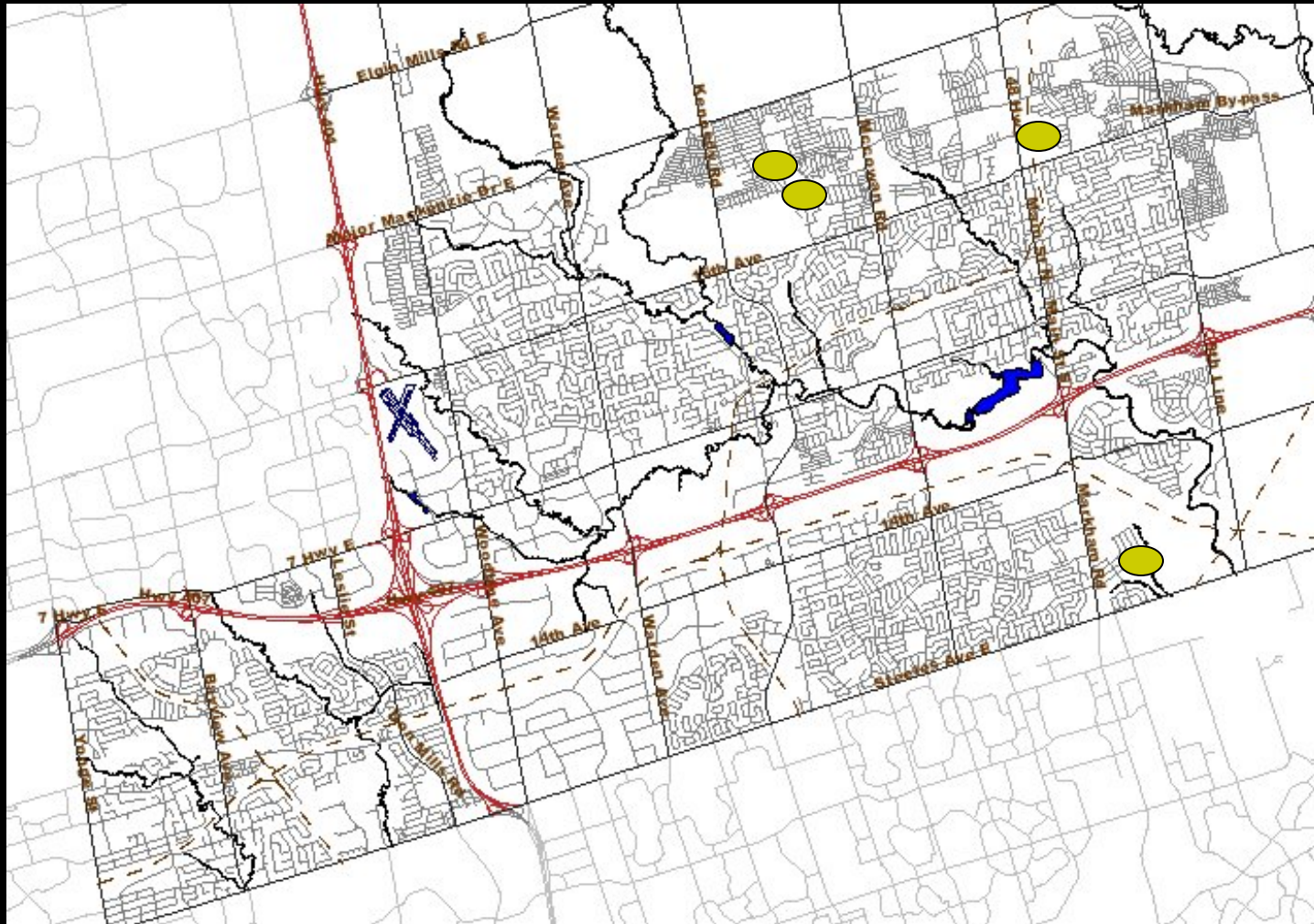
# **Park Pavilions and Park Maintenance Yards**

- **Berczy Community Park Pavilion and Washrooms**
- **Berczy Park Maintenance Yard and Washrooms**
- **Mount Joy Park Maintenance Yard and Washrooms**
- **Villages of Fairtree Community Park Washroom**

**These projects are on-hold pending a report from staff on the operational and cost implications of these facilities to the Town**



# Park Pavilions and Park Maintenance Yards



# Design and Planning Studies Underway

- **Markham Museum Master Plan**
- **Municipal Public Art Plan**
- **Markham Centre Civic Mall Vision**
- **Markham Centre Park Development Agreement**
- **Park Development Component of DC Soft Charges Update**
- **Park Standards and Policies for Intensification**





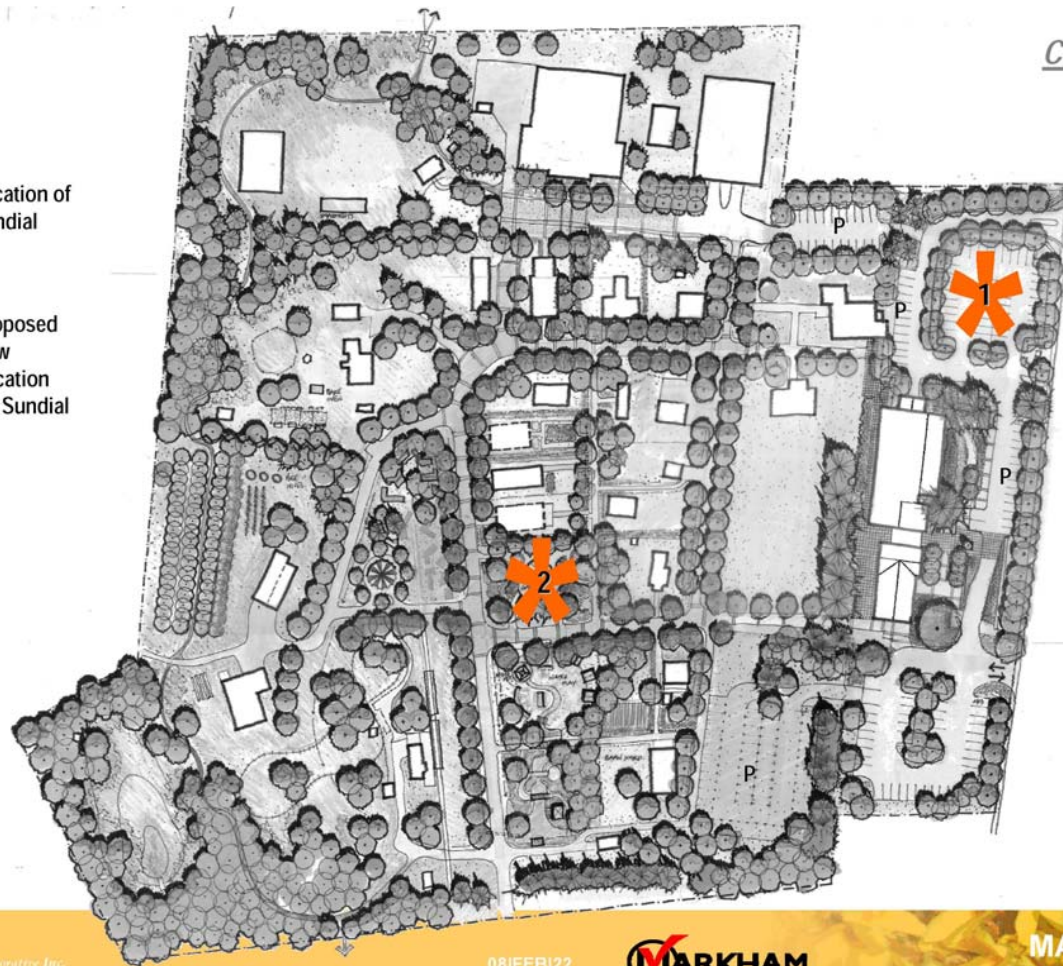
# Conceptual Master Plan

DRAFT

07|NOVEMBER|07

1 Location of Sundial

2 Proposed New Location for Sundial



## LEGEND

-  Proposed Street Tree
-  Proposed Deciduous Tree
-  Proposed Flowering Tree
-  Proposed Coniferous Tree
-  Proposed Garden Area
-  Proposed Hedge
-  Proposed Parking

Scale 1:1250



08|FEB|22



**MARKHAM MUSEUM**  
LANDSCAPE MASTERPLAN



# **E3 Process Improvements Underway**

- **Mapping of Existing Park Development Processes**
- **Park Standards Manual and Best Practices**
- **New Developer Up-fronting Agreement Conditions**
- **RFQ / RFP Standards for Consultant Hiring**
- **Customer Satisfaction Survey**
- **On-going Coordination Meetings with Operations Staff**







**Thank You!**