

EAST MARKHAM COMMUNITY CENTRE + LIBRARY

COUNCIL MEETING 06 22 2009



SHORE TILBE IRWIN & PARTNERS

Value Engineering List

1. Deletion of Swim Officials Room - 400 sf
2. Area reduction throughout building - 950 sf
3. Simplification of and adjustments to Parking Garage cladding system
4. Revisions to Library structure at 2nd floor and roof - from concrete to steel/concrete hybrid
5. Modifications to exterior canopies
6. Modifications to Lobby skylight and supporting structure
7. Revisions to skylights at gym and pool
8. Revision to ceiling finish at 2nd floor Fitness/Aerobics area - ceiling tile in lieu of wood slats
9. Revision to balustrade at Track - steel pickets in lieu of glass

Total \$1.96M



Additional Building Features included within Budget

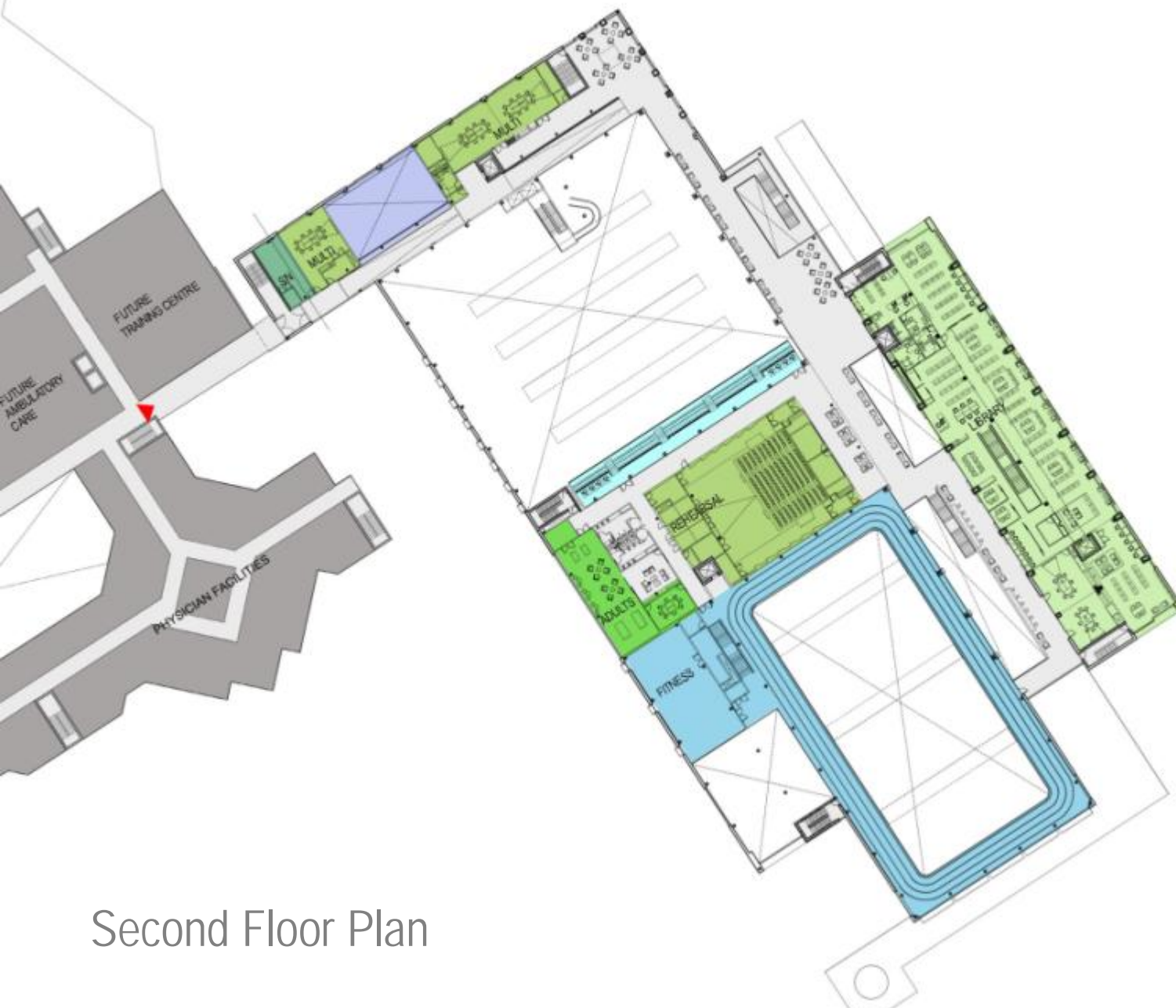
1. Additional crush space at Rehearsal Hall
2. Expanded Rehearsal Hall
3. Additional Multi-Use Rooms
4. Additional Elevator at North Wing
5. New Ground and Second floor 'Wellness' Lounges





Ground Floor Plan

- Aquatics
- Gymnasium
- Fitness
- Library
- Multi-use/Rehearsal
- Older adults
- Youth
- Children's playground
- Administration
- Common areas/Service
- Special needs
- Café



Second Floor Plan



Parking Garage- aerial view from southeast



Parking Structure- view from south drop off court



Common Space Skylight- current design



Common Space Skylight – proposed design



MDE Plant- aerial view from southwest



MDE Plant- northwest corner



MDE Plant- view from south



MDE Plant- view from northwest