

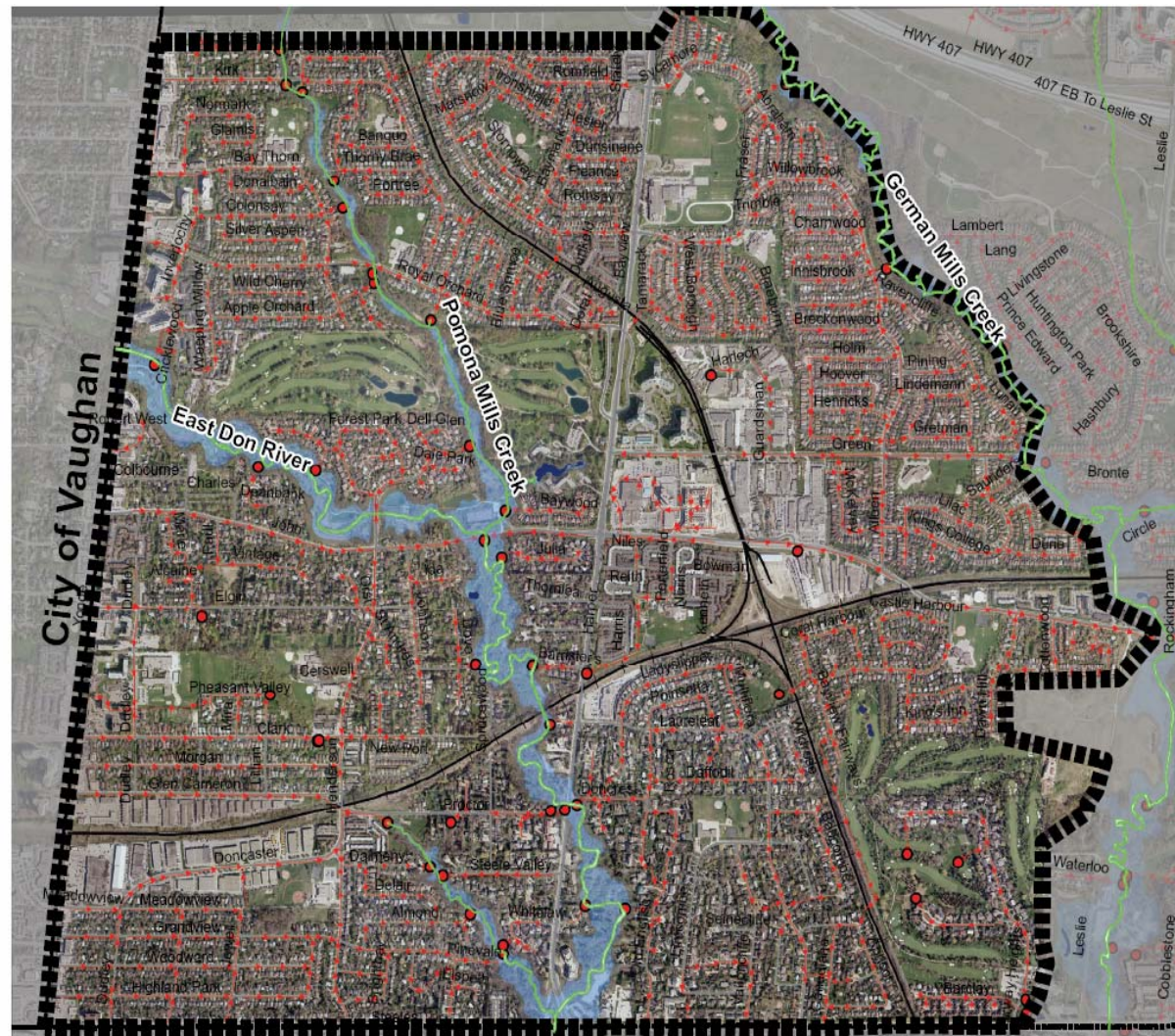
Attachment A - Study Area

**Approximate Study Area
= 1,210 Ha**

**Approximate No.
buildings = 8495**

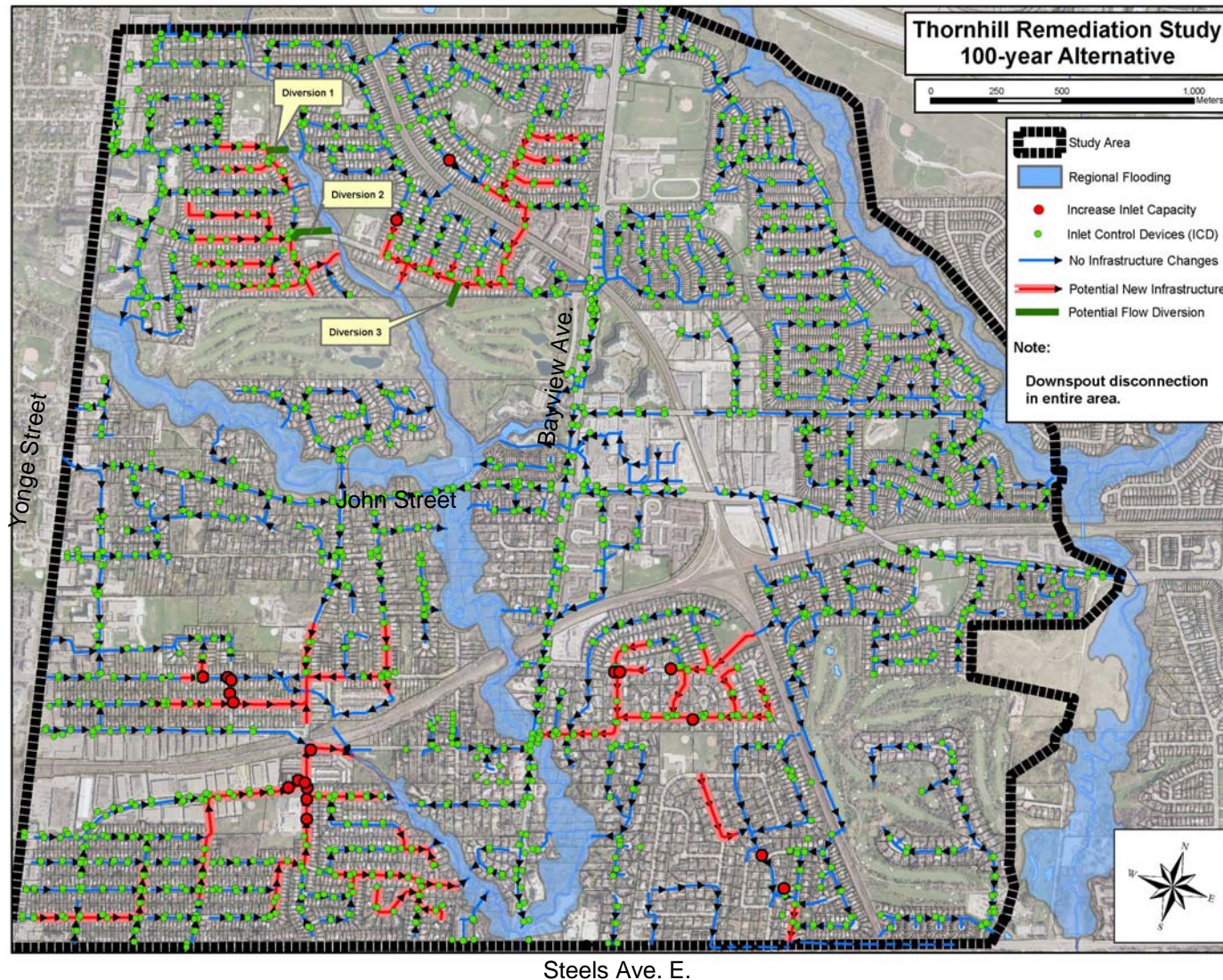
Legend

- Sewer Outfall
- Overland Flow Path
- Regional Floodline
- Sewers
- Roads
- Railway
- Study Area



City of Toronto

Attachment B - Preferred Alternative Solutions: 100 year Level of Protection



Attachment C - Preliminary Cost Estimates for 100 year Level of Protection

Solution Type	Cost (\$)
Downspout Disconnection	4,000,000
Flow Balancing – Inlet Controls	2,000,000
Flow Balancing – New Catch Basins	1,000,000
New Infrastructure	33,000,000
All Solutions	40,000,000

Note: Cost Estimates will be finalized during detail design