



---

# Facility Accessibility Retrofits

---

Presented by:

Susan Ruptash,  
Jeff Hardy, Sean Siddons



**quadrangle** ARCHITECTS LIMITED



Christie Gardens – Accessible Seniors' Housing

- Architecture/Design
- Project Management
- Accessible Facility Design



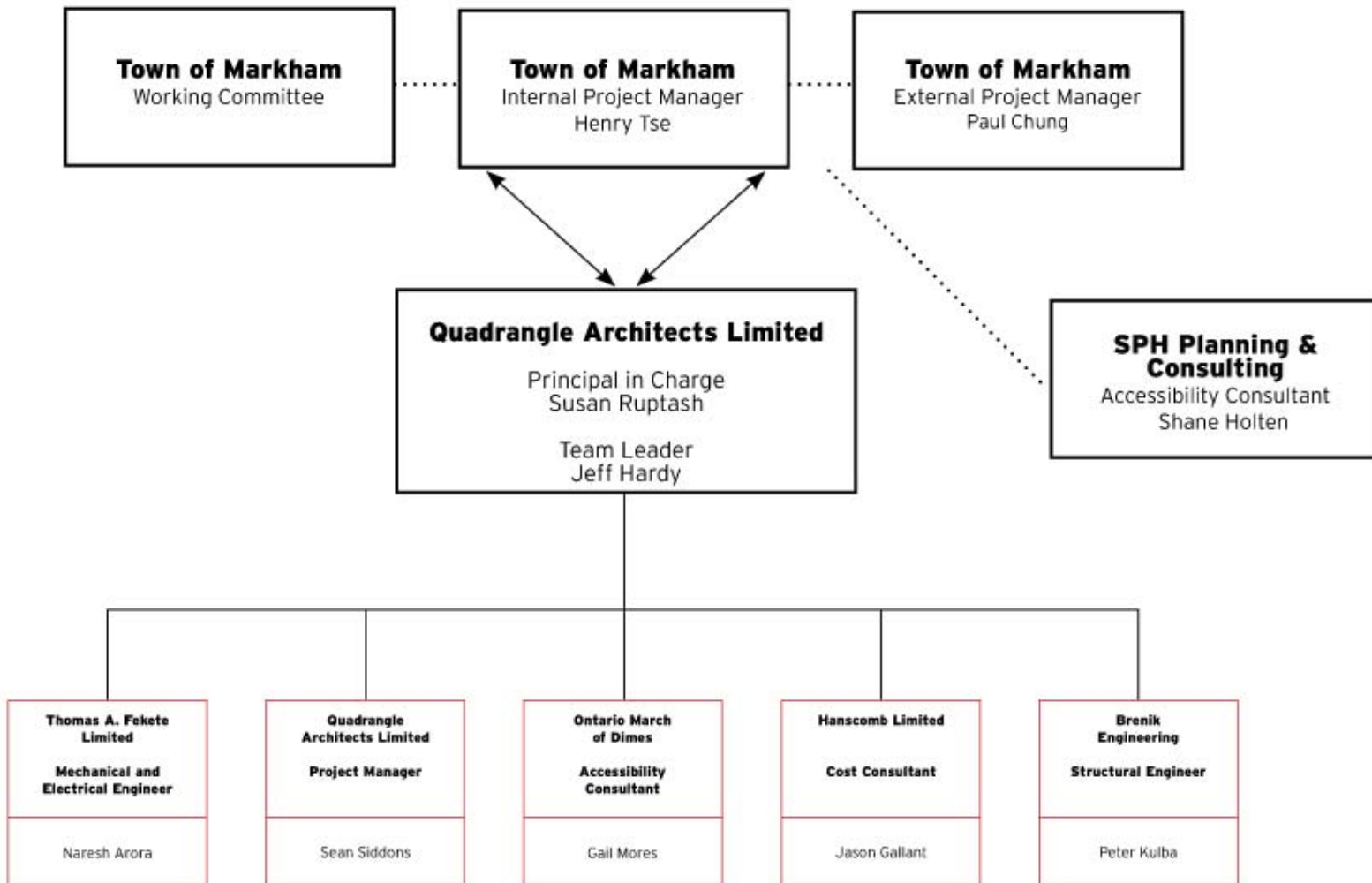
quadrangle ARCHITECTS LIMITED

- Extensive Knowledge of Accessibility Standards
- Perform Building Audits
- Experience in Retrofitting Buildings
- Part of the AODA Committee



Woodside Mews – Accessible Housing, Oakville

**Experience** - Facility Accessibility Retrofits



quadrangle ARCHITECTS LIMITED

**The Team** - Facility Accessibility  
Retrofits



- Meet with Town Working Committee every two weeks
- Warren Rupnarain, the Town's Accessibility Coordinator, attends regular meetings
- City Staff met with the Town's Advisory Committee on Accessibility to present update
- Meetings with specific facility managers



quadrangle ARCHITECTS LIMITED

**Consulting with the Town –**  
Facility Accessibility Retrofits



## RANGE OF ABILITIES and DISABILITIES



Mobility

Strength

Hearing

Vision

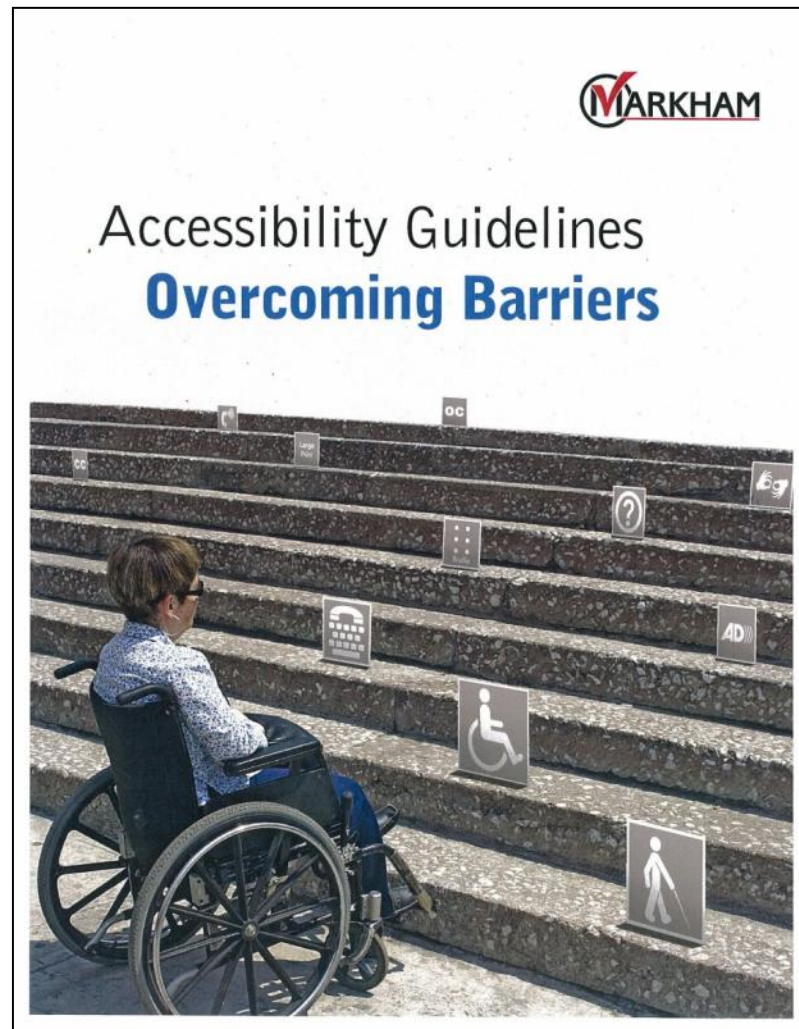
Environmental  
sensitivities

Cognitive

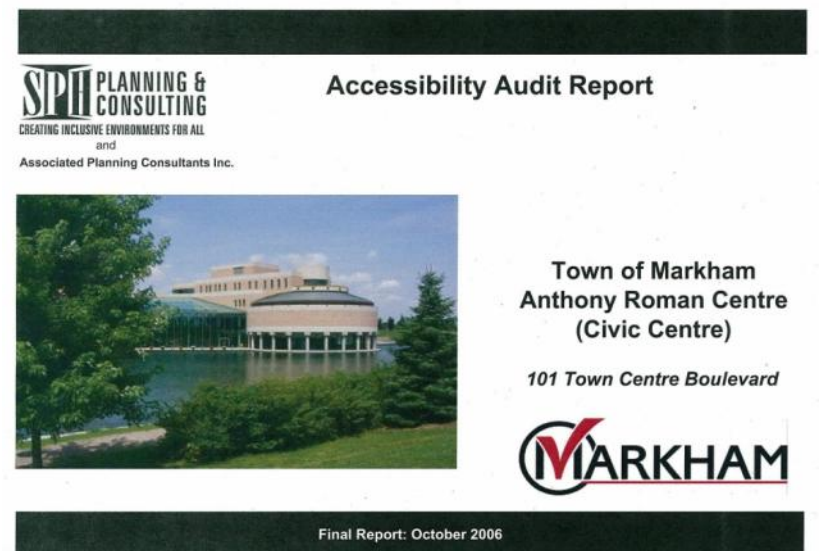


quadrangle ARCHITECTS LIMITED

**Universal Design** - Facility Accessibility Retrofits



quadrangle ARCHITECTS LIMITED



**Guiding Principles - Facility Accessibility Retrofits**





Before  
**Universal door operators**



quadrangle ARCHITECTS LIMITED



After

**Measures** - Facility Accessibility  
Retrofits



Before  
**Elevators and lifts**



**quadrangle** ARCHITECTS LIMITED



After

**Measures** - Facility Accessibility  
Retrofits





Before

## Universally accessible washrooms



quadrangle ARCHITECTS LIMITED

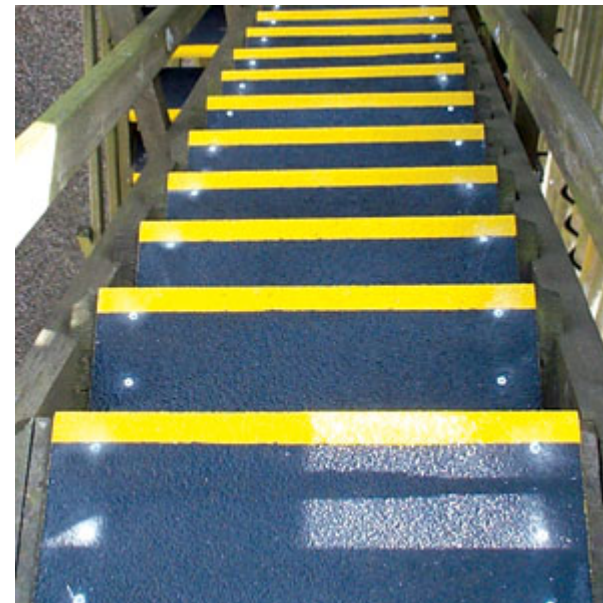
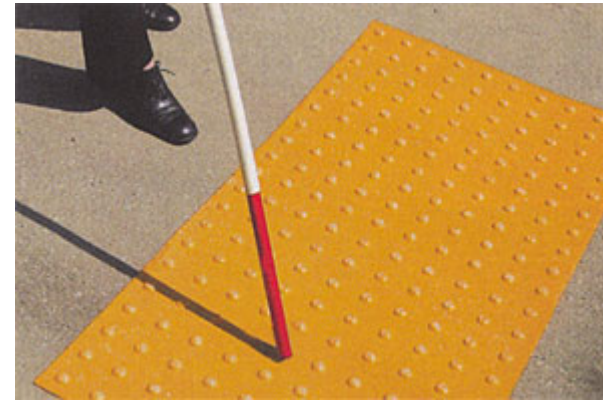


After

**Measures** - Facility Accessibility  
Retrofits



Before  
**Visual and tactile warnings**

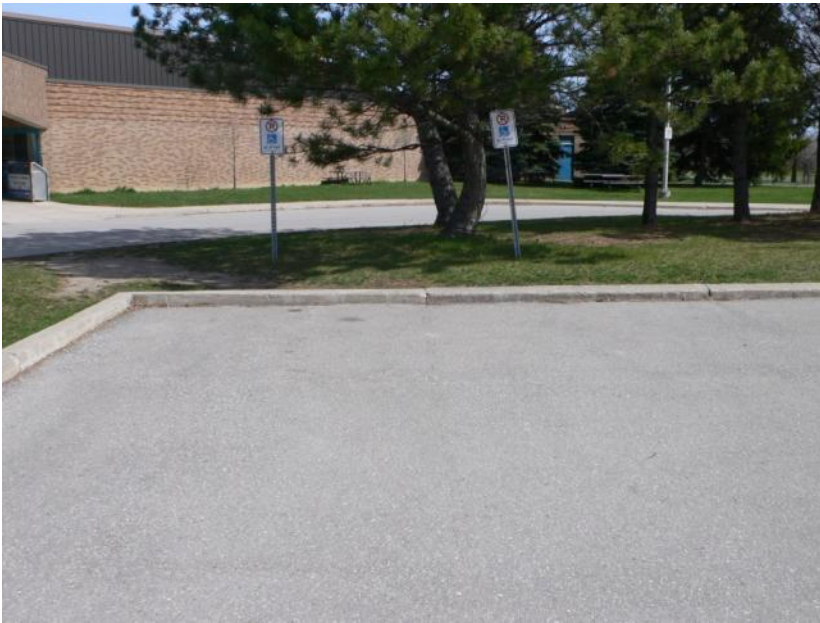


After



quadrangle ARCHITECTS LIMITED

**Measures** - Facility Accessibility  
Retrofits



Before



After

## Accessible Parking Space Improvements



quadrangle ARCHITECTS LIMITED

**Measures** - Facility Accessibility  
Retrofits



## **New Hydraulic Elevators**

- **Markham Village Community Centre**
- **Crosby Memorial Arena**

## **New Accessible Lift**

- **Mount Joy Community Centre**

## **To Be Determined (Lift or Hydraulic Elevator)**

- **Economic Development Department - Convergence Centre**



quadrangle ARCHITECTS LIMITED

**Elevators-** Facility Accessibility Retrofits



### Funding Allocation

- 
- **total project funding: \$3.2 million includes:**
- 
- **construction costs**
- 
- **professional consulting fees (architectural, engineering, project management and other consulting services)**
- 
- **construction budgeted across three phases by priority**
- 
- **will adjust scope if necessary to stay within total budget**

### Prioritization

- 
- **large facilities with long lead items – Phase One**
- 
- **large facilities with medium scope – Phase Two**

quadrangle ARCHITECTS LIMITED

**Funding & Prioritization** - Facility Accessibility  
Retrofits



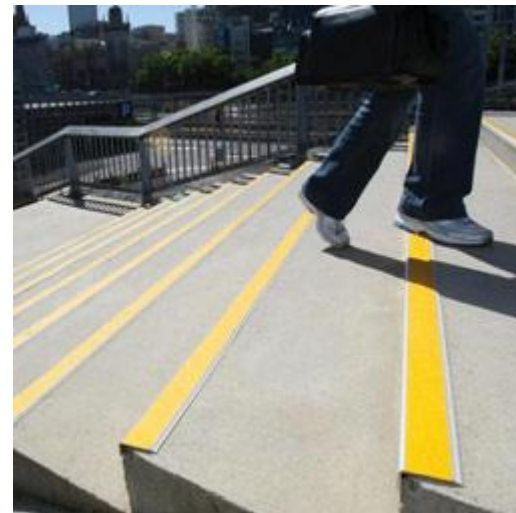


Facility Location	January	February	March	April	May	June	July	August	September	October	November	December	January 2011	February
Project Start-up														
Markham Village Community Centre		Design				Bid				Build				Buffer
Crosby Memorial Arena		Design				Bid				Build				Buffer
Mount Joy Community Centre		Design				Bid				Build				Buffer
Economic Development Department - Convergence Centre					Design	Bid				Build				Buffer
Markham Civic Centre						Design		Bid		Build				Buffer
Milliken Mills Community Centre						Design		Bid		Build				Buffer
Thornhill Community Centre & Library						Design		Bid		Build				Buffer
Markham Theatre							Design		Bid		Build			Buffer
R.J. Clatworthy Arena							Design		Bid		Build			Buffer
Armada Community Centre							Design		Bid		Build			Buffer
Unionville Library							Design		Bid		Build			Buffer



quadrangle ARCHITECTS LIMITED

**Schedule** - Facility Accessibility Retrofits



quadrangle ARCHITECTS LIMITED

**Summary** - Facility Accessibility Retrofits