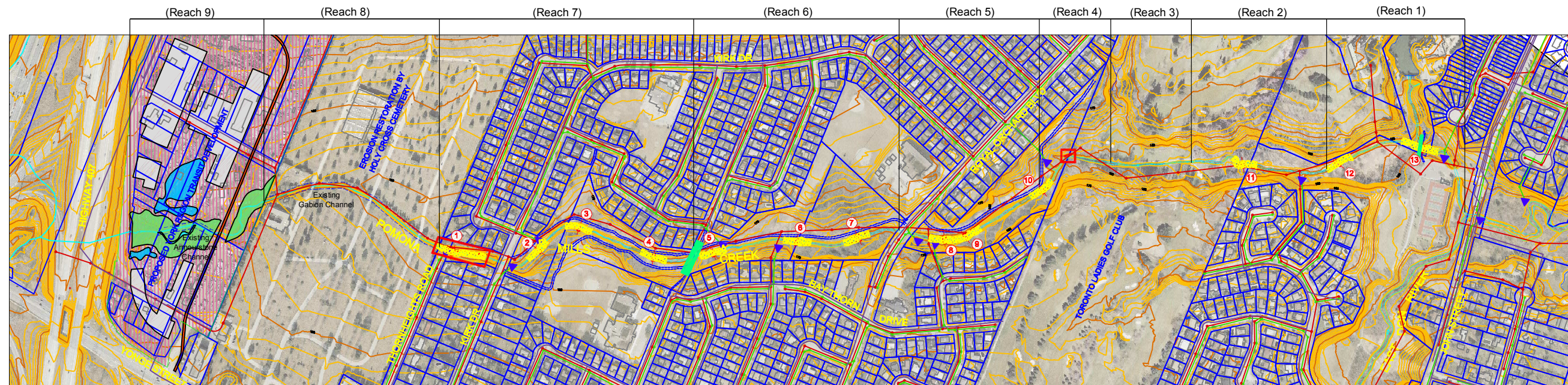


POMONA MILLS CREEK EROSION RESTORATION AND HABITAT ENHANCEMENT STUDY

Alternative 2 - Selective Works



RESTORATION AT 13 WEIR LOCATIONS

EXISTING WEIR

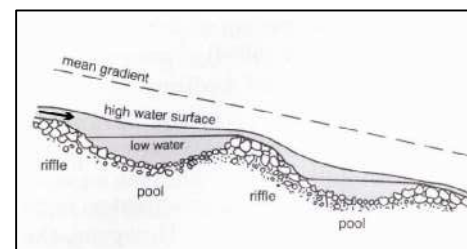
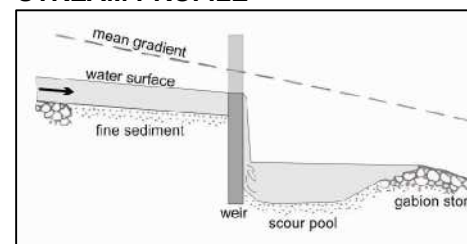


PROPOSED STEP-POOL

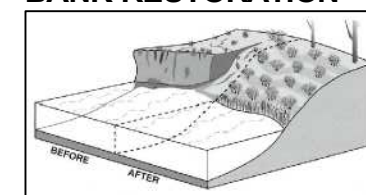


Step-pool Channel:
Channel restoration and improved fish passage locally where weirs are removed

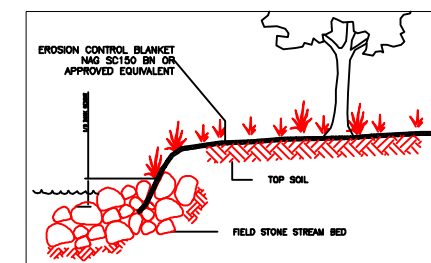
STREAM PROFILE



BANK RESTORATION

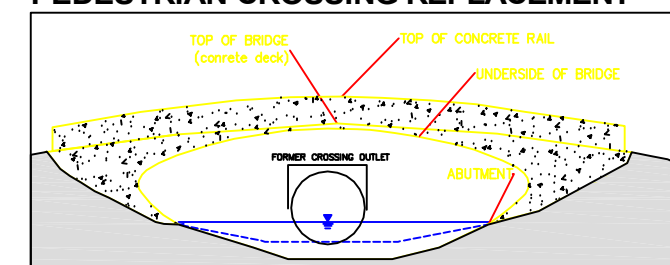


Bank Shaping: Eroding channel banks regraded and planted



Bank Protection: Eroding channel banks protected with round stone at bank toe. Upper bank stabilized using bio-engineering techniques.

PEDESTRIAN CROSSING REPLACEMENT



Crossing Span: Undersized culverts removed and pedestrian bridges constructed with adequate span across the restored channel

ALTERNATIVE 2 LEGEND

- Weir Removal and Step Pool Channel Restoration
- Crossing Replacement
- Bank Erosion Restoration

LEGEND

- Existing Watercourse
- Bank Erosion Site
- Weirs
- Stream Outfalls
- Storm Sewer Network and Manholes
- Sanitary Sewer Network and Manholes
- Recreational Pathway

Scale: 1:3000



Contour Interval = 1m

