

Bob Hunter Park Management Plan – Rouge Park

Development Services Committee
October 2, 2007





Purpose

- ❑ Provide Committee with an update on the Rouge Park/TRCA Bob Hunter Management Plan process
- ❑ Obtain preliminary feedback and input on the draft Management Plan



Draft Bob Hunter Management Plan

- ❑ October 2005, Province announced the dedication of the Bob Hunter Memorial Park to be part of the Rouge Park
- ❑ 477 acres (193 hectares west of LRCCMP)
- ❑ Lands intended to be conveyed by ORC to TRCA
- ❑ 14 buildings/leases to be managed by TRCA
- ❑ Name changed by the Rouge Park to Bob Hunter Environmental Area

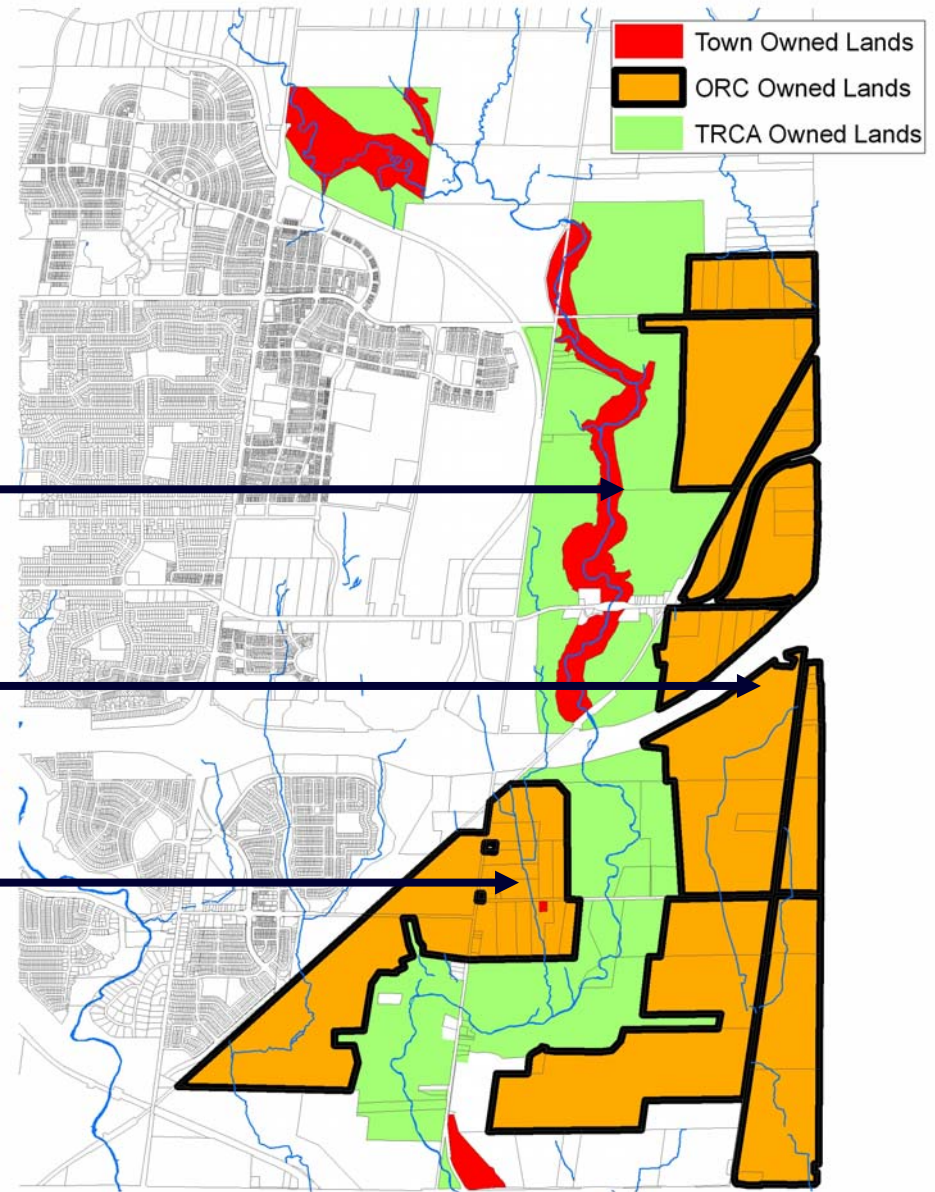


Rouge Park Planning Process

- ❑ Consultants retained by Rouge Park and TRCA to undertake the Management Plan funded by the Province
- ❑ Draft Plan released for staff comments in August 2007
- ❑ Bob Hunter Management Plan targeted for consideration by the Rouge Park Alliance in November concurrent with the Little Rouge Creek Management Plan

Ownership and Context

- Little Rouge Creek Corridor
- Eastern Markham Planning Area
- Bob Hunter Environmental Area



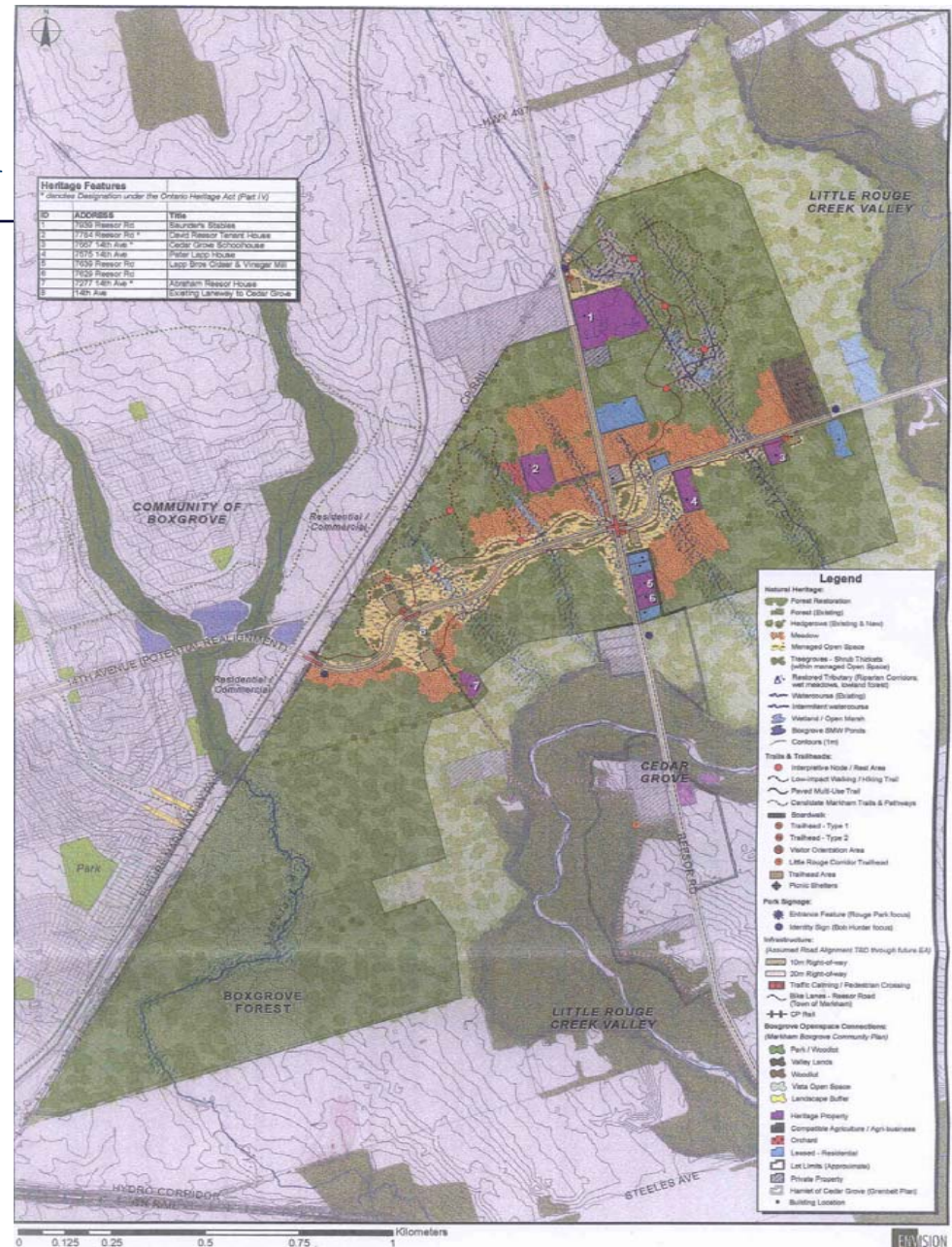


Park Approach

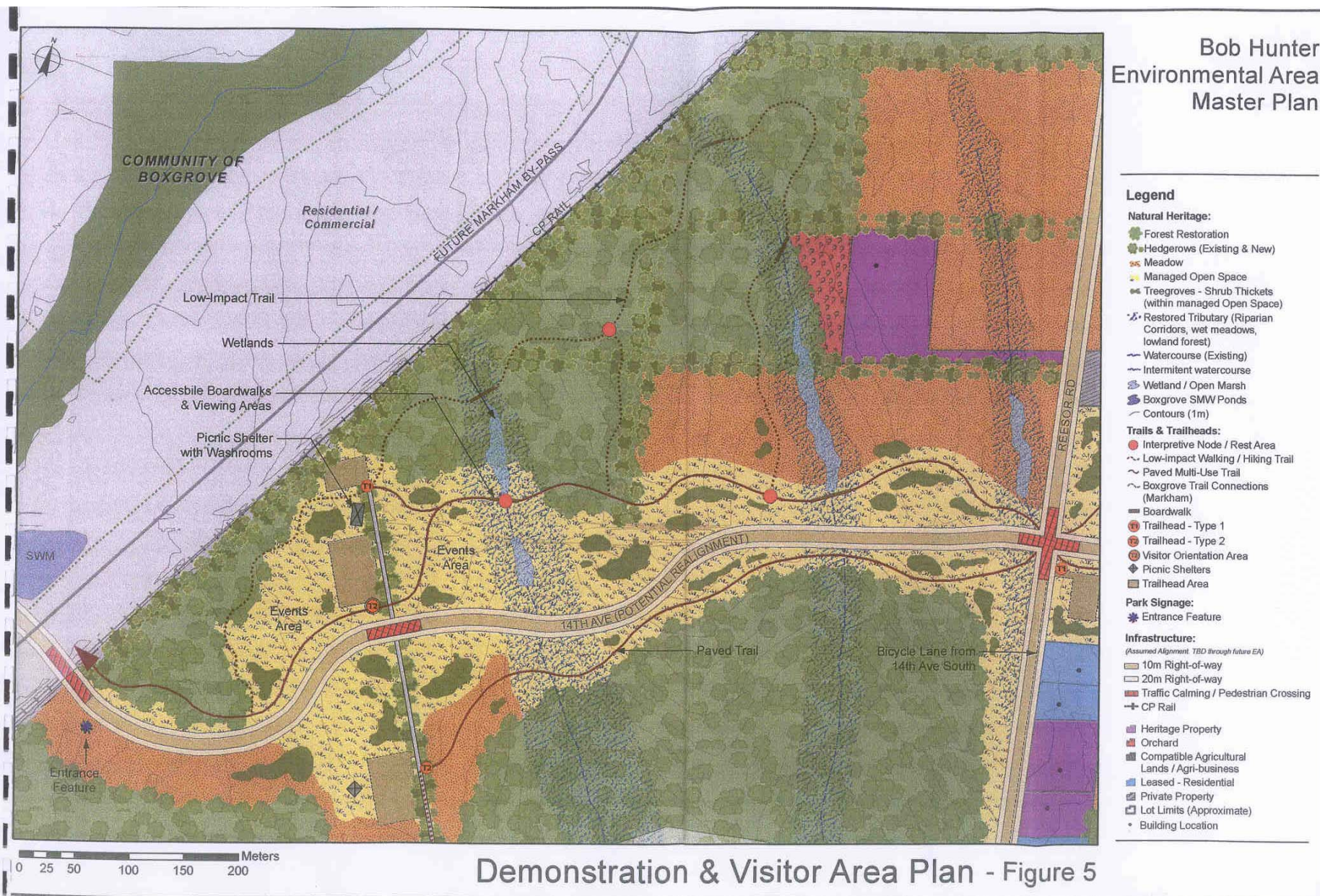
- ❑ **Environmental:** Significant Reforestation (70% of lands to be reforested)
- ❑ **Public Use:** Recreational uses concentrated along 14th Avenue corridor and Tributary C (north of 14th and west of Reesor) comprising trails and picnic areas
- ❑ **Financial:** Park implementation estimated at \$6 million (proposed to be funded through partnership arrangements with TRCA, Province, York and Markham)

Draft Bob Hunter Management Plan

- ❑ Forest, restored forest, meadow, managed area
- ❑ Public use areas (trails and picnic areas)
- ❑ Boxgrove Forest
- ❑ Heritage properties
- ❑ Leased properties
- ❑ Private properties
- ❑ Town property



Bob Hunter Environmental Area Master Plan



Demonstration & Visitor Area Plan - Figure 5



Preliminary Staff Comments

- ❑ Management Plan circulated to staff in Development and Community Services for comment

GENERAL COMMENTS

- ☑ Plan clearly reflects the Rouge Park objectives and provides for ecological enhancement, conservation and recreation
- ☑ Use of 14th Ave. as the park spine is a strong park design and function element
- ☑ Good system of trails and picnic areas for a passive recreational experience



Preliminary Staff Comments

- ❑ Need a maintenance and restoration strategy for heritage properties in the park and support for heritage property designations
- ❑ Consider expansion of public access to the park in the southern area adjacent to Box Grove and coordinate trail linkages with the Town's Pathways and Trails Master Plan
- ❑ Design of public infrastructure projects must defer to the Environment Assessment process (14th Ave.)



Preliminary Staff Comments

- ❑ Identify all planned infrastructure improvements
- ❑ Identify opportunities to generate revenue to pay for the capital and operations of the Park
- ❑ Identify short and long term financial expectations of the Town and a funding strategy as part of the Park Plan
- ❑ Ensure the trailheads with picnic use are of sufficient size to support park visitors
- ❑ Need to supply an operations and maintenance facility in either Bob Hunter or Little Rouge areas



Next Steps

- ❑ Staff to provide technical comments to the Rouge Park
- ❑ Staff Report to DSC in Fall/Winter in conjunction with the Little Rouge Creek Management Plan (currently being finalized by the Rouge Park and TRCA)



Thank You

□ Comments welcome