

### LEGEND

- Existing Stopping Prohibition
- Existing Parking Prohibition
-  Existing Signalized Intersection

### RODICK ROAD (Hwy 7 – 16<sup>th</sup> Ave)

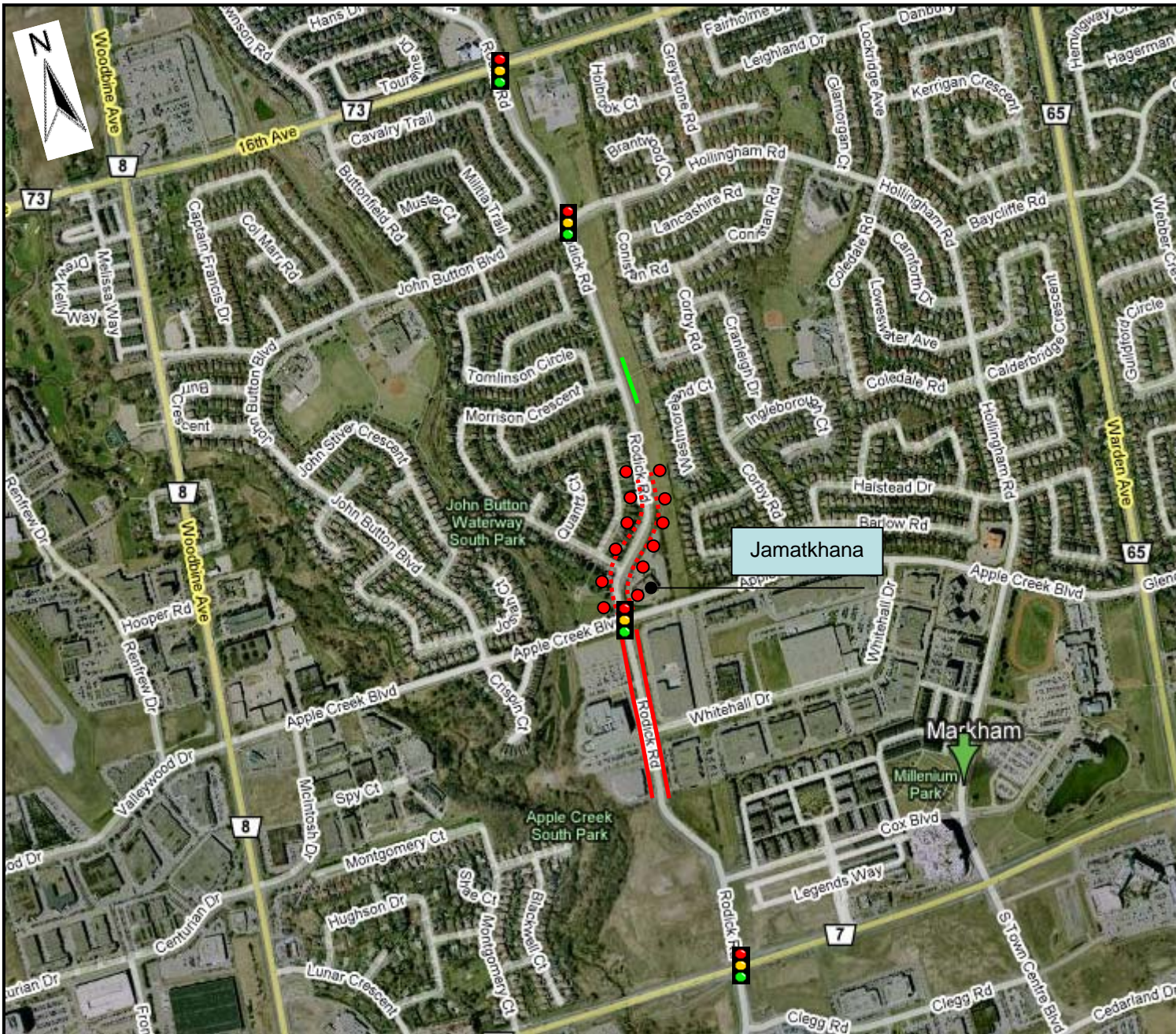
### Existing Parking Regulations



Engineering Dept.  
February 2008

### ATTACHMENT A





### LEGEND

- Existing Stopping Prohibition
- Existing Parking Prohibition
- ⋯ Proposed Stopping Prohibition
- Proposed Sign Location
- ● ● Existing Signalized Intersection

**NOTE:** Sign locations based on 50m spacing. Exact locations to be determined on-site

### OPTION 1

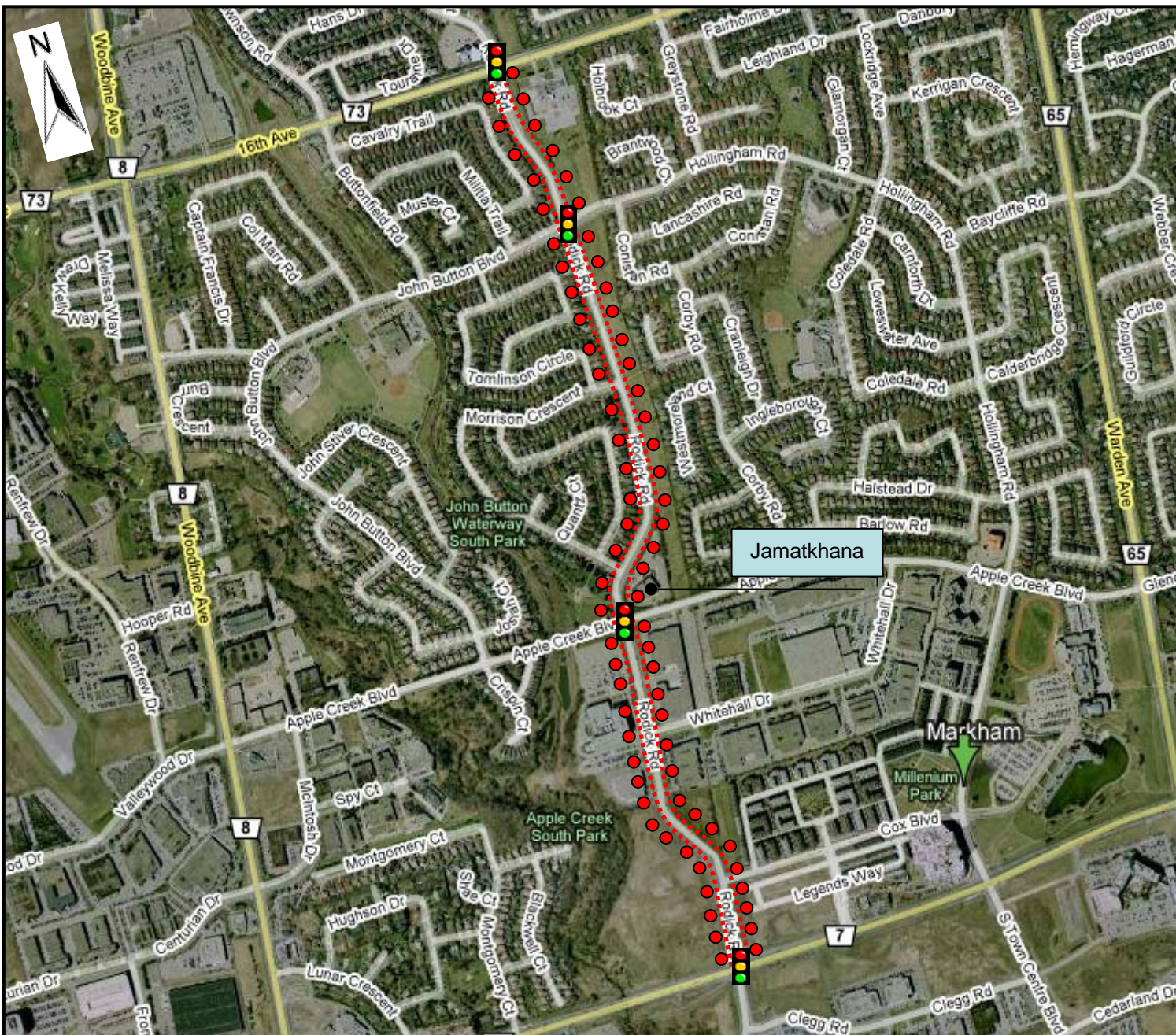
**No Stopping Anytime**  
(Apple Creek to just north of Morrison Cres)



Engineering Dept.  
February 2008

**ATTACHMENT B**





### LEGEND

- ..... Proposed Stopping Restriction (7am – 9am; 4pm – 6pm)
- Proposed Sign Location
- Existing Signalized Intersection

**NOTE:** Sign locations based on 50m spacing. Exact locations to be determined on-site

### OPTION 2

**No Stopping**  
**(7am – 9am;**  
**4pm – 6pm)**



Engineering Dept.  
 February 2008

**ATTACHMENT C**



