

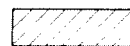
AREA CONTEXT/ZONING

APPLICANT: CLERA HOLDINGS LIMITED
2901 ELGIN MILLS ROAD EAST

FILE No: ZA 08121296



DEVELOPMENT SERVICES COMMISSION DWN BY:REK CHK BY:GD SCALE 1:



SUBJECT PROPERTY

DATE: OCT.31/08

FIGURE No.2



ZA08121296.dgn 31/10/2008 11:13:37 AM



AIR PHOTO 2007

APPLICANT: CLERA HOLDINGS LIMITED
2901 ELGIN MILLS ROAD EAST

FILE No: ZA 08121296



DEVELOPMENT SERVICES COMMISSION DWN BY:REK CHK BY:GD SCALE 1:



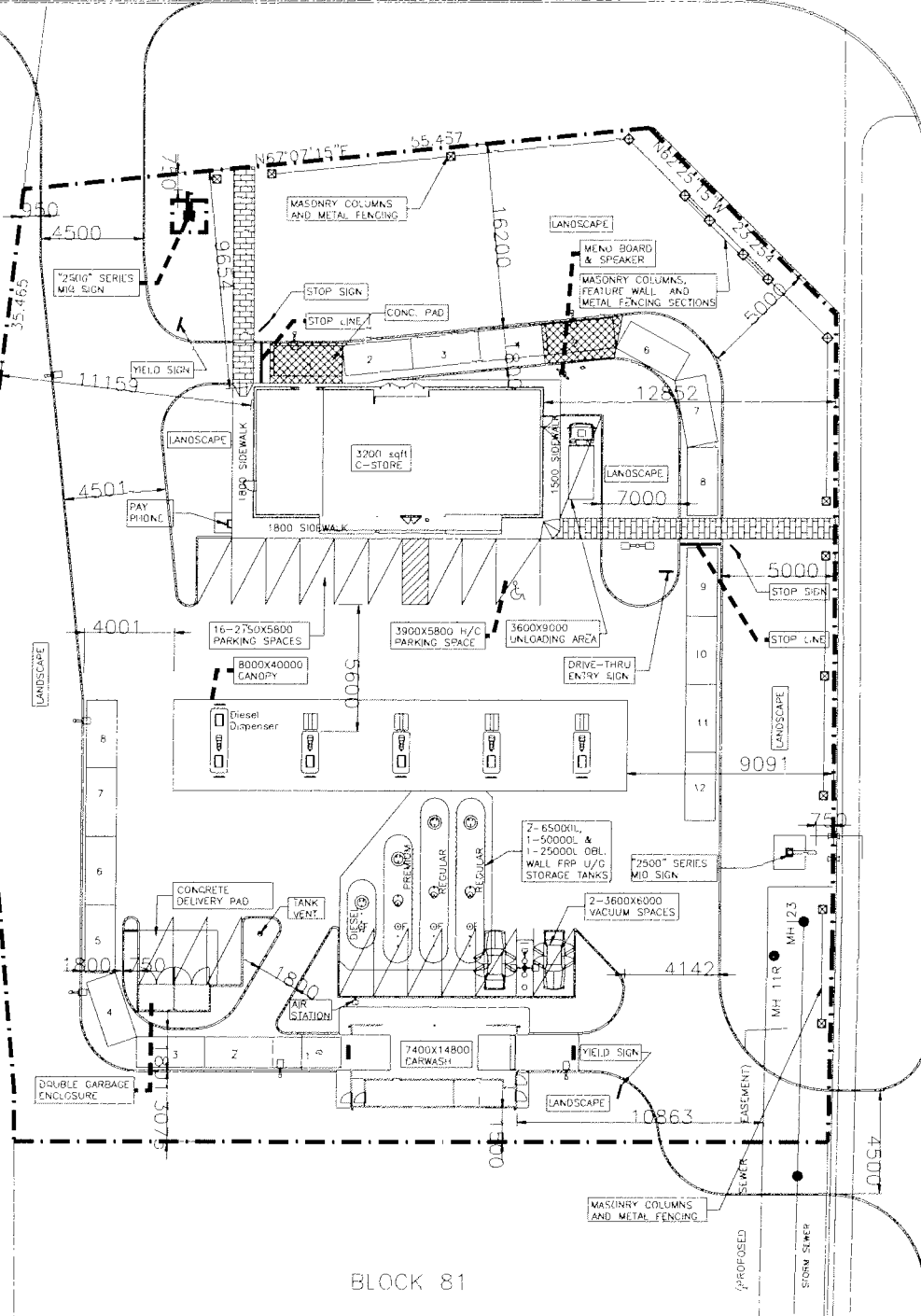
SUBJECT PROPERTY

DATE: OCT.3108

FIGURE No.3

ELGIN MILLS ROAD EAST

WOODBINE AVENUE BY-PASS



BLOCK 81

CONCEPTUAL SITE PLAN

APPLICANT: CLERA HOLDINGS LIMITED
2901 ELGIN MILLS ROAD EAST

FILE No: ZA 08121296

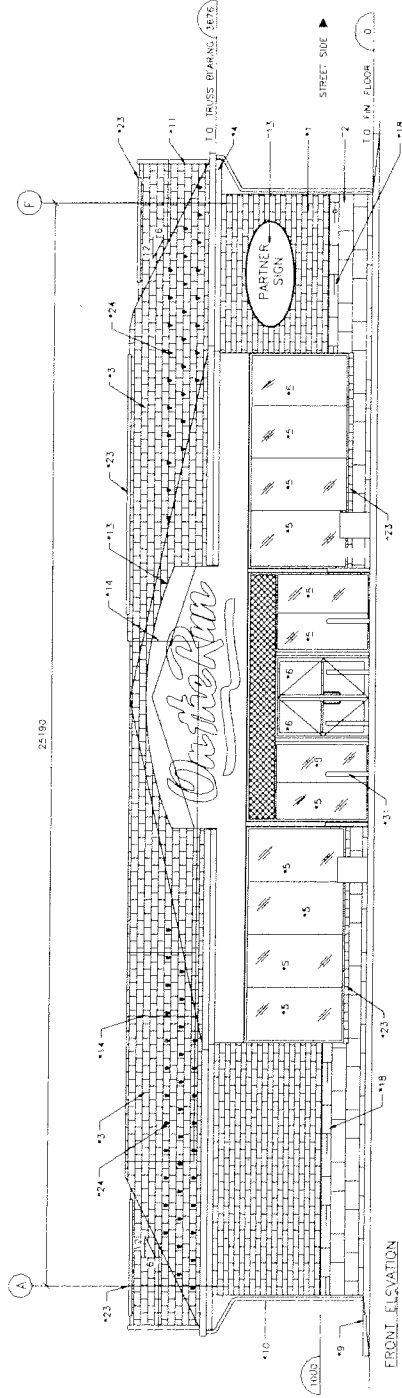


DEVELOPMENT SERVICES COMMISSION DWN BY:REK CHK BY:GD SCALE 1:

SUBJECT PROPERTY
DATE: OCT.31/08

FIGURE No.4

ZA08121296.dgn 31/10/2008 3:04:30 PM



ELEVATIONS

APPLICANT: CLERA HOLDINGS LIMITED
2901 ELGIN MILLS ROAD EAST

FILE No: ZA 08121296

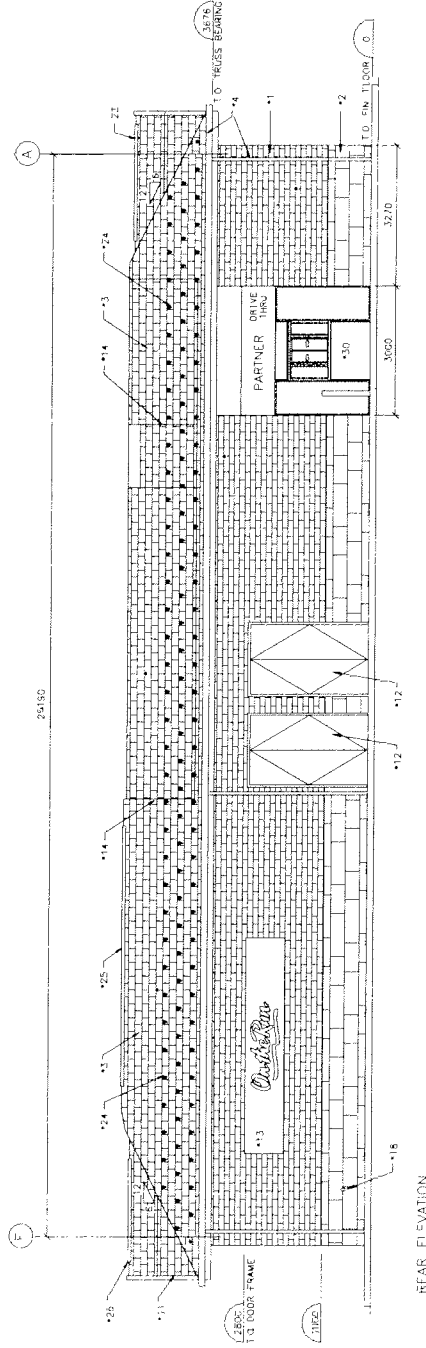
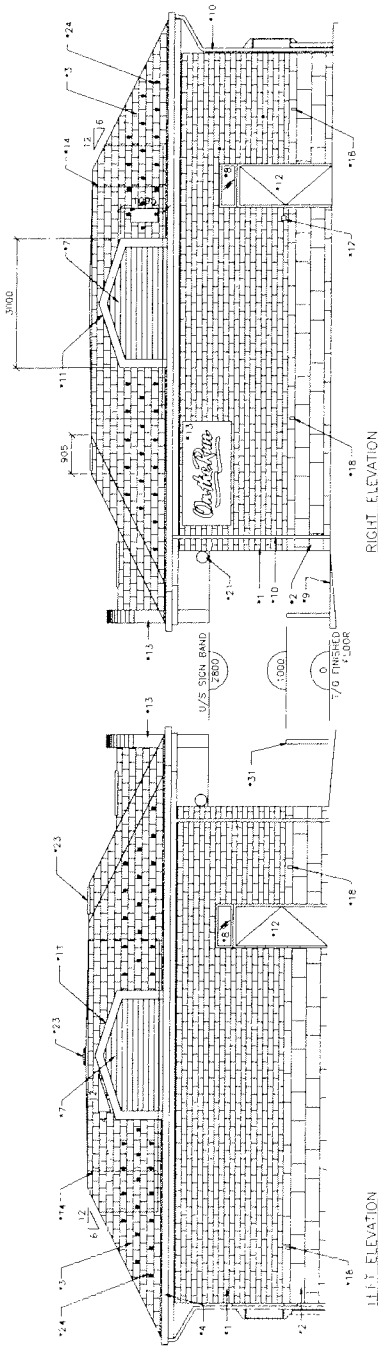


DEVELOPMENT SERVICES COMMISSION

DRAWN BY: REK CHECKED BY: GD SCALE 1:

DATE: OCT3008

FIGURE No.5



ELEVATIONS

APPLICANT: CLERA HOLDINGS LIMITED
2901 ELGIN MILLS ROAD EAST

FILE No: ZA 08121296



DEVELOPMENT SERVICES COMMISSION

DRAWN BY: REK CHECKED BY: GD SCALE 1:

DATE: OCT/30/08

FIGURE No.6

Appendix 'A'



Imperial Oil Limited
Products and Chemicals Division
P.O. Box 1490
Fonthill, Ontario
L0S 1E0

Don Dussault
Manager -Real Estate Development
Tel: (905) 736-0194
Fax: (905) 892-4995
EMail: don.l.dussault@esso.ca

(Courier Address:
20 Longspur Circle,
Fonthill, ON, L0S 1E2)

October 30, 2008

Town of Markham
101 Town Centre Boulevard
Planning and Urban Design Department
Markham, ON
L3R 9W3

Attention: Mr. Geoff Day -Planner

Re: Request for Full Pump Service for Disabled Customers at Imperial Oil
Proposed New Service Station at the S/W corner of Elgin Mills & Woodbine
Bypass, Markham, ON

Dear Mr. Day,

This letter relates to our recent discussion on the above subject and Markham Council's resolution regarding pump service for patrons having special needs.

Imperial Oil has a national program in place for Drivers with Disabilities. This program has been in place since 2003 and is available at participating Esso stations across Canada including our 9 sites in Markham. An overview of the program is attached for your reference and details are available on the Imperial Oil web site: ImperialOil.ca /products/fuels.

In addition to this program, all of our new stations, including our new Markham sites, have been designed and built to have regard for accessibility for persons with disabilities. For example, we have wheelchair accessible washrooms, dedicated disabled parking spaces, wheelchair ramps into our stores, store layouts with wide aisles to accommodate wheelchairs, and our "Speedpass" readers at the pumps and inside the store to make it easier to pay for purchases.



In October 2005, in response to Markham Council's request and in the "spirit of compromise and open mindedness", we agreed to test the concept of providing full service 12 hours/day 7 days/week at our new station located at Hwy #48 & Major Mackenzie Dr. This site opened 1 year ago and full serve sales to date have been very disappointing in that they represent only 1.4 % of total sales. For reference purposes, our full serve pumps represent 16.7% of our site pumping capacity and full serve labour costs are approximately 40% of our total site labor cost during full serve hours.

I have reviewed this development opportunity and the facility we plan to construct along with the services/programs that we offer, with our senior management, and our proposal remains to construct a modern retail facility including our ON-THE-RUN store with Tim Horton's, car wash, and self serve gasoline.

We trust that City Council and staff will support our position on this matter and I would be pleased to discuss this subject further and answer any questions.

I look forward to you response.

Yours truly,

A handwritten signature in black ink, appearing to read "Don Dussault".

Don Dussault, MBA
Manager, Real Estate Development
Imperial Oil Limited

Drivers with Disabilities

All drivers deserve the same consideration and respect. That's why, at Esso, we've made it easy for our customers with disabilities to access Esso service stations.

Drivers with disabilities can get full service gas at self-serve prices at participating Esso stations that have both full and self serve pumps. You can even get full service gas at self-serve prices at participating Esso stations with self-serve pumps only*! All you have to do is call the station approximately 24 hours in advance to ensure that someone will be available to assist you. You will need to have a vehicle permit for persons with disabilities to take advantage of this service.

At most Esso stations, you'll also find:

- Wheelchair-accessible washrooms – we've had them since 1990!
- Dedicated parking spaces
- Wheelchair ramps into our stores
- Store layouts to accommodate wheelchairs
- *Speedpass*™ readers at the pumps and inside the store – which makes it even easier for you to pay for fuel and more. For more information on *Speedpass*, (web)

If you have any questions, or would like to find a service station near you offering full service at self-serve prices (web) or call our Customer Service Centre at 1-800-567-3776.

* Please note that this self-serve pricing offer is not available at full-serve only stations.