



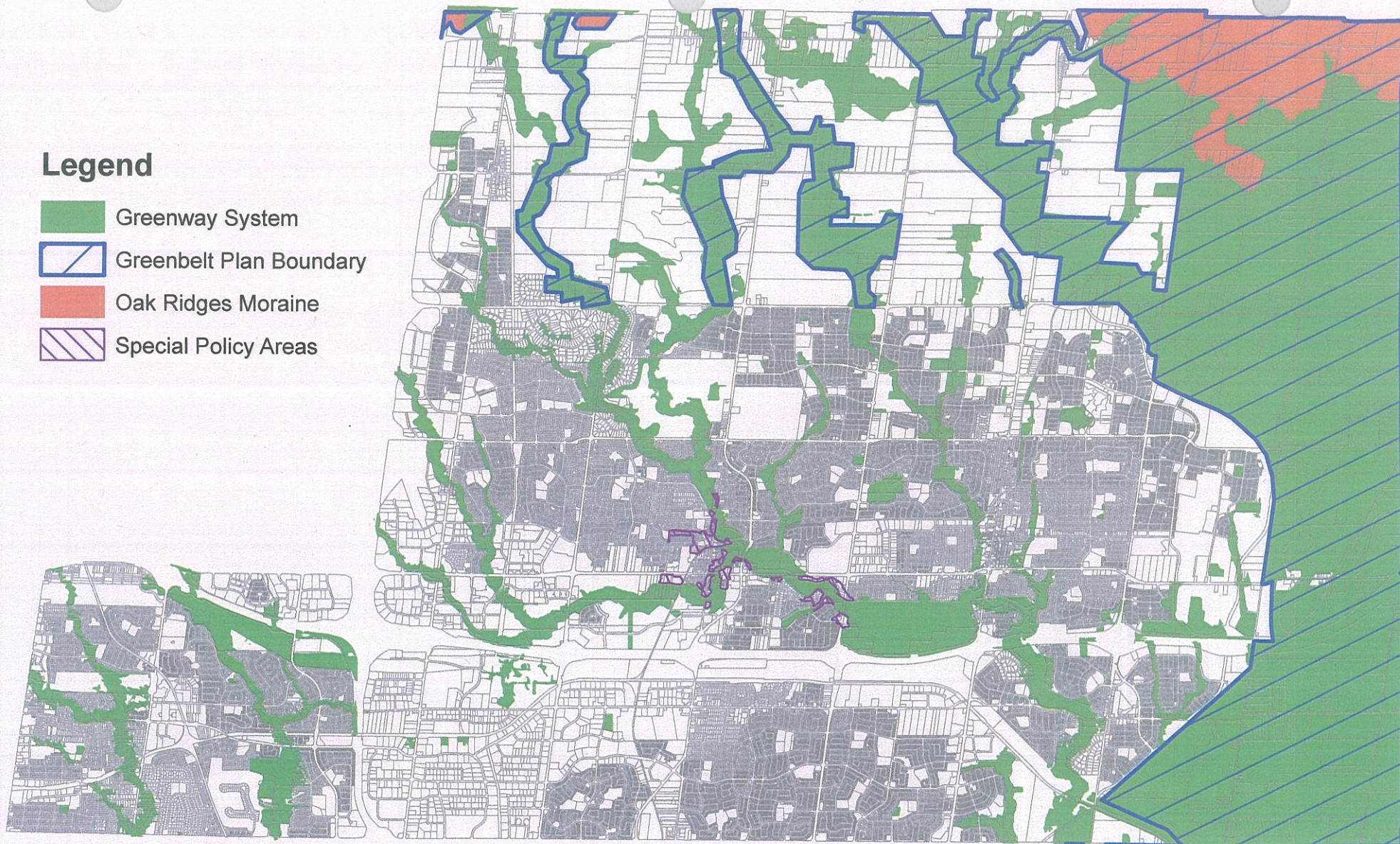


## Legend

-  Greenway System
-  Greenbelt Plan Boundary
-  Oak Ridges Moraine
-  Special Policy Areas



# Proposed Town Greenway System



DEVELOPMENT SERVICES COMMISSION



FIGURE No.1



## Potential Residential Intensification Areas

Settlement Area Boundary

Regional Centre

Markham Centre  
Langstaff Gateway

Key Development Area

Cornell Centre  
Yonge/Steeles Corridor  
Commerce Valley/Galleria  
Markville  
Woodbine/404  
Yonge North Corridor

Major Corridor

Markham Rd Corridor - Mount Joy  
Markham Rd Corridor - Armadale  
Steeles East Corridor  
Kennedy Corridor - South Unionville  
Avenue Seven Corridor - Village Pkwy

Local Centres and Corridors

Fairtree East - Parkview Centre  
Milliken Centre  
Thornhill Centre  
Cathedraltown Centre  
Cornell North Centre  
Kennedy Corridor - Berczy

Infill / Redevelopment

## MetroLinx draft RTP - Rapid Transit Projects

Richmond Hill Line: Richmond Hill GO to Union Station (2-way all day by 2023)(Express Rail 2033)  
Stouffville Line: Mt Joy GO to Union Station (2-way all day by 2023)  
Havelock Line: Locust Hill to Union Station (peak service by 2023)  
Yonge Subway: Finch to Langstaff / Richmond Hill Gateway (by 2016)  
Viva Hwy 7: Peel Boundary to Locust Hill (BRT by 2023)  
Don Mills: Bloor-Danforth Subway to Hwy 7 (LRT by 2023)

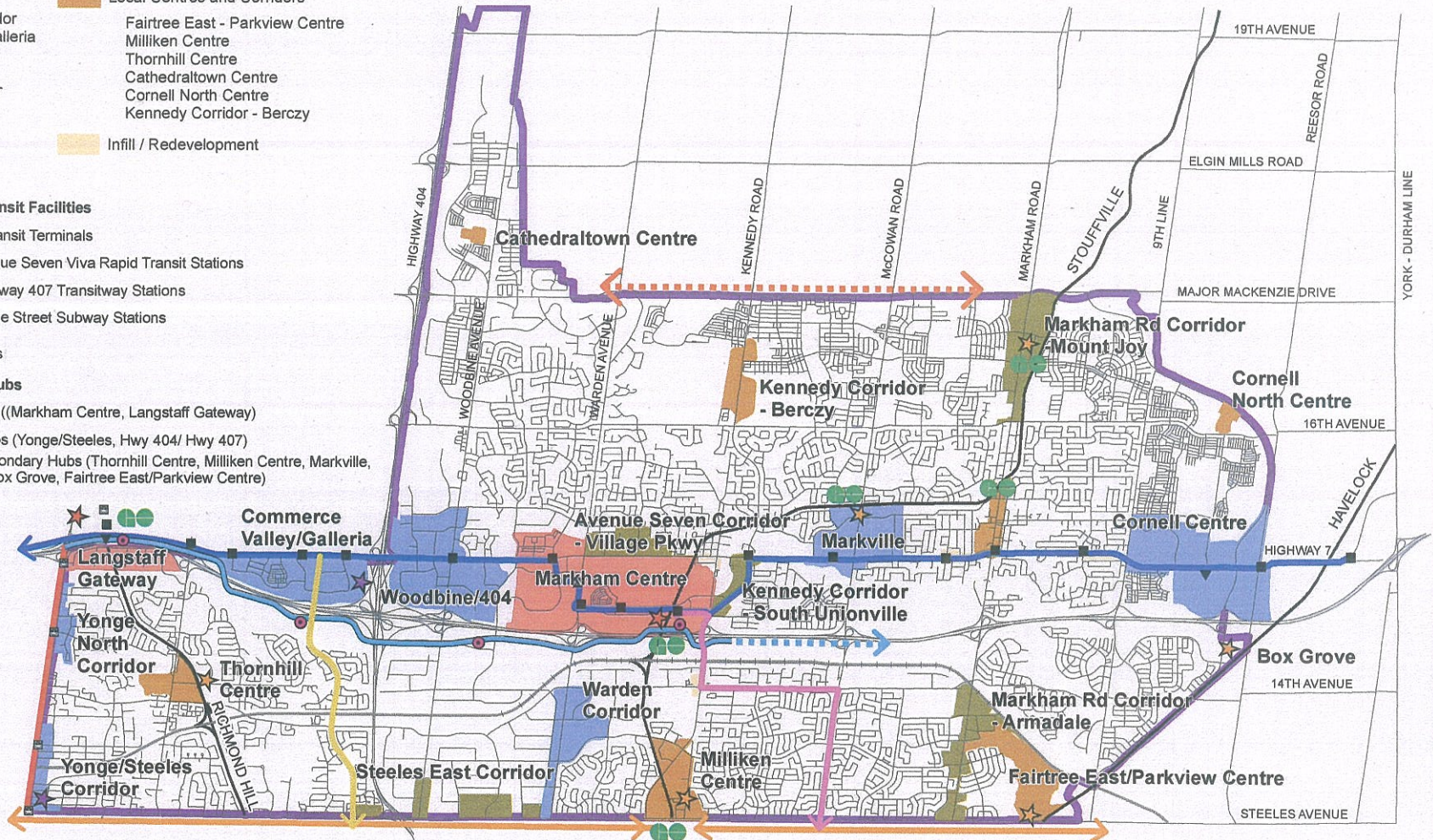
Highway 407 Transitway: Vaughan Corp Centre to Markham Centre (BRT by 2033)  
Steeles: York University to Milliken GO (BRT by 2033)  
Steeles: Milliken GO to Downtown Oshawa (BRT by 2033)  
Markham-Pickering: Markham Centre to Downtown Pickering via 401 (BRT by 2033)  
Extension of Highway 407 Transitway (BRT 2033+)  
Major Mackenzie Drive (BRT 2033+)

## Proposed Rapid Transit Facilities

- ▼ Viva Rapid Transit Terminals
- Potential Avenue Seven Viva Rapid Transit Stations
- Potential Highway 407 Transitway Stations
- Potential Yonge Street Subway Stations
- GO Stations

## Potential Mobility Hubs

- ★ Anchor Hubs ((Markham Centre, Langstaff Gateway)
- ★ Gateway Hubs (Yonge/Steeles, Hwy 404/ Hwy 407)
- ★ Potential Secondary Hubs (Thornhill Centre, Milliken Centre, Markville, Mount Joy, Box Grove, Fairtree East/Parkview Centre)



# Potential Intensification Areas and Rapid Transit Improvements

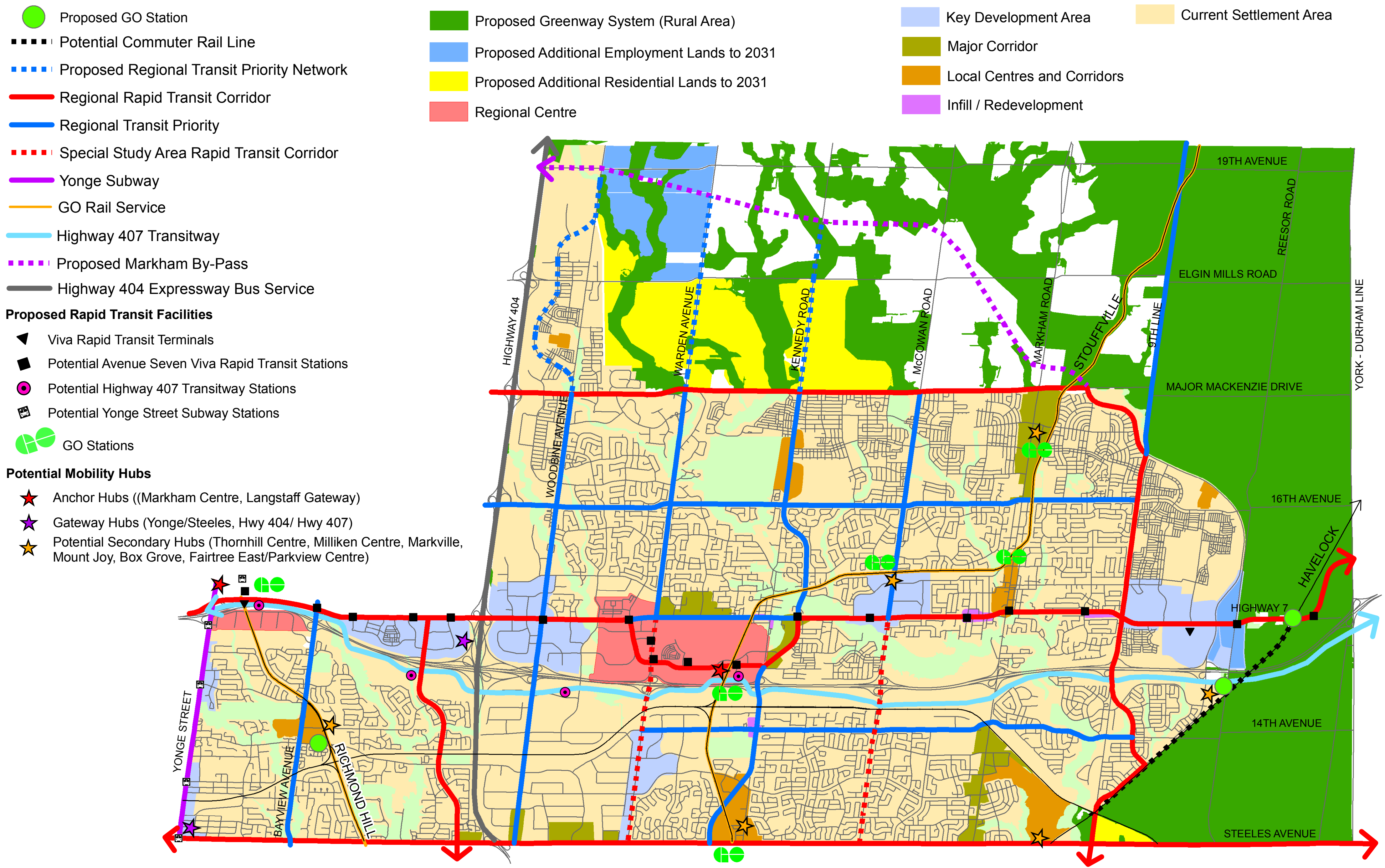


DEVELOPMENT SERVICES COMMISSION



FIGURE NO. 2





# Recommended Growth Alternative to 2031

