

Mount Joy GO Station West Surface Parking Lot Expansion – 9577 Markham Road

Presentation to the Town of
Markham – Development Services
Committee June 1, 2010

1

Our Goal for this Project

- Construct a functional, aesthetic, pedestrian, bicycle, PPUDO friendly, and transit oriented surface parking facility
- Enhanced landscaping, and use of “green initiatives”
- The property will accommodate 500+/- spaces
- Remediate the current contamination on the site

Project Scope

- Expanded PPUDO area
- Additional bike shelter(s)
- New scooter parking
- New accessible pedestrian routes
- Additional platform shelter
- Expanded surface parking area

Today's Situation

- The site was formerly owned by a manufacturer of conveyor systems - an industrial use
- Unsightly, noisy, and odorous – not a conducive use for the encroaching residential developments
- Contaminated site
- GO requires more parking to accommodate both current and projected 2021 passenger forecasts.
- Contemplated increases in service to this station
- Parking facility operating at capacity

Today's Situation, *cont'd...*



5

Today's Situation, *cont'd...*

The current modal split at this station is as follows:

- PPUDO - 11.8%
- Walk - 7.8%
- Bike - 0%
- Transit - 2.9%
- Double occupancy - 5.7%
- Park and Ride - 68.8%

Ridership

Current

- Rail only = 1381 passengers on 5 trains
- ## 2021 Passenger Forecasts

2021 Forecast

- Rail Only = 3500 passengers

Parking Supply

Current = 821 spaces

New = 500 “

Total = 1321 “

Based on 2021 forecasts and Park and Ride usage, only 207 spaces will be available for use when service is expanded to this station in 2013, and to accommodate the burgeoning development in this area.

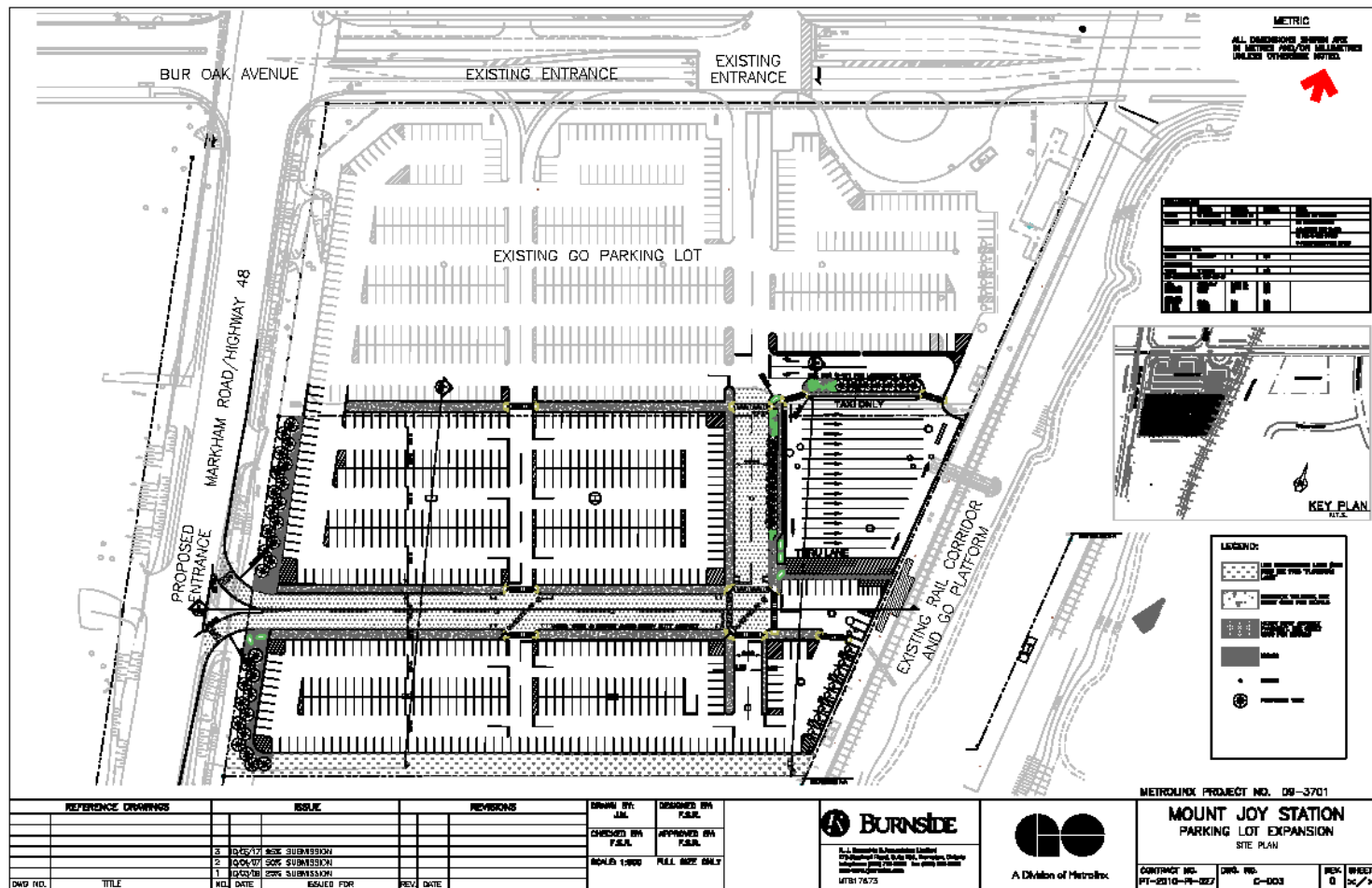
Projected Parking Demand - 2021

- Required number of spaces by 2021 = 2400 spaces

Traffic Impact

- Markham & Bur Oak intersection at capacity by 2015 due to development growth
- Markham Road EA underway
- GO Station traffic small cumulative effect compared to development growth projections by Town
- Recommend new right in/right out access to Markham Road

11



Rendering – Birds Eye View



12

Rendering Street View



13

Going Forward...

- GO is receptive to development of its sites given that the growth is fiscally responsible and GO Operations are not adversely affected.
- All day rail service
- Expanded bus service/loop for improved regional transit access
- Multi-level parking structure when it is viable
- Joint Developments
- Site re-development

Construction Time Line

Construction Completion – Fall 2011