



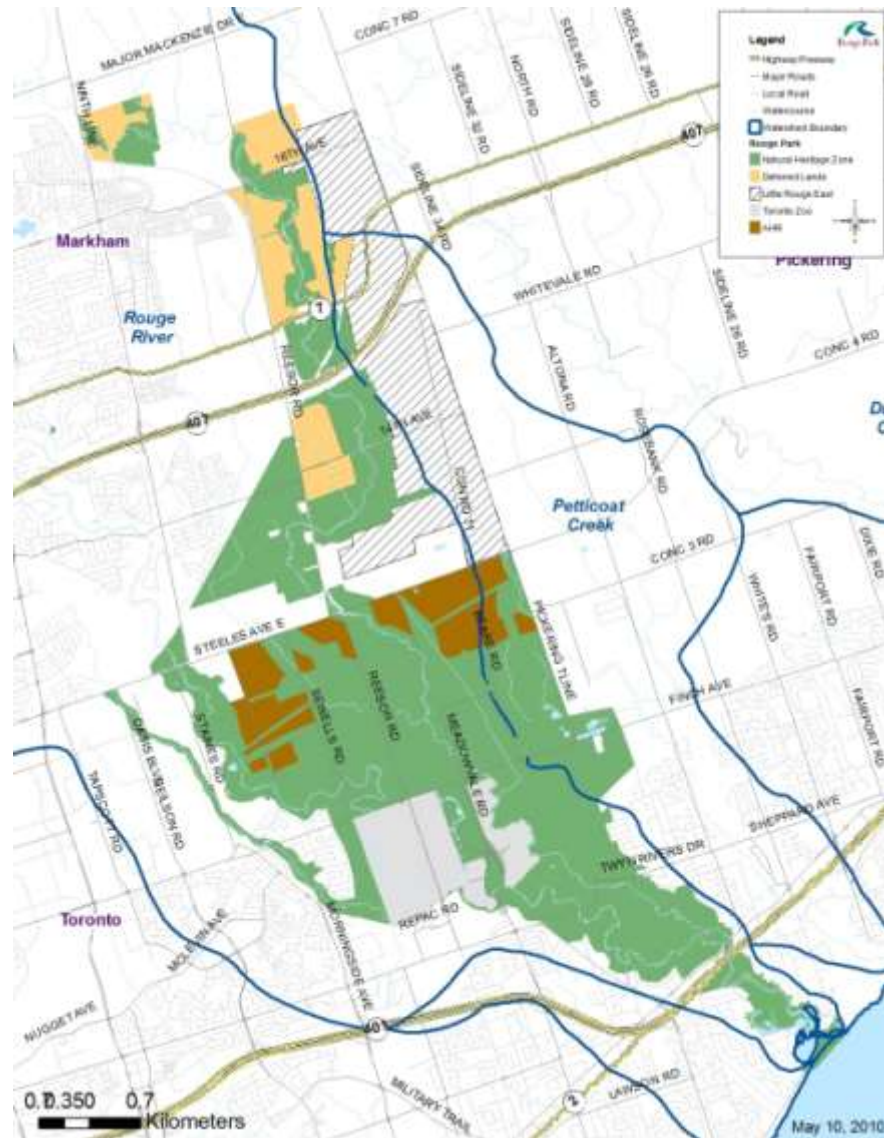
Rouge Park



Rouge Park North Consolidated Plan

Presentation to Town of Markham
Development Services Committee
November 2nd, 2010

Rouge Park





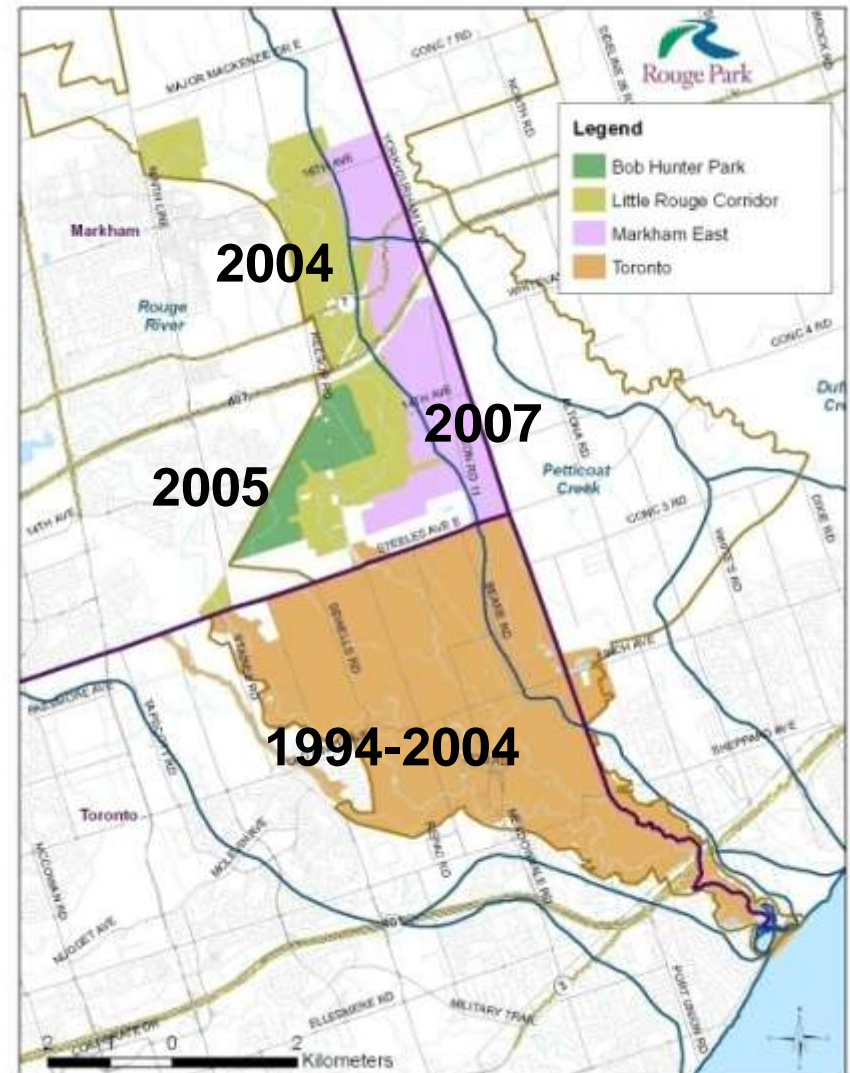
Rouge Park *Management areas*

1558 ha (3850 ac) in Markham

- Little Rouge Corridor – 2004
- Bob Hunter Memorial Park – 2005
- Markham East Lands - 2007

2383 ha (5889 ac) in Toronto

Total 3941 ha (9739 ac)





Park Objectives

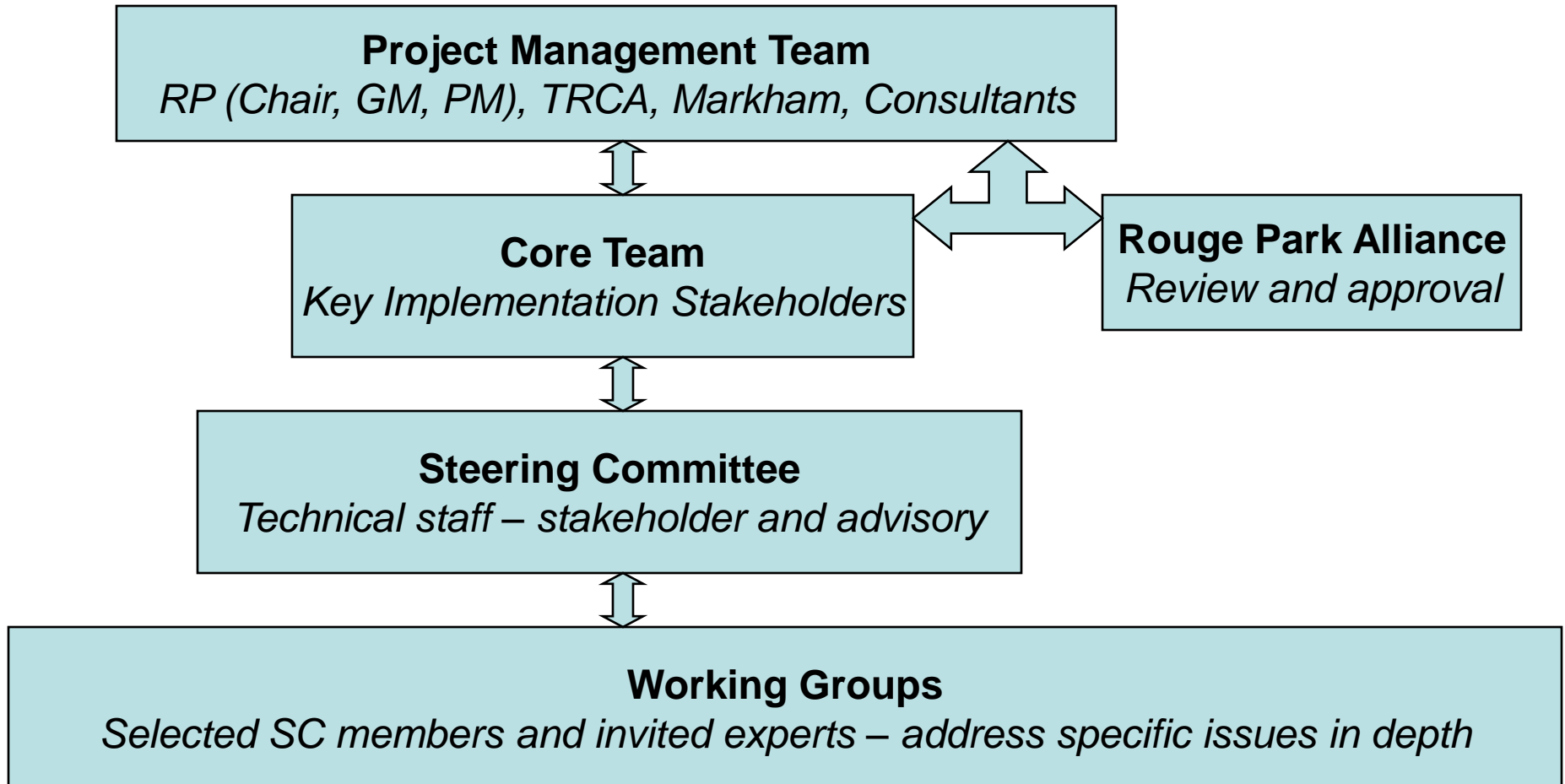
- Natural Heritage
- Cultural Heritage
- Land Use
- Management
- Interpretation
- Recreation
- Agriculture (added in 2010) **Protect agriculture as a land use that is consistent with all other Park objectives.**

Specific goals of the Rouge Park North Consolidated Plan

Complete a management plan for Rouge Park lands in Markham that will:

- Build upon the vision, goals and strategies outlined in previous management plans and partner documents
- Consolidate plans for the LRC (2007), BHMP (2007) and draft strategies prepared for the Markham East Lands
- Update plans to incorporate new information and Rouge Park Alliance direction.
- Incorporate results of consultations with partners, stakeholders and the public.
- Recommend visitor use / trailhead areas. Highlight features to be incorporated into future interpretive programs and recommend ways to incorporate existing built heritage structures into park functions.
- Recommend measures needed to sustain viable agriculture in areas designated for farming.
- Recommend strategies to establish the targeted natural heritage system, incorporate quality visitor experiences and maintain agriculture in designated areas.
- Recommend strategies to avoid or minimize damage from infrastructure and future growth, and to ensure that a positive net environmental benefit can be achieved from all infrastructure development in and around Rouge Park.
- Address requests from Markham's RPITF report that have been agreed to by the RPA, including consideration of dog-off leash areas and large visitor use areas.

Study Administration





Study Components:

- **Phase 1 (Background Review)**
Background Summary Report
Core and Steering Committee meetings
- **Phase 2 (Development of Strategies)**
Draft Strategies and Mapping
Core and Steering Committee meetings
Working Group meetings
Public meetings and presentation to Markham Council
- **Phase 3 (Management Plan)**
Final Management Plan
Core and Steering Committee meetings
Working Group meetings
Public meetings and community group meetings
Rouge Park Alliance presentation
- **8 – 10 months**



Consultant Selection

Selection Committee:

Rouge Park, TRCA and Markham

Process

- RFP sent to 5 prequalified consulting firms (July 22nd, 2010).
- 2 proposals submitted and reviewed by Selection Committee
- Consultants invited to interviews
- Second Consultant interviews held with Agricultural sub-consultants
- Consultant retained subject to securement of funding and finalized work plan



Budget and required funding

- **Total cost: approximately \$150,000**
- **Request from Town of Markham:**
 - **\$50,000**
- **Additional request from York Region**
 - **\$25,000**

Rationale:

- Study area is located entirely in the Town of Markham.
- Considerable effort will be dedicated to addressing requests from Markham, including recommendations in the RPITF report.
- Markham staff are involved in the Selection Committee, Project Management Team, Core Team and Steering Committee.
- Study process will include one presentation to Markham Council.
- **The Town of Markham is also asked to assist in the funding request to York Region.**