

Highway 7 Rapidway Updates

VIVAnext

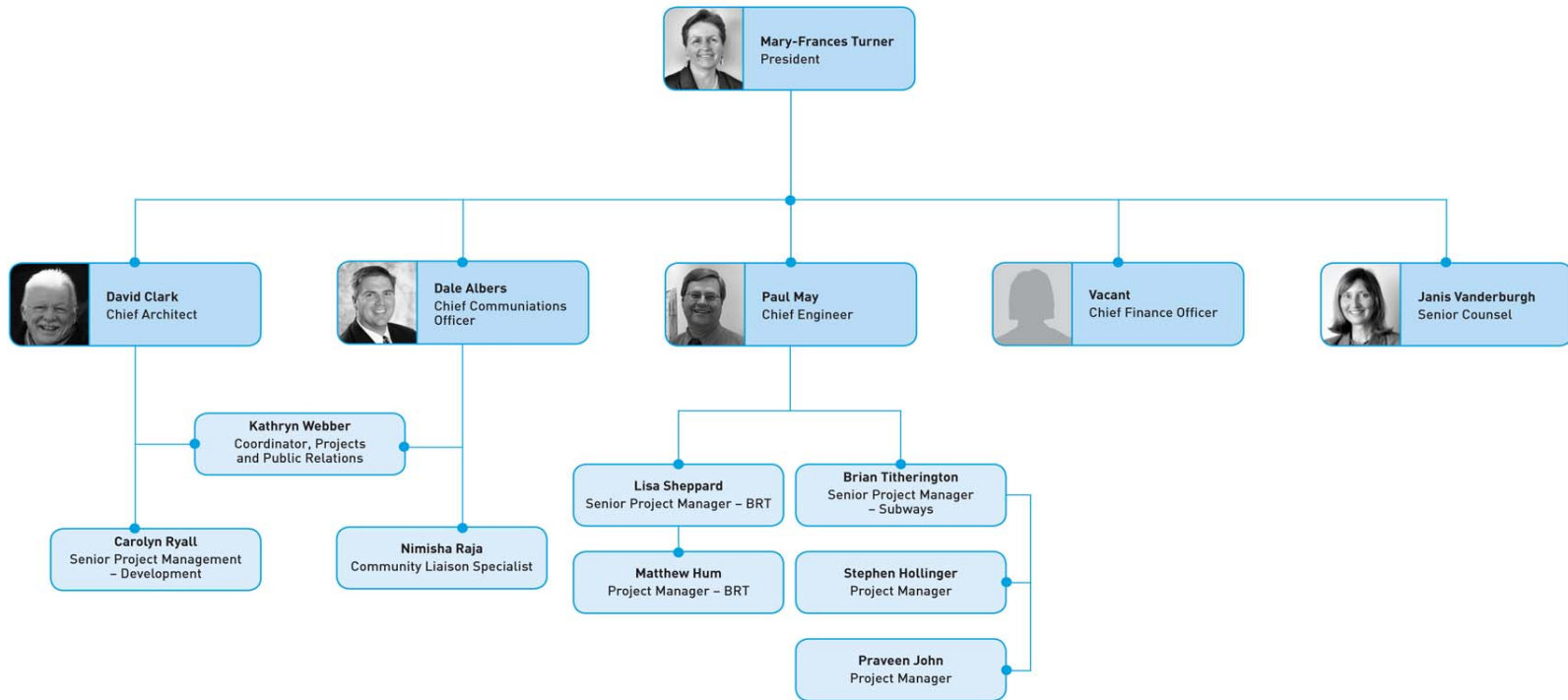


Town of Markham
Development Services Committee | February 8, 2011

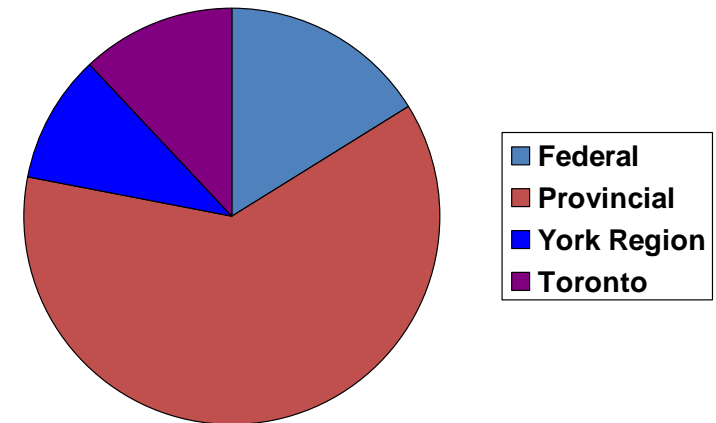
VIVAnext
way to go. way to grow.

who we are:

VIVAnext



major rapid transit project funding in York Region



successes of the past four years

- Spadina Subway extension
- BRT Funding
 - Enterprise near completion
 - Hwy. 7 and Davis Drive construction starting
- Operations, Maintenance and Storage facilities
- New Buses
- Yonge Subway EA approval
- RHC pedestrian bridge/ viva service/ridership growth

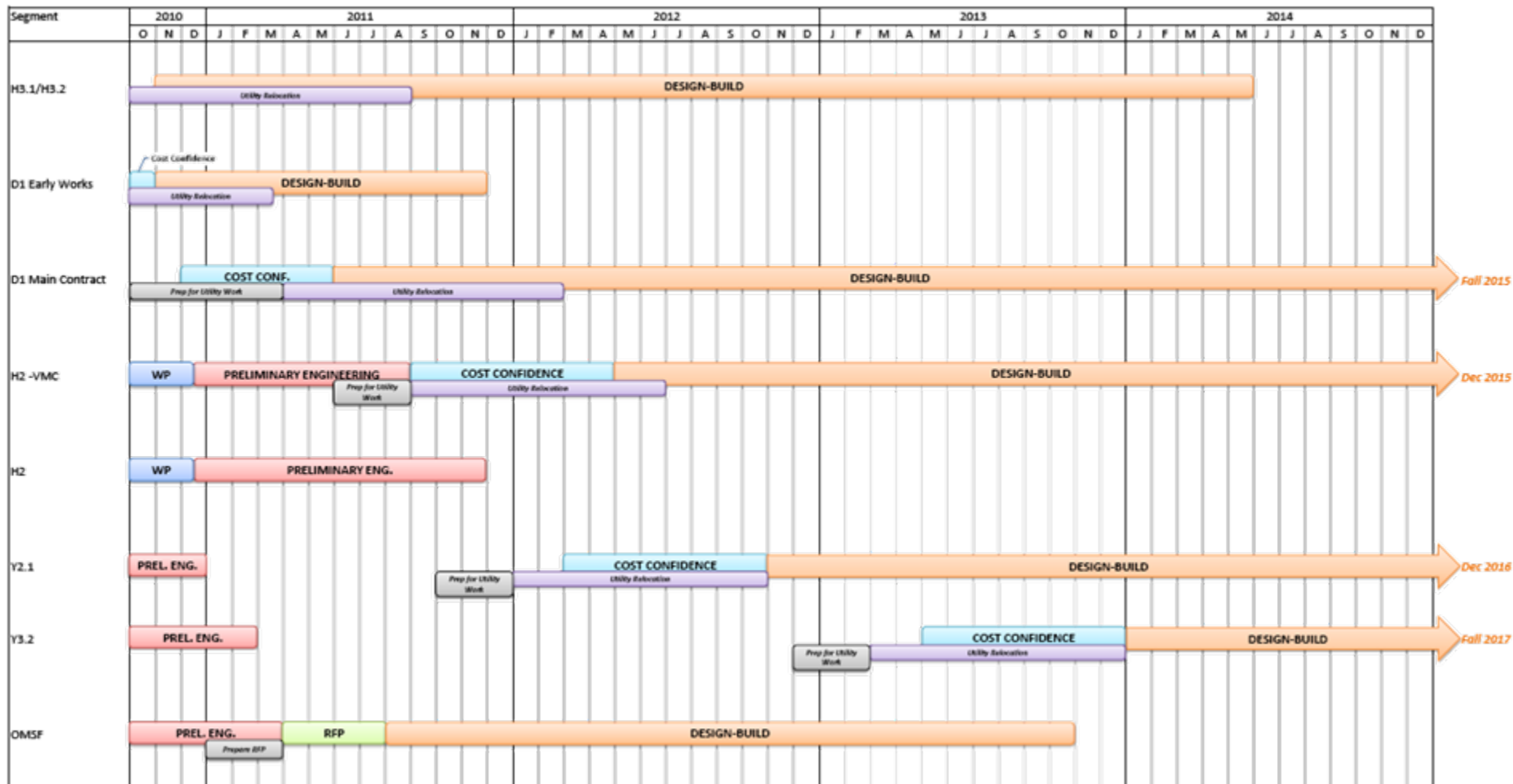


future vision of rapid transit corridors and centers

VIVAnext



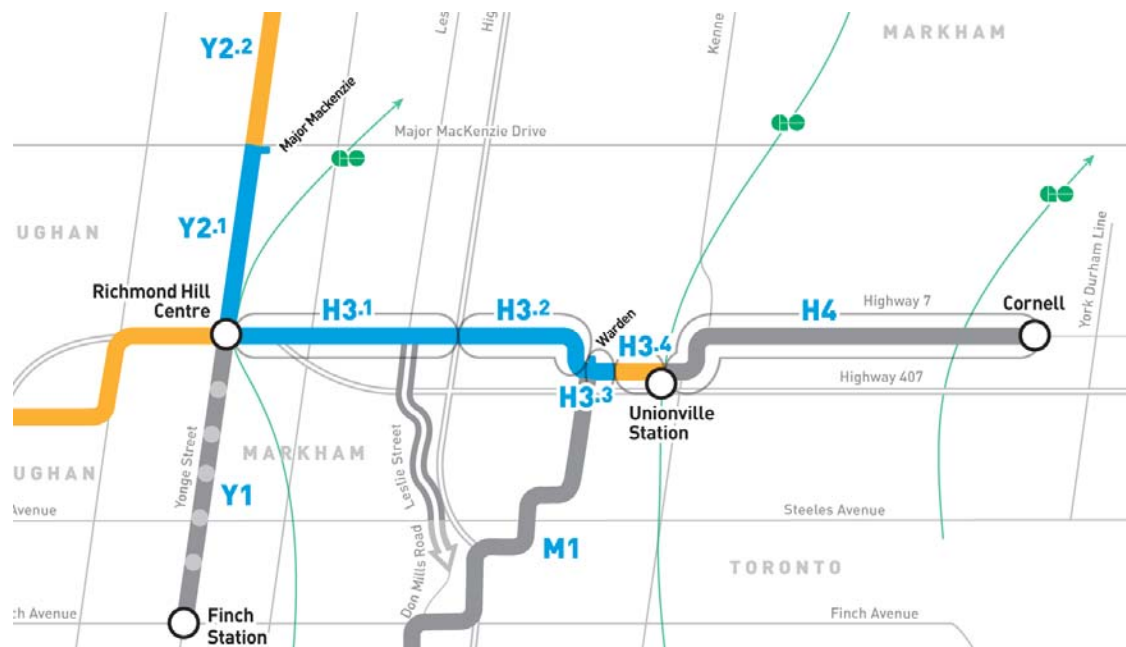
rapid transit projects underway



TYSSE

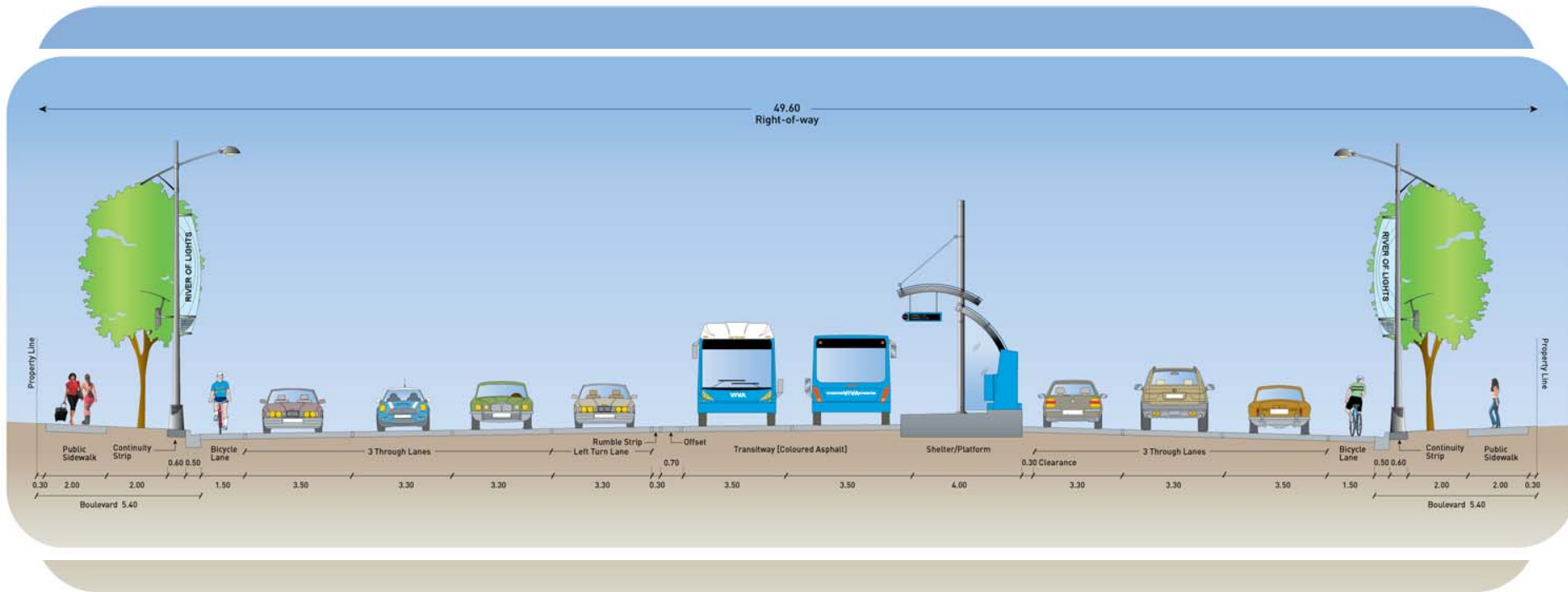
design

construction



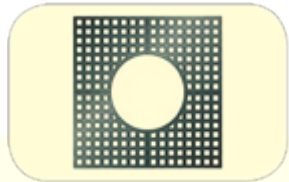
- H3.2 – Bayview to Town Centre, Cedarland to Warden
- Enterprise Blvd. – at the commissioning phase
- Approximately ?? km total
- 22 stations
- Bike lanes provided

what is a rapidway?

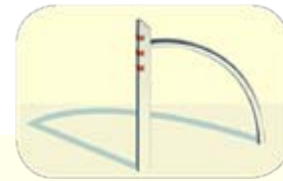


- 📍 Intersections vary, either 4-lane or 6-lane with left turn lanes
- 📍 Dedicated centre lane rapidways
- 📍 Fully landscaped boulevards and median plantings

› Examples of Viva standards



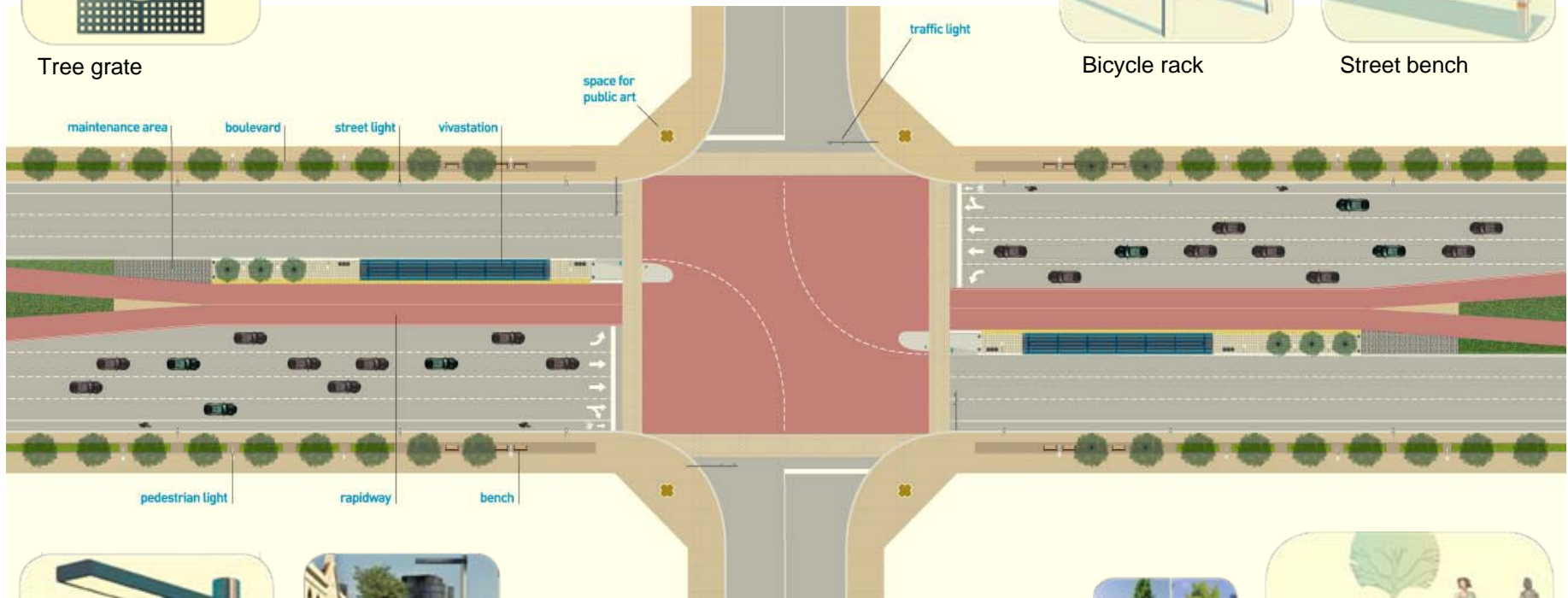
Tree grate



Bicycle rack



Street bench



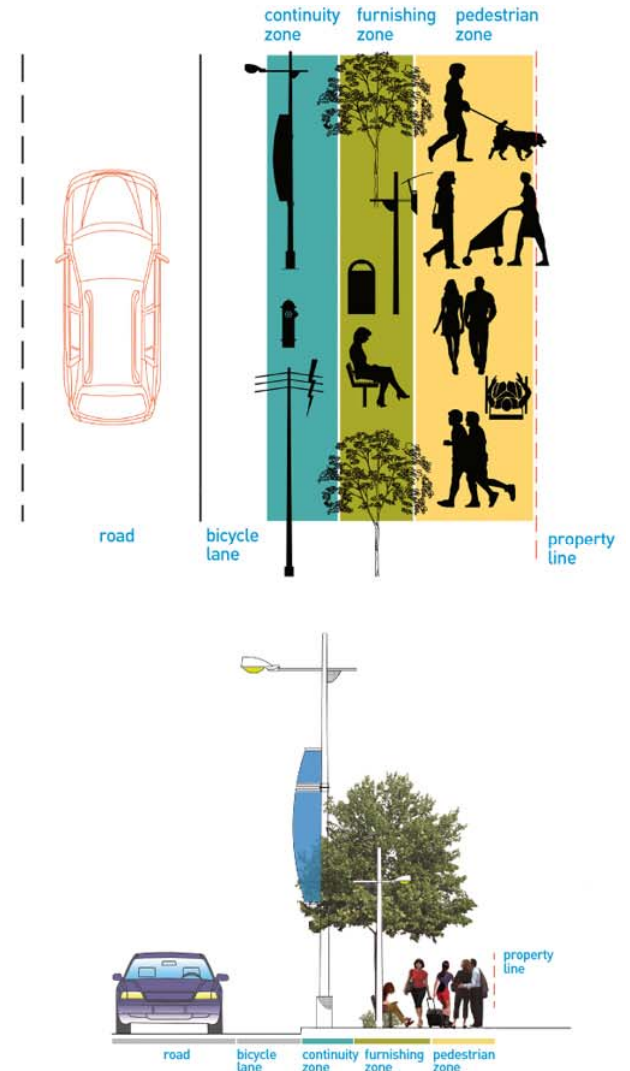
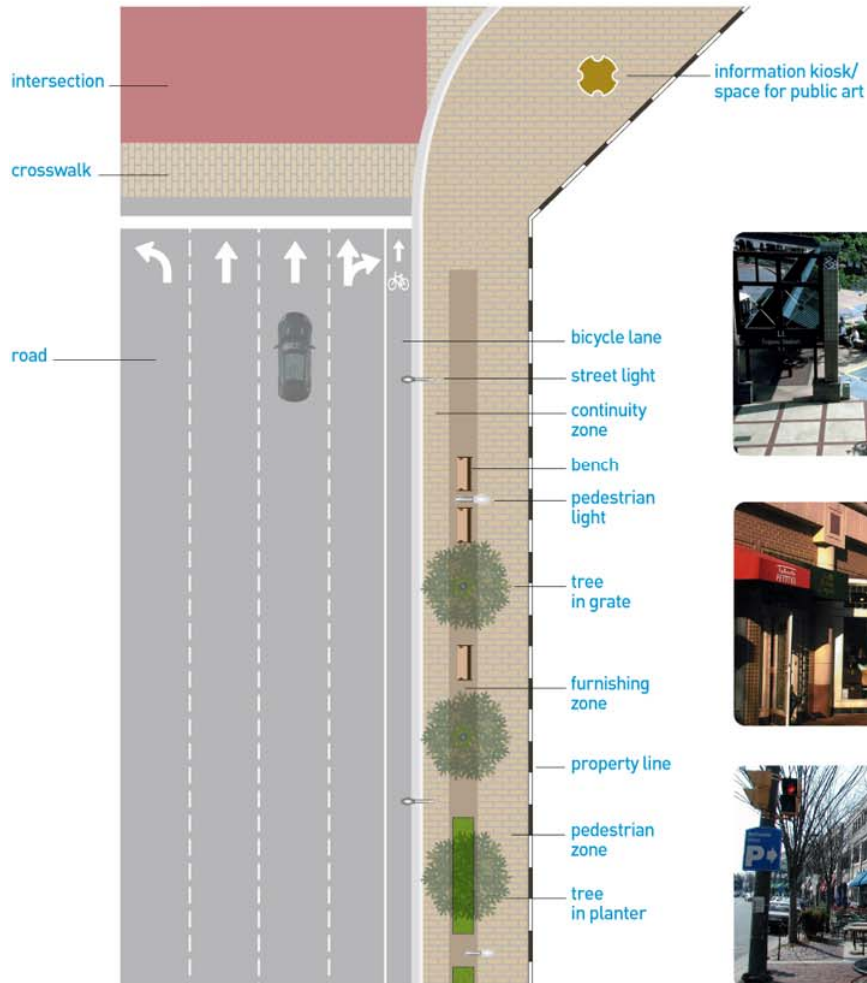
Intersection lighting



Tree planting



› Sidewalk at typical vivastation intersection



new vivastations will provide greater comfort and convenience

VIVANEXT

roof extends up and over Viva vehicles to keep snow and rain off while embarking/disembarking

roof and side panels made of reflective tinted glass for greater visibility and comfort

extended platform length can accommodate multiple Viva vehicles, enhancing embarking/disembarking efficiency

raised platform provides level boarding of Viva vehicles, eliminating the need to climb steps or lift objects

temperature and motion activated heaters in full wind enclosure provide warmth while motion-activated entry doors minimize heat loss

arrival/departure screens provide real-time scheduling info plus up-to-the-minute time, weather, news, sports and market headlines

full-time security surveillance and intercom for emergency assistance on platform

tactile pavers along rapidway edge provide greater safety



energy-efficient lighting throughout for greater safety and comfort



gently sloping ramp provides easy wheelchair, motorized scooter and stroller access



ample seating inside and out provides greater personal space and comfort



flexible cash, pass and Presto fare machines

building a rapidway step-by-step



1. Move utilities and set up temporary traffic signals
2. Shift all lanes over to one side of roadway
3. Remove old curbs and drains
4. Install new streetlights
5. Put in new curbs, drains, sidewalks, etc.
6. Install permanent traffic signals and pave/paint new traffic lanes
7. Shift traffic to new lanes and repeat steps 1 to 6 on other side
8. Build rapidways down centre of roadway
9. Build vivastations and landscape boulevard and median along rapidways
10. Pave rapidways and intersections

Project dates:

- Conceptual design completed
- Land acquired
- PE contract awarded - design to be completed by end of 2011
- Utility work underway
- Construction scheduled to commence in 2011



- Environmental Project Report approved in 2009
- Continuing to work with senior levels of government to secure funding





see
what's next
for viva.

Yonge Street | Davis Drive | Green Lane Public Consultation

Please join our upcoming Invt Public Consultation:

Wednesday, June 11, 2008, from 4-8pm
Regional Administrative Centre
17250 Yonge Street, Newmarket, Ontario



Thursday, June 19, 2008, from 5-8pm
Oak Ridges Recreation Centre, North Taylor Room
70 Old Colony, Richmond Hill, Ontario

The next generation of Viva will put the rapid into rapid transit. VivaNext takes our vehicles out of mixed traffic and puts them on dedicated rapidways along segments of Yonge Street, Davis Drive, Green Lane and Highway 7. VivaNext also includes two new subway extensions into York Region.

www.york.com

VIVAnext

VIVA VIVA VIVAnext news | updates | information

fall 2007

Breaking ground for rapidways

“Creating attractive boulevards will help facilitate intensification and mixed-use development, creating more attractive places to work and do business.”
—Andrew Stewart, VP, Campaigns

Metroline is committed to working with York Region to break ground on the rapidways this year. “Progress is going very well indeed,” said Metroline President and CEO Robert Prichard at the July public board meeting. “We want to break ground this fall and we are working hard to do so.” Those in attendance at the meeting were also excited to get a glimpse into the future by viewing the community transformation images, available at vivanext.com. Preparations were made over the summer so construction work can begin this fall near Enterprise Dr. and Warden Ave. in Markham. In Newmarket, utility relocation design has commenced and preliminary engineering work continues.

The benefits of the VivaNext plan are many. Rapidways will take Viva vehicles out of mixed traffic and enable them to operate faster by avoiding congestion. Faster, more reliable rapid transit service means greater convenience. Construction of the rapidways will also help stimulate the creation of transit-friendly communities where people can live, work and play. As the rapidway projects are about to get underway we encourage you to add vivanext.com to your list of favourite websites for quick and easy access to the latest information and construction updates.

vivanext.com

your opinion counts.

public meeting
• yonge subway extension
• highway 7 rapidway

Yonge Subway Extension Transit Project Assessment Process Completed

A Statement of Completion was filed today with the Ontario Ministry of the Environment regarding the proposed Yonge subway extension, becoming the first project in Ontario to be evaluated using the streamlined, transit-specific environmental assessment process called the Transit Project Assessment Process.

Earlier this month, Ontario Minister of the Environment John Gørnertson approved the Environmental Project Report for the extension of the Yonge subway.

“The Yonge subway extension is a major step closer to reality,” said York Region Chairman and CEO Bill Fisch. “This project now stands ready for Provincial and Federal funding consideration which will vastly improve public transit.”

Visit vivanext.com for more information.

Join the online conversation at vivanext.com/blog or follow us on twitter.

VIVAnext

-  www.vivanext.com
-  [Blog](#)
-  [Twitter](#)
-  [Newsletter](#)
-  [Media](#)
-  [Onsite](#)

Property surveys for speedways underway

On Xingye Street from
Highway 7 to Tishu Avenue

vivanext

Setting the stage for southeast speedways preliminary engineering work

The design of speedways for Xue on Xingye Street in Shenzhen 11 is now in the preliminary engineering phase. During this phase, land requirements are assessed. This requires the preparation of land use maps in order to determine property boundaries and involves the installation of our survey markers to accredited fixtures and for reports.

There should be little or no impact on you as this work is done. While our surveys are legally permitted to enter onto the site under private property, we will make every effort to ensure this does not inconvenience you.

As part of the preliminary engineering works, the Region's staff will be working closely with you, and other community members, to ensure that plans are kept informed. Staff will review the plans with you and advise how the project will unfold in the coming months.

You are welcome to contact us directly with any questions or concerns you might have. Your Community Liaison, and our ability, can be reached at:

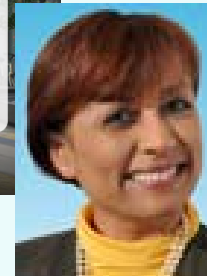
Office: 100 000 2107 Ext. 502
Toll-free: 1 877 556 5675
Mobile: 416 554 5815
Email: info@viva.ca

VivaNext System Map

The map displays the VivaNext system with various transit lines and stations. The legend indicates the following transit modes:

- Metro (Blue circle)
- Light Rail (Orange circle)
- Rapid Transit (Green circle)
- Bus Rapid Transit (Yellow circle)

The map shows the locations of various stations, including Union Station, Bayview Station, Finch Station, and others. A small inset photo shows two people, a man and a woman, smiling and looking at a device.



- Nimisha Raja is your Community Liaison
- Construction/ Community Office to be located in the area
- Sign-up for e-updates

