

# Rouge Park



## Rouge Park Update

Presentation to Development Services  
Committee May 3, 2011





# Rouge Park

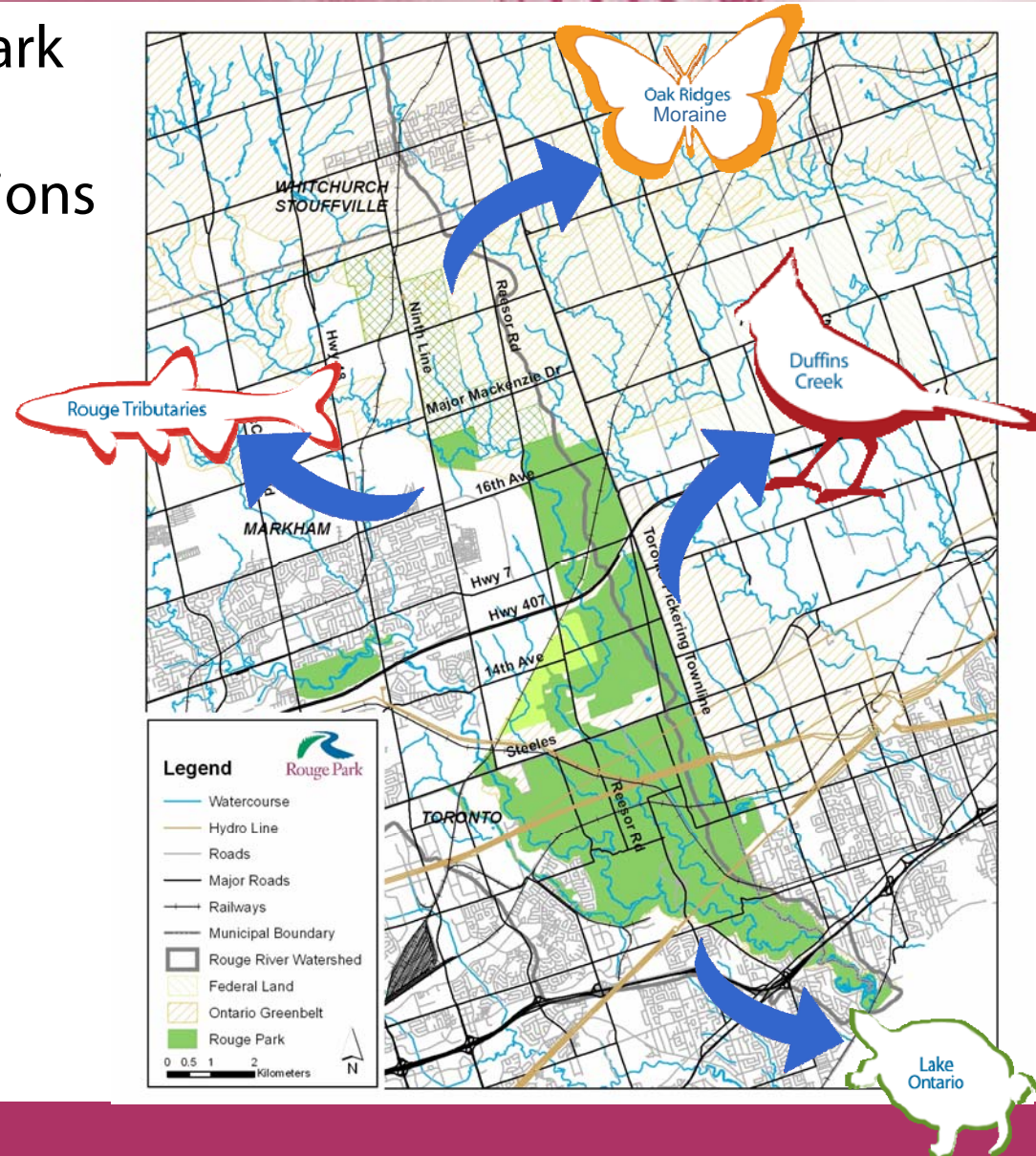
## Rouge Park is...

- A major regional park protecting wetland, riparian, meadow and forest habitat, while offering exciting stewardship and visitor experiences.
- An important natural, cultural and agricultural landscape in the Rouge River, Petticoat Creek and Duffins Creek watersheds.
- The largest natural environment park in an urban area in North America, (over 40 km<sup>2</sup>) and growing.
- A major reservoir of biodiversity in Ontario's Greenbelt .
- A singular example of federal, provincial and local cooperation in protecting, enhancing and restoring important greenspace.



# Rouge Park

Rouge Park  
is About  
Connections





# Rouge Park

## Rouge Park: Strong Partnership Support

### Rouge Park Organisational Structure



# Rouge Park



## Exciting Things Are Underway!

Bob Hunter Memorial Park

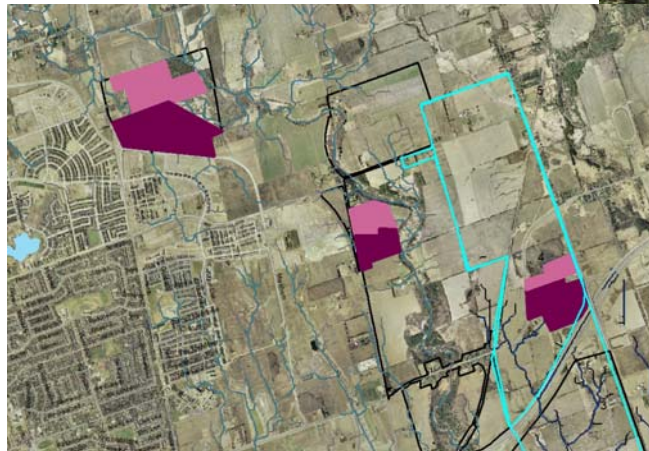
Exploring options for visitor use areas

Fun Stewardship activities

Rouge Days

Trails Master Plan

Rouge North Consolidated Plan





# Rouge Park

## Rouge Park in Markham

- Little Rouge Corridor
- Stewardship events
- Natural Heritage Restoration
- Multi-use path in Bob Hunter Memorial Park



## **Rouge Park's Vision and Goal**

### Rouge Park Vision

Rouge Park will be a special place of outstanding natural features and diverse cultural heritage in an urban-rural setting, protected and flourishing as an ecosystem in perpetuity. Human activities will exist in harmony with the natural values of the park. The park will be a sanctuary for nature and the human spirit.

### Rouge Park Goal

To protect, restore and enhance the natural, scenic and cultural values of the park in an ecosystem context, and to promote public responsibility, understanding, appreciation and enjoyment of this heritage.

# Rouge Park

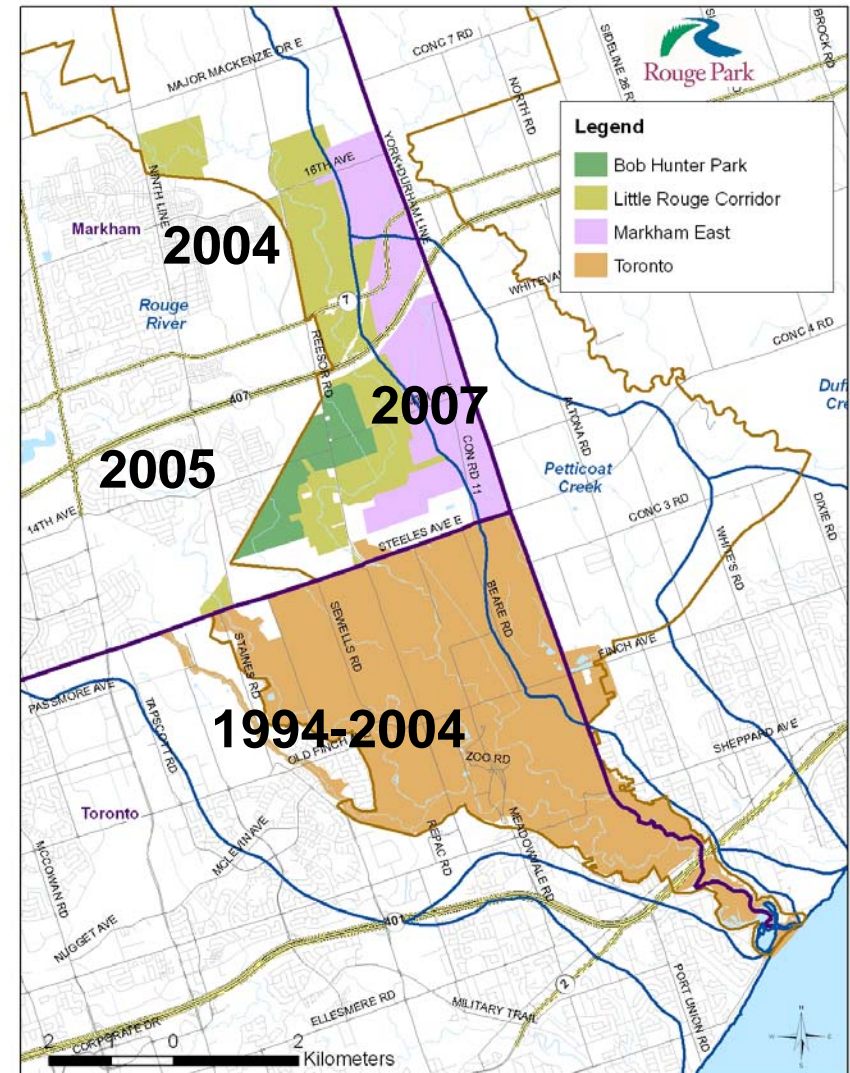
## Rouge Park *Management areas*

**1558 ha (3850 ac) in Markham**

- Little Rouge Corridor, 2004
- Bob Hunter Memorial Park, 2005
- Markham East Lands - 2007

**2383 ha (5889 ac) in Toronto**

**Total 3941 ha (9739 ac)**







## Planning history

**1994** – Rouge Park Management Plan

**2001** - Rouge North Management Plan

**2007** - Little Rouge Corridor Management Plan

**2007** - Bob Hunter Memorial Park Master Plan

**2008** – Rouge Park Action Plan

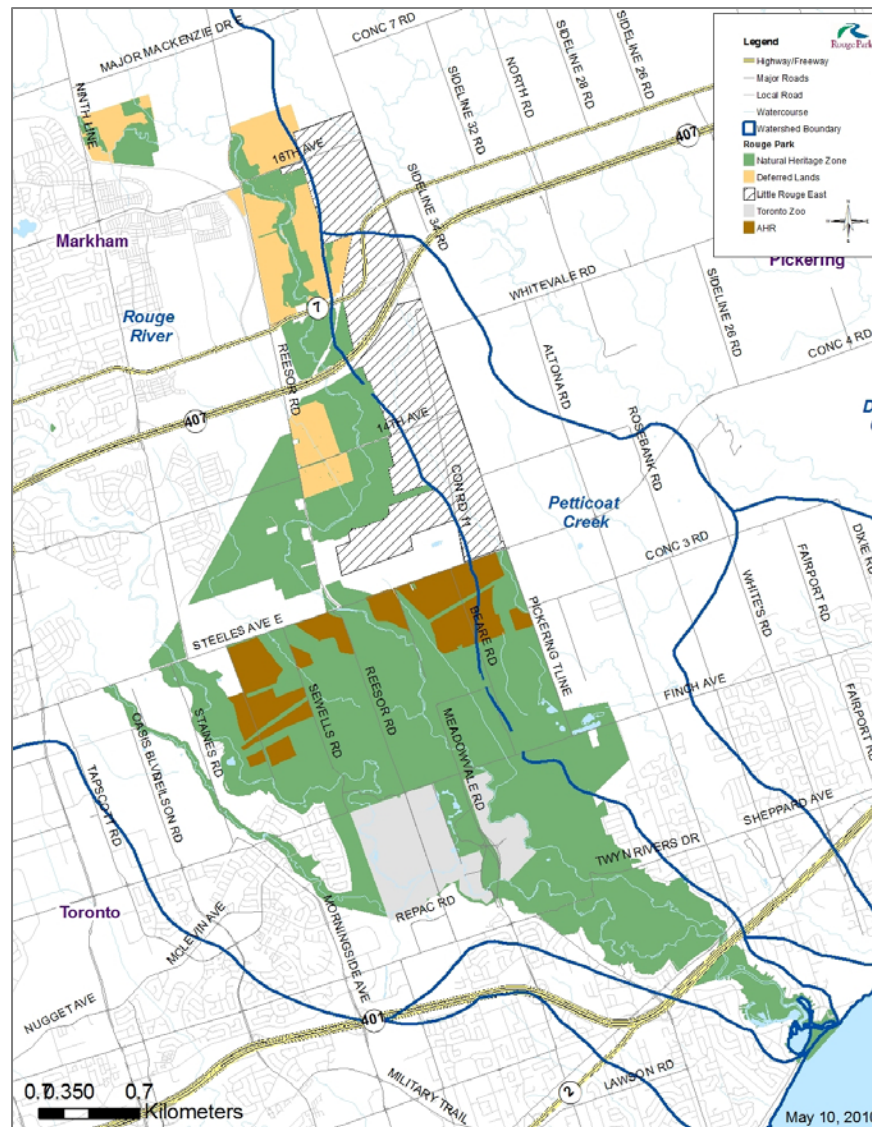
**2010** – Draft background and strategies – Markham East Lands

*To be incorporated into future Consolidated Plan*

*– Rouge Park Trails Master Plan (underway)*

**2010 - 2011** Revisit and consolidate plans for all RP lands in Markham: LRC, BHMP and Markham East Lands

# Rouge Park





# Rouge Park

## Proposed Rouge Park North Consolidated Plan





## Plan Objectives

- Conserve and restore natural heritage
- Conserve cultural heritage
- Practice innovative planning and management
- Provide for public involvement in Park planning and management
- Promote knowledge of natural and cultural values of the Park
- Provide passive recreational opportunities for people
- **Protect agriculture as a land use that is consistent with all other Park objectives.**





## **Specific goals of the Rouge Park North Consolidated Plan**

### **Complete a management plan for Rouge Park lands in Markham that will:**

- Build upon the vision, goals and strategies outlined in previous management plans and partner documents.
- Consolidate plans for the LRC (2007), BHMP (2007) and draft strategies prepared for the Markham East Lands.
- Update plans to incorporate new information and Rouge Park Alliance direction.
- Incorporate results of consultations with partners, stakeholders and the public.
- Highlight features to be incorporated into future interpretive programs and recommend ways to incorporate existing built heritage structures into park functions.



## **Specific goals of the Rouge Park North Consolidated Plan**

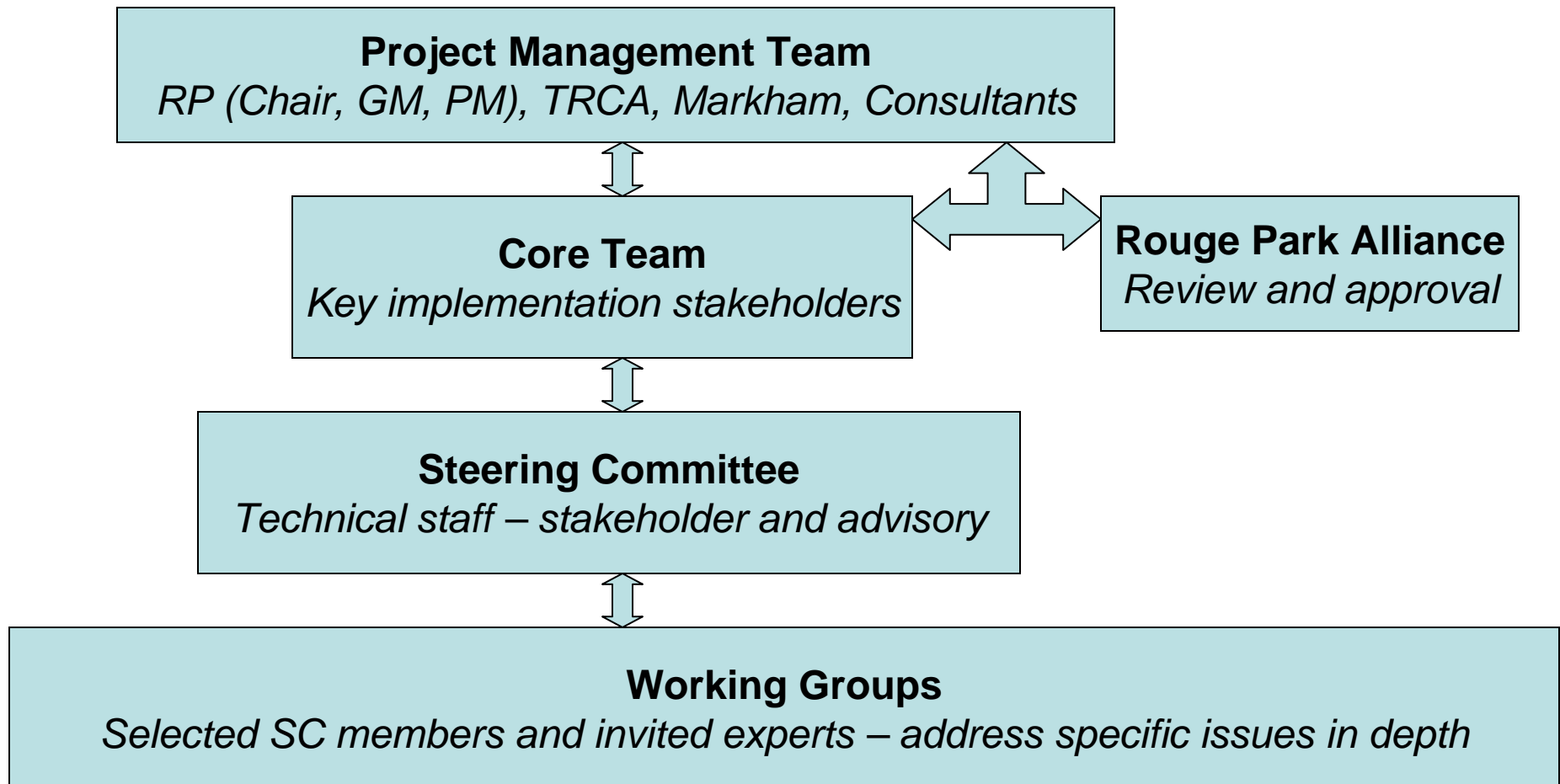
continued

- Recommend measures needed to sustain viable agriculture in areas designated for farming.
- Recommend strategies to establish the targeted natural heritage system, incorporate quality visitor experiences and maintain agriculture in designated areas.
- Recommend strategies to avoid or minimize damage from infrastructure and future growth, and to ensure that a positive net environmental benefit can be achieved from all infrastructure development in and around Rouge Park.
- Address requests from Markham's RPITF report that have been agreed to by the RPA, including consideration of dog-off leash areas and large visitor use areas.





## Study Administration





## Study Components:

- Phase 1 (Background Review)  
**Background Summary Report**  
Core and Steering Committee meetings
- Phase 2 (Development of Strategies)  
**Draft Strategies and Mapping**  
Core and Steering Committee meetings  
Working Group meetings  
Public meetings and presentation to Markham Council
- Phase 3 (Management Plan)  
**Final Management Plan**  
Core and Steering Committee meetings  
Working Group meetings  
Public meetings and community group meetings  
Rouge Park Alliance presentation
- 8 – 10 months





## **Consultant Selection**

### **Selection Committee:**

Rouge Park, TRCA and Markham

### **Process**

- RFP sent to 5 prequalified consulting firms (July 22<sup>nd</sup>, 2010).
- 2 proposals submitted and reviewed by Selection Committee
- Consultants invited to interviews
  - Initial interview (presentations and questions from SC)
  - Second interview with agricultural specialists

## **Budget and required funding**

**Total cost: approximately \$150,000**

**Request from Town of Markham:  
\$50,000**

**Additional request from York Region  
\$25,000**

### **Rationale:**

- Study area is located entirely in the Town of Markham.
- Considerable effort will be dedicated to addressing requests from Markham, including recommendations in the RPITF report.
- Markham staff are involved in the Selection Committee, Project Management Team, Core Team and Steering Committee.



A pink monarch butterfly is positioned in the upper right corner of the slide, partially overlapping the pink header bar. It is facing left, with its wings spread, showing a pattern of white spots and veins on a pink background.

# Rouge Park

The background of the slide is a photograph of a dirt path winding through a forest. The path is covered in fallen leaves and leads into the distance. On the left, there are large, thick tree trunks. The foliage is dense with green and some autumn-colored leaves. Sunlight filters through the trees, creating dappled light on the path.

## Rouge Park Trail Master Plan





## Rouge Park Trail Master Plan: Introduction

- A multi-stakeholder committee was created in fall 2009, consisting of partner organizations and trail experts.

Alan Wells, Chair	Mike Bender, Toronto Region Conservation	
Michelle Holmes, Rouge Park	Diana Smyth, Rouge Park	Maria Papoulias, Rouge Park
Lilli Duoba, Town of Markham	Ruth Rendon, Town of Markham	Linda Irvine, Town of Markham
Nancy Lowes, Toronto Parks	Tom Boudreault, Toronto Parks	Scott Laver, Toronto Forestry
Ron Allen, Ministry of Natural Resources	Sandra McEleney, Durham Region	Brian Buckles -Trails Advocate
Dr. Bill Rapley, Toronto zoo	Lynne Timmy, Transport Canada	Sandra Malcic, York Region





## Trail Master Plan Consultation

- Terms of reference were developed outlining the task for a consultant
  - Create a north-south connection through the park
  - Connect Rouge Park trails to neighbouring trail systems
  - The trail system will offer rewarding visitor experiences while protecting important natural habitats, and agricultural landscapes
  - The trail system will provide safe exploration of the Park
- Schollen Inc. was hired to do the work, with support from North-South Environmental and Lura Consulting