

**Park Pavilion and Maintenance Building
at
Berczy Park**

Site Plan Approval Update
Development Services Committee
May 10, 2011



BERCZY PARK

Berczy Park North

Berczy Park South



BUILDING LOCATION: PARK PAVILION



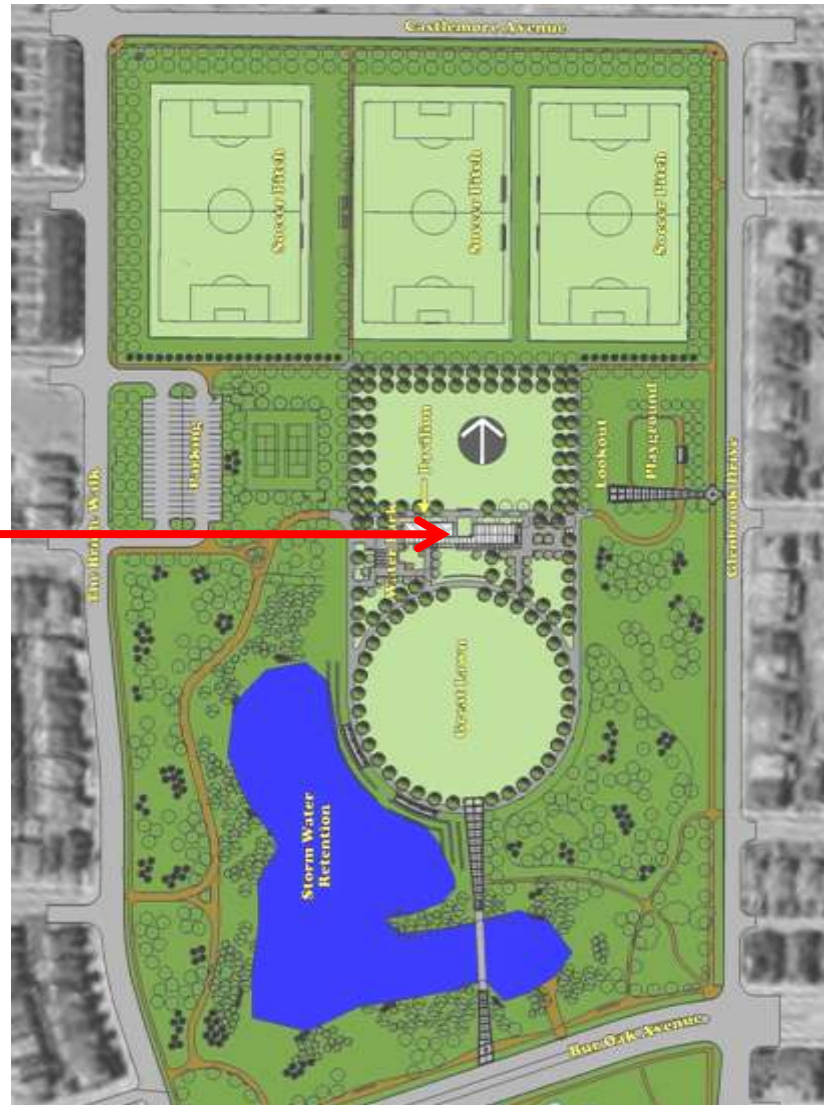
Pavilion

Maintenance Building

PARK PAVILION BUILDING

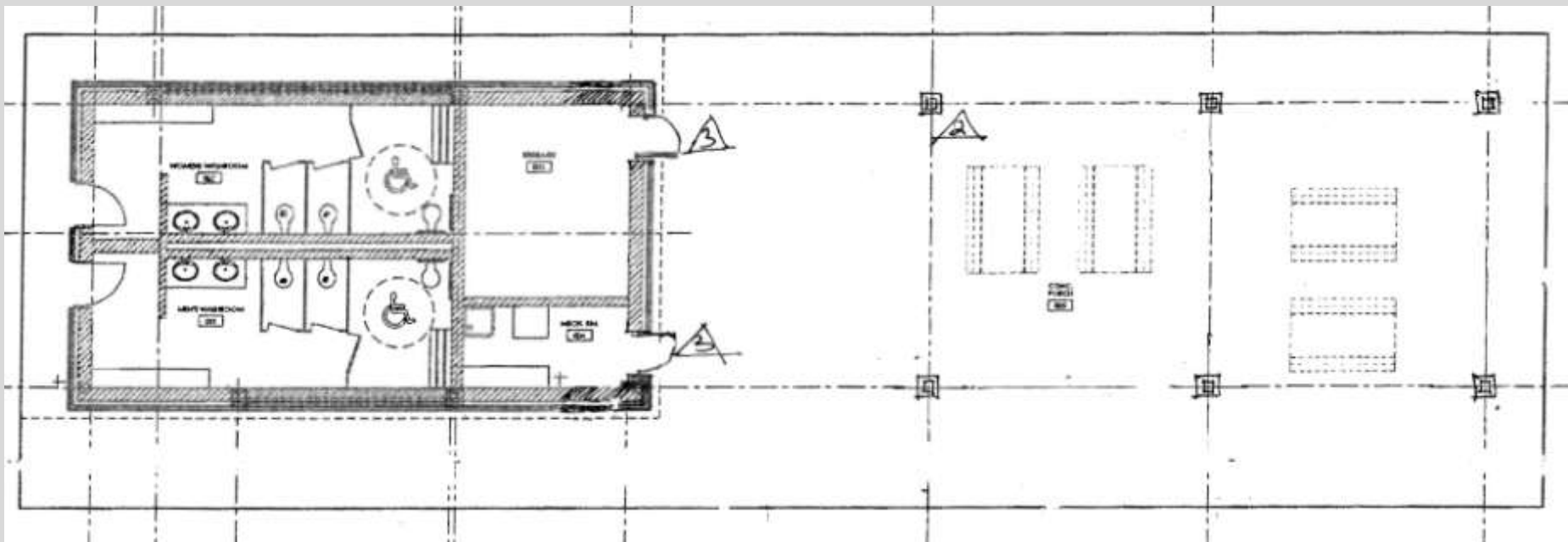
PAVILION SITE PLAN

Pavilion



PARK PAVILION DESIGN PRINCIPLES

- Classical design
- Simple form and Materials
- Context Sensitive: Form and Function
- Durable and Low Maintenance Materials
- Seasonal Building
- Facility to serve primarily as a washroom, change room and outdoor gathering area for sports groups and general park users



Pavilion Floor Plan

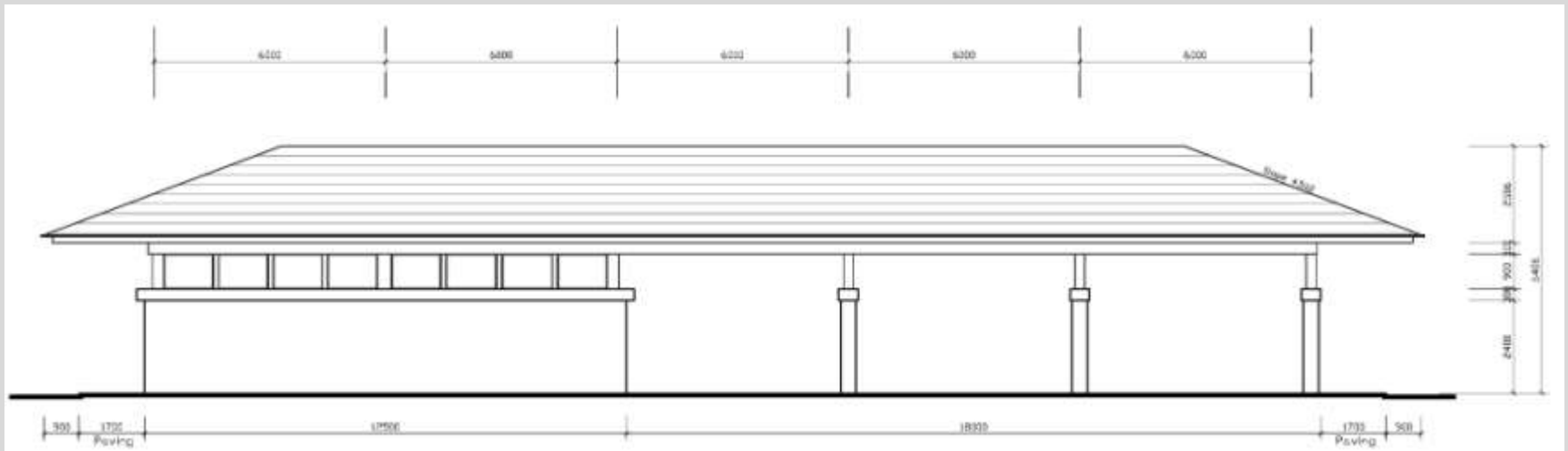
Program

- 2 Public Washrooms with Change Area....635 sq.ft.
- Storage Room.....180 sq.ft.
- Service Room.....130 sq.ft.
- Outdoor Picnic Area.....1900 sq.ft.
- Drinking Fountain.....1 pc.

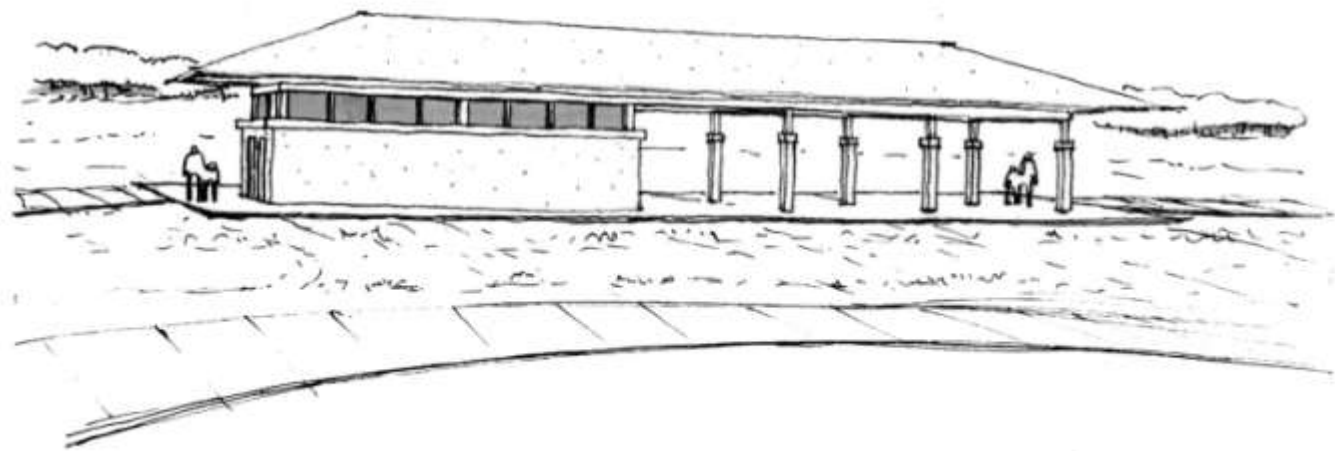
Total Area : 2845 sq.ft.

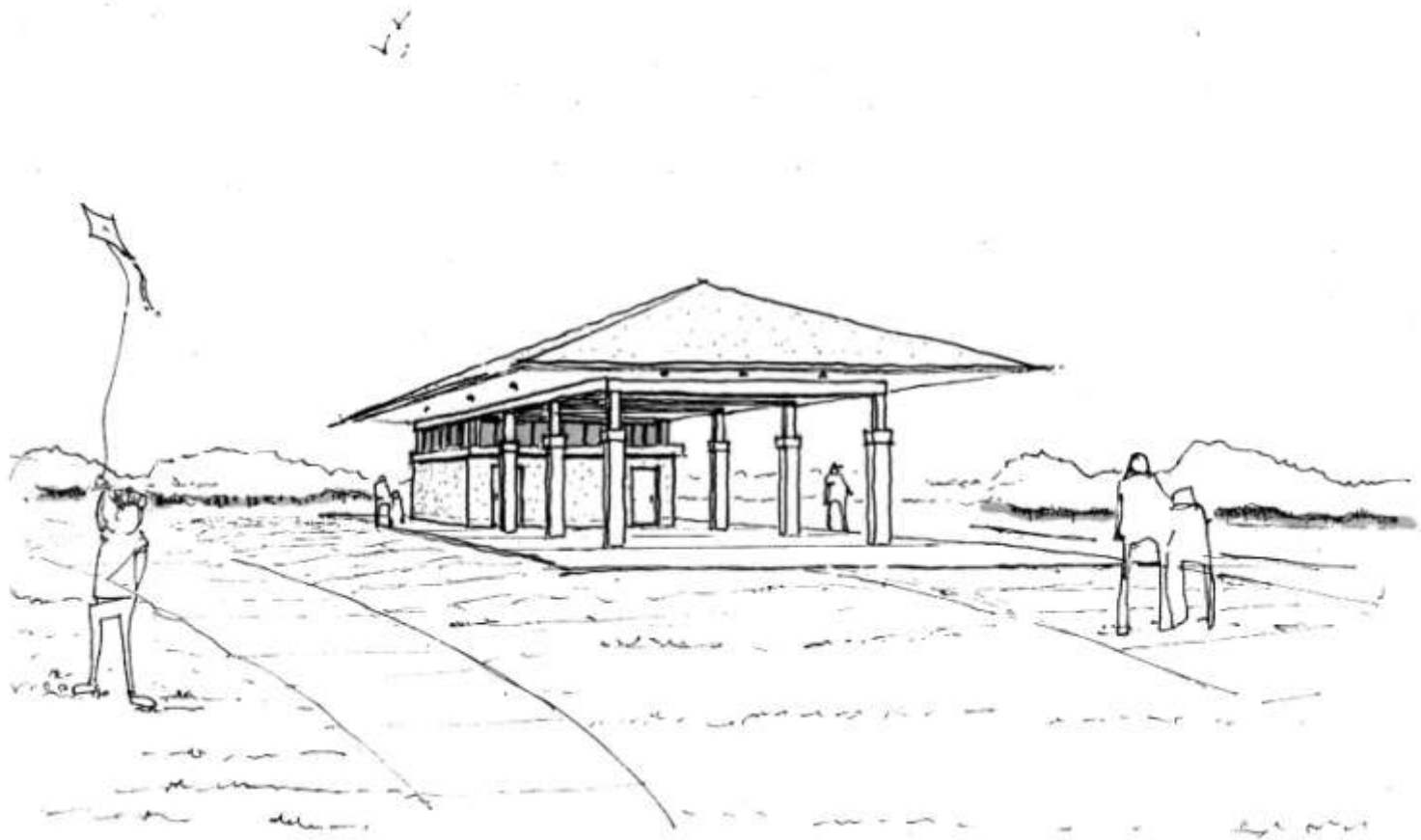


Pavilion Side Elevation



Pavilion Front Elevation





MATERIALS

Break Down of Materials				
	Exterior		Interior	
	Foundation	Cast-in-Place Concrete	Interior Walls	Architectural Block, Concrete Block (Painted)
	Floor	Concrete	Floor	Sealed Concrete/Terazzo
	Exterior Walls	Precast Stone and Architectural Block	Doors	Hollow Metal (Painted)
	Roof	Wood Truss, Built-up Roofing Membrane, Asphalt Shingle or Metal	Ceiling	Cedar Plank
	Windows	Aluminum Frame/Double Glazed		
	Doors	Hollow Metal (Painted)		
	Other	Park Furniture, Exterior Lighting		

BUILDING LOCATION: MAINTENANCE BUILDING



Pavilion

Maintenance Building

Maintenance Building

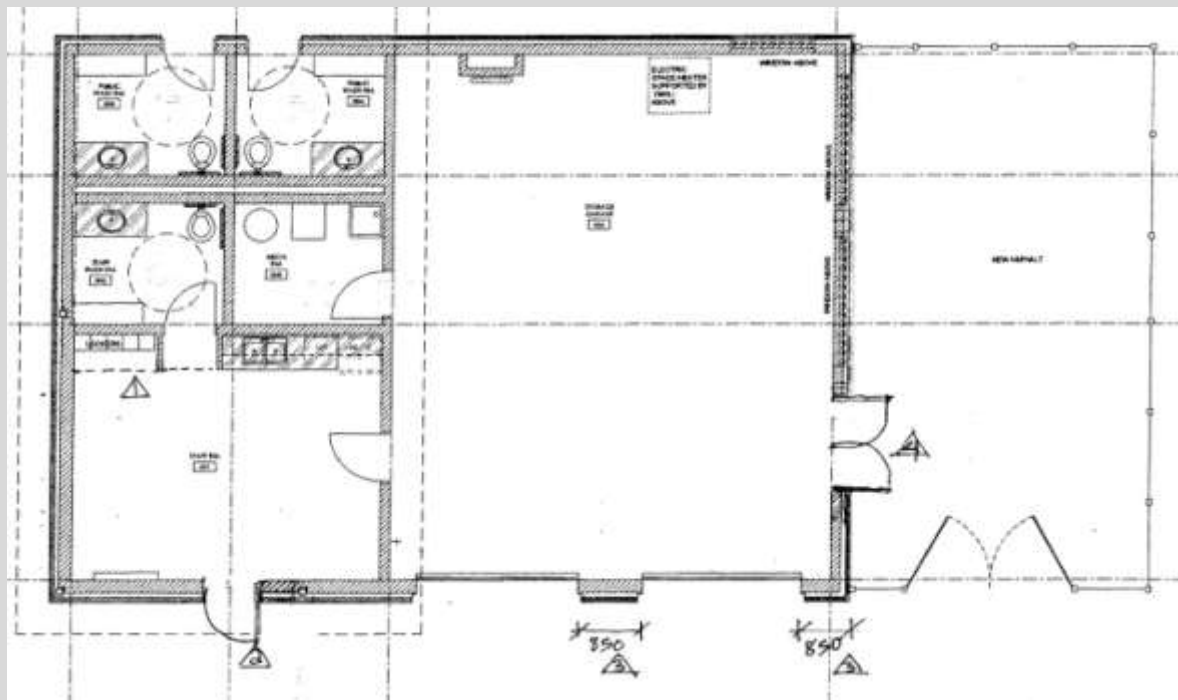
MAINTENANCE BUILDING SITE PLAN



Maintenance Building

MAINTENANCE BUILDING DESIGN PRINCIPLES

- Classical design
- Simple form and Materials
- Context Sensitive: Form and Function
- Durable and Low Maintenance Materials
- All Season Satellite Maintenance Facility
- Includes Public Washrooms
- Similar Architectural Vocabulary to Park Pavilion



Maintenance Building Floor Plan

Program

•Staff Room.....	360 sq.ft.	Total Area : 1735 sq.ft.
•1 Staff Washroom.....	90 sq.ft.	
•2 Vehicle Bays & Equipment Storage....	1015 sq.ft	
•2 Public Washrooms.....	180 sq.ft.	
•1 Mechanical/Storage Room.....	90 sq.ft	
•Exterior Storage/Yard.....	2000 sq.ft.	
•Staff Parking.....	4	
•Drinking Fountain.....	1 pc.	



Elevation Facing Creek



Park and Street Front Elevations

Materials

Break Down of Materials				
	Exterior		Interior	
	Foundation	Cast-in-Place Concrete	Interior Walls	Architectural Block, Concrete Block (Painted)
	Floor	Concrete	Floor	Sealed Concrete/Terazzo
	Exterior Walls	Precast Stone, Architectural Block	Doors	Hollow Metal (Painted)
	Roof	Wood Truss, Built-up Roofing Membrane, Asphalt Shingle or Metal	Ceiling	Cedar Plank Flat Ceiling / Exposed Truss in Maintenance Area.
	Windows	Aluminum Frame/Double Glazed	Other	Millwork for Kitchenette & Washrooms
	Doors	Hollow Metal (Painted)		
	Other	Maintenance Enclosure, Asphalt Paving, Exterior Lighting and Parking		

[illegible]

Next Steps

- The Park Pavilion and Maintenance Building at Berczy Park presentation be received;
- Staff to report back to Development Services Committee on site plan application.