



BUILDING MARKHAM'S  
FUTURE TOGETHER



# Park Renaissance Program Update

October 2, 2017

Operations Department

## Park Renaissance Strategy and Program

- The Parks Renaissance Strategy builds on the principles from Shared Places, Our Spaces – Markham's Public Realm Strategy, with a focus on the needs of older parks in the City.
- The Park Renaissance program implements improvements to existing parks through light touches that represent the needs of changing neighbourhoods of Markham residents, workers and visitors

# Guiding Principles

- *Inclusive and Diverse* – Support opportunities for all demographics and encourage community engagement.
- *Connected* – Deliver projects that facilitate a connected community and City.
- *Innovative and Beautiful* – Create diverse, vibrant and memorable spaces.
- *Responsive* – Support a range of activities that respond to leisure and cultural needs and interests.
- *Sustainable* – Support the protection, enhancement and continued health of natural features and enhance stewardship and education.
- *Flexible* – Consider multi-functional spaces and future adaptability to changing needs.
- *Fiscally Responsible* – Consider long-term operational impacts as well as capital costs.

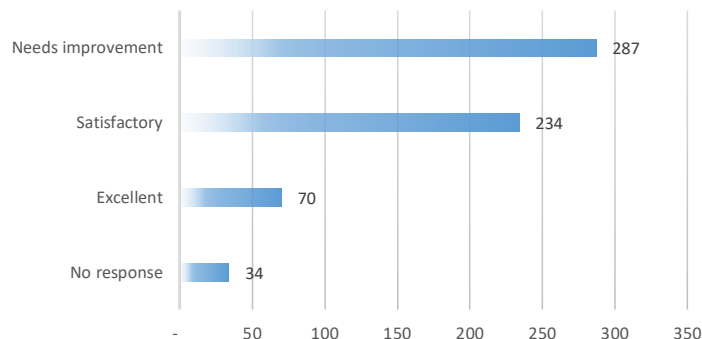
# Engagement Strategy and Analysis

- Consultation with Ward Councillors
- Internal Staff Consultation – Parks Operations, Parks and Open Space Development, Corporate Communications and Community Engagement and Recreation Services
- Public Survey – collect feedback from the public
  - Made available from March to July 2017, on the City website, at the Contact Centre, and Libraries
  - Promoted through the City website, social media and at festivals
- Park Evaluations – Staff assessed all parks ten years and older as part of the process for determining the type and location of projects

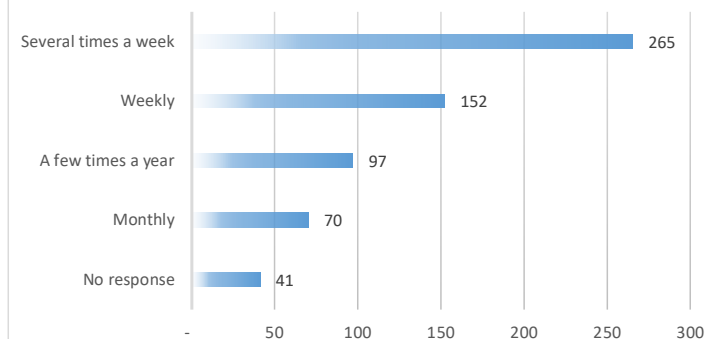


# Survey Results

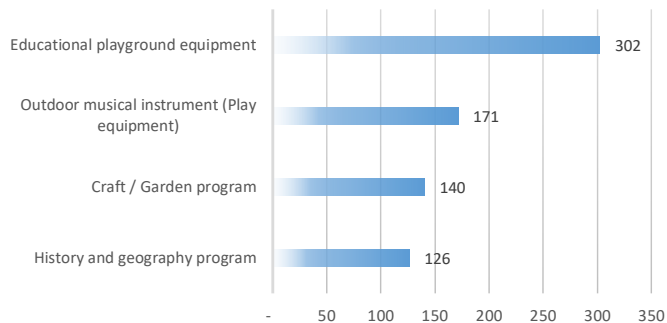
## CONDITION OF PARKS



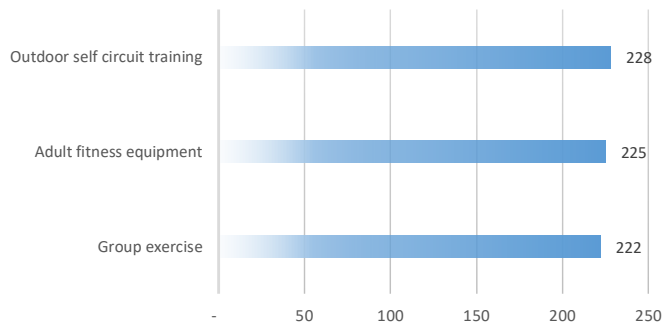
## TIME OF VISIT



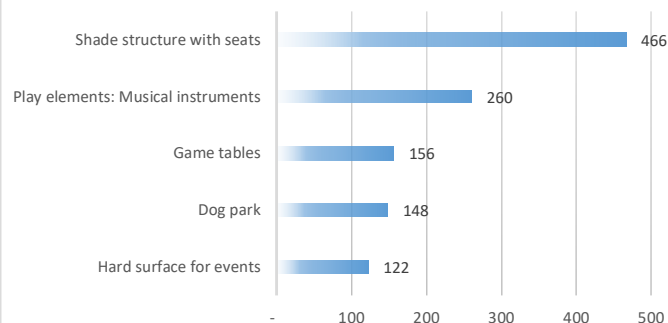
## EDUCATIONAL ELEMENTS



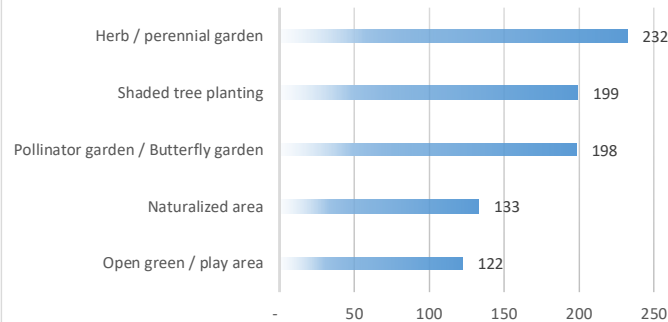
## FITNESS ELEMENTS



## ENTERTAINMENT ELEMENTS

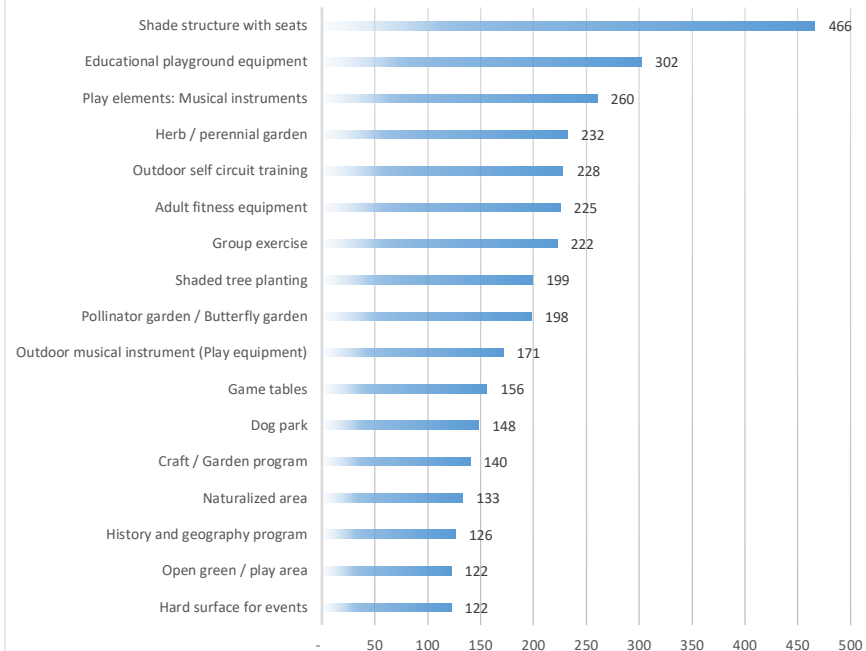


## ENVIRONMENTAL ELEMENTS





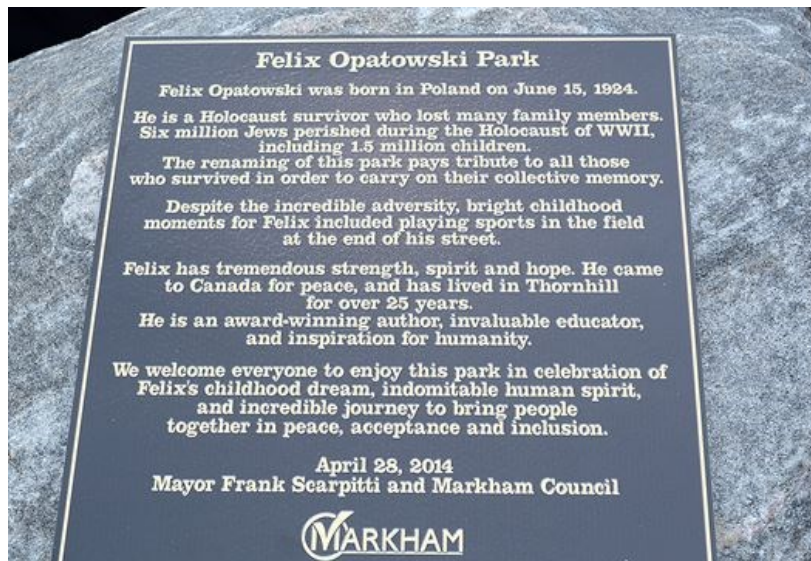
### ALL ELEMENTS



# Project Implementation

## Felix Opatowski Park

Creation of Felix Opatowski Park. The transformation of a small area of green space associated with the hydro corridor into a simple seating area with plantings, provides a gathering place for the community.





## William Robb Park

Installation of educational play boards. The placement of the play boards adjacent to benches and the play area allow small children a place to play, close by their caregivers, while providing children with difficulty walking in sand an activity on a hard surface.



## John Stegman Woods Park

Installation of two games tables, and the relocation of existing park furniture to make the games tables accessible for wheelchairs and strollers.



## Aston Meadows Shade Structure

Installation of a shade structure to provide shelter to a variety of users including those who use the park for exercise, visitors of the sports fields, and visitors of the 100 Tree Memorial. Shade structures provide visitors with reprieve from the sun and rain, and also provide a gathering place within the park, extending the daily and seasonal usage of the park.



## Adult Exercise Circuits in Parks Across the City

Installation of adult exercise equipment in eight parks across the City. Pieces of exercise equipment are arranged along a path, spaced through the park, creating an exercise circuit. Park users can integrate the use of the exercise equipment into their other activities at the park.





# Future Improvements Planning

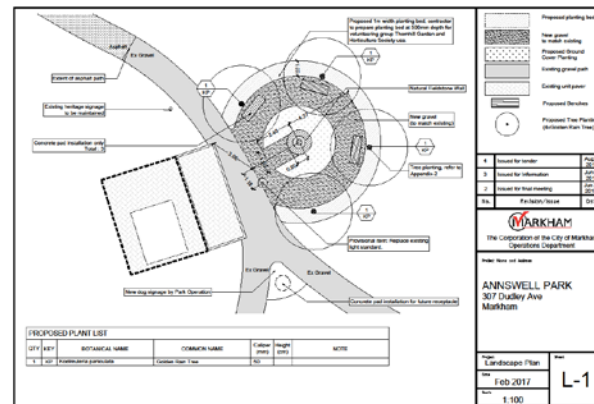
## Exercise Signage Circuits

Install exercise signage in parks with suitable pathways, creating full body workouts with signed exercises. The signage component will be added as additional exercises to the equipment circuits and as a stand alone circuit depending on location



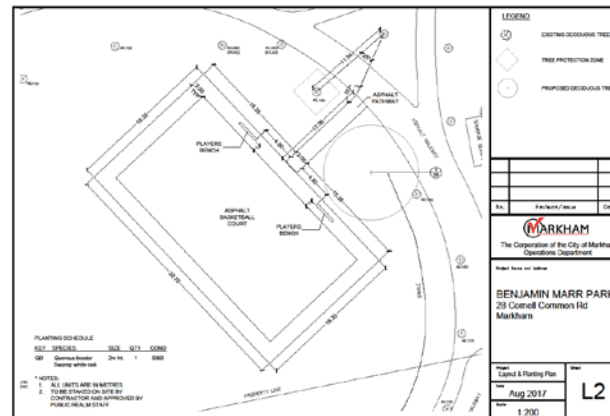
## Reconfigure Annswell Park

Annswell Park is a small historic park in Thornhill commemorating Holy Ann's well. The park is named after Holy Ann Preston, whose well and prayer shed is replicated in the park. The reconfiguration will connect these features and better integrate them into the park.



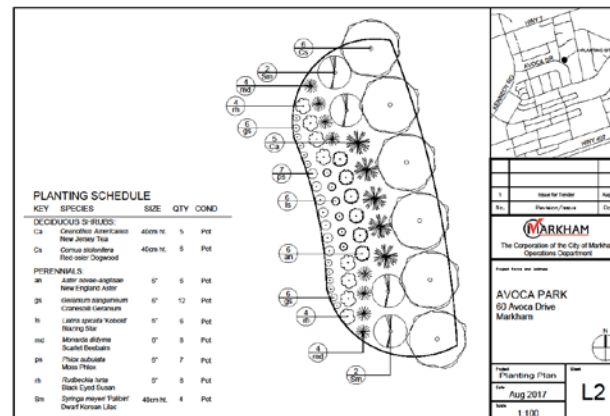
## Basket Ball Court in Benjamin Marr Park

Addressing the needs of youth, providing a gathering space around active engagement a full size basket ball court will be installed



## Pollinator Gardens

Pollinator gardens will be planted in several locations throughout the City. Illustrating to residents that pollinator gardens are not only sustainable for the environment but can also be beautiful additions to the City.



Thank You