

PLAN 65R-

RECEIVED AND DEPOSITED

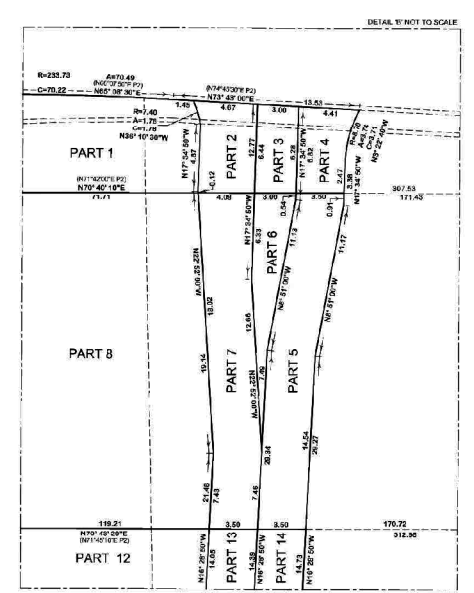
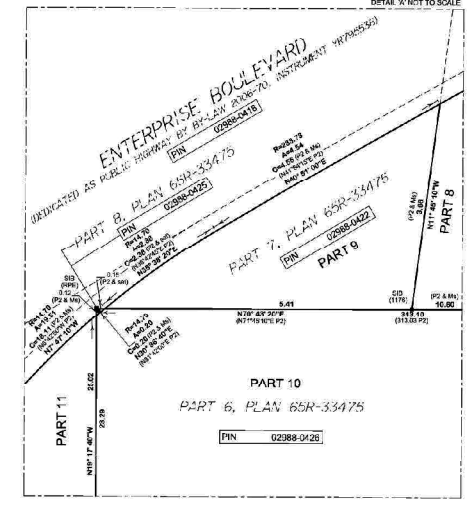
DATE _____

DATE _____

METRIC

REGISTRAR FOR THE LAND TITLES DIVISION OF YORK (NO. 8)

SCHEDULE			
PART	LOT	CONCESSION	AREA
1			373.26 ²
2		ALL OF PIN 02988-0870	27.30 ²
3			19.14 ²
4			22.30 ²
5			93.14 ²
6		ALL OF PIN 02988-0870	27.14 ²
7			84.48 ²
8		CONCESSION 5	2843.90 ²
9		ALL OF PIN 02988-0422	10.44 ²
10		ALL OF PIN 02988-0423	100.64 ²
11			82.82 ²
12		ALL OF PIN 02988-0423	1360.36 ²
13			813.20 ²
14			837.58 ²



PLAN OF SURVEY OF
**PART OF THE EAST HALF OF LOT 8
 AND PART OF LOT 9
 CONCESSION 5**
 (GEOGRAPHIC TOWNSHIP OF MARKHAM)
 NOW IN THE
TOWN OF MARKHAM
 REGIONAL MUNICIPALITY OF YORK
 SCALE 1:500

WSP GEOMATICS ONTARIO LIMITED
 ONTARIO LAND SURVEYORS
 2018

NOTE:

TOPOGRAPHIC DETAIL INCLUDING FENCE TERMINAL BOX AND BOLLARDS WILL BE REMOVED FROM PLAN PRIOR TO DEPOSITING

NOTE

BEARINGS ARE UTM GRID (DERIVED FROM SPECIFIED CONTROL POINTS 366282077 AND 366282078 UTM ZONE 17, NAD83 ORIGINAL)

ADJUSTED CONTROL POINTS (CCP): UTM ZONE 17, NAD83 (ORIGINAL)

COORDINATES TO UTM GRID (UTM ZONE 17, NAD83)

POINT ID	NORTHING	EASTING
366282077	4870617.14	83858.84
366282078	4882671.33	83858.453

COORDINATES CANNOT, IN THEMSELVES, BE USED TO RE-ESTABLISH CORNERS OR BOUNDARIES SHOWN ON THIS PLAN.

DISTANCES ARE GIVEN AND CAN BE CONVERTED TO GRID BY MULTIPLYING BY THE COMBINED SCALE FACTOR OF 0.999995.

LEGEND

11	CONCRETE	FOUND
12	CONCRETE	PLANTED
13	CONCRETE	STANDARD IRON BAR
14	CONCRETE	SPLIT STANDARD IRON BAR
15	CONCRETE	IRON BAR
16	CONCRETE	PLASTIC BAR
17	CONCRETE	WSP GEOMATICS ONTARIO LIMITED
18	CONCRETE	WSP GEOMATICS ONTARIO LIMITED
19	CONCRETE	S. C. ROBERTS, O.L.S.
20	CONCRETE	D. J. BARNES LIMITED
21	CONCRETE	SADY-PATK & EDWARDS SURVEYING LTD.
22	CONCRETE	WITNESS
23	CONCRETE	PLAN 65R-001
24	CONCRETE	PLAN 65R-27018
25	CONCRETE	PLAN 65R-33475

May 23, 2018

DATE _____

DATE _____

WSP Geomatics Ontario Limited

810 Charwell Road, Suite 300, Oakville, Ontario, Canada, L6J 4A5

1-800-323-8800 F. 905-853-2652

18M-001-001

WSP Geomatics Ontario Limited

810 Charwell Road, Suite 300, Oakville, Ontario, Canada, L6J 4A5

1-800-323-8800 F. 905-853-2652

18M-001-001

18M-001-001