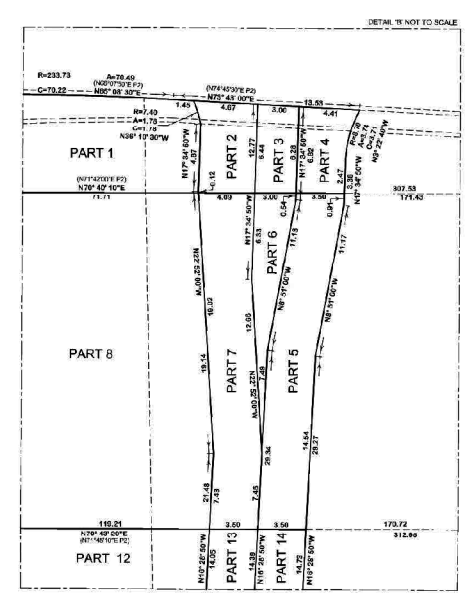
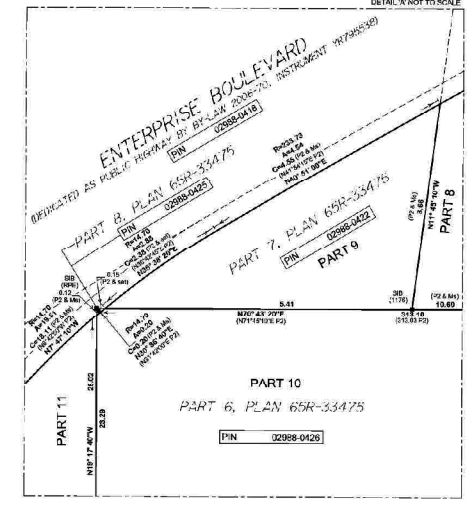


SCHEDULE		PIN	AREA
1	CONCESSION		373.26 ²
2		ALL OF PIN 02988-0870	27.26 ²
3			19.16 ²
4			79.86 ²
5			50.76 ²
6		ALL OF PIN 02988-0870	27.16 ²
7	PART OF LOT 8		84.44 ²
8	CONCESSION 5		2343.26 ²
9		ALL OF PIN 02988-0822	10.86 ²
10		ALL OF PIN 02988-0428	100.04 ²
11			83.56 ²
12		ALL OF PIN 02988-0423	15643.26 ²
13			813.26 ²
14			927.56 ²



PLAN 65R-
RECEIVED AND DEPOSITED
DATE _____
GREG MACDONALD, C.L.S.

METRIC
DISTANCES AND COORDINATED DIMENSIONS ON THIS PLAN ARE IN METRES AND CAN BE CONVERTED TO FEET BY DIVIDING BY 0.3048

REPRESENTATIVE FOR THE LAND REGISTRY FOR THE LAND TITLES DIVISION OF YORK (INC. 65)

PLAN OF SURVEY OF
PART OF THE EAST HALF OF LOT 8
AND PART OF LOT 9
CONCESSION 5
(GEOGRAPHIC TOWNSHIP OF MARKHAM)
NOW IN THE
TOWN OF MARKHAM
REGIONAL MUNICIPALITY OF YORK
SCALE 1:500

WSP GEOMATICS ONTARIO LIMITED
ONTARIO LAND SURVEYORS
2018

NOTE:
TOPOGRAPHIC DETAIL INCLUDING FENCE TERMINAL BOX AND BOLLARDS WILL BE REMOVED FROM PLAN PRIOR TO DEPOSITING

NOTE
BEARINGS ARE UTM GRID, DERIVED FROM SPECIFIED CONTROL POINTS 09293377 AND 09293375, UTM ZONE 17, NAD83 (ORIGINAL).
SPECIFIED CONTROL POINTS (CPTS) UTM ZONE 17, NAD83 (ORIGINAL).
COORDINATES TO UTM ZONE 17, NAD83 (ORIGINAL).
EASTING: 468967.139
NORTHING: 468967.139

POINT ID	NORTHING	EASTING
09293377	468967.139	63006.841
09293375	468967.139	63006.455

COORDINATES CANNOT BE USED TO RE-ESTABLISH CORNERS OR BOLLARDS SHOWN ON THIS PLAN.
DISTANCES ARE GIVEN AND CAN BE CONVERTED TO FEET BY MULTIPLYING BY THE COMBINED SCALE FACTOR OF 3.28084.

LEGEND

○	OPEN	FOUND
●	CLOSED	PLANTED
□	OPEN	STANDARD IRON BAR
■	CLOSED	SHORT STANDARD IRON BAR
○	OPEN	IRON BAR
■	CLOSED	PLASTER BAR
○	OPEN	WSP GEOMATICS ONTARIO LIMITED
■	CLOSED	WSP GEOMATICS ONTARIO LIMITED
○	OPEN	D.E. JOHNSON, C.L.S.
■	CLOSED	D.E. JOHNSON, C.L.S.
○	OPEN	WITNESS
■	CLOSED	WITNESS
○	OPEN	PLAN 65R-27018
■	CLOSED	PLAN 65R-27018

May 23, 2018
DATE
GREG MACDONALD
ONTARIO LAND SURVEYOR

WSP Geomatics Ontario Limited
Drawing Number: 18M-001-001

810 Chestnut Road, Suite 300, Oakville, Ontario, Canada, L5J 4A5
Tel: 905-822-8500 • Fax: 905-822-8503 • Website: www.wspgeo.com

Job Number: 18M-0001-00-0001
Job Name: Tab Name: AC
Drawing Name: 18M-0001-00-001C_C&D(215).DWG

ATTACHMENT NO. 2