

York Region Rapid Transit Corporation



Markham Development Services Committee Update | September 25, 2012

transformation unfolding



how the rapidway works



construction in west section



canopies



H3 – Canopies



H3 – Tree Planters



H3 – Boulevard Pavers

construction in the east section





H3 – Widening Corridor

staging options



**South Town Centre Boulevard
facing north toward Highway 7**



Cedarland Boulevard facing east from Warden Avenue

south town centre boulevard work april to september 2013



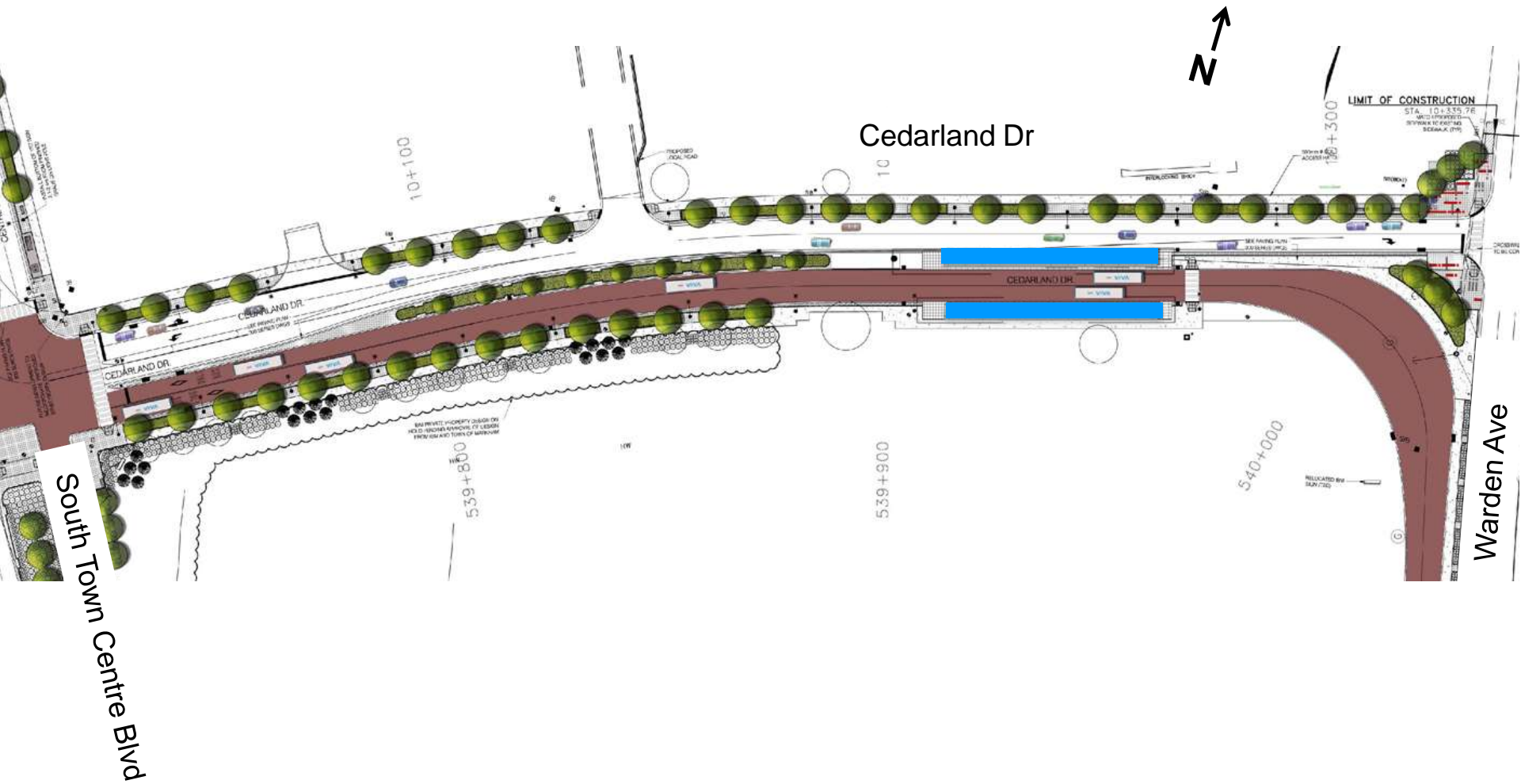
south town centre boulevard streetscape



cedarland drive work october 2012 to february 2013



cedarland drive streetscape



warden bridge work september 2012 to spring 2013



Warden Avenue facing south

warden avenue completed streetscape



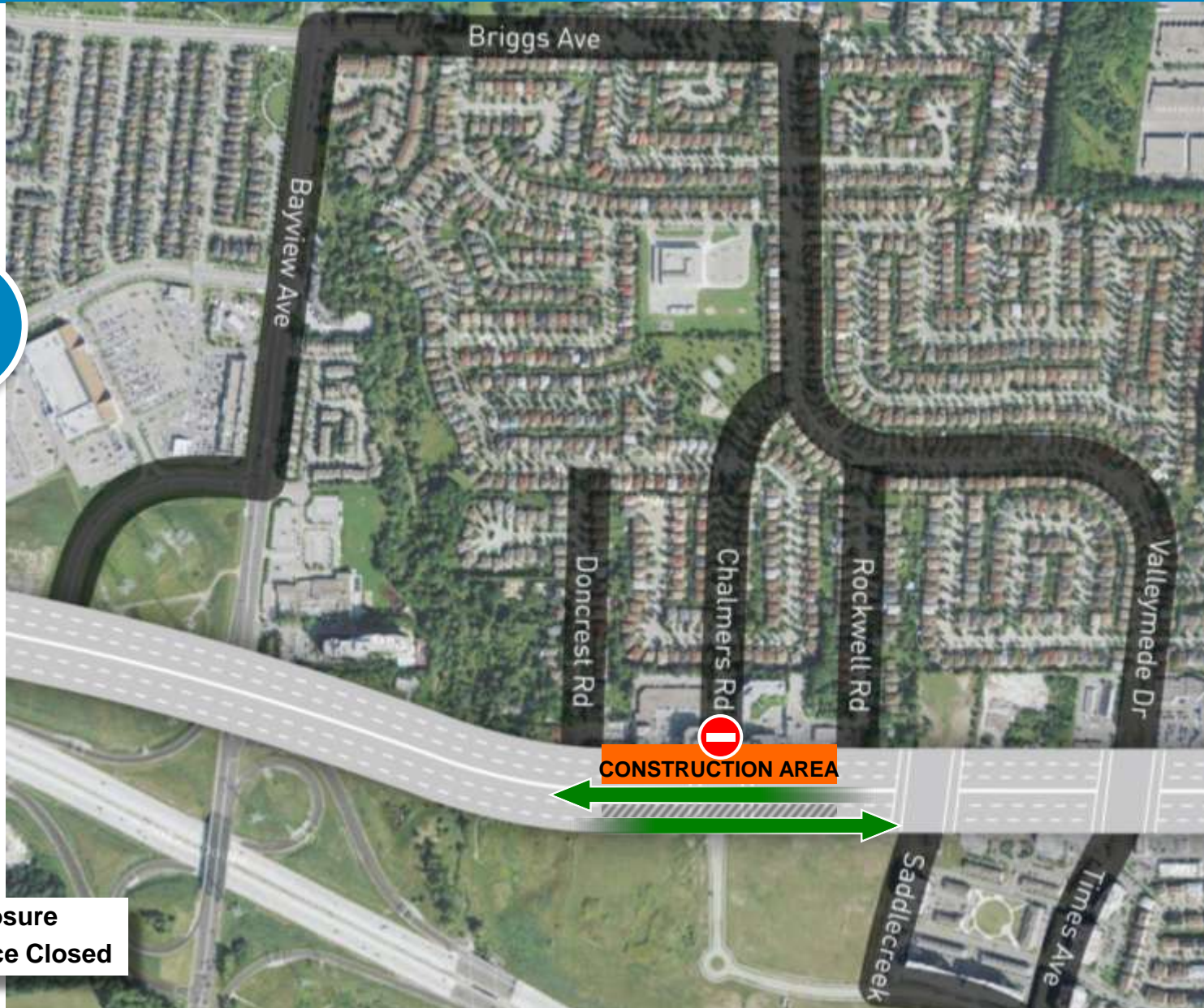
Highway 7 Paving Plan

- › Hwy. 7 – from Doncrest Rd. to East Beaver Creek Rd.
- › September 17 to mid-November (*Oct. 5-8 excluded*)
- › Multiple lane and partial intersection closures will take place on weeknights and weekends
- › Grinding and milling on weeknights
- › Base layer paving on weekends
- › North side first then the south
- › Hours of work:
 - › Monday to Thursday: 8pm to 6am
 - › Friday 8pm to Monday 6am



Doncrest to Rockwell

WEEK
1



-  Full Closure
-  Entrance Closed

Rockwell to Valleymede

WEEK
2



CONSTRUCTION AREA



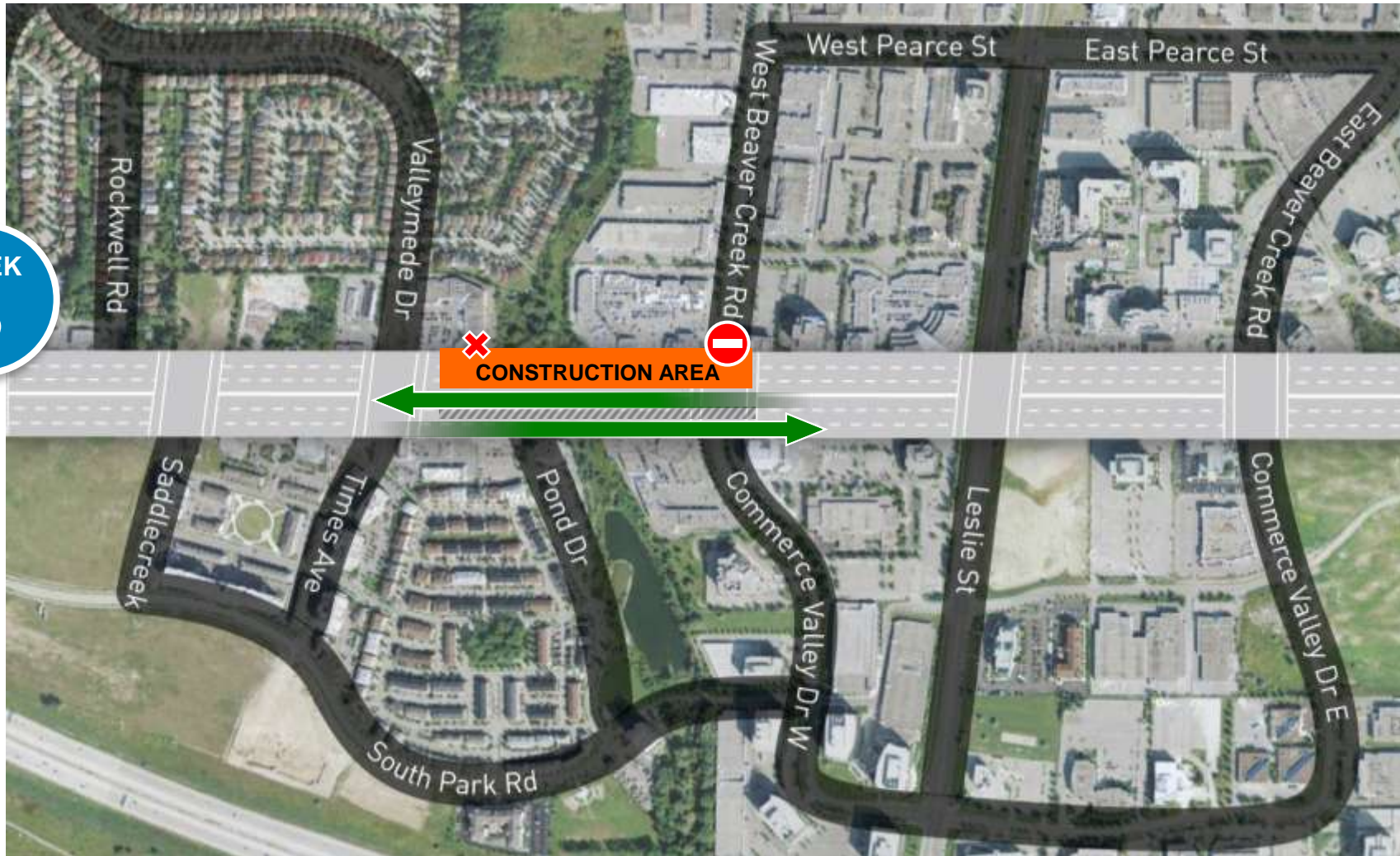
Full Closure



Entrance Closed

Valleymede to West Beaver Creek

WEEK
3



-  Full Closure
-  Entrance Closed

West Beaver Creek to East Beaver Creek

WEEK
4

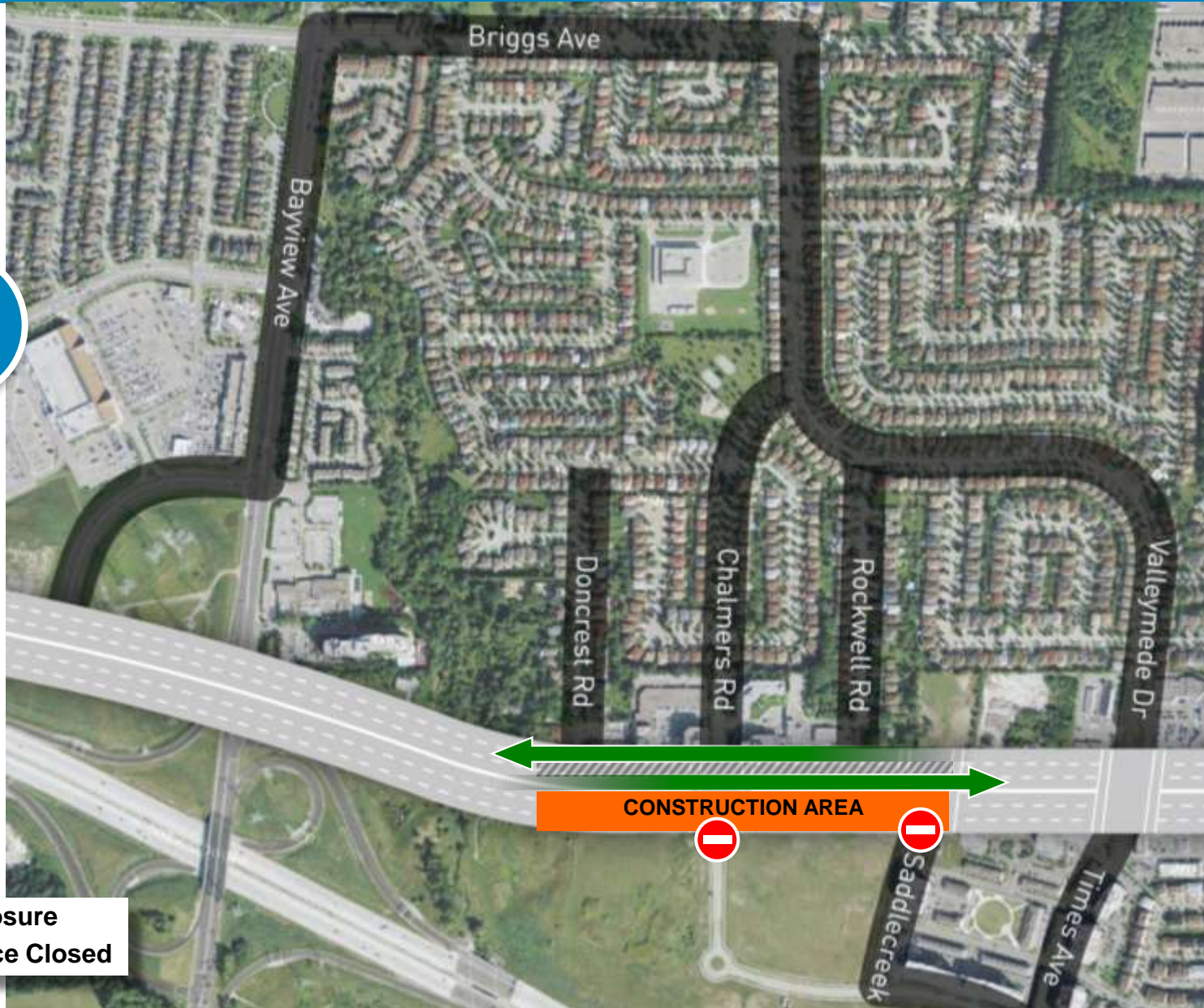


 Full Closure

 Entrance Closed

Doncrest to Saddlecreek

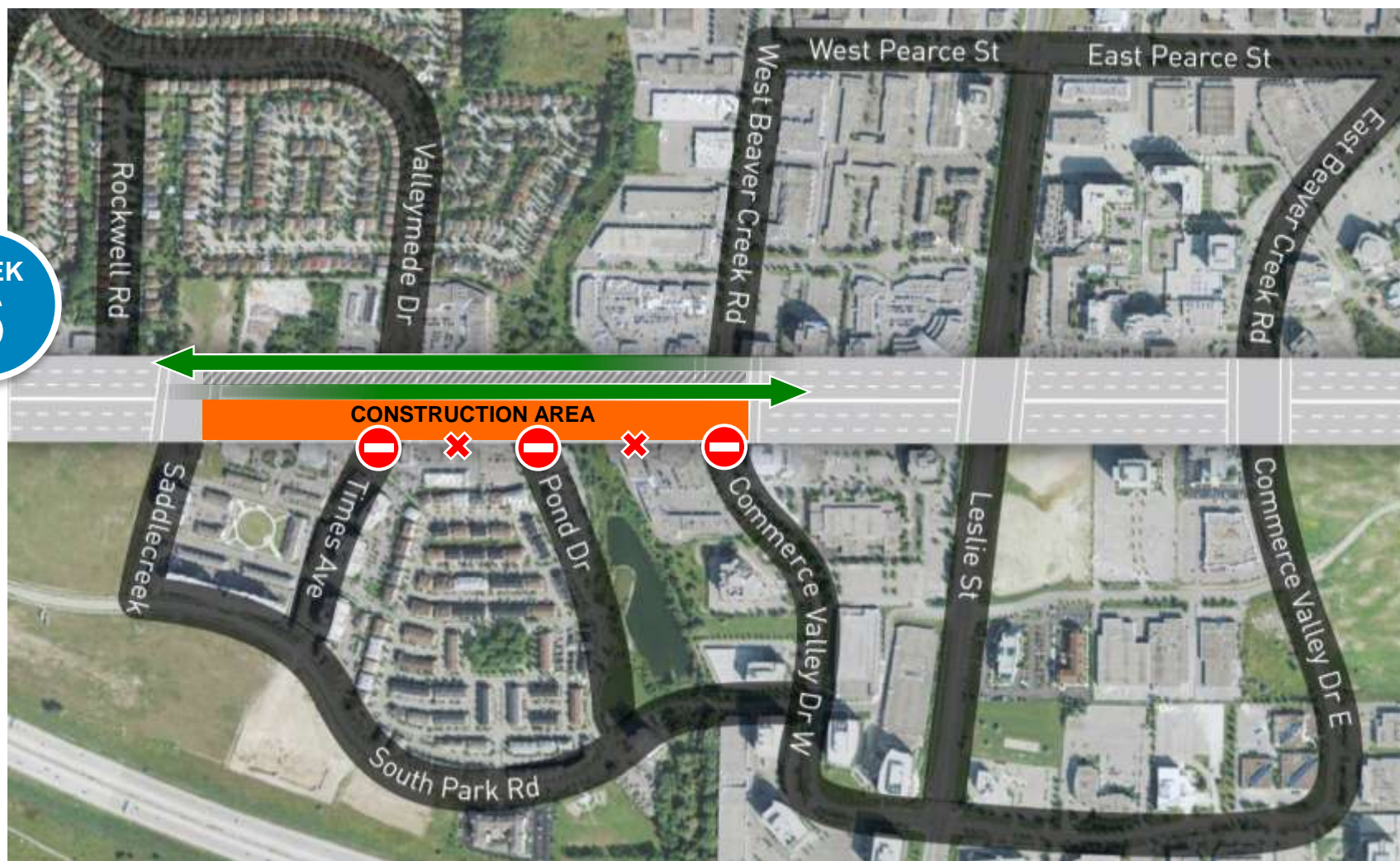
WEEK
5




-  Full Closure
-  Entrance Closed

Saddlecreek to Commerce Valley Drive W

WEEK
6



-  Full Closure
-  Entrance Closed

Commerce Valley Drive W to Commerce Valley Drive E

WEEK
7



-  Full Closure
-  Entrance Closed

- › Bulletin
- › Bilingual notice
- › News release and traffic advisory
- › Radio and print ads
- › Posters
- › Roadside electronic billboard and construction detour signage
- › Social media and web updates
- › Personal contact from Community Liaison Specialist



supporting businesses along Highway 7



Thank you...

