



Report to: Development Services Committee

Report Date: November 6, 2012

---

**SUBJECT:** Temporary Road Closure of a Section of Village Parkway  
from Landmark Court to Highway 7

**PREPARED BY:** Mansoor Ali, Engineering (ext. 2523)

---

**RECOMMENDATION:**

- 1) That the November 6, 2012 report entitled 'Temporary Road Closure of a Section of Village Parkway from Landmark Court to Highway 7' be received;
- 2) That temporary closure of Village Parkway from Landmark Court to Highway 7 be approved to facilitate municipal infrastructure construction, for a forecast period from Friday November 16, 2012 at 8:00 PM to Monday November 23, 2012 at 8:00 AM subject to public notice, signage and scheduling to be confirmed by the Director of Engineering; and
- 3) That staff be authorized and directed to do all things necessary to give effect to this resolution.

**PURPOSE:**

To obtain Council's approval for the closure of Village Parkway from Landmark Court to Highway 7 for approximately one week to facilitate the construction of a storm sewer at the intersection of Highway 7 and Village Parkway.

**BACKGROUND:**

On June 14, 2011, Council authorized the execution of agreement(s) with the Developer(s) and York Region for the construction and funding of the Highway 7 Stormwater Management Facilities (the Project), comprising a stormwater management pond (Sheridan Pond) and municipal storm sewers as noted on Attachment "A".

The completion of the Project will permit development in the Highway 7/Village Parkway area to proceed and provide a storm outfall for York Region's Highway 7 Road widening project scheduled for 2014.

A Development Agreement related to the construction of the Project was signed on September 6, 2012 between the City and the Developers. The construction has commenced and the completion of this Project is expected in mid December 2012.

**OPTIONS/ DISCUSSION:****1. Proposed Temporary Road Closure**

During the construction of the sewer crossing at the intersection of Highway 7 and Village Parkway, Village Parkway from Landmark Court to Highway 7 has to be temporarily closed for approximately one week and Highway 7 will be reduced to one lane of traffic in each direction in the vicinity of Village Parkway, (see Attachment "B").

The proposed road closure of Village Parkway is required for safety reasons and to reduce the construction timeframe. This will result in one week of temporary road closure instead of three separate temporary road closures on three separate weekends.

The anticipated schedule for the closure of Village Parkway from Landmark Court to Highway 7 is from Friday November 16, 2012 at 8:00 PM to Monday November 23, 2012 at 8:00 AM. Given the potential changes to the construction schedule due to weather and scheduling matters (e.g. location of underground utilities), it is recommended that the actual closure period be confirmed by the Director of Engineering in consultation with York Region.

The Developers have received a noise exemption from the City from August 20, 2012 to late fall 2012 to work longer hours (7:00 AM to 7:00 PM) to reduce the construction period.

**2. Communication Plan and Notices**

Detailed Public Communication Plan for the Project has been prepared by the Developers' Consultant and reviewed by City staff and York Region. Communication includes:

- Written notices to be hand delivered to businesses on Highway 7 between Birchmount Road and Sciberras Road, 1 week prior to the road closure
- Public Notification in the local newspaper (Economist and Sun)
- Communication to agencies having jurisdiction including emergency services, transit authorities, public utilities, and school board
- Advanced road closure signage on Highway 7, Village Parkway, 16<sup>th</sup> Avenue and Carlton Road. Temporary signs will be erected 1 week prior to the road closure at key intersections to give motorists advanced warnings

**3. Traffic Management Plan**

The Traffic Management Plan on Highway 7 has been approved by the York Region in consultation with the City.

The Traffic Management Plans provide details of various signage, number of lanes opened, location of lanes and temporary staging of construction, and details of road closure at Highway 7 and Village Parkway.

---

Staff recommend that Village Parkway be closed from Landmark Court to Highway 7 for approximately a week subject to the following conditions:

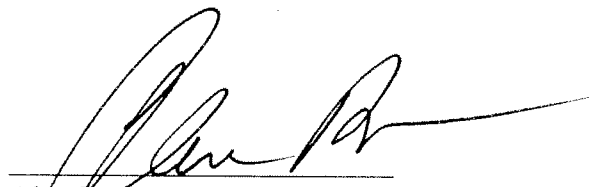
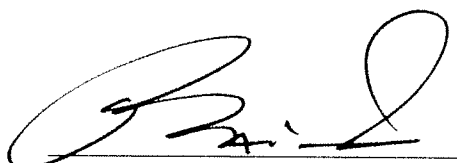
1. The Developers implement a Traffic Management Plan prepared by SCS Consulting Group Ltd. dated August 2012, or any revisions as required by the Director of Engineering and York Region;
2. The Developers implement a Communication Plan to the satisfaction of the City and includes any revisions as required by staff; and
3. Staff to update the City's web site to inform residents/businesses of project details, road closures, and contact information.

**FINANCIAL CONSIDERATIONS AND TEMPLATE:**  
NIL

**BUSINESS UNITS CONSULTED AND AFFECTED:**

The Operations Department in Community & Fire Services Commission have reviewed this report and they concur with the recommendations.

**RECOMMENDED BY:**

  
\_\_\_\_\_  
Alan Brown, C.E.T.  
Director of Engineering  
\_\_\_\_\_  
Jim Baird, M.C.I.P., R.P.P.  
Commissioner, Development Service

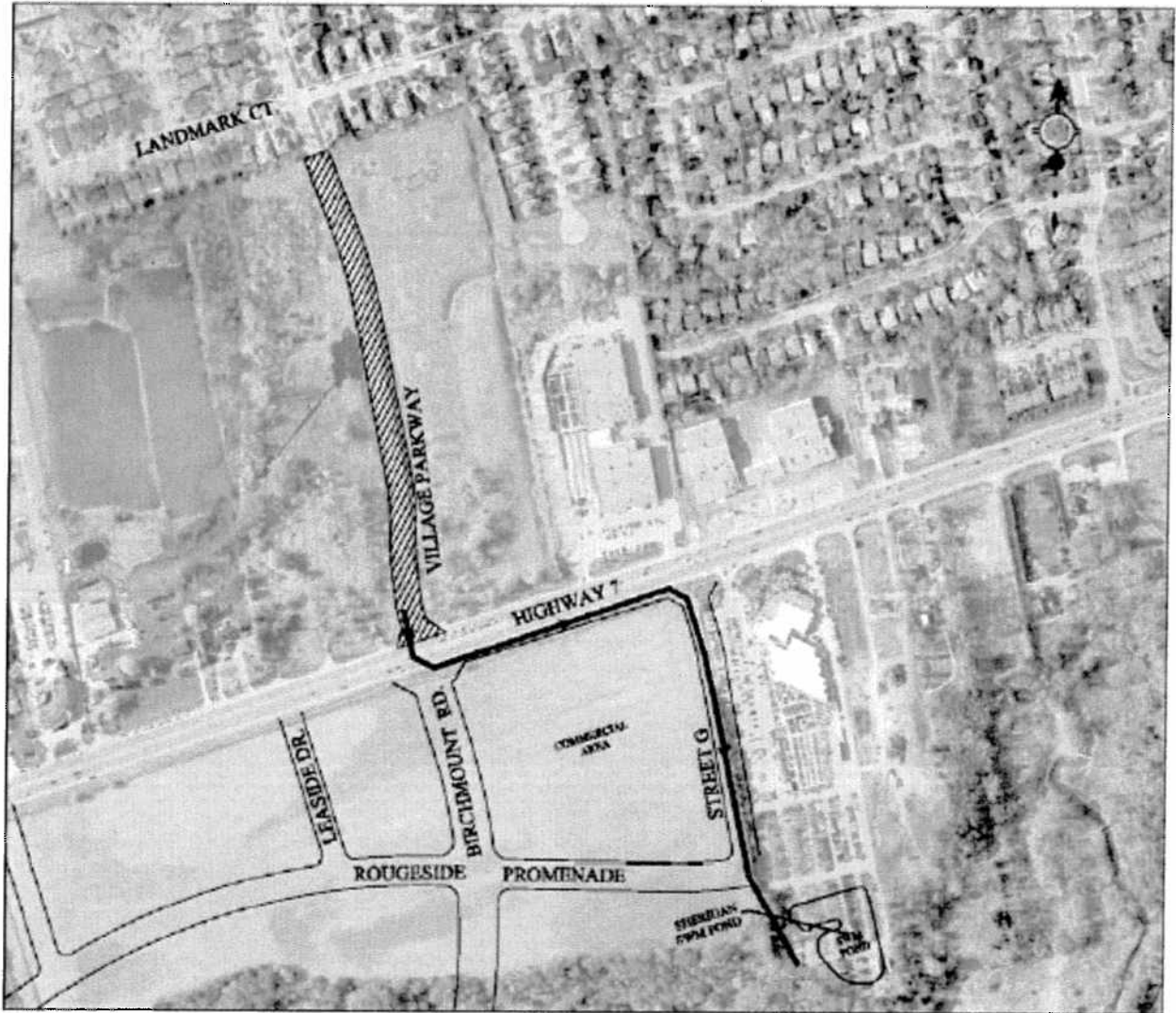
**ATTACHMENTS:**

Attachment 'A' – Location Plan for the Project

Attachment 'B' – Details of Traffic Staging Plan during closure of Village Parkway

**Attachment 'A'**

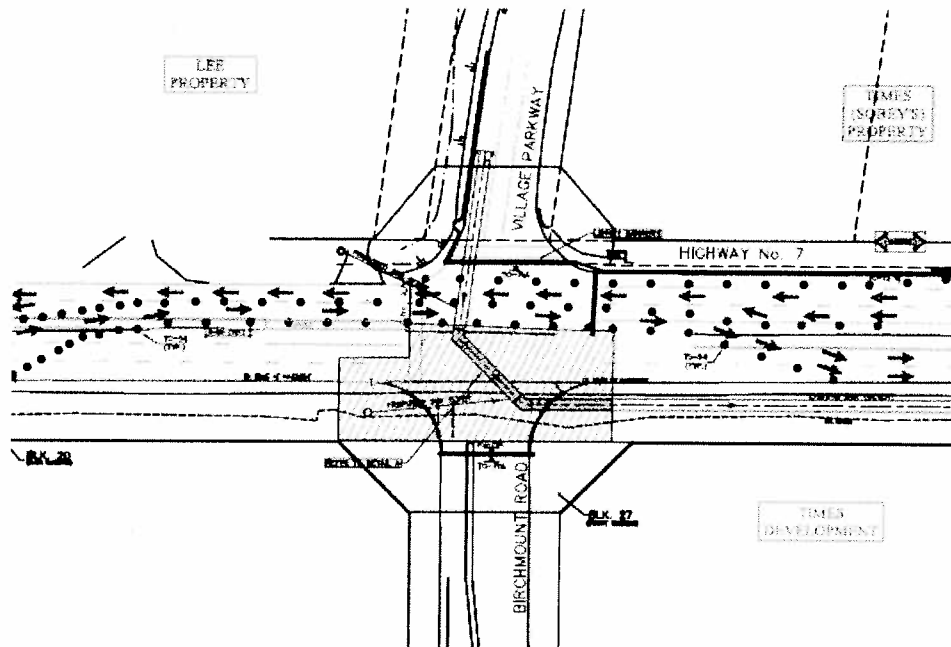
**Location Plan for the Project**



## Attachment 'B'

### Details of Traffic Staging Plan during closure of Village Parkway

#### Construction on South Side of Highway 7



#### Construction on North Side of Highway 7

