



Report to: Development Services Committee

Report Date: June 18, 2013

SUBJECT: Re-construction and Temporary Road Closure of Village Parkway
between Highway 7 and Landmark Court

PREPARED BY: Mansoor Ali, Engineering (ext. 2523)

RECOMMENDATION:

- 1) That the report titled 'Re-construction and Temporary Road Closure of Village Parkway between Highway 7 and Landmark Court' dated June 18, 2013 be received;
- 2) And that Council authorize the Mayor and Clerk to execute construction agreement(s) for re-construction of Village Parkway, from Highway 7 to Landmark Court with the Times Group/Unionville Development Corp (Lee) and/or North Avenue 7 Developers Group Inc. and/or any other parties having jurisdiction, in a form satisfactory to the Chief Administrative Officer and the City Solicitor;
- 3) And that temporary road closure of Village Parkway between Highway 7 and Landmark Court be approved to facilitate the re-construction of Village Parkway and installation of underground services for a forecast period from Monday July 5, 2013 to Monday October 28, 2013, subject to conditions listed in this report;
- 4) And that an exemption to the City's Noise Control By-Law 2003-137 be made to extend the hours of work from 7:00 AM to 9:00 PM on weekdays and from 7:00 AM to 7:00 PM on weekends and holidays during the road closure period;
- 5) And that Staff be authorized and directed to do all things necessary to give effect to this resolution.

PURPOSE:

The purpose of this report is to obtain Council's authorization for the Mayor and Clerk to execute a Construction Agreement for the re-construction of Village Parkway, and approval for the temporary closure of Village Parkway between Highway 7 and Landmark Court from July 5, 2013 to October 28, 2013 to facilitate the re-construction of Village Parkway and installation of underground services.

BACKGROUND:

Village Parkway from Highway 7 to Landmark Court is currently a two-lane rural cross-section road which is sub-standard without a storm sewer system, sidewalks, and bike lanes. This section of Village Parkway will be reconstructed with an urban cross-section, improved profile and horizontal realignment, curb and gutter, dedicated cycle tracks, sidewalks, streetlights, landscaping, and a traffic roundabout. The re-constructed road, including underground services, will improve the road function and public safety, and will support the development of adjacent lands.

A Municipal Class Environmental Assessment (EA) study was undertaken in early 2011 for Village Parkway Improvements from Highway 7 to Landmark Court. It had gone through the required public process including two Public Information Centres (public meeting) to present the alternatives and collect comments. The EA study recognized that the existing Village Parkway will have to be completely removed and re-constructed. The EA study was approved by Council on December 13, 2011 and later by the Ministry of Environment (MOE).

On November 6, 2012, Council approved a report entitled "Temporary Road Closure of Village Parkway" for the closure of Village Parkway and lane reduction on Highway 7 for about 10 days in November 2012 to facilitate the construction of a major storm sewer crossing on Highway 7, subject to modification as approved by the Director of Engineering. Due to various construction and intersection operations issues, the project was delayed and hence there was no closure of Village Parkway as anticipated in November 2012.

OPTIONS/DISCUSSION:

Road Closure

The road closure of Village Parkway, from Highway 7 to Landmark Court, is needed for the following reasons:

- New underground municipal services (i.e. watermain, storm sewers, and sanitary sewers) are to be constructed in the road
- Construction of underground utilities including removal and replacement of the existing streetlight poles
- The new road section will be raised over 1.5 m for about 50% of its length to improve the road profile and drainage
- The existing road is a rural cross-section and in order to change it to urban cross-section, there is significant amount of construction, i.e. curb and gutter, dedicated cycle tracks, sidewalks, streetlights, landscaping, and a traffic roundabout
- Traffic cannot operate safely with the above construction works, so from a safety and liability purpose the road needs to be closed

Construction Staging

The temporary road closure of Village Parkway will take place in two stages:

Stage 1: Construction of Storm Sewer Crossing on Highway 7 (July 5, 2013 to July 15, 2013)

As mentioned above, the temporary road closure for the construction of Storm Sewer Crossing on Highway 7 was approved by Council on November 6, 2012. However, this project was delayed and will now be constructed along with the re-construction of Village Parkway. The storm sewer crossing will be constructed in two sections as per Attachment 'A' and Highway 7 will be reduced from four lanes to two lanes. The access to Birchmount Road (south of Highway 7) will also be closed to traffic. Access to Birchmount Road and the retail plaza will be through a new Street (Street 'G') between the retail plaza and Sheridan Nurseries, which is planned to be signalized. Alternatively, paid police officer will be on duty to manage traffic if the intersection is not signalized. The first section to be constructed will be the south half of Highway 7, and therefore, traffic will be diverted to the north half of Highway 7. The second section will see construction on the north half of Highway 7 with traffic diverted to the South (one lane each way). The storm sewer crossing on Highway 7 will require the closure of Village Parkway and Birchmount Road (Un-assumed) for about ten (10) days.

Stage 2: Re-construction of Village Parkway (July 15, 2013 to October 28, 2013)

Upon completion of storm sewer crossing on Highway 7, the re-construction of Village Parkway will start. Birchmount Road will be reopened after the sewer crossing construction is completed. During re-construction of Village Parkway, traffic (all 4 lanes) will be maintained at all times on Highway 7. The re-construction of Village Parkway will require the closure of the existing road for approximately three (3) months following Stage 1.

Communication Plan

A detailed Public Communication Plan for the Project has been prepared by the Developers' Consultant SCS Consulting Group Ltd. dated August 2012 and reviewed by the City staff; key highlights of which are given below:

- Public notices, local newspaper ads, project construction signs
- Notices of road closure shall be placed in the local newspaper (i.e. Economist and Sun) for two consecutive weeks prior to date of the proposed road closure at the Developers expense
- The Developers shall erect, two weeks prior to the closure of the road, advance notification signage on Highway 7 and on Village Parkway in accordance with the approved Public Communication Plan stating start and completion dates of the Village Parkway closure
- Written notices shall be mailed out to the area residents and local commercial occupants two weeks prior to the road closure
- Communication to agencies having jurisdiction including emergency services, transit authorities, public utilities, operations, and school board will be provided
- Updates on City's website regarding the status of the project
- On-going dialogue with Ward Councillor on issues as they arise

Traffic Management Plan

Based on 2010 traffic count, Village Parkway volumes north of Highway 7 are as follows:

Morning Peak Hour: South Bound = 379 North Bound = 149

Evening Peak Hour: South Bound = 172 North Bound = 302

A Traffic Management Plan has been prepared and reviewed by the City and York Region and will be implemented to manage traffic on Highway 7 and the surrounding area during construction. Advanced road closure and detour route signage (Attachment 'B') shall be erected in the area by the Developers two weeks prior to the road closure and will remain for the entire duration of construction.

During road closure, the local drivers can use the existing collector road system in the area to access Warden Avenue and Kennedy Road.

Conditions for Temporary Closure of Village Parkway

The following conditions shall apply to the temporary closure of Village Parkway:

1. The Developers shall sign a Construction Agreement with the City for the re-construction of Village Parkway and provide necessary insurance and letter of credits;
2. The Developers shall implement a Traffic Management Plan and a detour route signage plan in accordance with the approved plan prepared by SCS Consulting Group Ltd. dated August 2012, or any subsequent plans approved by the Director of Engineering and York Region prior to or during the closure of the road;
3. The Developers shall implement the recommendations of the Communication Plan and make necessary revisions, as required;
4. The Developers shall notify all emergency services (Fire, Police, Ambulances), Operation Department, Transit, residents, and businesses as set out in the approved Public Communication Plan; and
5. Staff to update the City's web site.

Construction Agreement

A Construction Agreement between the City and the Developers (Times Group and Unionville Development Inc.) will be signed to identify the obligations of the parties on the re-construction of Village Parkway.

FINANCIAL CONSIDERATIONS AND TEMPLATE:

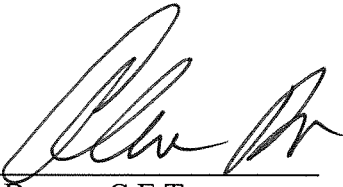
NIL

BUSINESS UNITS CONSULTED AND AFFECTED:

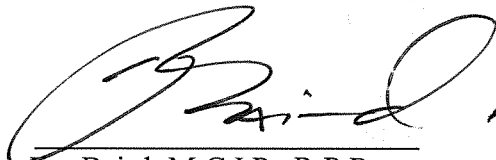
The Operations and Fire Departments of the Community & Fire Services have reviewed this report and their comments will be incorporated into the Traffic Management and Communication Plans.

Staff have also informed the Unionville Ratepayers Association and Village Parkway Ratepayers Association. A verbal update as to their comments will be provided to the Committee.

RECOMMENDED BY:



Alan Brown, C.E.T.
Director of Engineering

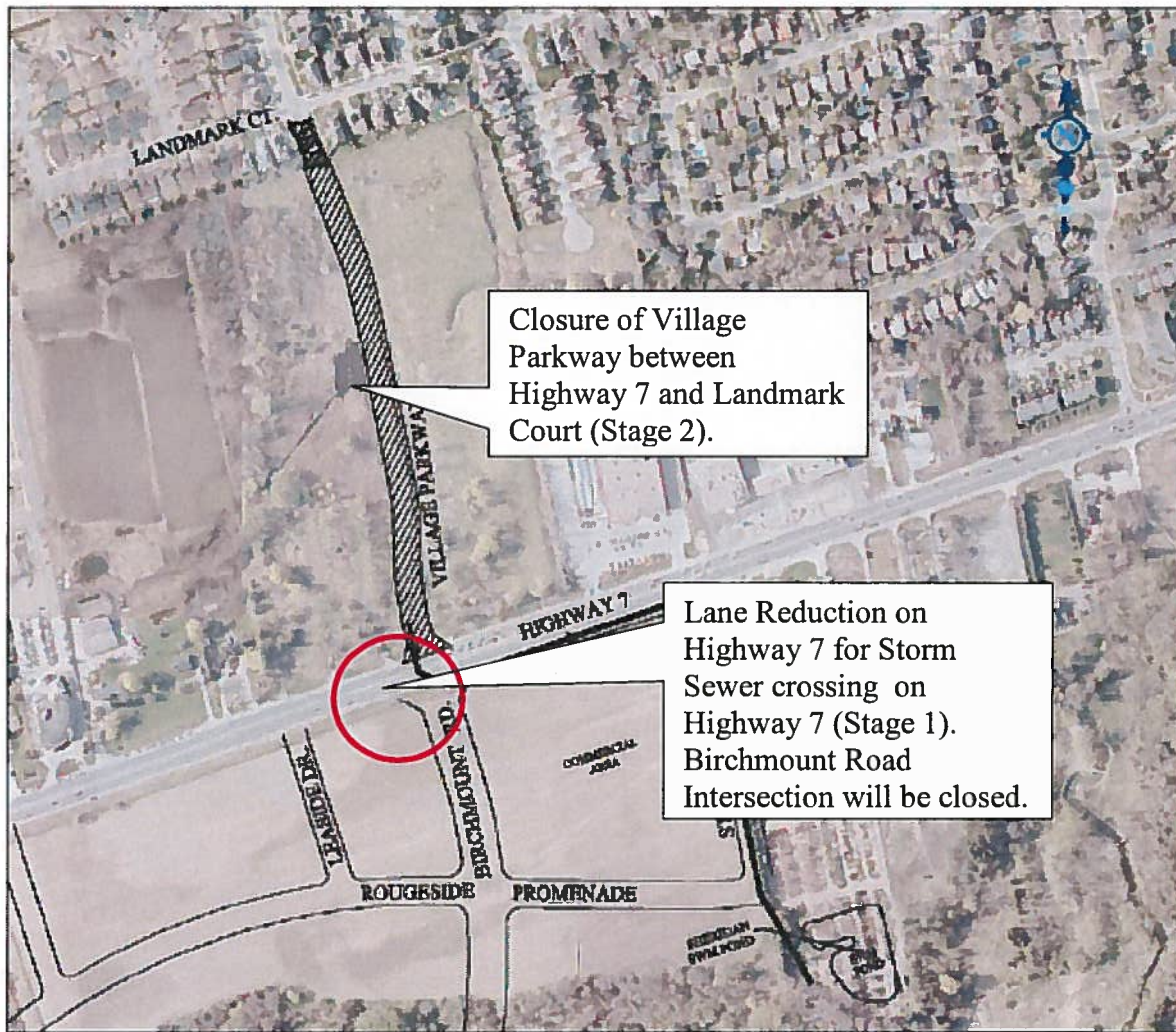


Jim Baird, M.C.I.P., R.P.P.
Commissioner, Development Service

ATTACHMENTS:

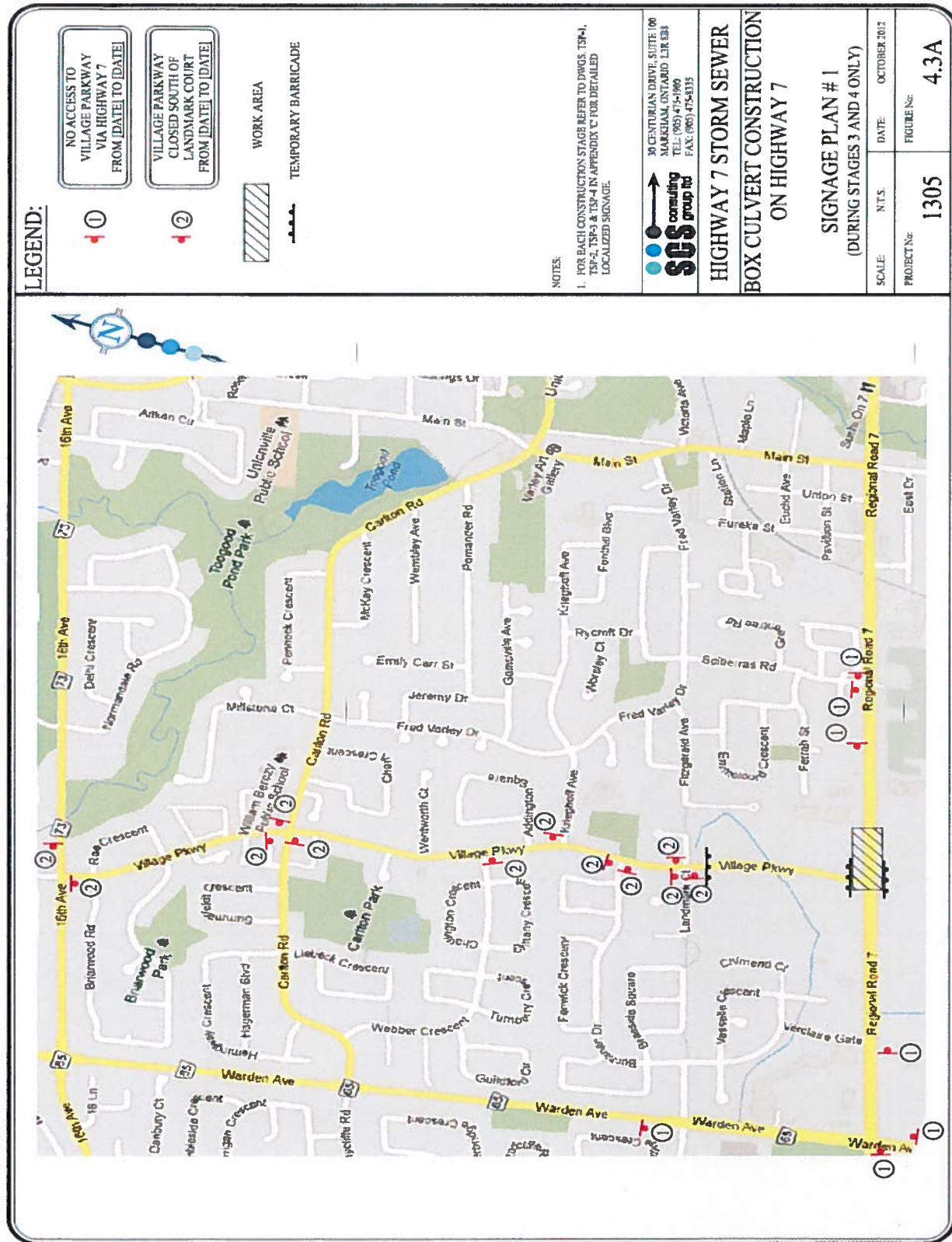
Attachment 'A' – Location of Road Closure

Attachment 'B' – Traffic Diversion Plan



Lane reduction on HWY 7

Attachment 'A' – Location of Road Closure



Attachment 'B' – Traffic Diversion Plan