

January 2013



*South Yonge Street Corridor Streetscape Master Plan*

# ***Streetscape Detailed Design Guidelines***

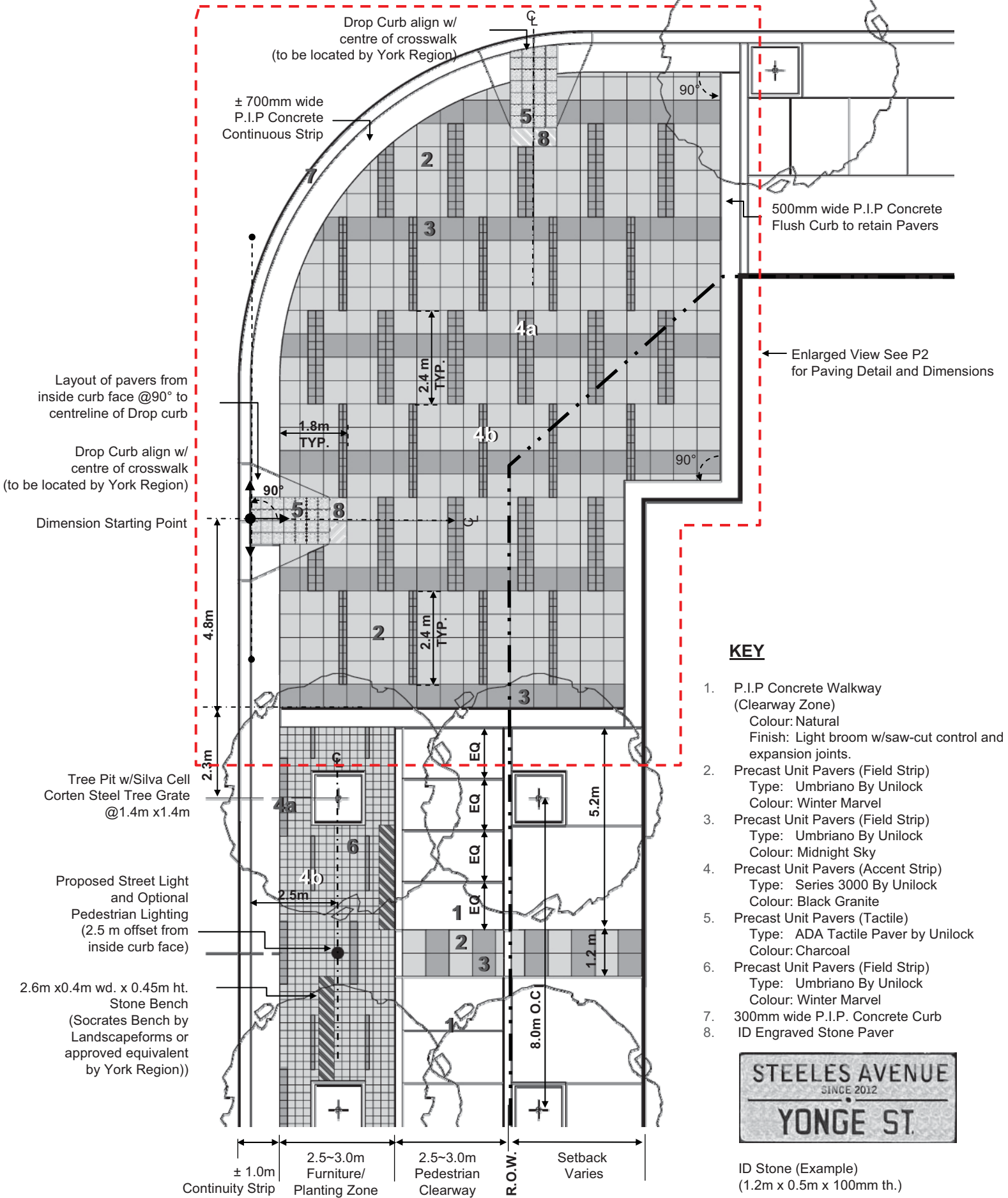


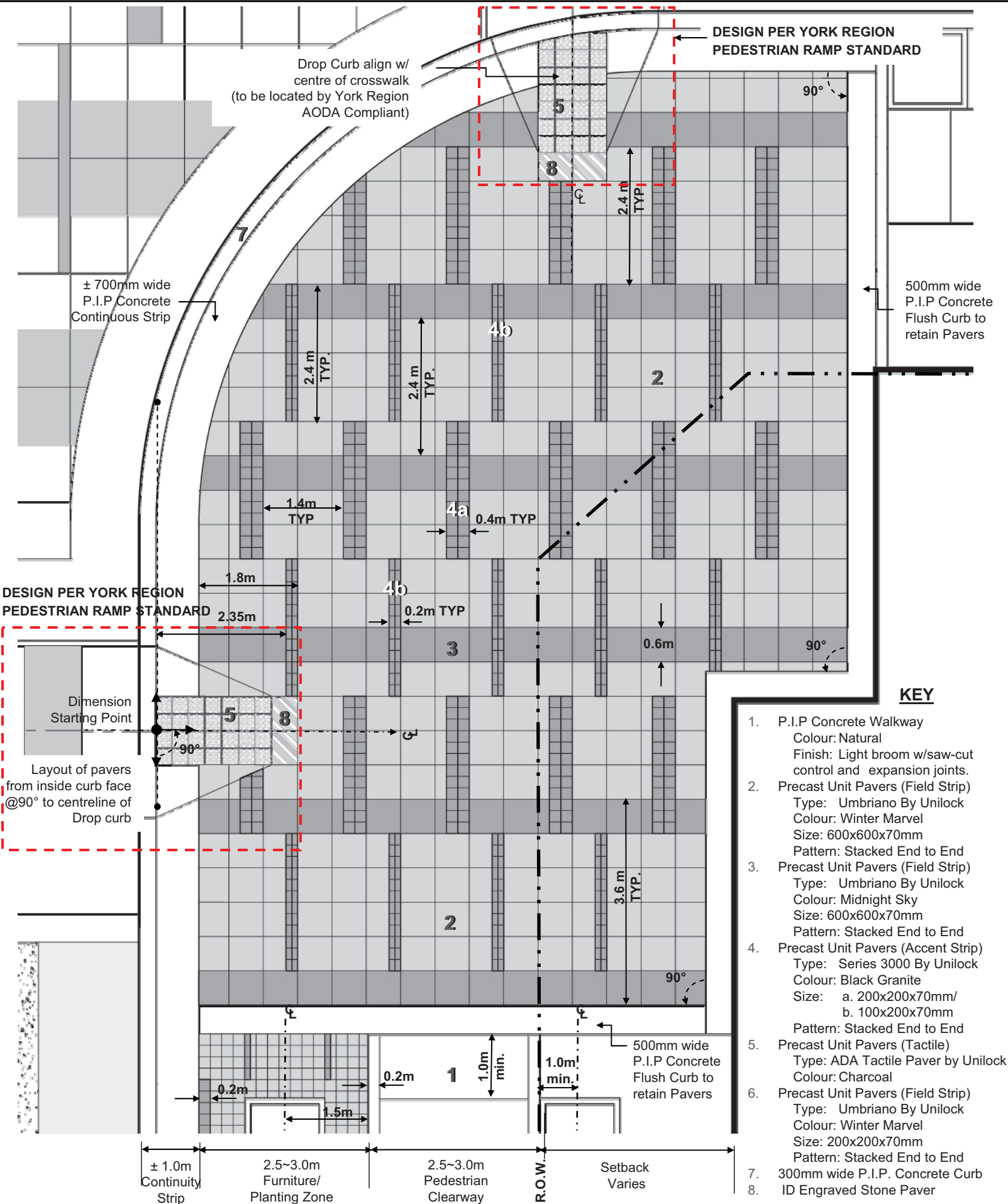
Prepared by:  
*EDA Collaborative Inc.*

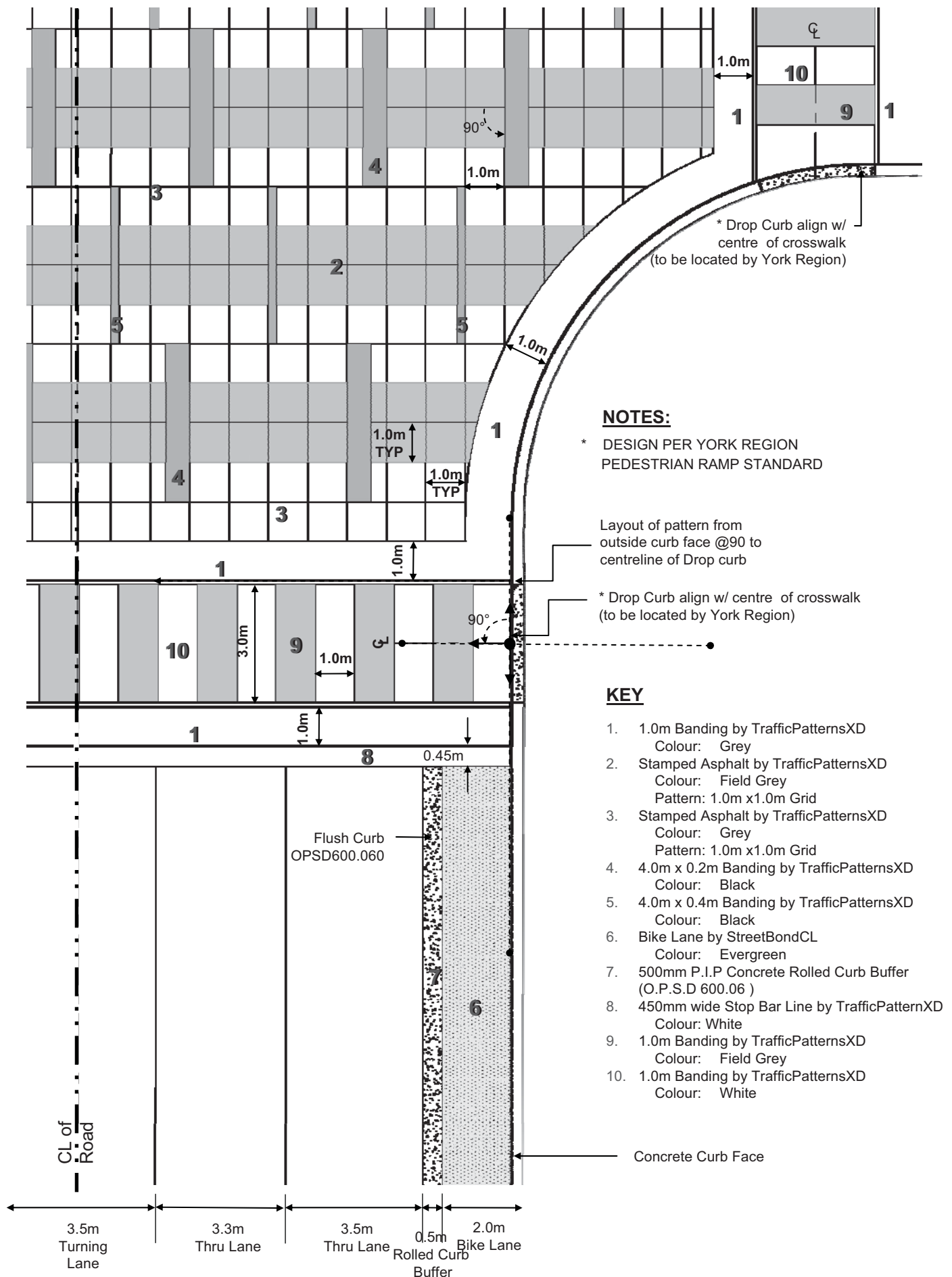
**EDA**  
Collaborative Inc.

## LIST OF DRAWINGS

<b>1.0</b>	<b>YONGE+ STEELES</b>	<b>PAGE</b>
1.1	MAJOR INTERSECTION BOULEVARD	<b>2</b>
1.2	DETAILED PAVING BOULEVARD	<b>3</b>
1.3	MAJOR INTERSECTION ROADWAY	<b>4</b>
1.4	MID-BLOCK W/ PROPOSED TREES	<b>5</b>
1.5	REFERENCE FOR ILLUSTRATION PURPOSE	<b>6</b>
<b>2.0</b>	<b>CLARK STATION</b>	
2.1	MAJOR INTERSECTION BOULEVARD	<b>7</b>
2.2	DETAILED PAVING BOULEVARD	<b>8</b>
2.3	MAJOR INTERSECTION ROADWAY	<b>9</b>
2.4	MID-BLOCK W/ PROPOSED TREES	<b>10</b>
2.5	REFERENCE FOR ILLUSTRATION PURPOSE	<b>11</b>
<b>3.0</b>	<b>OLD THORNHILL</b>	
3.1	MAJOR INTERSECTION BOULEVARD	<b>12</b>
3.2	DETAILED PAVING BOULEVARD	<b>13</b>
3.3	MAJOR INTERSECTION ROADWAY	<b>14</b>
3.4	MID-BLOCK (MINIMUM W/ PROPOSED STREET TREES)	<b>15</b>
3.5	MID-BLOCK (MINIMUM W/ EXISTING TREES)	<b>16</b>
3.6	REFERENCE FOR ILLUSTRATION PURPOSE	<b>17</b>
<b>4.0</b>	<b>NEW THORNHILL</b>	
4.1	MAJOR INTERSECTION BOULEVARD	<b>18</b>
4.2	DETAILED PAVING BOULEVARD	<b>19</b>
4.3	MAJOR INTERSECTION ROADWAY	<b>20</b>
4.4	MID-BLOCK W/ PROPOSED TREES (SURFACE CONDITION VARIES)	<b>21</b>
4.5	REFERENCE FOR ILLUSTRATION PURPOSE	<b>22</b>
<b>5.0</b>	<b>TYPICAL DESIGN DETAILS</b>	
5.1	TYPICAL BOULEVARD CROSS SECTION @ INTERSECTION	<b>23</b>
5.2	TYPICAL BOULEVARD CROSS SECTION @ MID-BLOCK	<b>24</b>
5.3	TYPICAL BOULEVARD CROSS SECTION @ MID-BLOCK W/PLANTER	<b>25</b>
5.4	STONE SEATWALL+ PLANTER DETAILS	<b>26</b>



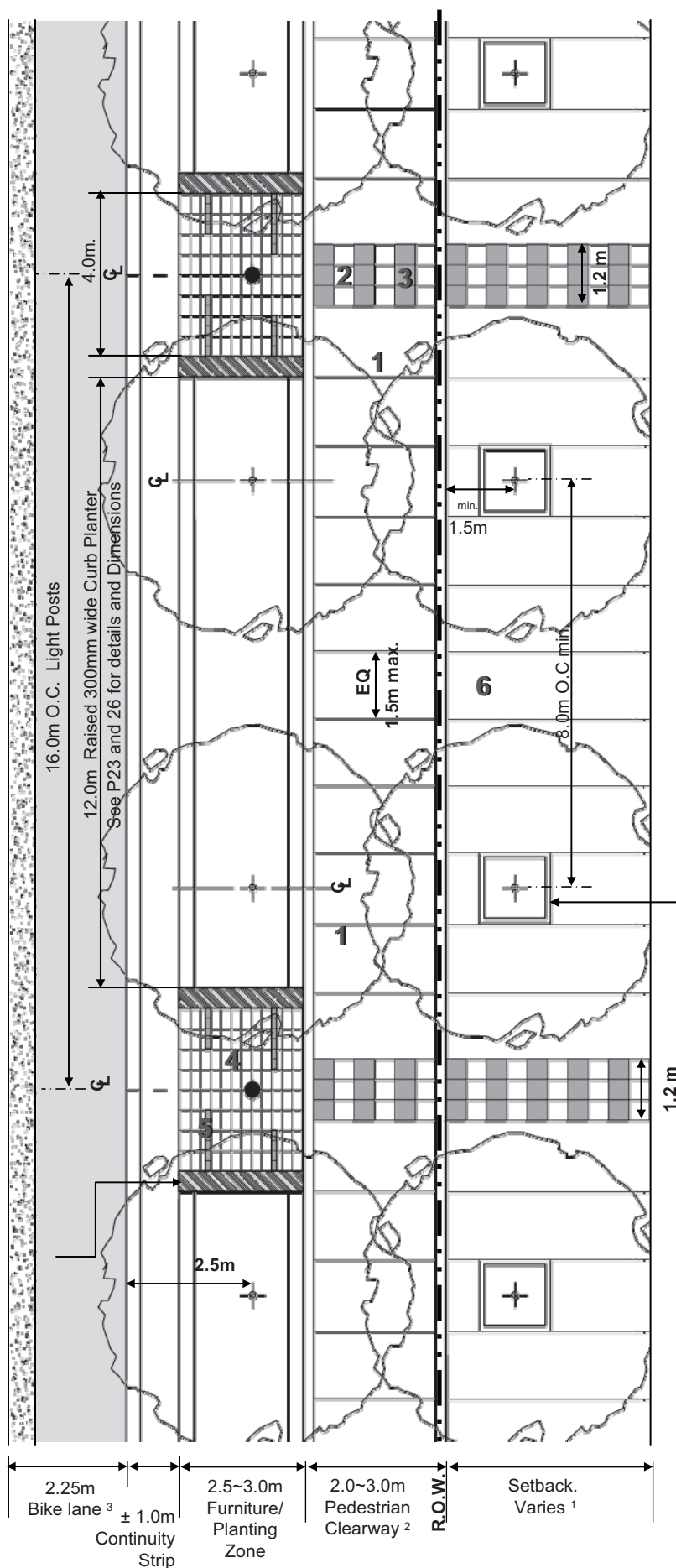




Proposed Street Light  
and Optional  
Pedestrian Lighting  
(16.0m max. Spacing)

Proposed Street Light  
and Optional  
Pedestrian Lighting  
(16.0m max. Spacing)

Stone Bench  
(95" Socrates Bench by  
Landscapeforms or  
approved equivalent)  
integrated w/planter  
See Details on P23,26



## KEY

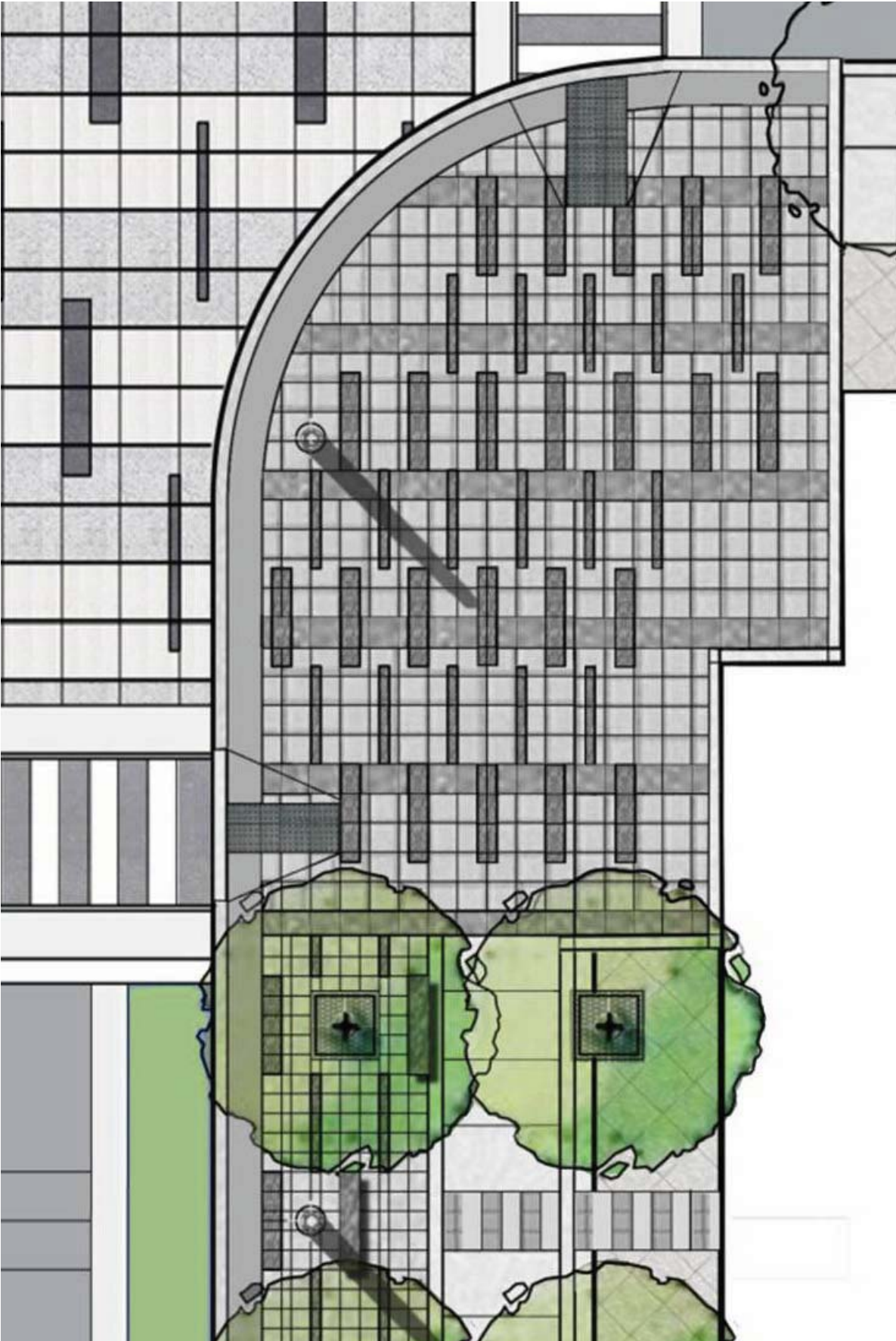
1. P.I.P. Concrete Walkway (Clearway Zone)  
Colour: Natural  
Finish: Light broom w/saw-cut control and expansion joints to form reduced panel design.
2. Precast Unit Pavers (Field Strip)  
Type: Umbriano By Unilock  
Colour: Winter Marvel  
Size: 400x400x70mm  
Pattern: Stacked End to End
3. Precast Unit Pavers (Field Strip)  
Type: Umbriano By Unilock  
Colour: Midnight Sky  
Size: 400x400x70mm  
Pattern: Stacked End to End
4. Precast Unit Pavers (Accent Strip)  
Type: Umbriano By Unilock  
Colour: Winter Marvel  
Size: 200x400x70mm/  
Pattern: Stacked End to End
5. Precast Unit Pavers (Accent Strip)  
Type: Series 3000 By Unilock  
Colour: Black Granite  
Size: 100x200x70mm  
Pattern: Stacked End to End
6. Paving Area w/in Setback

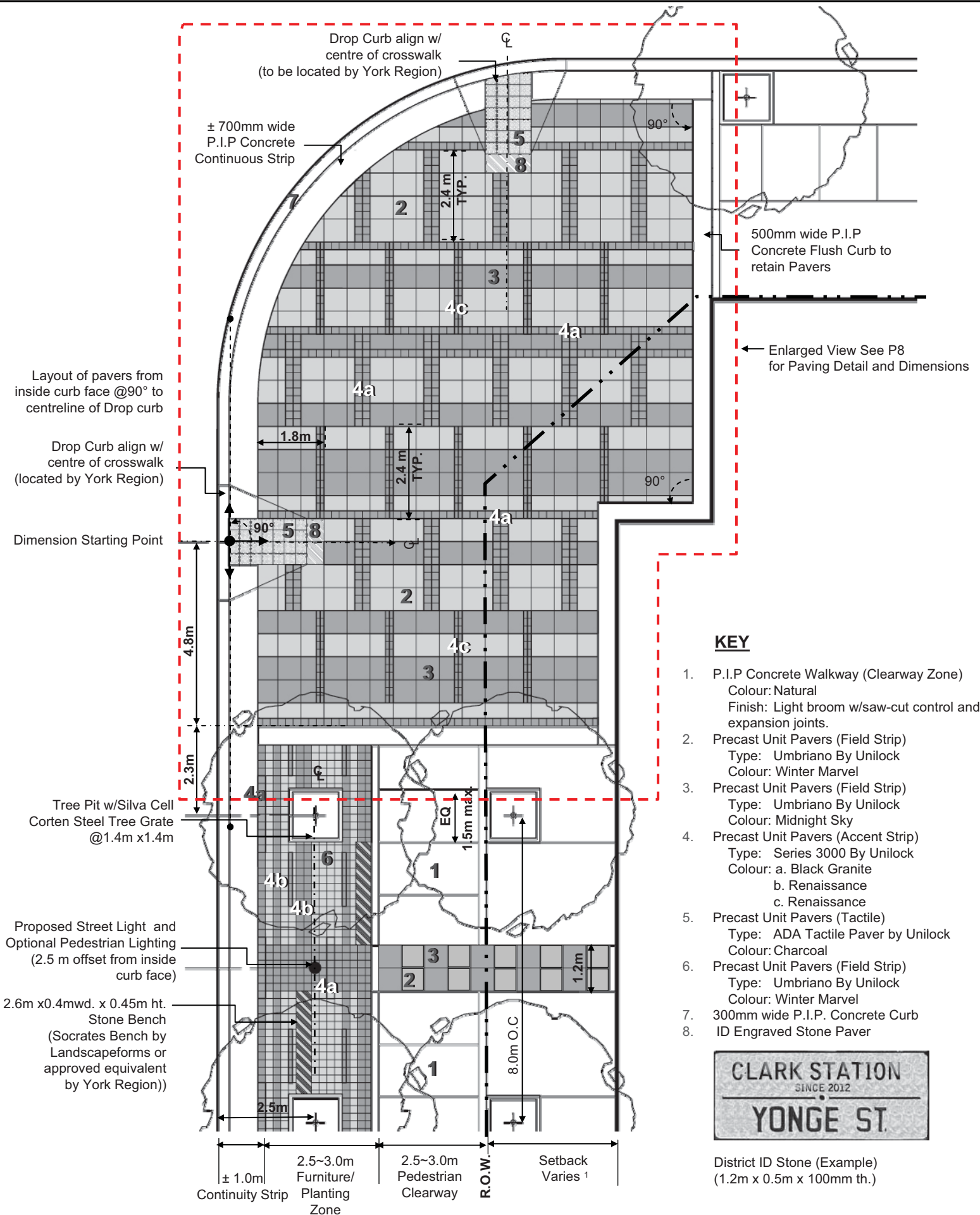
Proposed Tree w/  
Silva Cell in hard  
paving surface

## NOTES:

- 1 Existing, healthy trees to remain and be protected wherever possible
- 2 The desired width of the Pedestrian Clearway is a minimum of 2.5m.
- 3 A designated bike lane @ 2.00m wide w/0.5m rolled curb is desired.









# Clark Station: Detail Paving Boulevard

