

Markham Centre Study

Presentation to the City of Markham's Unionville Subcommittee
21 January 2014

BrookMcIlroy/

 CUSHMAN &
WAKEFIELD

 Turner &
Townsend
CMR

ARUP

Our team

ARUP



Hilary Holden

Project manager

ARUP



Richard Bickers

Site development
engineer

ARUP



Annika Hui

Transportation
and land use
planner

BrookMcIlroy/



Anne McIlroy

Design charrette
and engagement

CUSHMAN & WAKEFIELD



Julian Colman

Market feasibility
advisor



Canary Wharf, London, England



York, England

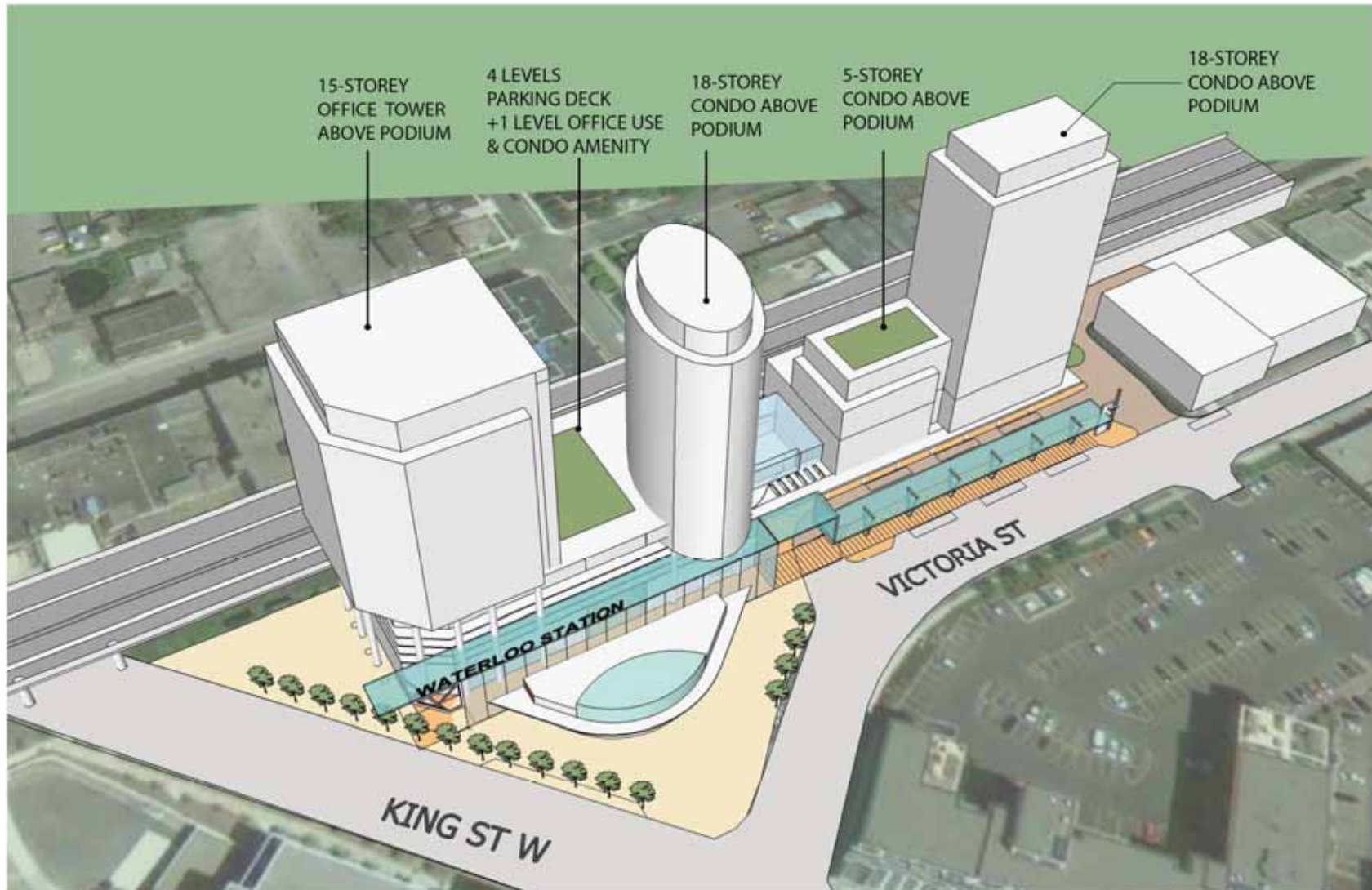


Olympic Park, London, England

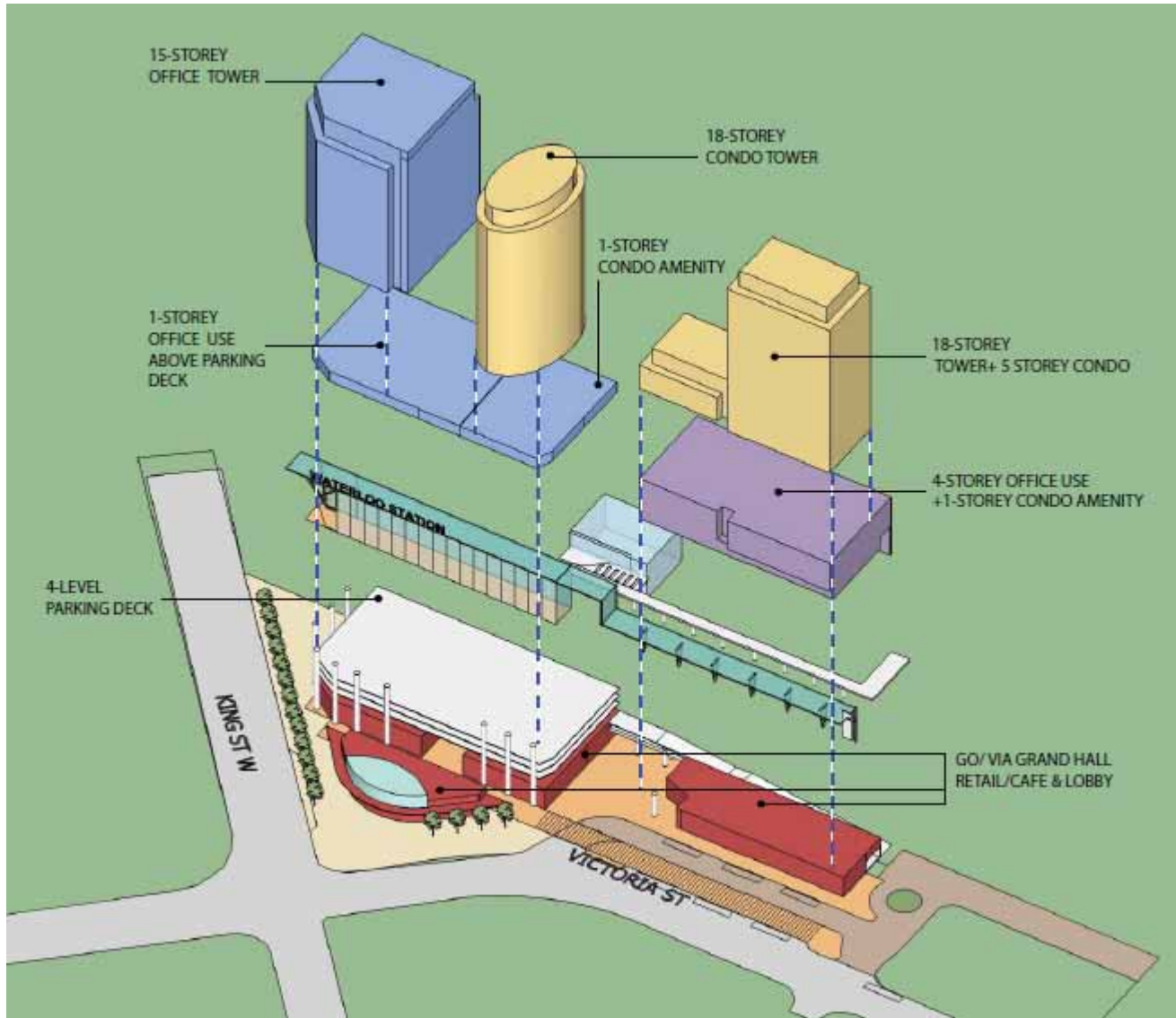


Kings Cross, London, England

Kitchener GO Station Area



Kitchener GO Station Area



The Study Area: Markham Centre





METROLINX





Masterplan 1994



adamson
ASSOCIATES | ARCHITECTS

A Partnership of Corporations

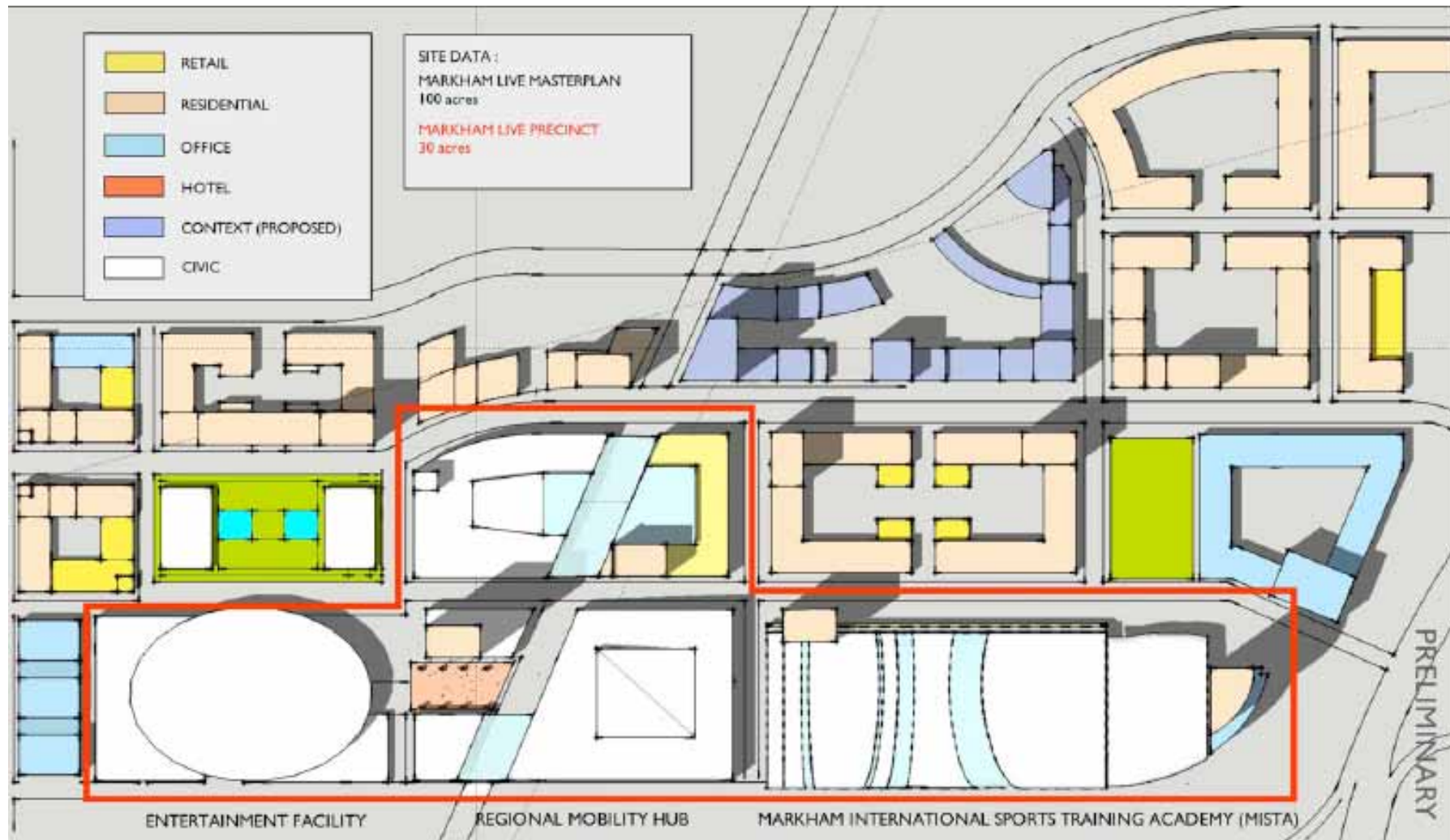


Masterplan 2011



adamson
ASSOCIATES | ARCHITECTS

A Partnership of Corporations

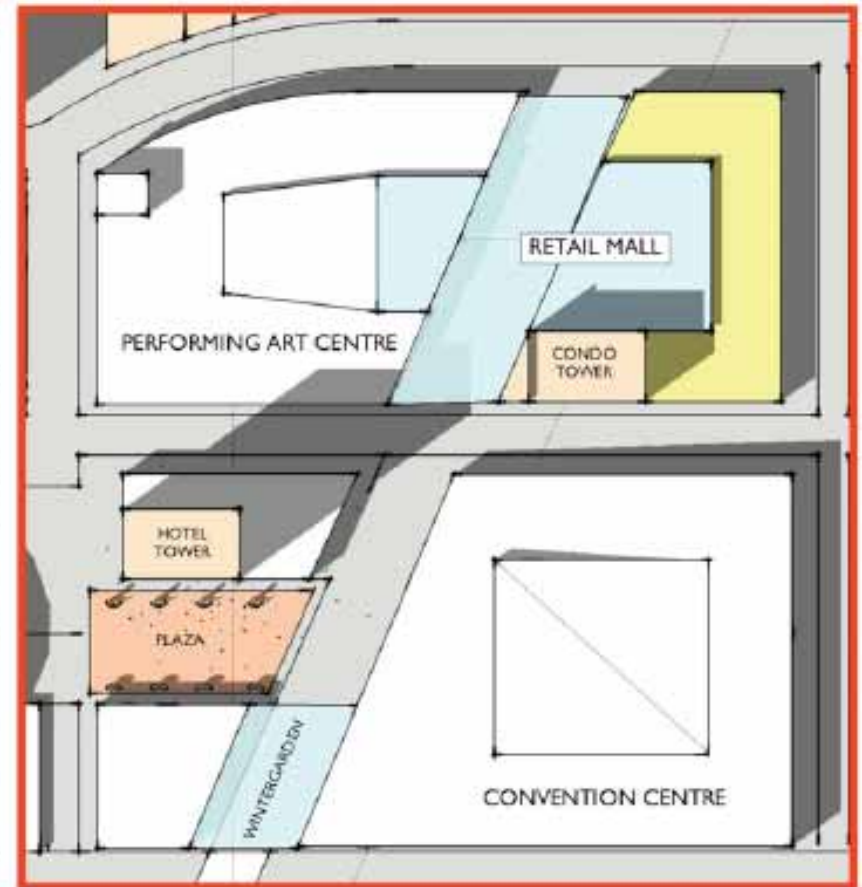
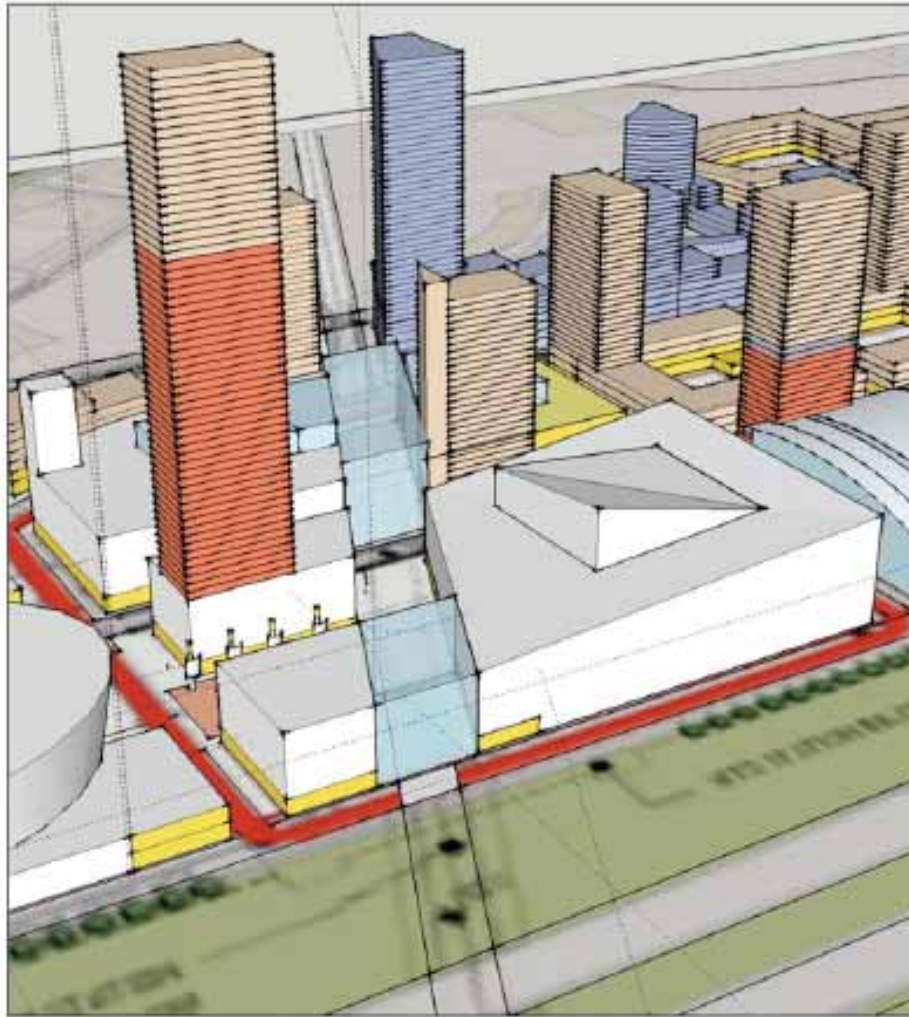


Masterplan 2011



adamson
ASSOCIATES | ARCHITECTS

A Partnership of Corporations

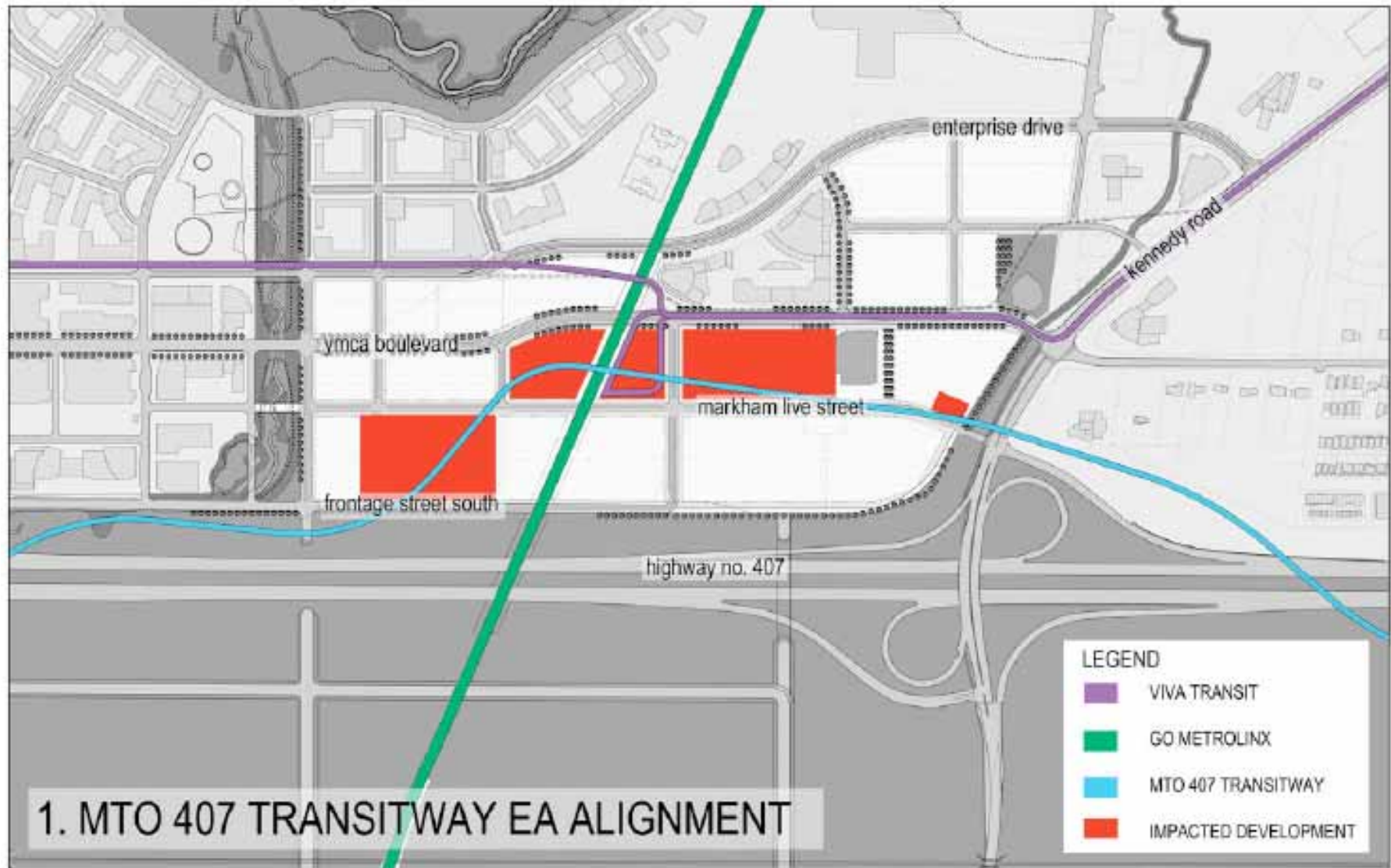


MOBILITY HUB

250 x 300m : 750,000 sm (18.5 acres)

PRELIMINARY

407 Transitway

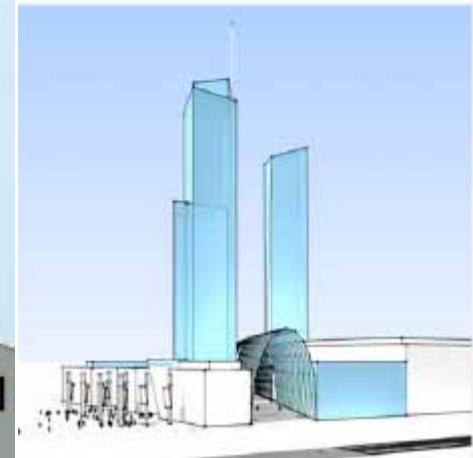
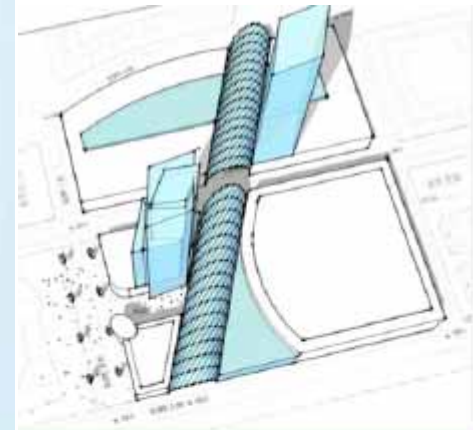


Masterplan 2011

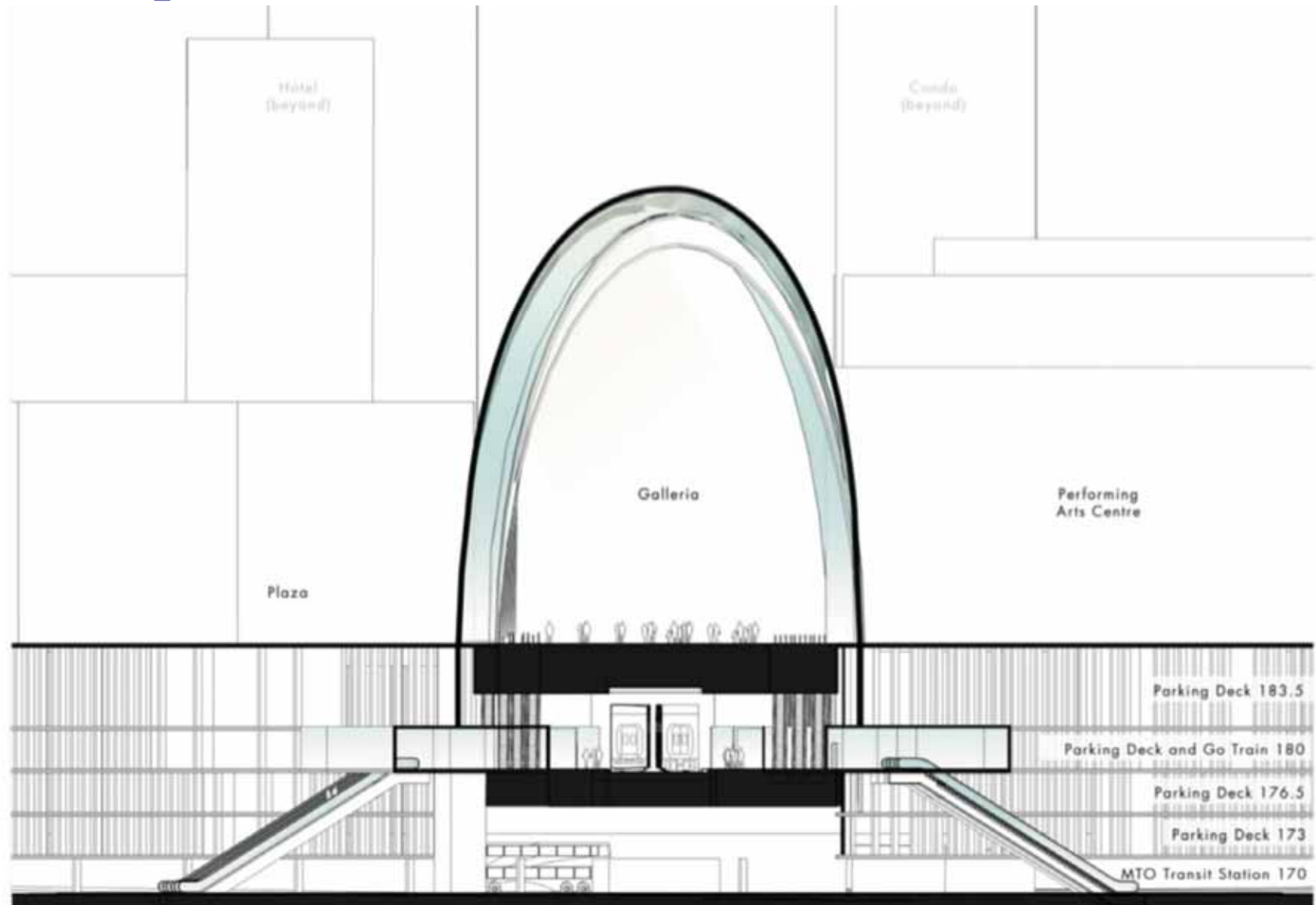


adamson
ASSOCIATES | ARCHITECTS

A Partnership of Corporations



Masterplan 2011



2014 Study Area: Markham Centre



How Metrolinx looks at land surrounding a station

Catchment area

Area of influence

Tertiary zone

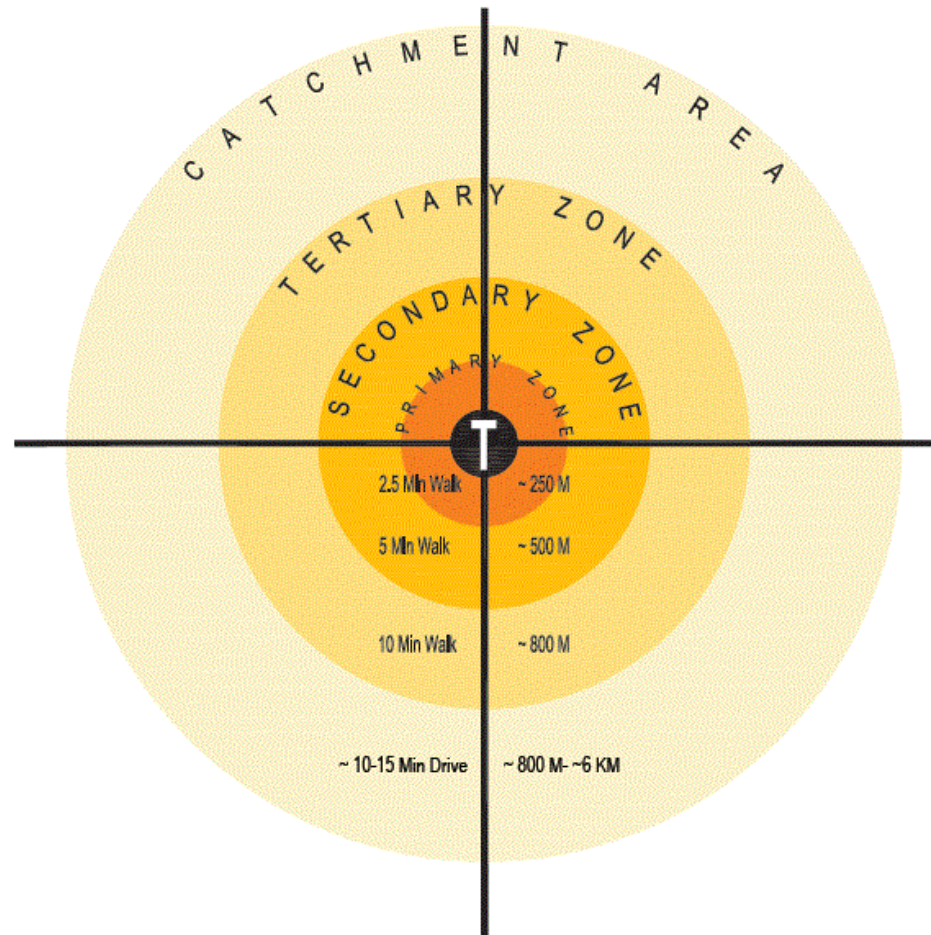
the neighbourhood

Secondary zone

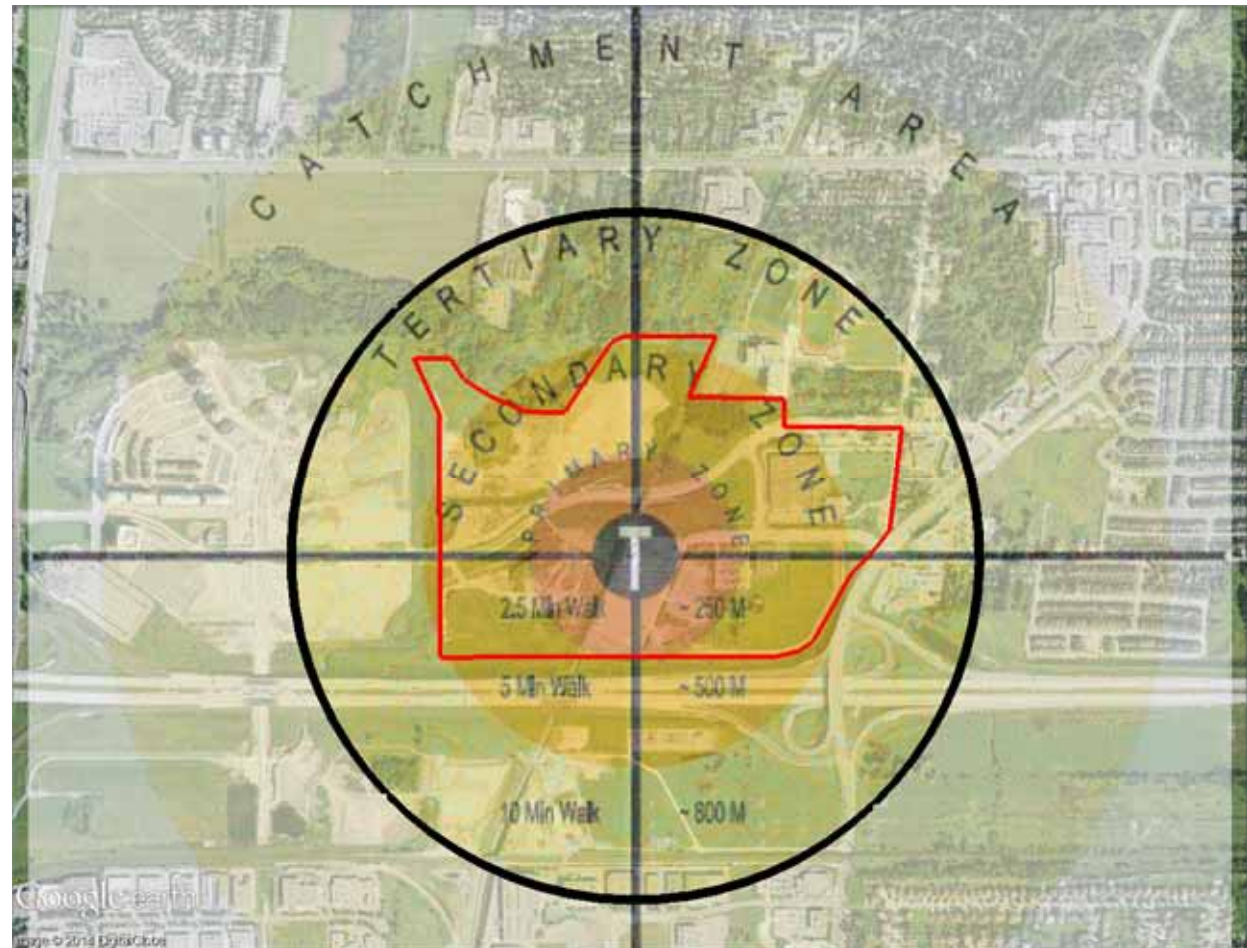
easy walking distance

Primary zone

immediate station area



Overlain onto Markham Centre/Unionville Station



Our Study will:

- Propose a unique destination
- Refine the secondary plan vision and development program
- Frame the case for transit improvements, including two-way all-day service on the Stouffville GO regional rail line
- Detail the open space and transportation networks
- Define the built form and character of urban design
- Integrate the station with the neighbourhood
- Engage the public and stakeholders
- Meet the Metrolinx guidelines for a Mobility Hub study
- Meet the Markham guidelines for a Precinct Plan study

Study Schedule

	January	February	March	April	May	June	July	August	September	October
Phase 1: Study Context and Site Review										
Phase 2: Vision and Planning/Design Principles										
Phase 3: Site Development Plan										
Phase 4: Technical Analysis										
Phase 5: Station Area Design and Layout										
Phase 6: Implementation and Phasing Plan										
Phase 7: Finalizing Study Deliverables										

Study Tasks 1-3 of 6

1. Study Context and Site Review

An overview of the study context, including:

- identifying stakeholders and developing a consultation plan
- reviewing existing plans, data, and design principles, and
- confirming the study area boundaries.

2. Vision and Planning/Design Principles

Reviewing and establishing the planning vision and planning/design principles.

3. Site Development Plan

The evolution of two urban development concepts through a design charette, and public and stakeholder consultation.

Site development engineering will be a large part of this task.

Study Tasks 4-6 of 6

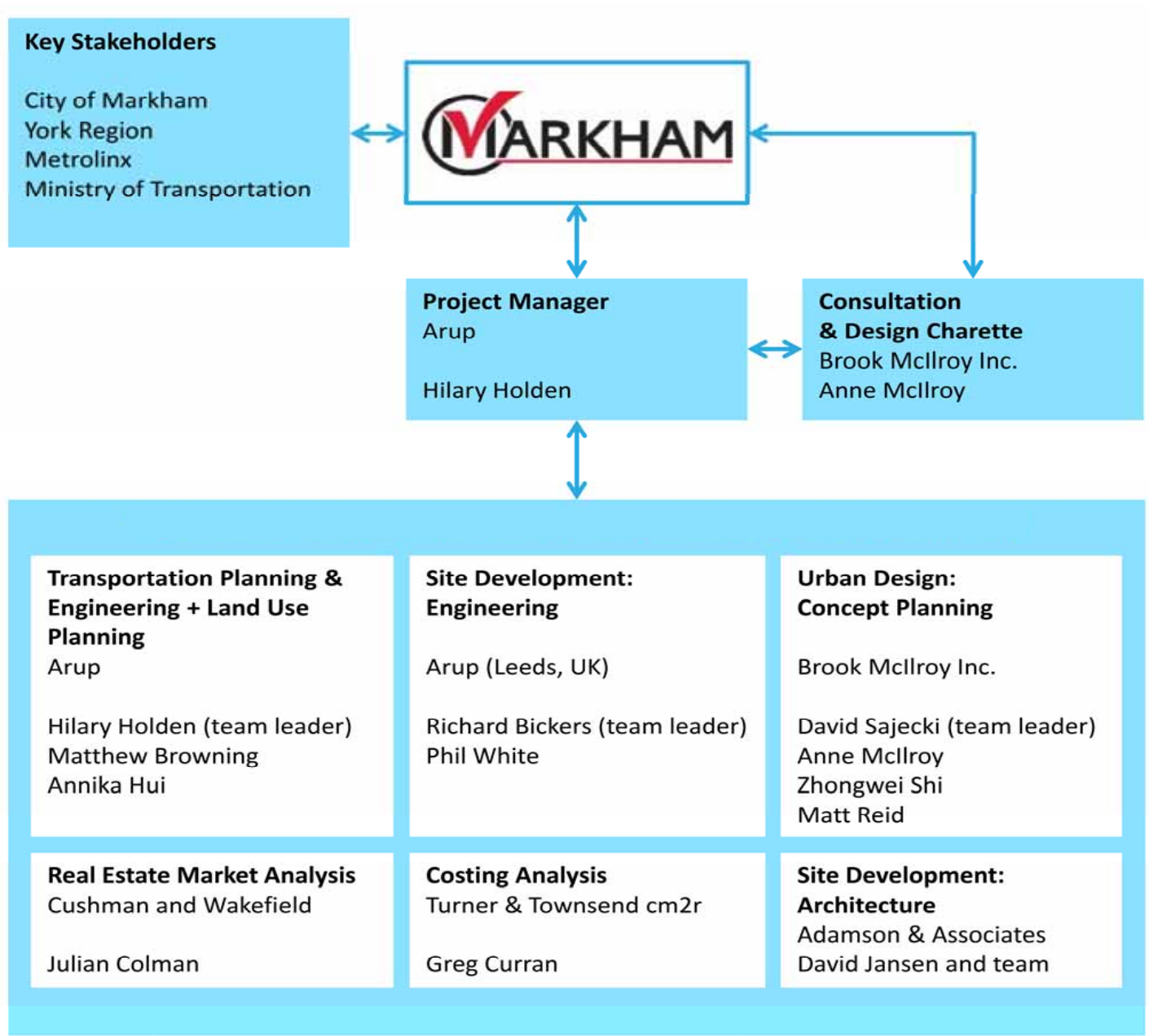
4. Technical Analysis

A conceptual design and layout for the Tertiary Zone including a land value and real estate market analysis. Transportation network opportunities and constraints to be analyzed for the Catchment Area

5. Station Area Design and Layout

A conceptual design and layout for the Primary Zone, including an order-of-magnitude costing analysis.

6. Implementation and Phasing Plan.



Arup	\$263,900
Brook McIlroy	\$108,175
Cushman & Wakefield	\$37,600
Turner & Townsend cm2r	\$15,600
Adamson Architects	\$100,000
Disbursements	\$29,390

Questions and Discussion

Presentation to the City of Markham's Unionville Subcommittee
21 January 2014

BrookMcIlroy/

 CUSHMAN &
WAKEFIELD

 Turner &
Townsend
CMAT

ARUP