



**Rouge National
Urban Park Initiative**
parksCanada.gc.ca/rouge



Rouge National Urban Park

Markham Development Services Committee

September 9, 2014



Parks
Canada

Parcs
Canada

Canada

Accomplishments To Date

- Funding Commitment & Park Concept Launch (May 2012)
- Public Engagement Program (June to October 2012)
- Interim Management Agreement with TRCA (April 2013)
- Federal-Provincial Agreement (June 2013)
- Transport Canada/Parks Canada MOU (June 2013)
- Tabling of the Act (June 2014)
- Release of the Draft Management Plan (June 2014)
 - Reflects Phase 1 public input (10,000 comments) and collaboration principles advanced by Markham
- Multi-Land Assembly Agreement now approved by all parties (June 2014)
- Effective First Nations and Stakeholder Relations (On-going)



Bill C-40

- An Act respecting the Rouge National Urban Park tabled in the House of Commons on June 13, 2014 (first reading)
- Legislates a new type of protected area managed by Parks Canada
- Park is being established to protect and present natural and cultural resources and to promote a vibrant farming community
- Second reading in the House began on June 19, 2014
- Second reading and transmittal to the House of Commons' Standing Committee on the Environment and Sustainable Development is expected in the fall
- Contains provisions and authorities, including mechanisms to: enlarge the park and add lands; establish advisory committee; dispose of lands for public infrastructure (up to 200 hectares)

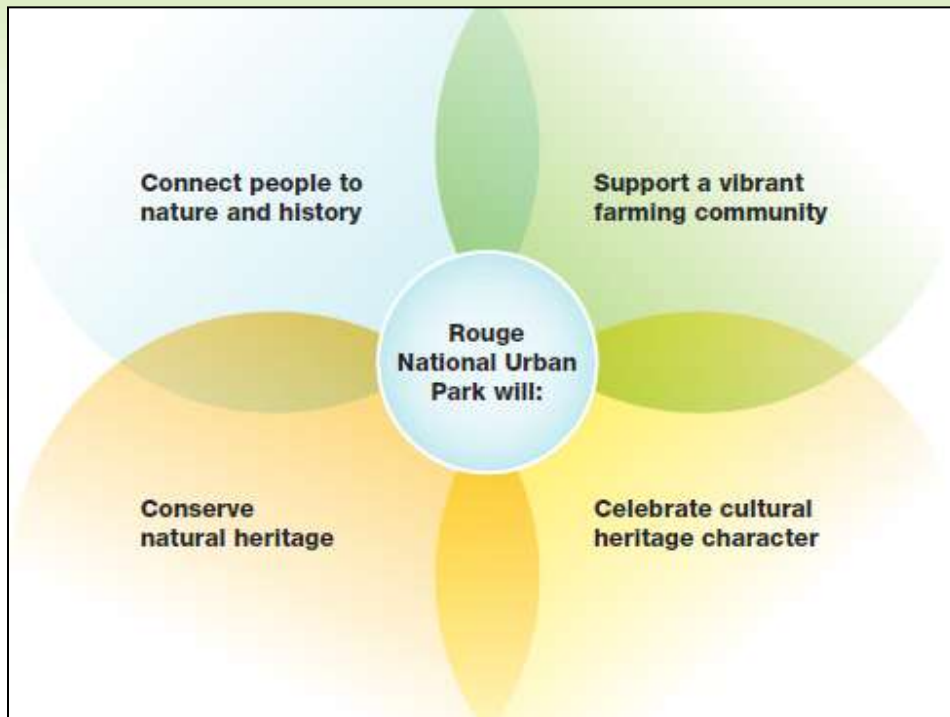


What This Means for Markham

- A protected area with national profile and designation
- Assurance of the highest level of protection for the park's significant cultural, natural, and agricultural values
- Access to a large protected area, which provides a strong sense of arrival and welcome and offers a connected trail network
- Investment by Parks Canada in park facilities and programming (e.g., visitor services, key community assets)
- Opportunities for public-private-community partnering (e.g., third-party delivery of services)
- A place for residents, including youth, to gather, recreate, enjoy, learn and protect



An Integrated Approach



Key Strategies

- Fostering a new way of thinking about protected heritage areas in an urban setting (***A Canadian First***)
- Managing change in support of a healthy and resilient park landscape (***A Dynamic, Cohesive Rouge***)
- Forging emotional and physical connections with the park (***A Connected, Relevant Rouge***)
- Nurturing strategic relationships to advance shared objectives (***Success Through Collaboration***)
- Facilitating the transition to Rouge National Urban Park (***Enduring Spirit of the Rouge***)



Management Plan Highlights

- Future involvement in park management through seats on committees and working groups
- Continued involvement in park planning, management and operations (e.g., committee and working groups, affiliated natural areas & green spaces, inventories and assessments, third-party delivery of services)
- Concentration of services to support the park communities in Cedar Grove & Locust Hill (e.g., investments in built heritage, diversified accommodation)
- Broader range of recreational, interpretive, and stewardship experiences for residents and visitors, in more areas of the park (e.g., cycling, equestrian, camping)
- New and improved trails connected to municipal trails and transit



Management Plan Highlights (con't)

- Agricultural diversity and local food initiatives to benefit local communities
- Sustainable, vital park lessee community built on community relationships, economic viability, diversification, and environmental stewardship
- A diversity of transportation options to and through the park (e.g., park shuttle)
- 3 of 6 welcome areas in Markham, including major node in Bob Hunter/Cedar Grove area
- Connection of park facilities and services to visitor-oriented infrastructure abutting the park (e.g., sports fields, accommodation)



Public Engagement

- June 23 to end of October 2014
- Open Houses: September 9 (Markham Museum), 10, 16, and 18
- Meetings with the Province, municipalities and stakeholders
- Community events (e.g. Markham Fair)
- On-line survey: parkscanada.gc.ca/rouge
- Parallel Processes with Markham:
 - Continued discussion on Supplemental Agreement
 - Due diligence related to land transfer
 - Establishment of governance structure

