

Park Development Concepts

for parklands adjacent to Markham Museum

Presentation to Development Services Committee
February 17, 2015

By Linda A. Irvine, Manager, Parks and Open Space
Development

Park Location



Background

- At a recent Budget Sub-Committee Meeting, staff was asked to make a presentation to Committee on the park concepts that have been prepared for the new park lands at 9390 and 9404 Highway 48, immediately to the north of the Markham Museum.
- These two properties were conveyed to the City in 2012 to satisfy parkland dedication requirements associated with residential condominium high rise development on Main Street Markham.

Existing Houses

- One non-heritage residential building was demolished
- The residential house that was 'designated' had to be moved due to widening of Highway 48.
- The heritage house was relocated to a corner of the property on an interim basis pending park development.
- The future use of the heritage building is still to be determined.

Context



Aerial of Park Property (1.47 ac / 0.6 ha)



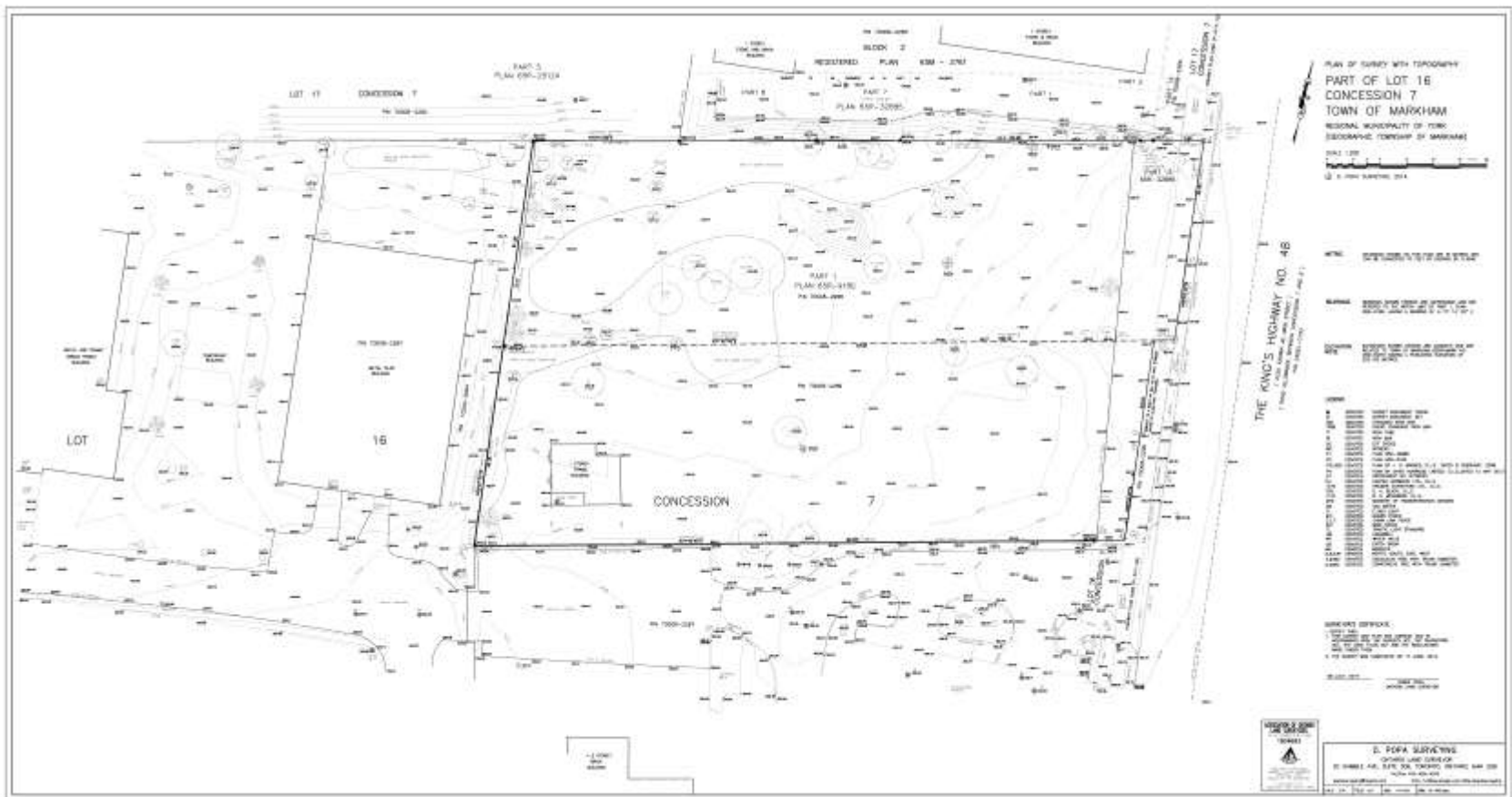
Adjacent High Rise Residential and Commercial Developments



Relocated Heritage House



Legal Survey



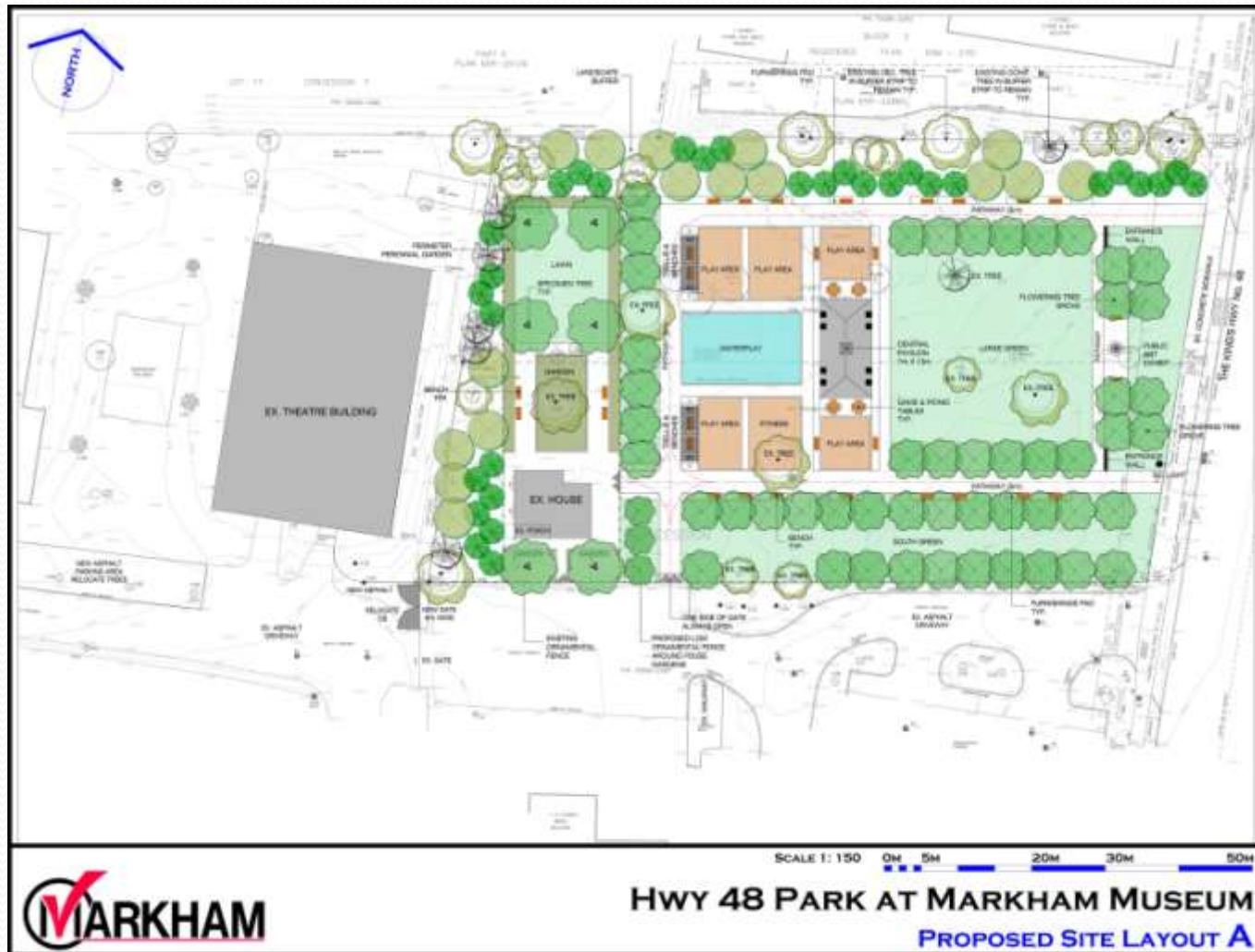
Proposed Park Programme

- Large central park pavilion
- Large “common green” area
- Junior / senior children’s playground areas
- Water play area
- Games/chess tables
- Outdoor fitness stations
- Shade trellises at playground
- Smaller lawn areas
- Seating; walkways; planting
- Public art area

Heritage House

- Use under discussion
- Location under discussion
- “Options Report” to Council for a decision on the future use and location of the heritage house
- ‘Park Concepts plans’ show the house, with front and back gardens, and separated from public park uses pending a decision on its future status.

Option A



HWY 48 PARK AT MARKHAM MUSEUM
PROPOSED SITE LAYOUT B

Precedent Images



Precedent Images



Precedent Images



Precedent Images



Precedent Images



Next Steps

- Community Consultation Meeting on February 25, 2015
- Report to Council on the future use and location of Heritage House
- Detailed design of park
- Working drawings and specifications
- Tender of park construction
- Park construction start targeted for fall 2015 (pending approval of construction budget)