



Report to: Development Services Committee

Date Report: March 1 2016

SUBJECT: Eureka Street and Fred Varley Drive Proposed Temporary Parking Prohibition

PREPARED BY: Binu Korah, Senior Manager, Development and Transportation, ext. 2849

RECOMMENDATION:

- 1) That the report entitled "Eureka Street and Fred Varley Drive Proposed Temporary Parking Prohibition," be received;
- 2) And that Schedule "C" of Parking By-law 2005-188 be amended to temporarily restrict parking on Eureka and Fred Varley Drive as defined in the report.;
- 3) And that the Operations Department be directed to install the appropriate signs to temporarily restrict the parking along on Fred Varley Dr and on Eureka Street as defined in the report;
- 4) And that the Parking Control Department be directed to enforce the parking prohibition upon installation of the signs and passing of the by-law;
- 5) And that the Director of Engineering be authorized to modify or extend temporary parking restrictions, signage or no truck stopping associated with 20 Fred Varley Drive construction activities on surrounding roads in consultation with Director of Operations and the Ward Councillor;
- 6) And that the cost incurred by the City of Markham to revise the parking be recovered from Tribute (Unionville) Limited;
- 7) And that staff be authorized and directed to do all things necessary to give effect to this resolution.

PURPOSE:

This report recommends temporary parking prohibitions on Eureka Street and Fred Varley Drive to address traffic operational safety requirements due to 20 Fred Varley Drive construction activities.

BACKGROUND:

In February 2013, the Ontario Municipal Board (OMB) approved the rezoning application by Tribute (Unionville) Limited to permit the development of a 4-storey mixed-use, commercial residential building comprising of 113 units on the subject lands. On June 2, 2015, Council endorsed the site plan of the proposed development.

In order to facilitate the construction of the 20 Fred Varley Drive development, Main Street, Fred Varley Drive, Eureka Street and Sciberras Road may be used as the truck routes to access and egress the site. Initially during demolition stage (end of February to end of March) the truck route will be via Eureka Street (northbound), Fred Varley Drive (eastbound) and Main Street

(southbound). Staff will monitor and adjust the truck routes as required to address any safety or operational issues.

Trade parking will vary during construction but during the forming and internal finishing stages, Tribute has advised they expect 45 trades will be on site requiring parking. This will be accommodated in designated areas until such time as the underground parking is available on site. Staff are currently finalising options for trade parking including use of the Stiver Mill site, Valley Municipal parking, Crosby arena and street parking.

In order to address safety concerns and minimize disruption to residents, Staff recommends parking restriction be approved on the following roads (Attachment A):

- No parking on Fred Varley Drive from Main Street to 34 Fred Varley Drive.
- No parking on Eureka Street from Highway 7 to the end of Eureka Street except for limited parking on west side of Eureka Street from Highway 7E to Pavillion St
- If monitoring reveals extensive trade parking on local roads, we request authority for the Director of Engineering to install temporary parking restriction signage on the following roads;
 - Fred Varley Drive from 34 Fred Varley Drive to Sciberras Road,
 - Fonthill Blvd,
 - Sciberras Road north of Fred Varley Drive.

In addition staff are finalizing with Tribute an external truck staging area so trucks won't park on local roads awaiting access to the site. No stopping bylaws may also be required for Eureka St and Fred Varley Dr.

The City will issue temporary parking passes for the abutting residents to park on these roads (if required).

FINANCIAL CONSIDERATIONS:

There are no financial implications to the City. Tribute (Unionville) Limited will be responsible for all cost to implement, maintain and revise the parking restrictions under the site plan agreement.

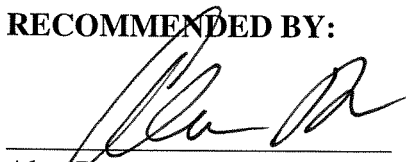
ALIGNMENT WITH STRATEGIC PRIORITIES:

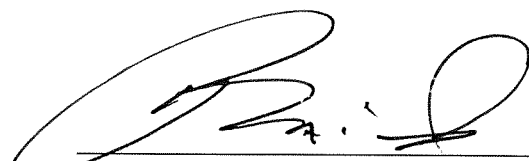
This report aligns with the community safety component of Markham's transportation strategic priority.

DEPARTMENTS CONSULTED AND AFFECTED:

Operations Department

RECOMMENDED BY:

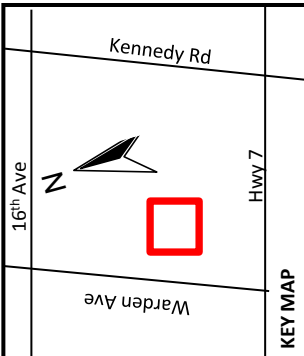

Alan Brown,
Director, Engineering


Jim Baird,
Commissioner, Development Services

ATTACHMENTS:

Attachment "A" – Eureka Street Proposed Parking Restriction Map

Attachment "B" – Proposed By-Law Amendment



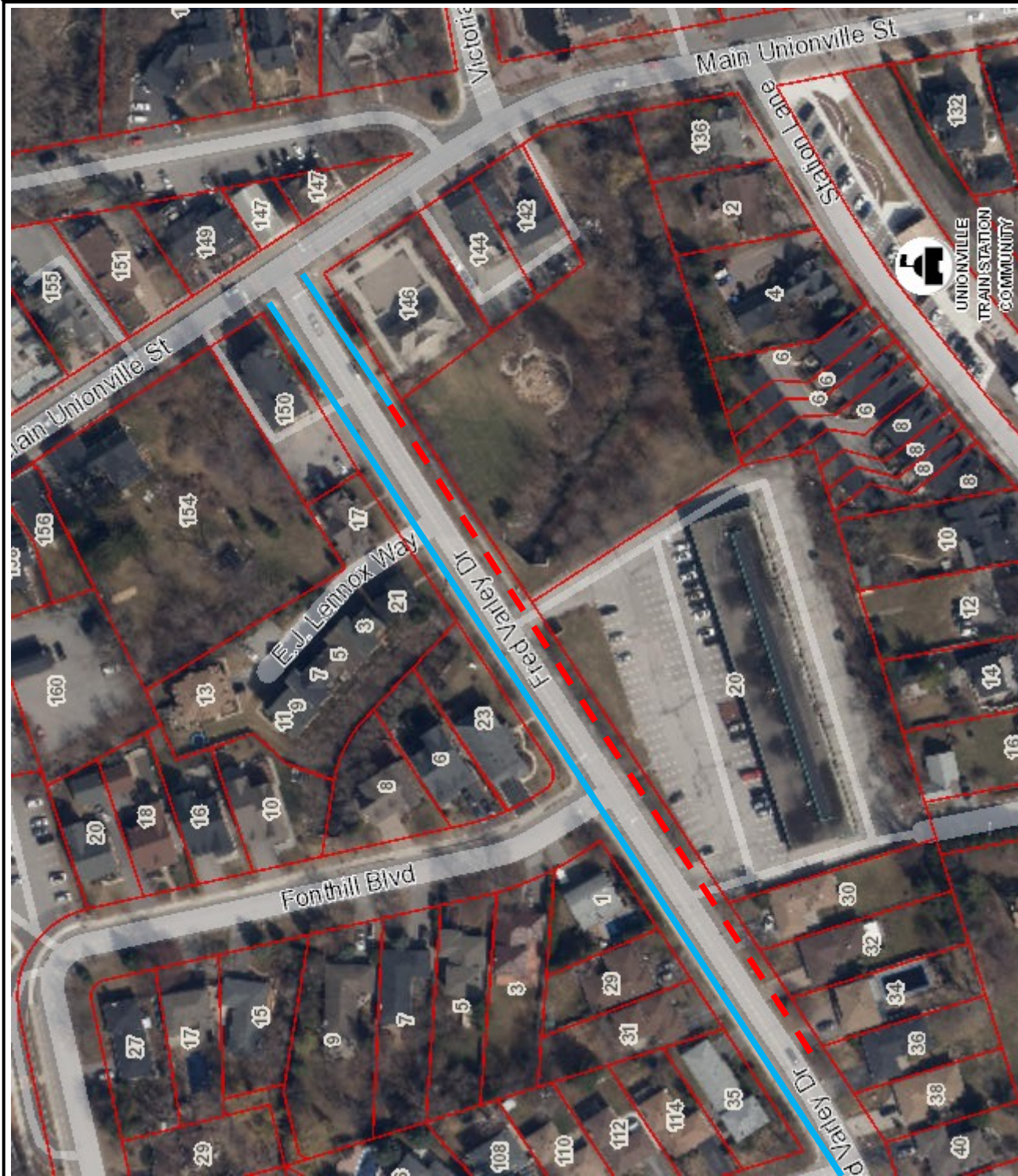
Existing
"No Parking"
Anytime
(signs not installed)

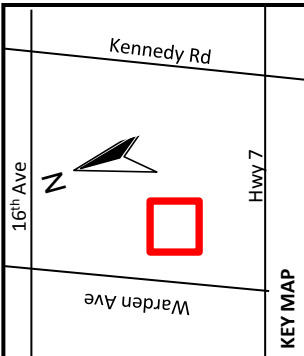
Proposed
"No Parking"
6AM-6PM
(from west lot line of
146 up to west
lot line of # 34)

Fred Varley Drive
Proposed "No Parking"
Restriction (6AM-6PM)

MARKHAM
Operations Dept.
February 2016

ATTACHMENT A





- Existing "No Parking" anytime
- Proposed "No Parking" 6AM-6PM
- Existing "1 Hr Restricted Parking" 9AM-6PM
- Proposed STOP sign

Eureka Street
Proposed "No Parking" Restriction (6AM-6PM)



Operations Dept.
February 2016

ATTACHMENT A





BY-LAW NUMBER _____

TO AMEND PARKING BY-LAW 2005-188

BE IT ENACTED BY THE COUNCIL OF THE CORPORATION OF THE TOWN OF MARKHAM THAT PARKING BY-LAW 2005-188 BE AND THE SAME IS HEREBY AMENDED AS FOLLOWS:

1. That Schedule “D” of Parking By-law 2005-188, pertaining to “Restricted Parking”, be amended by removing the following:

COLUMN 1	COLUMN 2	COLUMN 3	COLUMN 4
<u>STREET</u>	<u>SIDE(S)</u>	<u>BETWEEN</u>	<u>RESTRICTED PERIOD</u>
Eureka Street	East	A point 15m north of Highway 7 & a point 15m south of Pavillion St	9AM-6PM 1 Hr (Mon-Fri)
Eureka Street	East	A point 15m north of Pavillion St & the north limit of Eureka St	9AM-6PM 1 Hr (Mon-Fri)
Eureka Street	West	A point 15m north of Pavillion St & the north limit of Eureka St	9AM-6PM 1 Hr (Mon-Fri)

2. That Schedule “C” of Parking By-law 2005-188, pertaining to “No Parking”, be amended by adding the following:

COLUMN 1	COLUMN 2	COLUMN 3	COLUMN 4
<u>STREET</u>	<u>SIDE(S)</u>	<u>BETWEEN</u>	<u>PROHIBITED TIME OR DAYS</u>
Eureka Street	Both	North limit of Eureka St & Station Lane	6AM-6PM
Eureka Street	East	South lot line of # 31 & Pavillion St	6AM-6PM
Eureka Street	East	Pavillion St & Highway 7	6AM-6PM
Eureka Street	West	Anna Russell Way & Pavilion St	6AM-6PM
Fred Varley Drive	South	West lot line of # 146 & West lot line of #34	6AM-6PM

3. The By-law shall come into force and effect upon receiving the third reading by the Council of the City of Markham and also when authorized signs have been erected.

READ A FIRST, SECOND AND THIRD TIME AND PASSED THIS _____
DAY OF _____, 2016.

.

KIMBERLY KITTERINGHAM
CITY CLERK

FRANK SCARPITTI
MAYOR

ATTACHMENT “B”