



DESIGN PRESENTATION  
TO THE PUBLIC ART  
ADVISORY COMMITTEE,  
MARKHAM CIVIC CENTRE

# CHARITY

PERPETUATION  
— of —  
PERFECTION

May 27 2015

---

1. History	page 3
2. Design	page 7
3. Technical	page 14
4. Previous Work	page 18
5. Press	page 24

---

## PRESENTATION OUTLINE

DESIGN PRESENTATION TO THE PUBLIC ART ADVISORY COMMITTEE, MARKHAM CIVIC CENTRE





# HISTORY



CHARITY

PERPETUATION  
— of —  
PERFECTION



Aerial 1970



Aerial 2015



● PROPOSED  
SCULPTURE  
LOCATION

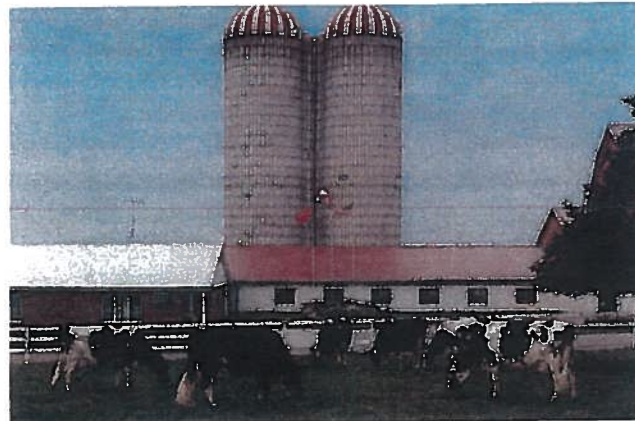
## SCULPTURE SITE: THEN & NOW

DESIGN PRESENTATION TO THE PUBLIC ART ADVISORY COMMITTEE, MARKHAM CIVIC CENTRE

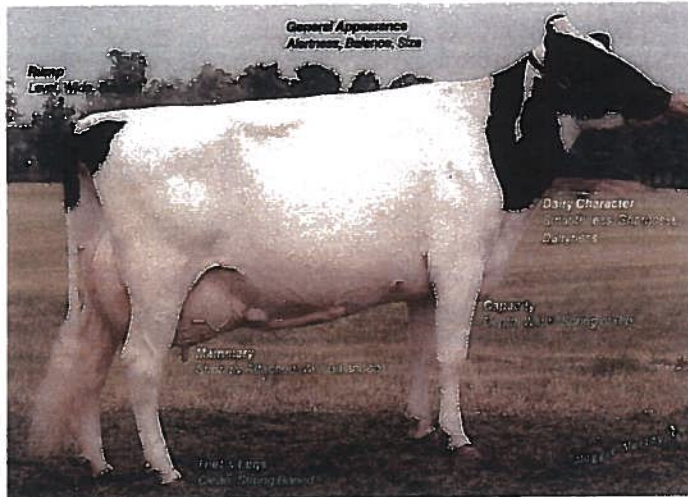




**Romandale Farms Limited**  
Romandale Farms Ltd owned by Steven & Bessy Roman was founded in King Ontario in 1950. The Farm moved to its Gormly location in 1954. The Farm moved to its current Markham location in 1957.



**Hanover Hill Farm**  
Hanover Hill Farm owned by Peter Heffering was founded in Port Perry Ontario 1974.



**True Type Holstein Cow - CHARITY**

On August 6th 1978 at the Brookview Farm in Fremont Ohio a calf was born. Little did anyone know that one day Brookview Tony Charity would become one of the breed's greatest cows - a cow of incredible perfection.

In 1981 Peter Heffering purchased Charity for \$47,000. Charity was moved to Hannover Hill Farm where her development began.



**Stephen Roman - Charity - Peter Heffering**

At a sale in July 1985 Brookview Tony Charity was sold to Romandale Farms Limited for \$1,450,000.

This set a new canadian record price for a female cow. Romandale and Hannover Hill Farms undertake the challenge of breeding better Holsteins very seriously. They own Charity in partnership.

## CHARITY: INCREDIBLE PERFECTION

DESIGN PRESENTATION TO THE PUBLIC ART ADVISORY COMMITTEE, MARKHAM CIVIC CENTRE







CHARITY with Offspring

## Portraits of Perfection

"No one holds a patent on perfection... but everyone would love to own a piece of it."



Charity appears as Grand and Supreme Champion at the 1980 World Dairy Expo in Madison, WI.



Charity takes her third consecutive Grand Champion award at the Royal Winter Fair in Toronto, 1981.



Charity is the supreme to be named Supreme Champion three times at the World Dairy Expo, 1982, 84, 85.



David Hirsch presents the award for Charity's Grand Champion win at the 1984 Royal Winter Fair.



In 1987 Charity became the first cow in history to be Grand Champion at all three U.S. National Shows.



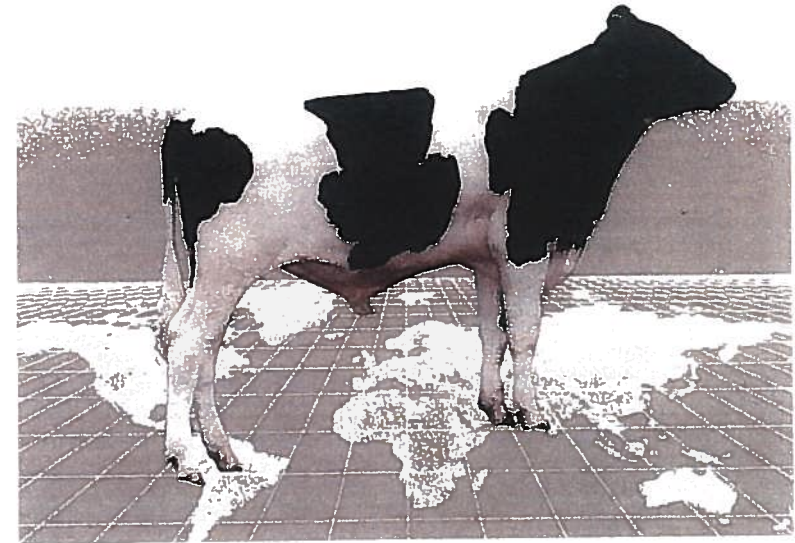
Charity is named Grand Champion in 1984 at the prestigious international exhibition in Fribourg, Canada.



George Brown presents the Grand Champion award at the 1993 Royal Winter Fair.



Admirers gather to present trophies to the superstar champion.



Hanoverhill Triple Crown-ET will be the first of Charity's sons to go through the genetic marketing process internationally.

## Multiple Awards

## CHARITY: HER LEGACY

DESIGN PRESENTATION TO THE PUBLIC ART ADVISORY COMMITTEE, MARKHAM CIVIC CENTRE

## CHARITY

PERPETUATION  
of  
PERFECTION

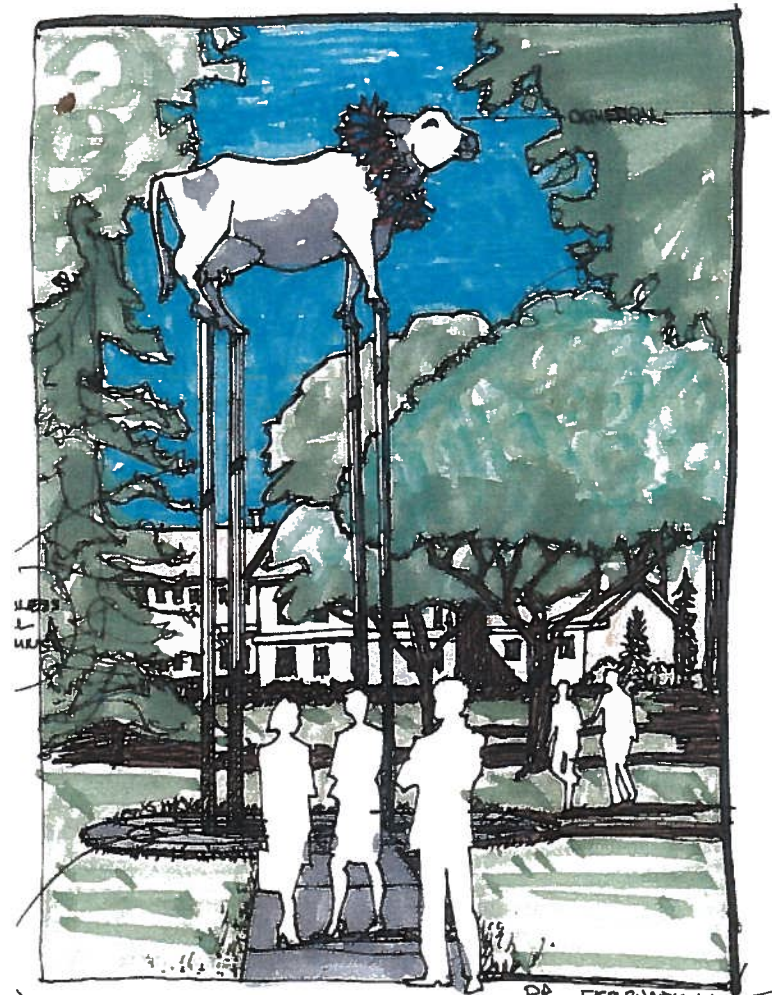
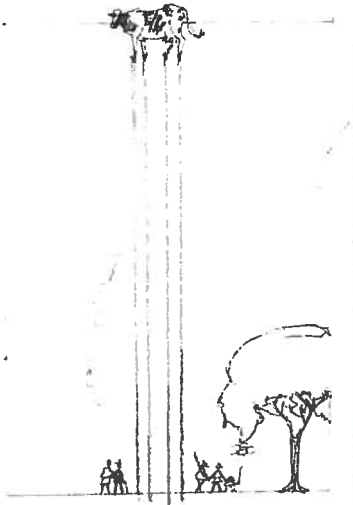
---

# DESIGN

CHARITY

PERPETUATION  
*of*  
PERFECTION





BACKGRANITE (SAME AS  
DAVERS (IN PARK □))

RB. FEBRUARY 14/15

CHARITY

PERPETUATION  
of  
PERFECTION

## DESIGN STUDY SKETCHES

DESIGN PRESENTATION TO THE PUBLIC ART ADVISORY COMMITTEE, MARKHAM CIVIC CENTRE





## PHOTOGRAPHS OF ACTUAL SCULPTURE

DESIGN PRESENTATION TO THE PUBLIC ART ADVISORY COMMITTEE, MARKHAM CIVIC CENTRE

CHARITY

PERPETUATION  
of  
PERFECTION



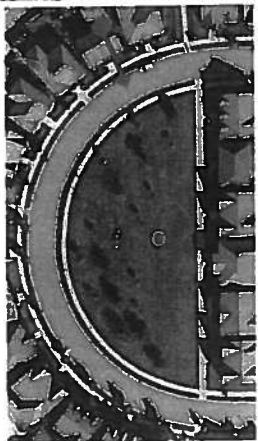
## PRECEDENT IMAGES

DESIGN PRESENTATION TO THE PUBLIC ART ADVISORY COMMITTEE, MARKHAM CIVIC CENTRE

CHARITY

PERPETUATION  
of  
PERFECTION





Key Map

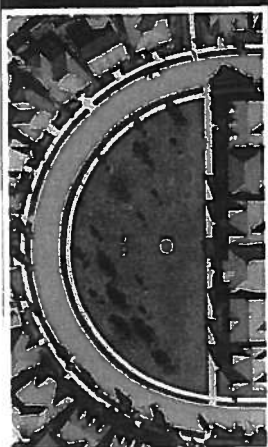
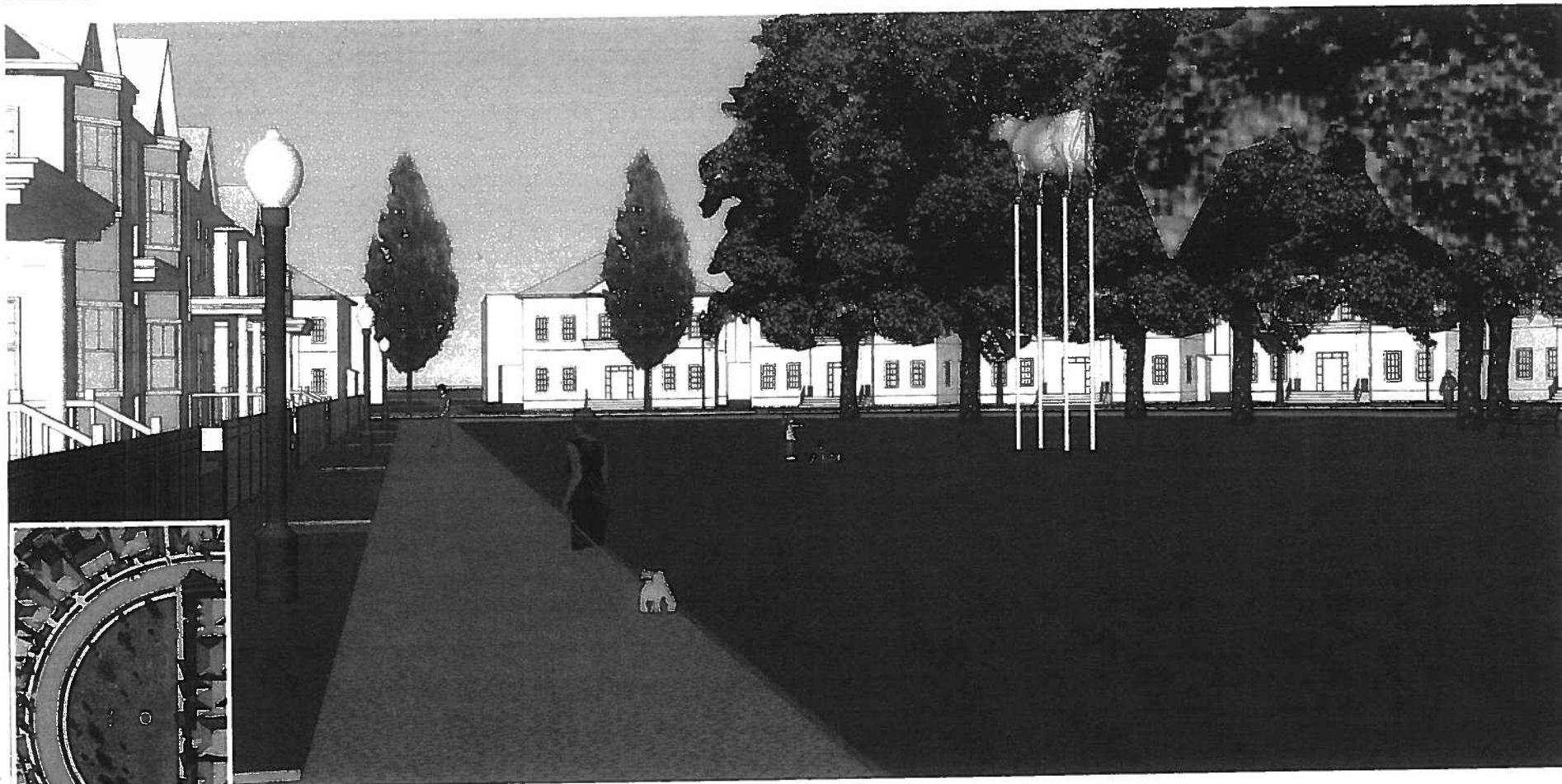


## AERIAL VIEW LOOKING SOUTH EAST

DESIGN PRESENTATION TO THE PUBLIC ART ADVISORY COMMITTEE, MARKHAM CIVIC CENTRE







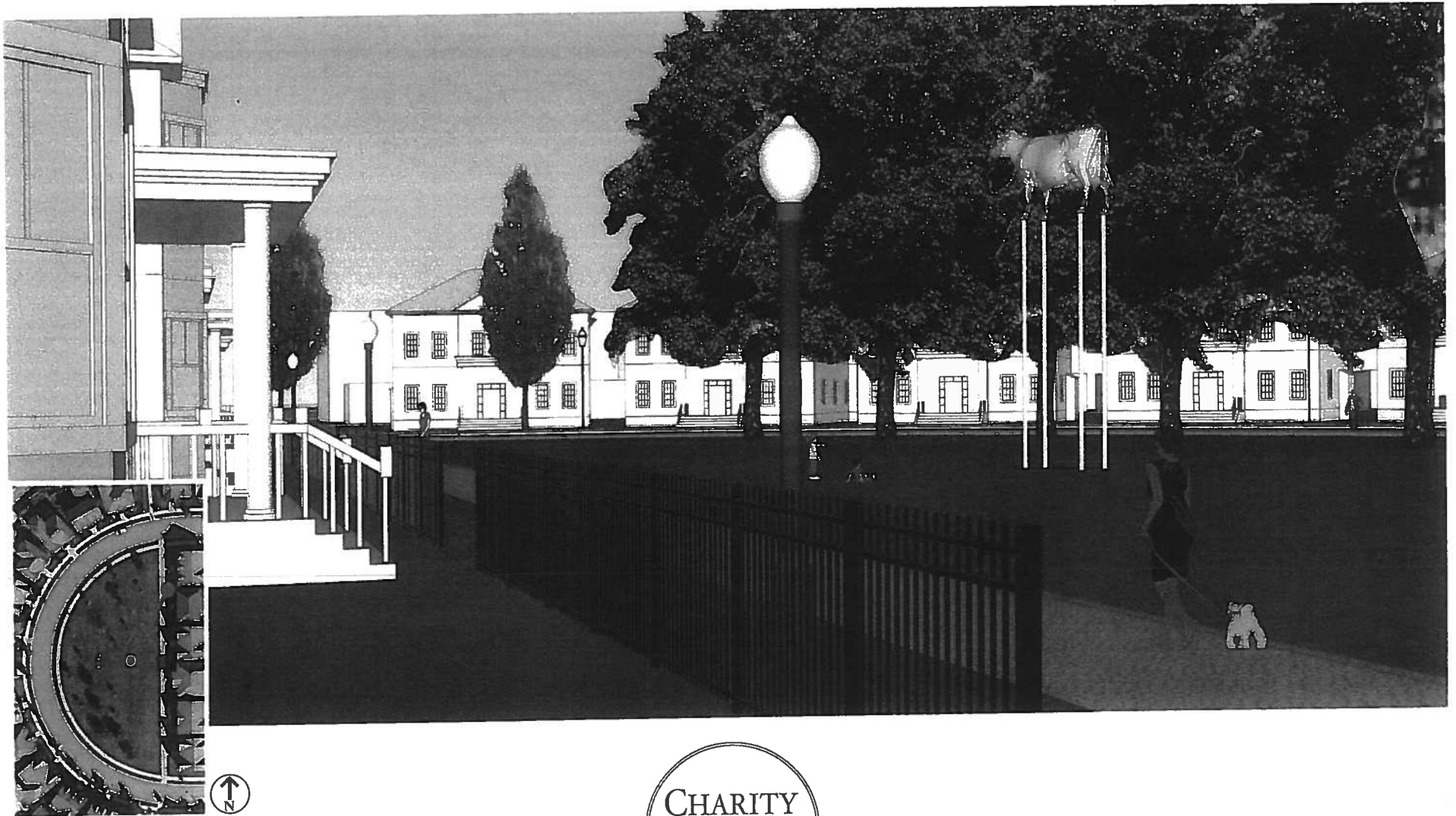
Key Map



## PERSPECTIVE VIEW LOOKING SOUTH

DESIGN PRESENTATION TO THE PUBLIC ART ADVISORY COMMITTEE, MARKHAM CIVIC CENTRE





Key Map



## PERSPECTIVE VIEW LOOKING SOUTH WEST

DESIGN PRESENTATION TO THE PUBLIC ART ADVISORY COMMITTEE, MARKHAM CIVIC CENTRE



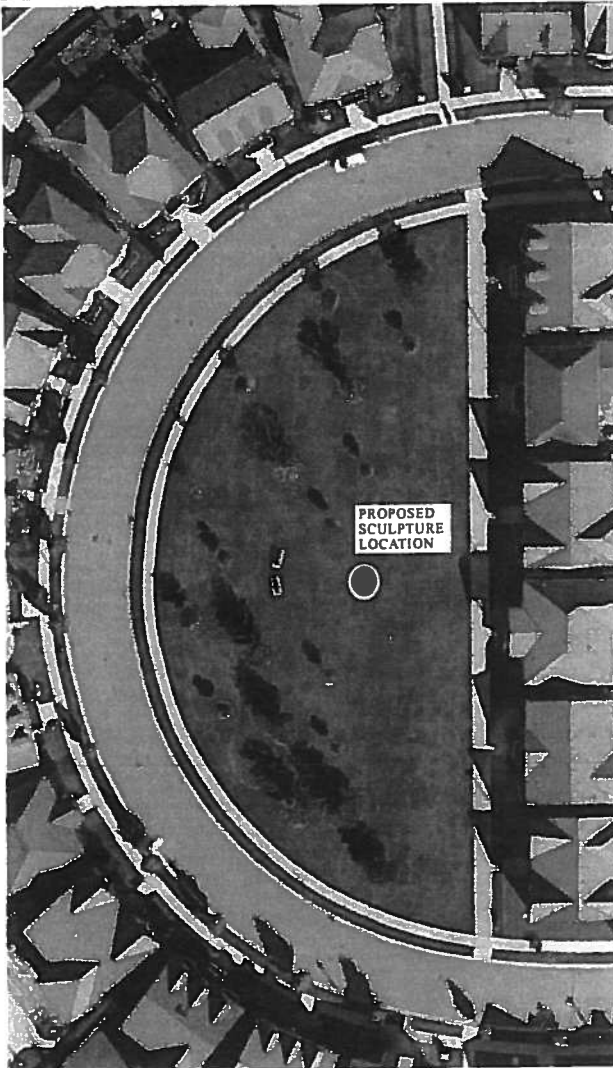


# TECHNICAL

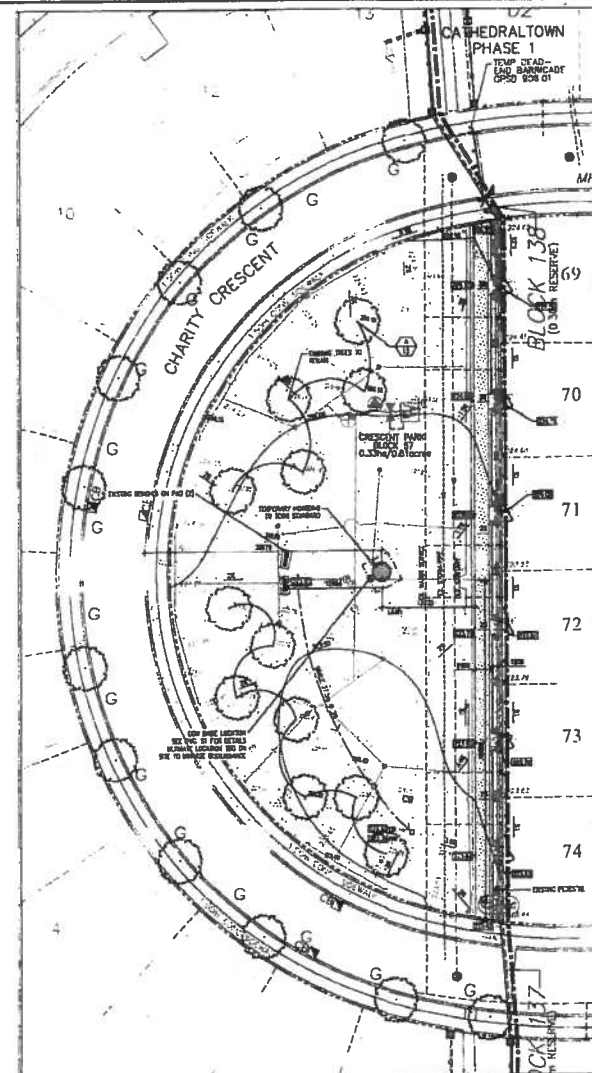
CHARITY

PERPETUATION  
— of —  
PERFECTION

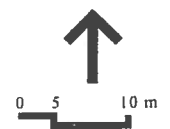




Aerial Photo



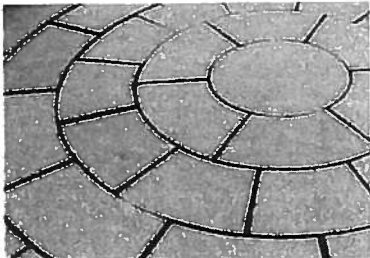
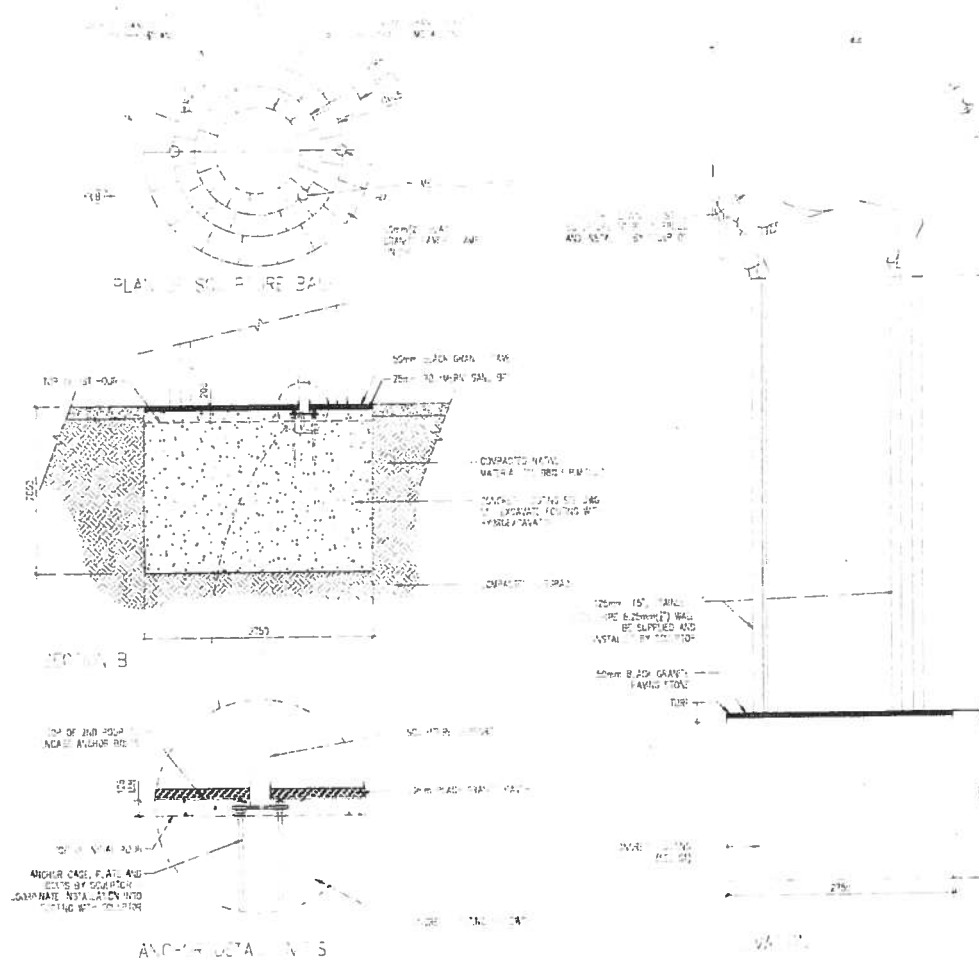
Layout & Grading Plan



## SITE PLAN

DESIGN PRESENTATION TO THE PUBLIC ART ADVISORY COMMITTEE, MARKHAM CIVIC CENTRE





Granite Paving



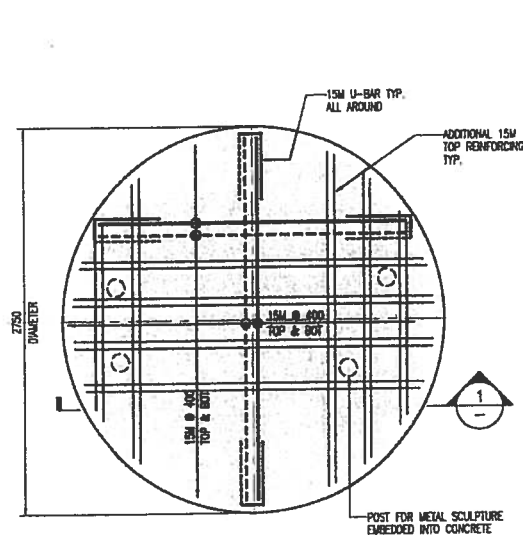
Anchor cage

## ANCHORING, FOOTING AND PAVING DETAILS

DESIGN PRESENTATION TO THE PUBLIC ART ADVISORY COMMITTEE, MARKHAM CIVIC CENTRE

CHARITY

PERPETUATION  
of  
PERFECTION



**PLAN VIEW**  
1:25

CONTRACTOR SHALL COMPLY WITH ALL SAFETY REQUIREMENTS OF "OCCUPATIONAL HEALTH AND SAFETY ACT AND REGULATIONS FOR CONSTRUCTION PROJECTS", THE LATEST ISSUE.

#### GENERAL NOTES

- 1/ DRAWING NOT TO BE SCALED, WORK TO DIMENSIONS ONLY.
- 2/ REPORT ANY DISCREPANCIES TO THE ENGINEER.
- 3/ CONTACT THE ENGINEER FOR ANY OTHER CONDITIONS THAN ILLUSTRATED ON THIS DRAWING.
- 4/ CONTRACTOR TO SUBMIT STEEL REINFORCING SHOP DRAWINGS FOR KEENWATIN GROUP REVIEW, PRIOR TO FABRICATION.
- 5/ SOIL BEARING CAPACITY TO BE 150 kPa. HAVE GEOTECHNICAL ENGINEER CONFIRM ON SITE.
- 6/ DESIGN LOAD: MAXIMUM OVERTURNING,  $M = 100 \text{ kNm}$   
WEIGHT OF CON,  $P = 54k$
- 7/ CONTRACTOR TO HAVE ENGINEER REVIEW PLACEMENT OF REBAR PRIOR TO POURING OF CONCRETE. PROVIDE MIN. 48 HOUR NOTICE.
- 8/ DESIGN IS FOR FOUNDATION ONLY.

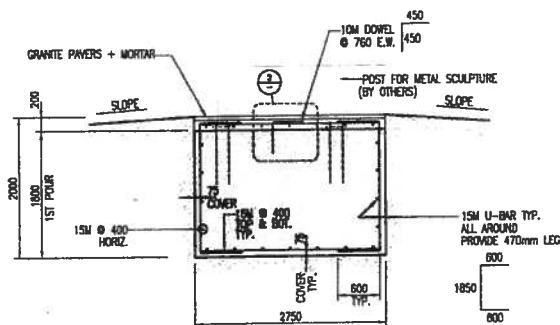
#### REINFORCING NOTES

1. REINFORCEMENT SHALL BE BILLET STEEL CONFORMING TO THE FOLLOWING STANDARD:
  - A. C.S.A. G30.18 M - GRADE 400 MPa - 10M AND LARGER
2. CONCRETE COVER:
 

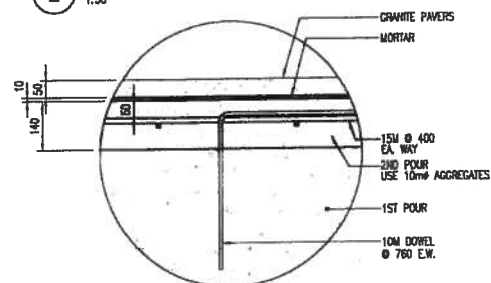
UNLESS NOTED OTHERWISE ON THE DRAWINGS, CONCRETE COVER IN mm (inches)

	EXPOSED	NOT EXPOSED
A. SURFACE PLACED IN CONTACT WITH GROUND	75 (3")	-
B. BEAMS, GIRDERS, COLUMNS AND PILES	50 (2")	40 (1 1/2")

PRINCIPAL BARS, Smaller than No.35



**SECTION 1**  
1:50



**DETAIL A**  
1:50

#### CONCRETE NOTES

1. ALL CONCRETE SHALL COMPLY TO REQUIREMENTS OF CSA A23.1-04
2. CONCRETE SHALL HAVE MIN. COMPRESSIVE STRENGTH OF 35 MPa (EXPOSURE C3) AND TO BE 5% TO 8% AIR ENTRAINMENT, 19mm AGGREGATES MAX 0.4 WATER TO CEMENT RATIO.
3. NO CALCIUM CHLORIDE, IN ANY FORM, IS PERMITTED IN ANY CONCRETE MAX.
4. CURING AND PROTECTION OF CONCRETE FOR HOT, COLD OR DRY WEATHER SHALL BE IN ACCORDANCE WITH CSA-A23.1-M94 - CHAPTER 21.
5. MINIMUM NET CONCRETE CURING PERIOD TO BE 7 DAYS.

DRAWING TITLE	
FOUNDATION DETAILS	
DESIGN	AS
DRAWN	BA
SCALE	AS SHOWN
DATE	OCT. 21/14

## FOOTING DETAILS

DESIGN PRESENTATION TO THE PUBLIC ART ADVISORY COMMITTEE, MARKHAM CIVIC CENTRE

CHARITY

PERPETUATION  
— of —  
PERFECTION



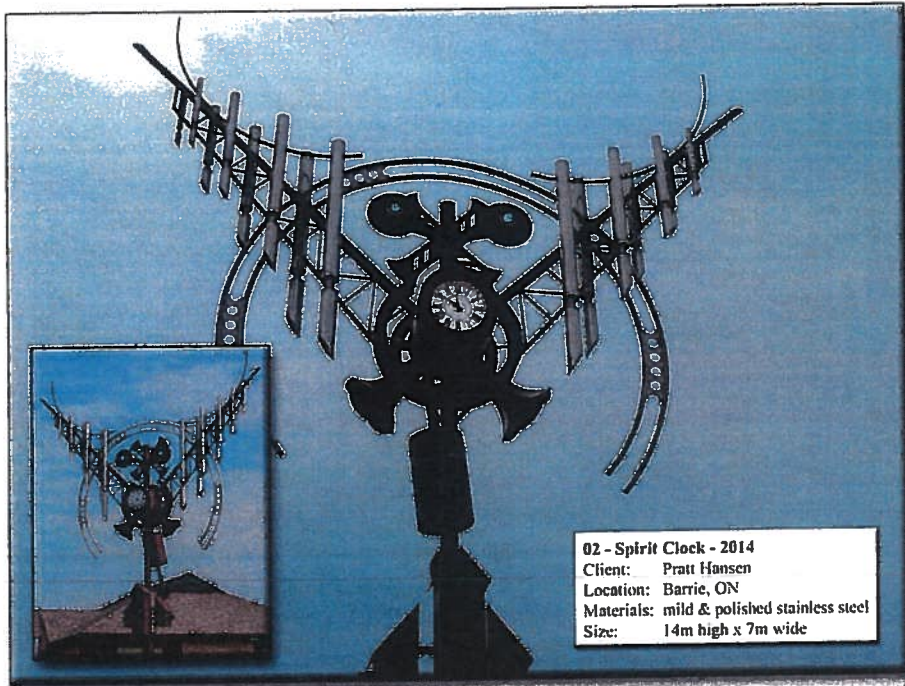
---



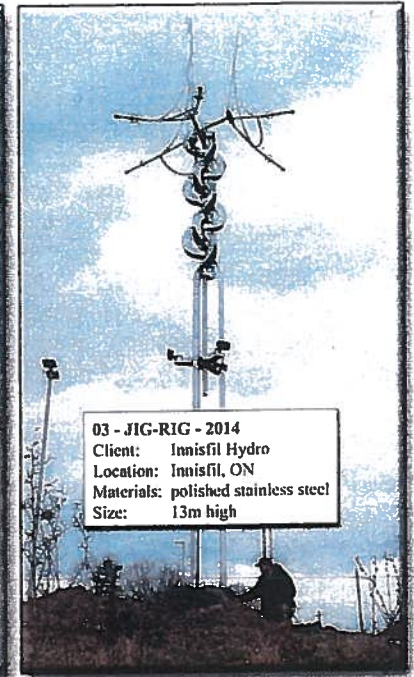
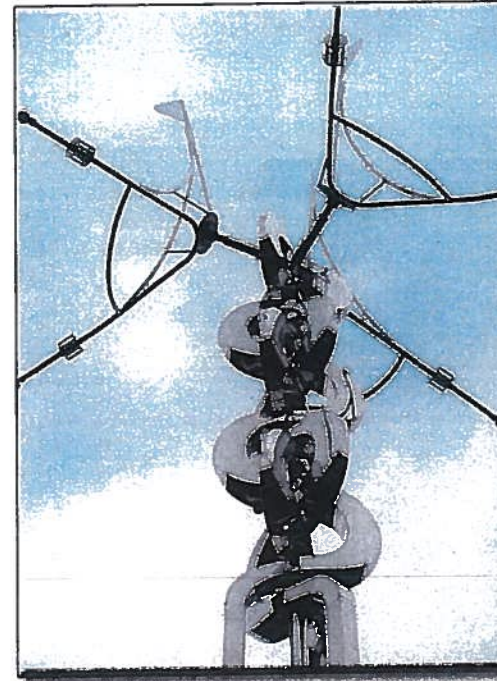
# PREVIOUS WORKS

CHARITY

PERPETUATION  
— of —  
PERFECTION



*Ron Baud*



*Ron Baud*

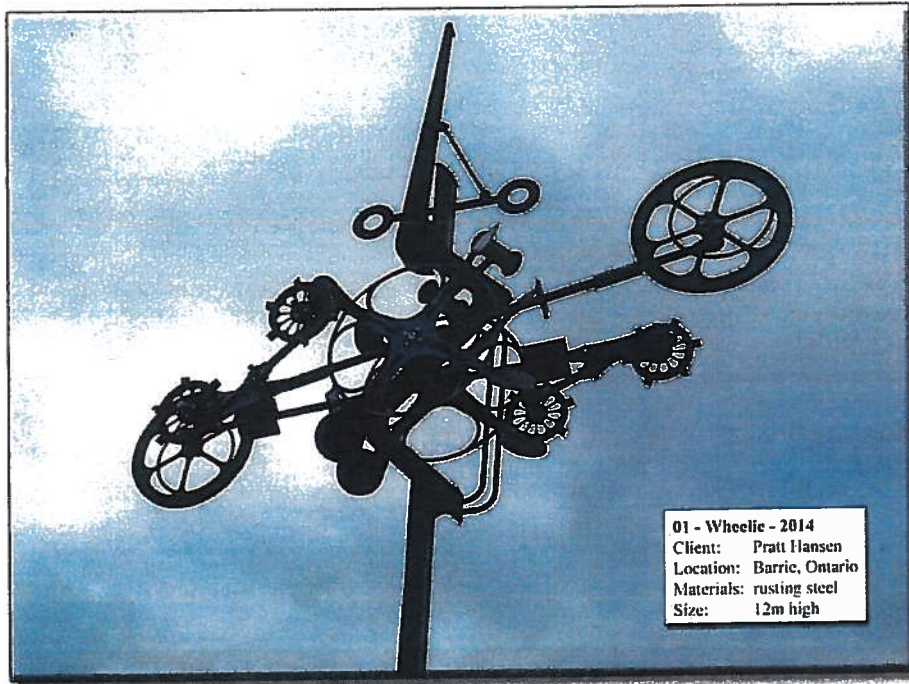
CHARITY

PERPETUATION  
 of  
 PERFECTION

## PREVIOUS WORKS

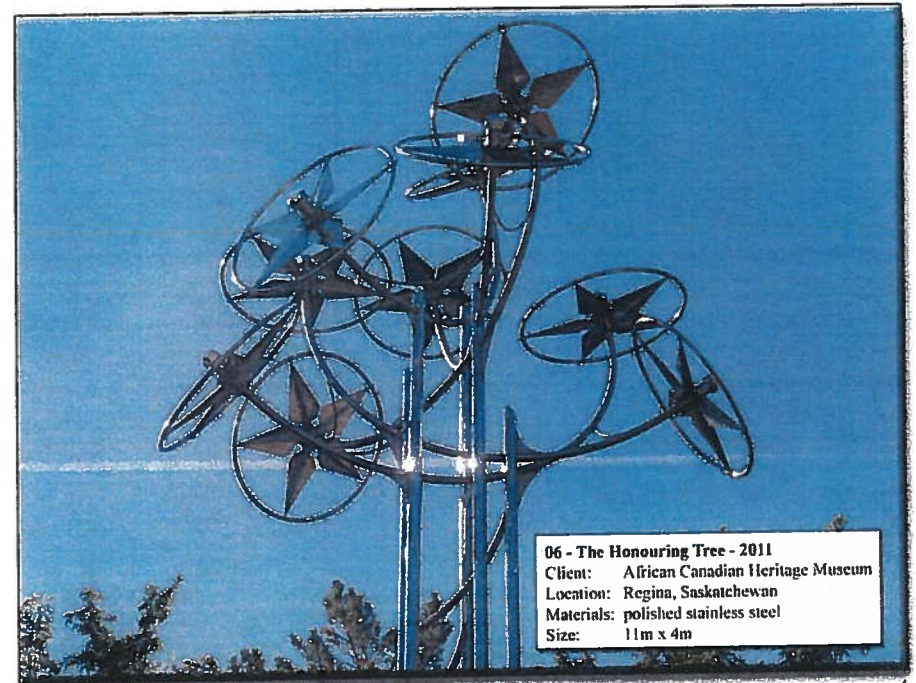
DESIGN PRESENTATION TO THE PUBLIC ART ADVISORY COMMITTEE, MARKHAM CIVIC CENTRE





01 - Wheelie - 2014  
 Client: Pratt Hansen  
 Location: Barrie, Ontario  
 Materials: rusting steel  
 Size: 12m high

*Ron Baird*



06 - The Honouring Tree - 2011  
 Client: African Canadian Heritage Museum  
 Location: Regina, Saskatchewan  
 Materials: polished stainless steel  
 Size: 11m x 4m

*Ron Baird*



## PREVIOUS WORKS

DESIGN PRESENTATION TO THE PUBLIC ART ADVISORY COMMITTEE, MARKHAM CIVIC CENTRE



07 - Dancing Tree - 2011  
 Client: private commission  
 Location: Horseshoe Valley, ON  
 Materials: stainless steel  
 Size: 10m x 5m x 5m

Ron Baird



08 - Nellie's Dream - 2010  
 Client: Toronto Botanical Gardens  
 Location: Toronto, ON  
 Materials: stainless steel  
 Size: 9m



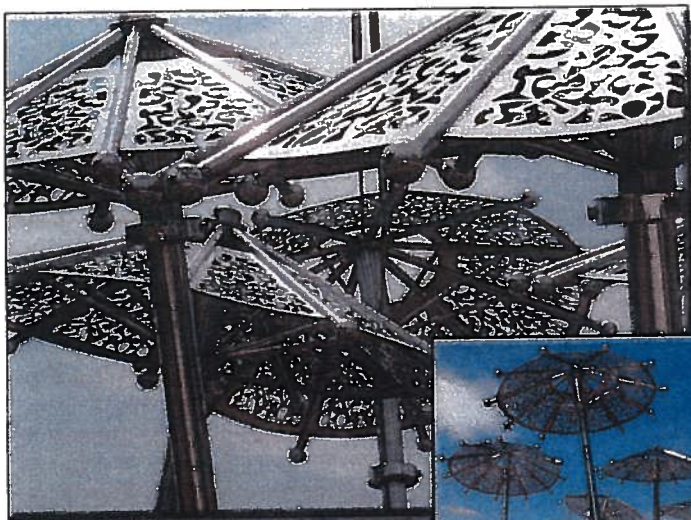
Ron Baird

## PREVIOUS WORKS

DESIGN PRESENTATION TO THE PUBLIC ART ADVISORY COMMITTEE, MARKHAM CIVIC CENTRE







**05 - Water Feature, Leitchcroft - 2013**  
 Client: Town of Markham  
 Location: Markham, ON  
 Materials: polished stainless steel  
 Size: 3.3m x 10 umbrellas



*Ron Baird*



**09 - Stepping Up - 2009**  
 Client: City of Red Deer  
 Location: Alberta  
 Materials: steel, stainless steel  
 Size: 16m high



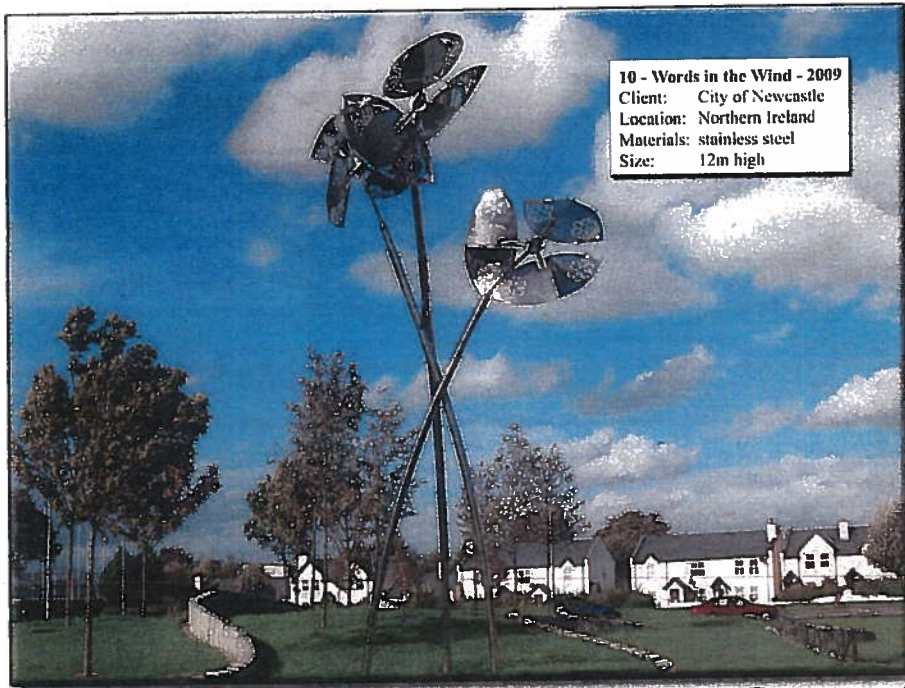
*Ron Baird*

CHARITY

PERPETUATION  
 of  
 PERFECTION

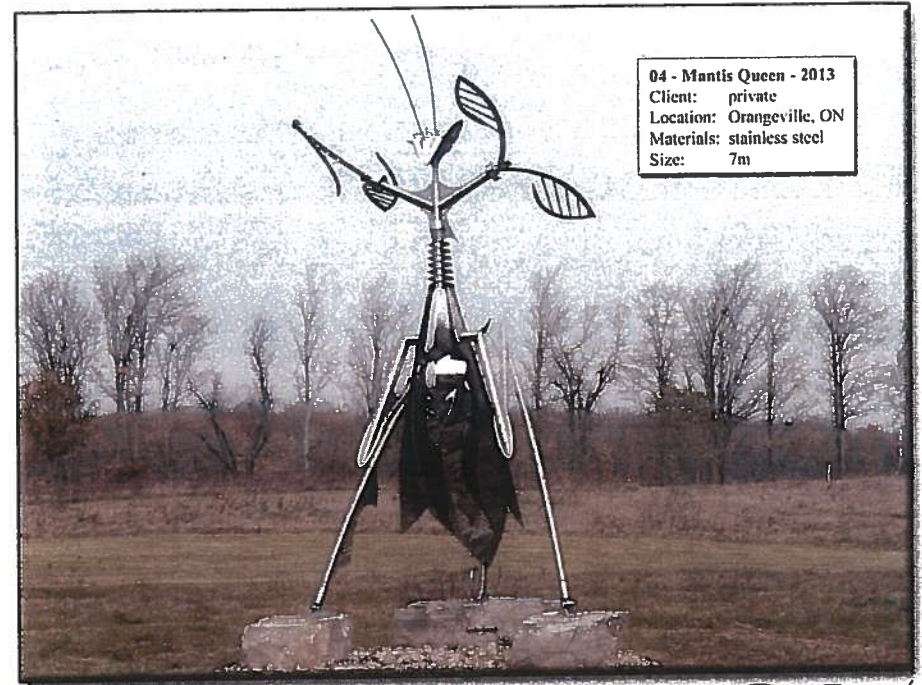
## PREVIOUS WORKS

DESIGN PRESENTATION TO THE PUBLIC ART ADVISORY COMMITTEE, MARKHAM CIVIC CENTRE



10 - Words in the Wind - 2009  
Client: City of Newcastle  
Location: Northern Ireland  
Materials: stainless steel  
Size: 12m high

Ron Baird



04 - Mantis Queen - 2013  
Client: private  
Location: Orangeville, ON  
Materials: stainless steel  
Size: 7m

Ron Baird

CHARITY

PERPETUATION  
— of —  
PERFECTION

## PREVIOUS WORKS

DESIGN PRESENTATION TO THE PUBLIC ART ADVISORY COMMITTEE, MARKHAM CIVIC CENTRE

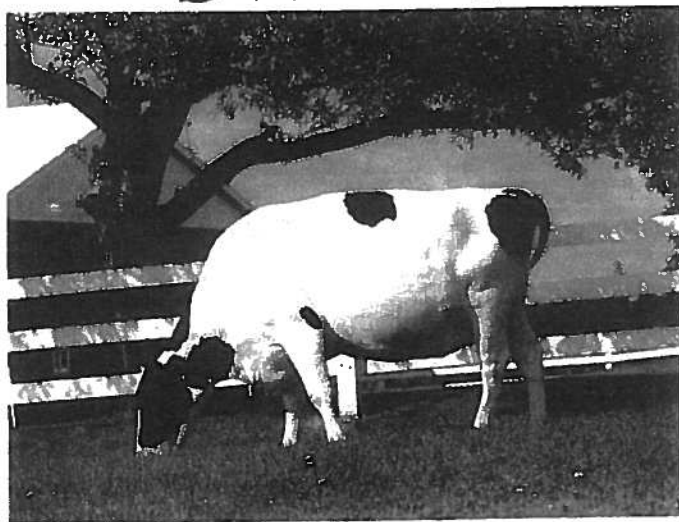
---

# PRESS





# SWEET



# CHARITY

ONTARIO'S AMAZING MILK MACHINE

BY PENELOPE BLACK

A steady rain drizzles down on a big cow standing in the barnyard of Hanover Hill Farms northeast of Toronto, but it seems to bother her not a bit. She is as placid and apparently as contented as good cows are supposed to be — and she certainly is a good cow.

Willis Conrad, the herd manager at Hanover Hill, points out her impressive qualities. "She's tall," he says, "and she has good sharpness of shoulders — but she has a smoothness, a strength of loin on top, depth of ribs, flatness and width of rump, a high, wide rear udder, well attached." He

goes on, speaking of characteristics obviously important, but generally beyond the appreciation of most city people. But the cow's price tag is impressive for anyone, country or city. She was sold at auction last summer for \$1,450,000.

Her name is A Brooklyn Tony Charity, and she is, quite simply, the most expensive cow in the world.

City people are usually unaware that, when you see those black-and-white cattle beside the concession roads in the rural areas (they're Holsteins, and most city folk do know that), you're looking at the finest cattle anywhere. The top cows are not natives of Alberta

or Texas and do not belong to some exotic breed in Argentina or Italy. They're the handsome, sturdy and extremely productive dairy cattle concentrated around Toronto. Holsteins are big, cow big business, and if you think \$1,450,000 is ridiculous, consider that one of Charity's offspring, a nine-month-old heifer, a young cow, sold recently for \$350,000. Consider, too, the number of offspring Charity can produce. The process of delivering calves has become relatively fast and simple. Today, a cow is artificially impregnated by a top bull, then the embryos, perhaps five or six of them, are flushed out and transplanted into other

cows. These surrogates don't have to be special; they don't even have to be Holsteins. So, in one year, Charity can easily provide a dozen embryos — a dozen offspring.

Charity is half owned by Peter Heffernan, who operates the internationally known Hanover Hill Holstein farm, and half by Stephen Roman, president of Denison Mines and operator of Romandale, another farm near Toronto whose name is known to cattle breeders around the world. Heffernan put Charity up for auction in July, 1985, but he had an agreement with Roman that said in effect that, if Roman bid on Charity, and got her, Heffernan would buy back a one-half interest in her. Heffernan liked the idea of the powerful marketing thrust that Hanover Hill and Romandale would have together, and both men liked the thought of hedging their bets a little. "I like to spread my risks," Roman says.

Heffernan originally bought Charity at a sale in the United States in 1981 for \$47,000. Now Charity leads a pampered life at Hanover Hill, where she gets the best of everything, including hay brought in from California. All that sunshine gives the hay more protein



in and — this is important — Charity likes it. Eating is probably her favorite pastime, Conrad says, and for some reason she also likes the rain. "And she's smart," Conrad says with a note of pride. Roman tells of visiting her one time and watching while a couple of handlers tried to get her out of her stall. The move meant that Charity would have to take several steps across a slippery surface, Roman recalls, and she wouldn't budge. Finally, the handlers put down a sprinkling of sand and, without any coaxing, Charity stroled out of her stall.

Every day, she eats "a little corn"

— about 15 pounds; 45 pounds of high-moisture "havlage"; 12-15 pounds of plain hay; and about 45 pounds of grain. In return, she gives immense amounts of milk. One year, she gave 39,000 pounds of it, and Conrad hopes she will set a record (the annual record is 55,000 pounds). Charity, now eight years old, the age when cows' production is high, weighs well over a ton when she's not milking and about 1,800 pounds when she is, because "milking means stress," Conrad explains.

She is also something of a celebrity and when cattlemen visit Canada from Germany or Brazil or wherever, they'll detour to Hanover Hill for a look at Charity. Heffernan welcomes them in a large, handsome, pine-paneled office that is crammed with trophies his herd has won at countless shows — cups, clocks, trophies, mugs, just plaques, pennants, ribbons — many representing Charity's triumphs. A judge at one show described her as "incredible perfection," and when Heffernan led her into the auction ring just before her record-breaking sale, the assembled experts rose and gave her a standing ovation.



that produced the embryos, and the breeders just re-implant them in Brazil or Japan or wherever, and they know — even if the recipient cows are foreign — that their calves will be excellent specimens.

The success of Canadian Holsteins is the result of several developments. The first happened about 75 years ago when Holstein breeders in Canada headed off along a different route from European breeders. The Holstein had generally been a dual purpose animal — beef and milk — and the North Americans began concentrating on milk, because it paid better. The ani-

mals that resulted became what breeders everywhere

Later, the Americans tried to go all-out for milk production. Canada, with its quota system, concentrated on production and more toward a higher butter fat content. The southern Ontario river became broader and surlier than American cows, not a angular. And very important, they retained much of the shape of European Holsteins, so European buyers coming to North America felt more comfortable with the Canadian herd.

With extraordinary haste the Canadians made sure the buyers came. Just after World War II, three Canadians, then a top executive with the Holstein Breeders' Association, launched a drive that put Canadian Holstein breeders out in front. Clements now "to realize the help of Canada has made commissioners around the world, and travelled from country to country, before even we knew about Canada's fine cattle."

Today, the emphasis has shifted, and Canadian Holstein breeders are putting more than one value on milk production — a person's happiness is seen on cows that give stress of milk



— but not, like the Americans, in the point of overdoing production. "The Americans are in a lot of problems," says Joe Snyder, secretary-manager of the Ontario branch of the Canadian Holstein Breeders' Association. "They have a buy-out plan whereby the government buys cattle." And Heffernan says, "The price of milk is so low in the States that it's almost impossible to stay in the business."

Dave Houch, herd manager at Romandale Farms, points out that Charity represents both American and Canadian Holsteins. She was born in the U.S., in Pennsylvania, but her bloodlines on both sides straddle the border. Heffernan and Roman are quiet men; neither is the type to gush. But when they talk about Charity, the enthusiasm and pride come pouring out. "She has never been beaten in the show ring," Heffernan says. "She's won all the major shows, three times champion at the Royal Winter Fair, three times supreme champion at the World Dairy Exposition in Madison, Wisconsin, and she's."

"She is a tremendous cow," says Roman. "As far as the show ring is concerned, I don't think there's ever been any cow that came down the pike that can compare to Charity."

Charity takes it all in her stride. She likes people and she seems to get along well with the other cows. "She's a very nice individual to work with," Heffernan says. Conrad calls her "the nicest mannered cow I've ever worked with." He looks at the big, solid Holstein with obvious fondness. "A good cow should look like a tank," he says. "And she looks like a tank. I consider her to be the perfect cow." The ram comes down steadily, and Charity stands there happy — all \$1,450,000 of her. ▼

18 LEISURE WAYS

PHOTO: HUBERT BRINCHITT

LEISURE WAYS 15

Article in "Leisure Ways" Magazine in 1986 by Penelope Black

## CHARITY

PERPETUATION  
— of —  
PERFECTION

PRESS

DESIGN PRESENTATION TO THE PUBLIC ART ADVISORY COMMITTEE, MARKHAM CIVIC CENTRE

25





DESIGN PRESENTATION  
TO THE PUBLIC ART  
ADVISORY COMMITTEE,  
MARKHAM CIVIC CENTRE  
MAY 27 2015

# CHARITY

PERPETUATION  
— of —  
PERFECTION

THANK YOU



Romandale Farms Limited

Ron Baird

NAK   
design strategies