



Report to: Development Services Committee

Report Date: May 23, 2017

SUBJECT: Rose Way Proposed Parking Prohibition (Ward 4)

PREPARED BY: Dan Ahir, Engineering Technologist, ext. 2736
David Porretta, Supervisor, Traffic Operations, ext. 2040

RECOMMENDATION:

- 1) That the report entitled "Rose Way Proposed Parking Prohibition," be received;
- 2) That Schedule "C" of Parking By-law 2005-188 be amended to prohibit parking on the north side of Rose Way from Elm Lea Street (east intersection) to the southwest corner of #33 Rose Way, between the hours of 7:00AM - 3:00PM, Monday - Friday;
- 3) That the Operations Department be directed to install the appropriate signs at the subject location funded through Engineering Department capital account # 083-5350-17162-005;
- 4) That the Parking Control Department be directed to enforce the parking prohibition upon installation of the signs and passing of the by-law;
- 5) That staff be authorized and directed to do all things necessary to give effect to this resolution.

PURPOSE:

This report recommends a parking prohibition on the north side of Rose Way, in response to residents' concerns associated with on-street parking generated by patrons of Markham-Stouffville Hospital.

BACKGROUND:

Located west of 9th Line and north of Highway 7, Rose Way is classified as a local residential street with an average daily traffic volume of 875 vehicles. Parking is currently prohibited on the south side of the subject portion of Rose Way. A sidewalk is provided on the south side of the subject portion of Rose Way, between east and west intersections of Reginald Crescent.

Street parking on Rose Way is not compromising traffic safety

In 2015, Traffic Operations staff was contacted by residents regarding ongoing traffic operations concerns related to vehicles consistently parking on north side of Rose Way. Traffic Operations and Parking Control staff conducted several on-street assessments of the parking activity on Rose Way. Results concluded that parking activity is regularly occurring on the north side of Rose Way, but is not contributing or adversely impact traffic operations. Also, implementing restrictions on the north side of Rose Way would also apply to residents and their guests. As such, Traffic Operations staff did not support prohibiting parking on the north side of Rose Way.

A resident petition is requesting parking restrictions on the north side of Rose Way

In March 2017, a petition from Rose Way residents was received by the Ward 4 Councillor (see Attachment "A"). The petition requested that parking be prohibited on the north side of Rose Way. The rationale outlined in the petition speaks to resident concerns including increased risk of home break-ins, littering, difficulties maneuvering into and out of their driveways due to poor sightlines, impacts to emergency services, waste removal services, winter maintenance activities, pedestrian safety, access to community mailboxes and reduction of property values. The residents confirm that parking activity is not associated with their residences. Rather, visitors of Markham-Stouffville Hospital are parking on Rose Way in an attempt to avoid paying costly parking fees at the hospital.

OPTIONS/ DISCUSSION:**Visitors to Markham-Stouffville Hospital are parking on Rose Way**

In response to the petition, Traffic Operations staff conducted additional site observations on Rose Way and confirmed that parking activity is consistent with what was observed in 2015 (see Attachment "B"). While the level of activity is not unusual for a local residential street, the parking activity appears to be generated solely by hospital patrons who choose to avoid paying parking fees at the hospital. Therefore, while the parking activity on the north side of Rose Way does not affect traffic operations on Rose Way, it is compromising the residents' quality of life as expressed by the residents.

City staff support the recommendation identified in the resident petition

Traffic Operations staff support the request identified within the petition to prohibit parking on the north side of Rose Way, between the hours of 7AM - 3PM, Monday-Friday (see Attachment "C"). It is expected that the proposed prohibition will help mitigate the concerns identified in the petition. However, it should be noted that the restriction could displace the parking activity to adjacent local roadways and has the potential to spread the issue. While there have not been any concerns about hospital parking on these streets currently, City staff will need to monitor such activity and consider additional restrictions if they cause traffic operations issues or become a nuisance to residents.

FINANCIAL CONSIDERATIONS:

The cost of materials to install the signs is included for in Engineering capital account # 083-5350-17162-005. On-going maintenance costs will be included in future Operations Department budgets.

HUMAN RESOURCES CONSIDERATIONS:

Not applicable.

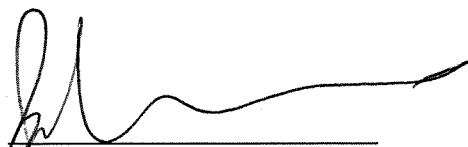
ALIGNMENT WITH STRATEGIC PRIORITIES:

The recommendations identified within this report align with the strategic focus for a Safe and Sustainable Community, through the ongoing management of the City's transportation network.

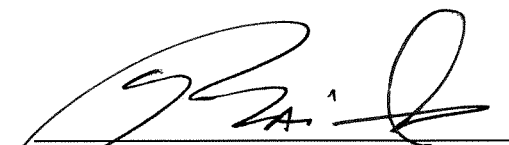
DEPARTMENTS CONSULTED AND AFFECTED:

Operations Department has been circulated this report, recognizing operations impacts associated with the additional regulatory signs.

RECOMMENDED BY:



Brian Lee, P.Eng
Director, Engineering



Jim Baird, M.C.I.P., R.P.P.
Commissioner, Development Services

ATTACHMENTS:

- Attachment "A" – Rose Way Resident Petition
- Attachment "B" – Rose Way On-Street Parking Photos
- Attachment "C" – Proposed Parking Restriction Map
- Attachment "D" – Proposed By-Law Amendment

Attention Ward 4 Councillor Karen Rea

March 1, 2017

History:

Rose Way was a quiet street primarily used by residents and their visitors. It is not a direct through street. It is located on the West side of Ninth Line just north of Highway 7.

Since the expansion of Markham Stouffville Hospital the Street was opened up on the East side of Ninth Line to assist traffic to the hospital. The street has become inundated with parked cars.

Until the lights at the intersection of Rose Way and Ninth Line were erected it did get used as a through street by many as the Hwy 7 & Ninth Line lights were very busy. Cars were backing up on Ninth Line.

The new lights alleviated this action to some degree. It is still used but as it is not a direct through street. Many now wait for the lights to change as it takes less time than to go through Rose Way and the streets to get to Hwy 7.

Parking problems.

As MSH charges for parking many people park their cars on the West side of Ninth to avoid paying the fees. This affects Rose Way from Ninth to halfway up the street on the north side (as there is no parking on the south side of the street. The people who park here to avoid the fees will only wish to walk a certain distance and that goes from the intersection of Elm Lea & Rose Way to 27 Rose Way. Further up the street is not affected by this issue. The section from Ninth Line to # 11 has no parking signs and a fire hydrant so cars only park there at their risk. The cars come prior to 7am on many days with some staying until after 7pm.

Reasons why this is now a big problem.

Safety issues.

1a. With so many break ins now in Markham we now no longer know to whom these cars belong

Therefore watching out for and knowing our neighbours cars is no longer viable. We do not know if there are people parking with the intent to break in. So managing a Neighbourhood watch would be extremely difficult.

b. Driving out from our driveways can be difficult with so many vehicles obstructing the view. Many cars park so close to both sides of the driveway. It can be dangerous.

c. Twice a day morning and mid afternoon many school buses pick up and drop off the children in our area on Rose Way. They stop in front of #17 & #19 These cars cause problems.

2. Garbage pick up on Fridays becomes difficult. It has been seen on many occasions that getting to the bins can become difficult.

3. Snow ploughing our roads has proven in the past to be a problem as the plow has to go around these cars. This section of Rose Way is a secondary road.

4. There is a fire hydrant outside # 11. Even though there is a by- law that can be enforced, people still on occasion park there.

5. With the community mailbox located opposite #21 & #23 Rose Way, it is difficult to park and pick up the mail.

6. There are no sidewalks from Ninth Line until Reginald Cres, and so people walking their babies in strollers,

children riding their bikes and people out walking their dogs have no option but to walk in the middle of the road around these parked cars.

7. Plus when houses are placed for sale, curb appeal is an important factor. Many potential buyers could be reluctant to purchase a house on this street due to the large number of cars parked on the road. One day recently there were 9 cars parked from #11 to #25 and that is only in front of 5 houses. As well, 6 were in front of #15, #17 and #19.

8. On many occasions people drop their garbage on the front lawns, having no respect for these properties.

9. Many people taking courses at the hospital, park on Rose Way. As well, car pooling occurs to avoid paying hospital parking fees..

Our street has become a parking lot.

We understand that we cannot have all day no parking as the south side has no parking already.

Therefore, we are asking for no parking restrictions between the hours of 7am to 3pm. Monday to Friday.

The people who agree are as follows: #15 Karen Cassells, # 17 William John Keay, Eira Keay, #19 Suzanne Vaisanen, Marc Vaisanen, #21 Sal Liberto, #23 Hash Mistry, #25 Josh Martin, Shelley Moscrop, #27 Jeff Griffin, Kathleen Griffin

11 VIGNESWARAN P.

NAME

SIGNATURE

Karen Cassells

William John Keay

Eira Keay

Suzanne Vaisanen

Marc Vaisanen

Sal Liberto

Hash Mistry

Josh Martin

Shelley Moscrop

Jeff Griffin

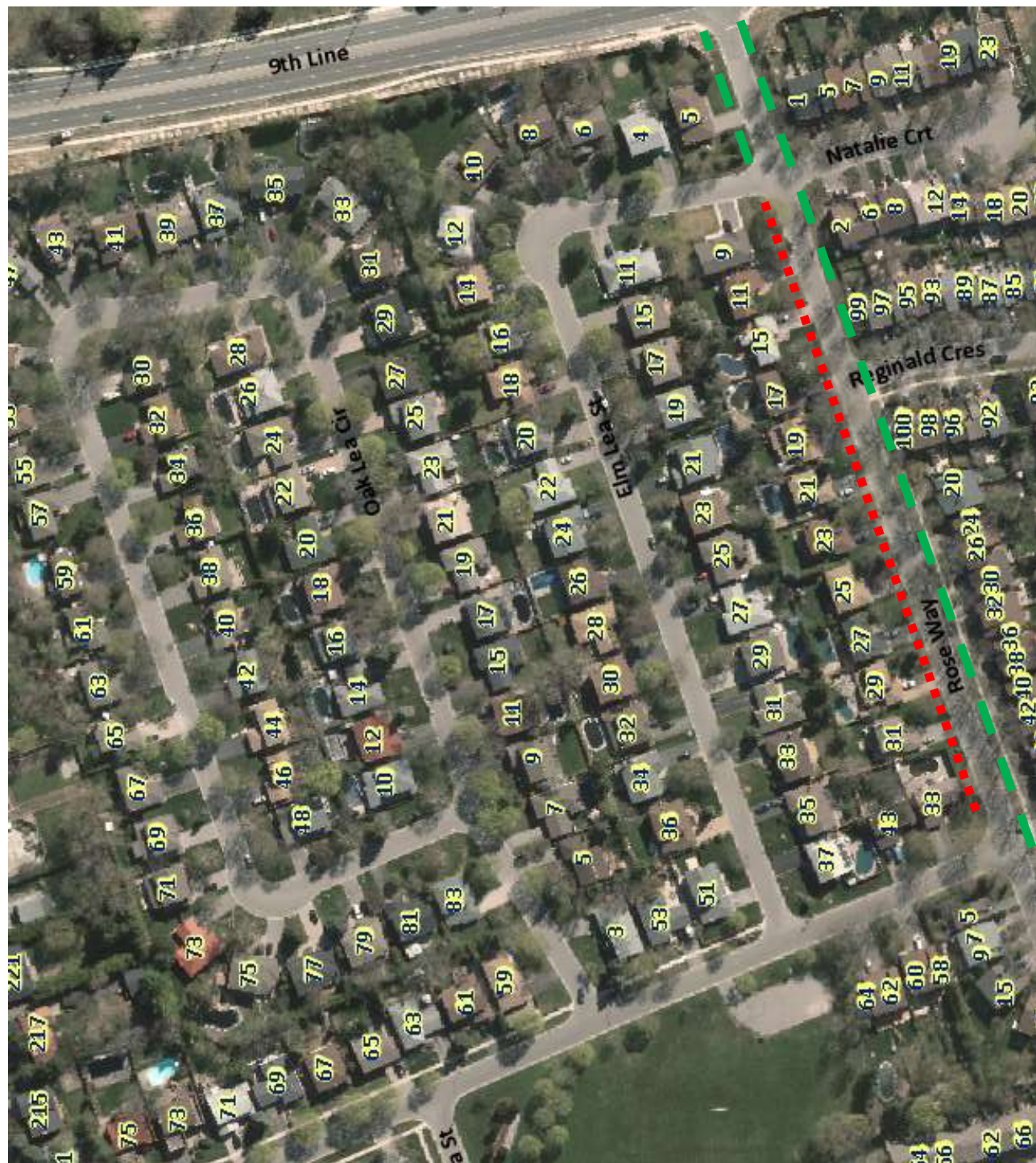
Kathleen Griffin

11 VIGNESWARAN P.

Rose Way On-Street Parking Observations



<p>16th Ave</p> <p>9th line</p> <p>Markham Rd</p> <p>Hwy 7</p>	<p>KEY MAP</p> <p>Existing "No Parking Anytime"</p> <p>Proposed "No Parking; 7am – 3pm; Monday - Friday"</p>	<p>Rose Way</p> <p>Proposed Parking Restriction</p>	<p>Engineering Dept. March 2017</p>	<p>ATTACHMENT C</p>
--	---	---	---	----------------------------





BY-LAW NUMBER _____

TO AMEND PARKING BY-LAW 2005-188

BE IT ENACTED BY THE COUNCIL OF THE CORPORATION OF THE CITY OF MARKHAM THAT PARKING BY-LAW 2005-188 BE AND THE SAME IS HEREBY AMENDED AS FOLLOWS:

1. That Schedule “C” of Parking By-law 2005-188, pertaining to “No Parking”, be amended by adding the following:

COLUMN 1	COLUMN 2	COLUMN 3	COLUMN 4
<u>STREET</u>	<u>SIDE(S)</u>	<u>BETWEEN</u>	<u>PROHIBITED TIME OR DAYS</u>
Rose Way	North	Elm Lea Street (east intersection) and the southwest corner of #33 Rose Way	7:00am – 3:00pm; Monday - Friday

2. The By-law shall come into force and effect upon receiving the third reading by the Council of the City of Markham and also when authorized signs have been erected.

READ A FIRST, SECOND AND THIRD TIME AND PASSED THIS _____
DAY OF _____, 2017.

KIMBERLY KITTERINGHAM
CITY CLERK

FRANK SCARPITTI
MAYOR