

**SUBJECT:** Haskett Drive Proposed Parking Prohibition

**PREPARED BY:** Dan Ahir, Engineering Technologist, ext. 2736  
David Porretta, Supervisor, Traffic Operations, ext. 2040

**REVIEWED BY:** Loy Cheah, Sr. Manager, Transportation, Ext. 4838

---

**RECOMMENDATION:**

- 1) That the report entitled “Haskett Drive Proposed Parking Prohibition,” be received; and,
- 2) That Schedule “C” of Parking By-law 2005-188 be amended to restrict parking on the Haskett Drive on the north and east side of Haskett Drive, between property line of #18/20 and the property line of #38/40 Haskett Drive; and,
- 3) That Schedule “C” of Parking By-law 2005-188 be amended to restrict parking on the south and west side of Haskett Drive, between a point 13 metres east of property line of #11/39 and the property line of #41/43 Haskett Drive; and,
- 4) That the Operations Department be directed to install the appropriate signs at the subject locations, funded through the Engineering Department account # 083-5350-18056-005; and,
- 5) That the By-law Enforcement Department be directed to enforce the parking prohibition upon installation of the signs and passing of the by-law; and,
- 6) That staff be authorized and directed to do all things necessary to give effect to this resolution.

**PURPOSE:**

This report recommends a parking prohibition on a portion of Haskett Drive to address traffic safety and emergency vehicle access concerns.

**BACKGROUND:**

Located north of 14<sup>th</sup> Avenue and west of Donald Cousens Parkway, Haskett Drive is classified as a local residential street with a posted speed of 40 km/h and a road width of 8.5 metres. Traffic Operations staff was notified by a local resident regarding vehicles consistently parking within the sharp curve located at 39 Haskett Drive, creating a safety concern.

**OPTIONS/ DISCUSSION:**

Traffic Operations staff conducted multiple site investigations to assess existing parking activities occurring on Haskett Drive, in proximity of the curve. Staff has confirmed that the parking activity approaching and within the curve is occurring consistently throughout the day, obstructing sightline visibility (see Attachment “A”) and restricting emergency vehicle access. This is exacerbated by the sharp angle of the curve.

By prohibiting parking within this section (see Attachment "B"), it is expected that the aforementioned traffic operational concerns will be mitigated. The proposed parking restrictions will not have an adverse impact on street parking availability. Notification letters have been sent to properties adjacent to the proposed restriction, advising them of the recommendation.

**FINANCIAL CONSIDERATIONS:**

The cost of materials and installation for the traffic sign is approximately \$500 and has been included in Engineering Department capital account #083-5350-18056-005 (Traffic Operational Improvements).

Ongoing maintenance and future replacement costs will be funded from the Operations Department operating budget. Therefore, there is no incremental operating and life cycle impact.

**HUMAN RESOURCES CONSIDERATIONS:**

Not applicable.

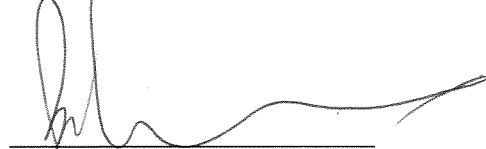
**ALIGNMENT WITH STRATEGIC PRIORITIES:**

The recommendations identified within this report align with the strategic focus for a Safe & Sustainable Community, through the ongoing management of the City's transportation network.

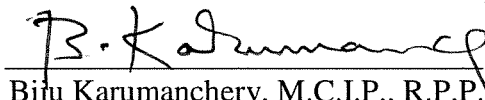
**DEPARTMENTS CONSULTED AND AFFECTED:**

Operations Department has been circulated this report, recognizing financial impacts associated with the additional regulatory signs.

**RECOMMENDED BY:**



Brian Lee, P. Eng.  
Director, Engineering



Biju Karumanchery, M.C.I.P., R.P.P.  
Acting Commissioner, Development Services

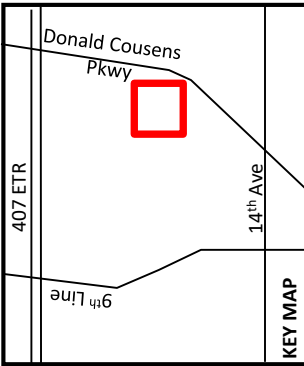
**ATTACHMENTS:**

- Attachment "A" – On-Street Parking Observations (Photos)
- Attachment "B" – Proposed Parking Prohibition Map
- Attachment "C" – Proposed By-Law Amendment

# ATTACHMENT "A"

## OBSERVED STREET PARKING ACTIVITY





Proposed  
"No Parking  
Anytime"

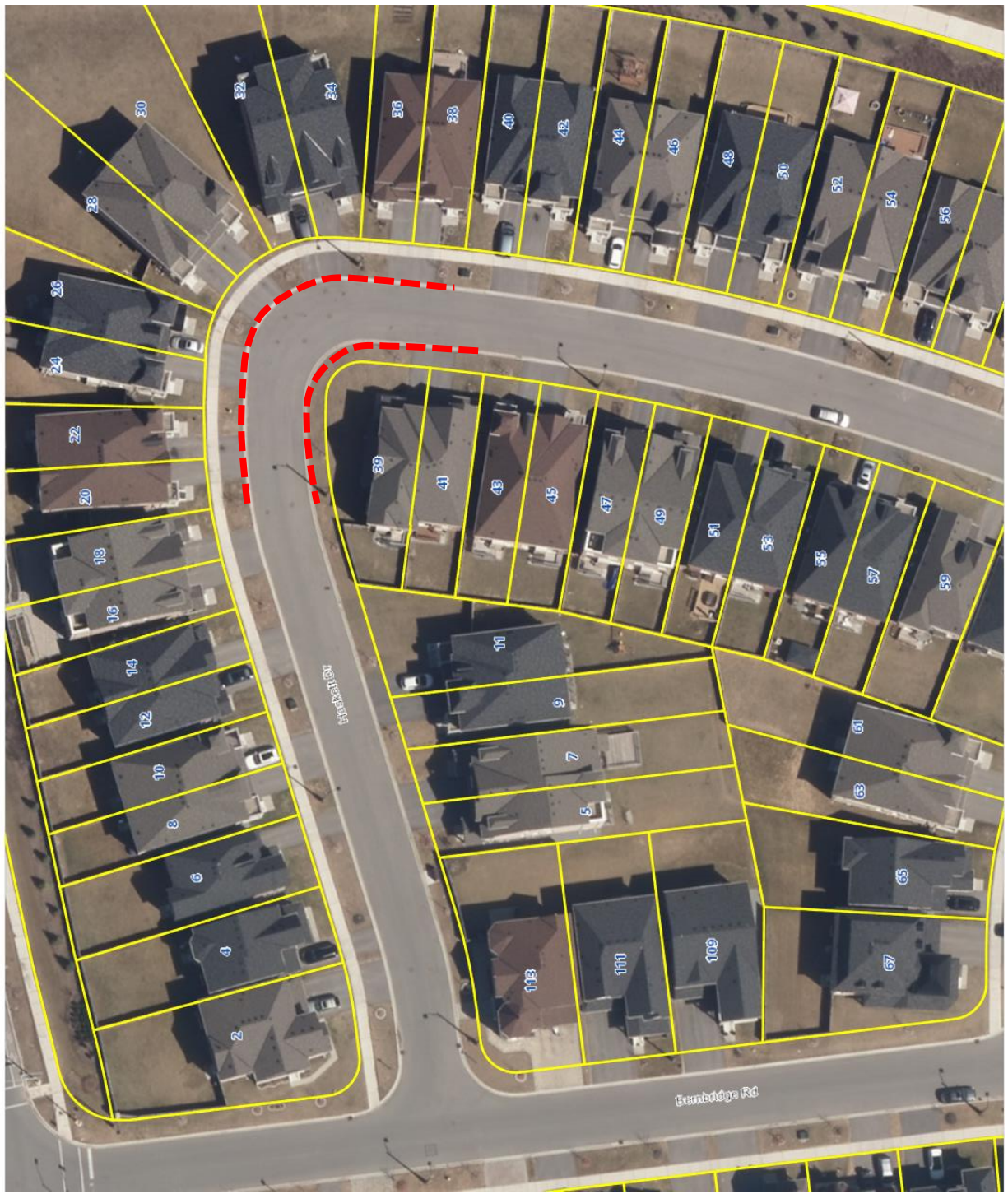


Haskett Drive  
Proposed "No Parking  
Anytime"



Engineering Dept.  
March 2018

ATTACHMENT B





BY-LAW NUMBER \_\_\_\_\_

TO AMEND PARKING BY-LAW 2005-188

**BE IT ENACTED BY THE COUNCIL OF THE CORPORATION OF THE TOWN OF MARKHAM THAT PARKING BY-LAW 2005-188 BE AND THE SAME IS HEREBY AMENDED AS FOLLOWS:**

1. That Schedule “C” of Parking By-law 2005-188, pertaining to “No Parking”, be amended by adding the following:

COLUMN 1	COLUMN 2	COLUMN 3	COLUMN 4
<u>STREET</u>	<u>SIDE(S)</u>	<u>BETWEEN</u>	<u>PROHIBITED TIME OR DAYS</u>
Haskett Drive	North/East	The property line of #18/20 and the property line of # 38/40	Anytime
Haskett Drive	South/West	A point 13 metres east of the property line of #11/39 and the property line of #41/43	Anytime

2. The By-law shall come into force and effect upon receiving the third reading by the Council of the City of Markham and also when authorized signs have been erected.

**READ A FIRST, SECOND AND THIRD TIME AND PASSED THIS \_\_\_\_\_**

**DAY OF \_\_\_\_\_, 2018.**

\_\_\_\_\_  
KIMBERLY KITTERINGHAM  
CITY CLERK

\_\_\_\_\_  
FRANK SCARPITTI  
MAYOR