
SUBJECT: Acceptance for Maintenance of Plans of Subdivision
Registered Plan Numbers:
65M-4333, 65M-4334, 65M-4432, 65M-4452, 65M-4474, 65M-4479, 65M-4589 (Wards 2, 3, 4 and 5)

PREPARED BY: Kay Man Poon, Manager, Municipal Inspections ext. 2897

RECOMMENDATION:

- 1) That the report entitled “Acceptance for Maintenance of Plans of Subdivision, Registered Plan Numbers: 65M-4333, 65M-4334, 65M-4432, 65M-4452, 65M-4474, 65M-4479, 65M-4589”, be received; and,
- 2) That the municipal services in Subdivision Registered Plan numbers 65M-4333, 65M-4334, 65M-4432, 65M-4452, 65M-4474, 65M-4479, 65M-4589, be Accepted for Maintenance; and,
- 3) That the Acceptance for Maintenance Period commence as of October 01, 2018, which is the date the subdivisions were eligible for acceptance; and,
- 4) That the Community Services Commission accept the responsibility for operating and maintaining the municipal infrastructure within the subdivisions as part of the City’s asset; and,
- 5) That future operating budgets be adjusted to include the operations and maintenance of the above subdivisions; and,
- 6) That by-laws as shown on Attachment ‘H’, be enacted by Council to establish each of the roads within the subdivisions as a public highway of the City of Markham; and,
- 7) That the by-law as shown on Attachment ‘I’, to amend Schedule ‘12’ of Traffic By-law #106-71, by including compulsory stops to the indicated streets, be enacted; and,
- 8) That the by-law as shown on Attachment ‘J’, to amend Schedule ‘A’ of the Speed By-law #2017-104, by including a maximum speed of 40 kilometers per hour for the streets indicated, be enacted; and,
- 9) That the by-law as shown on Attachment ‘K’, to amend Schedule ‘F’ of the Speed By-law #105-71, by including a maximum speed of 50 kilometres per hour for the streets indicated, be enacted; and,
- 10) That the by-law as shown on Attachment ‘L’, to amend Schedule ‘C’ of the Parking of Vehicles By-law #2005-188, by including prohibited parking on the streets indicated, be enacted; and,

-
- 11) That the Mayor and Clerk be authorized to execute the necessary releases from the terms of the Subdivision Agreements, subject to confirmation from the Director of Engineering that the Maintenance Period have been completed; and,
 - 12) That Staff be authorized and directed to do all things necessary to give effect to this resolution.

PURPOSE:

This report recommends the Acceptance for Maintenance of certain plans of subdivision, completed in accordance with the terms and conditions of the subdivision agreements, and recommends the City assume responsibility for the operation and maintenance of the municipal infrastructure within these plans. The report also recommends amendments to traffic control by-laws that include speed, stop and parking control on streets within the subdivisions.

BACKGROUND:

The construction of municipal services infrastructure within the plans of subdivision have been completed in accordance with the terms and conditions of the subdivision agreements and to the satisfaction of the Development Services Commission in consultation with other internal commenting departments. In accordance with conditions of the subdivision agreements, it is now appropriate that the City takes over, from the Developer, the responsibility for the maintenance and operation for the municipal services and transportation infrastructure within these plans.

OPTIONS/ DISCUSSION:**Construction of public works completed**

The construction of the public works and streetlighting for each subdivision have been completed to the City's satisfaction and in accordance with the subdivision agreement. All documentation, including the Consulting Engineer's Certificate confirming the completion of all engineering services to City standards and the overall grading plan, Owner's Statutory Declaration regarding payments with respect to the installation of the underground and above ground services, and Land Surveyor Certificate confirming the re-establishment of all survey monuments and bench marks has been received.

Street Illumination

The design and installation of street illumination has been certified by the streetlight consulting engineer for the developer and has been reviewed by Engineering Department and found the street lighting levels to be acceptable and in accordance with ANSI/IESNA Recommended Practice RP-8-00, the Electrical Safety Authority requirements and the City of Markham Criteria and Standards.

Additional infrastructure inventory to be maintained

Within the subdivisions, there exist:

- 4.65 kilometers of public highway
- 3.76 kilometers of sidewalk
- 0.20 kilometers of multi-use pathway
- 3.38 kilometers of storm sewers
- 2.84 kilometers of sanitary sewers
- 3.66 kilometers of watermain

437 street trees
131 streetlights
3.07 hectares of parkland and open space
1.20 hectares of Stormwater Management pond

which will require maintenance by the Community Services Commission and life cycle be budgeted for in future budgets.

Acceptance for Maintenance Date

Staff recommends that the date for Acceptance for Maintenance be established as of October 01, 2018, the date the developments were eligible for Acceptance for Maintenance.

Public highway by-law to be passed

A by-law as shown on Attachment 'H' is to be enacted by Council to establish each street within the subdivision as a public highway of the City of Markham.

Amendments to speed, stop and parking control by-laws

Upon the "Acceptance for Maintenance" of the roads, it is important to ensure that all applicable traffic control by-laws are adopted to ensure safe and efficient operations by all road users. The recommended amendments as shown on Attachments 'I', 'J', 'K' and 'L', to by-laws 106-71, 2017-104, 105-71 and 2005-188 are attached to this report for adoption.

FINANCIAL CONSIDERATIONS

N.A.

HUMAN RESOURCES CONSIDERATIONS

N.A.

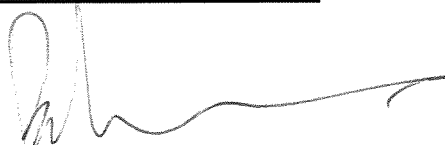
ALIGNMENT WITH STRATEGIC PRIORITIES:

The plans of subdivision, municipal services and infrastructure meet the "Building Markham's Future Together" areas of strategic focus and have been designed and constructed in accordance with City policies, design criteria and standards including all environmental approvals and permits.

BUSINESS UNITS CONSULTED AND AFFECTED:

The Community & Fire Services Commission will take over operations and maintenance of the municipal infrastructure within these plans of subdivision. This report has been reviewed by Operations and Environmental Services Departments, and their comments have been incorporated.

RECOMMENDED BY:



Brian Lee, P.Eng
Director, Engineering



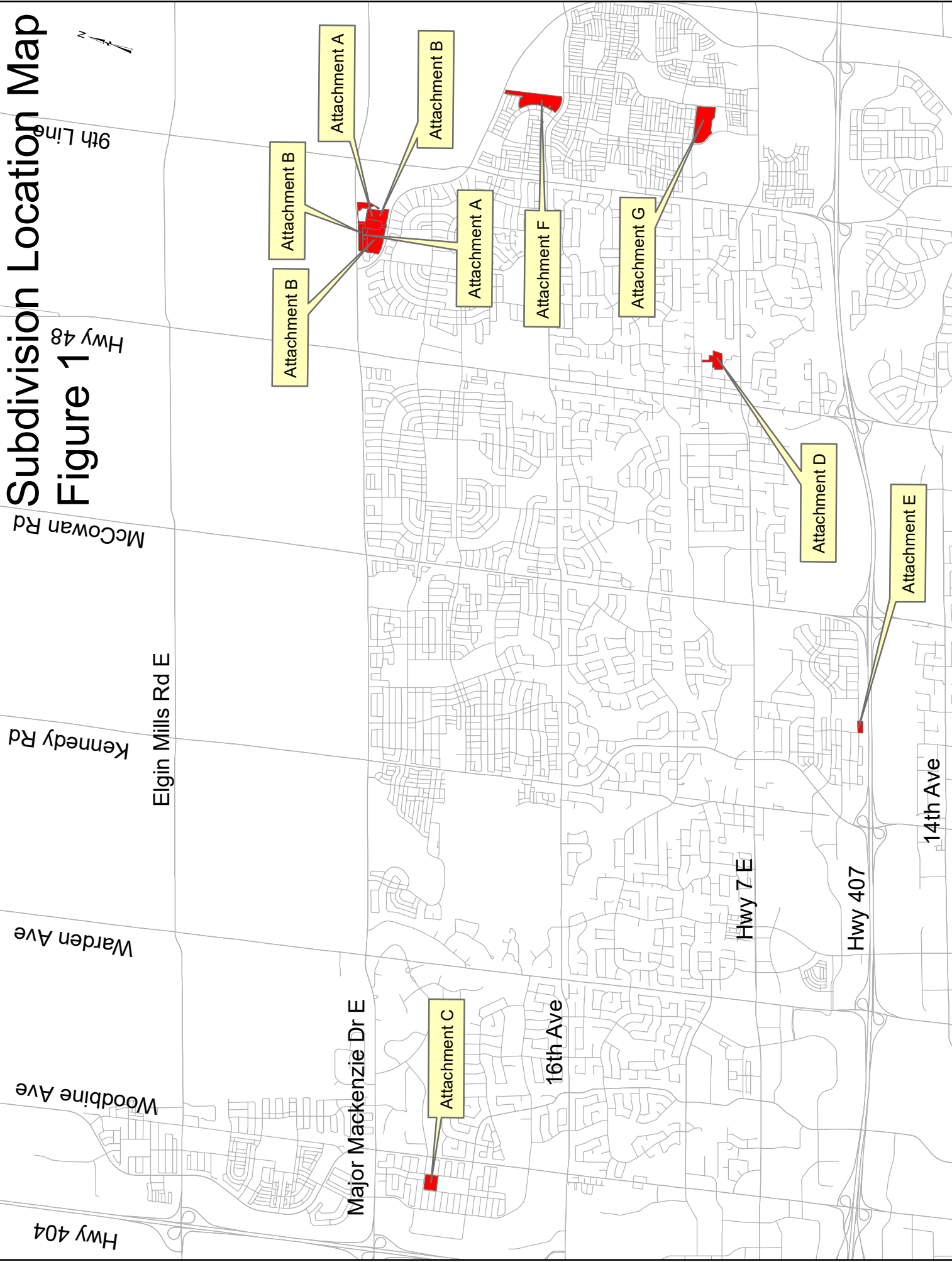
Arvin Prasad, RPP, MCIP
Commissioner, Development Services

ATTACHMENTS:

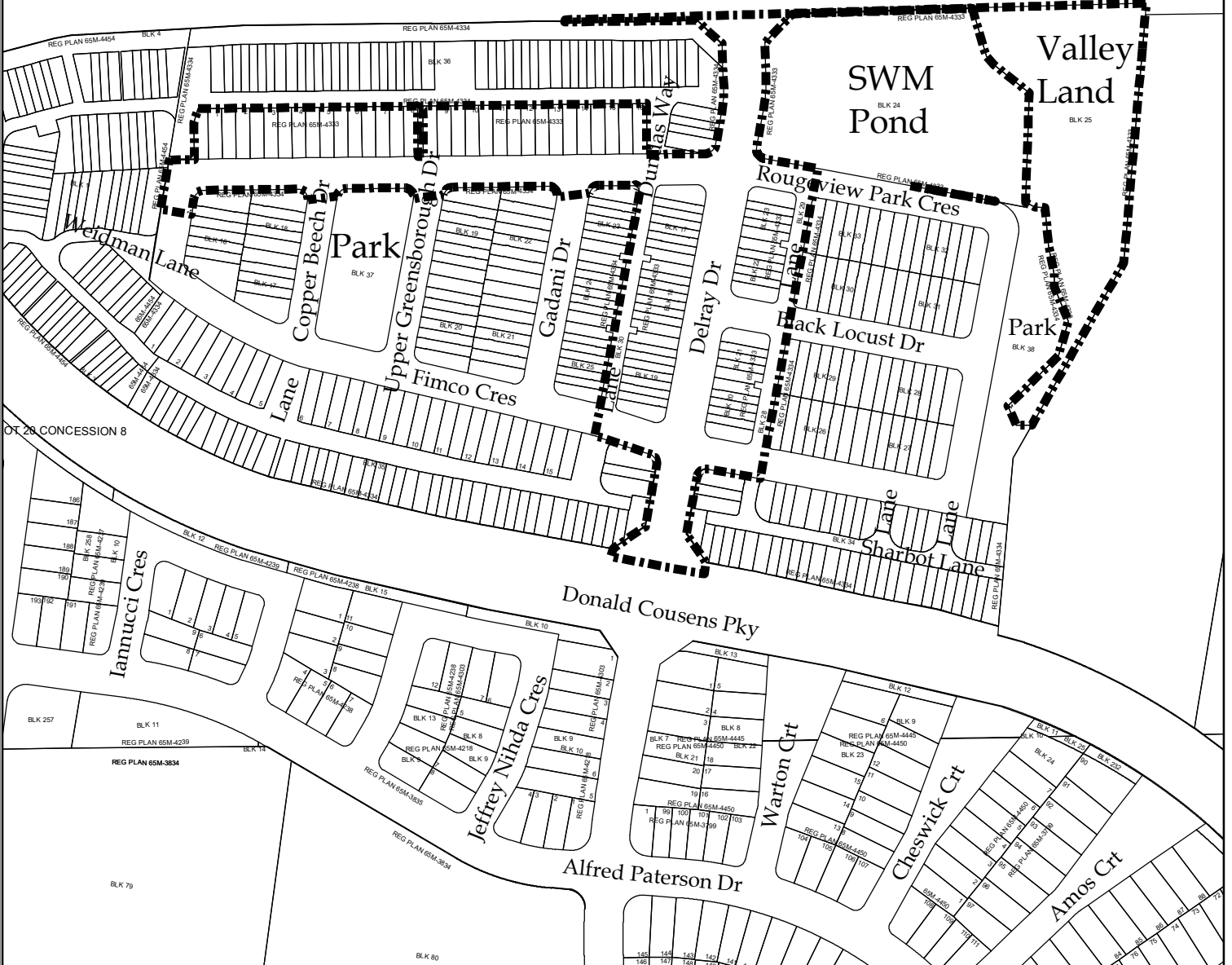
Figure 1:	Subdivision Location Map	
Attachment 'A':	Digram Developments Inc.	Plan 65M-4333
Attachment 'B':	Digram Developments Inc.	Plan 65M-4334
Attachment 'C':	Grandfield Homes (Oakford) Limited	Plan 65M-4432
Attachment 'D':	Gemini Urban Design (Houghton) Corp.	Plan 65M-4452
Attachment 'E':	Caboto Meadows Inc.	Plan 65M-4474
Attachment 'F':	1473092 Ontario Limited	Plan 65M-4479
Attachment 'G':	Wykland Estates Inc. (Block only)	Plan 65M-4589
Attachment 'H':	Road Dedication By-Law	Plan 65M-4333 Plan 65M-4334 Plan 65M-4432 Plan 65M-4474 Plan 65M-4479
Attachment 'I':	Traffic Control By-Law - Compulsory Stops	
Attachment 'J':	Traffic Control By-Law – Maximum Speed 40 kilometer/hour	
Attachment 'K':	Traffic Control By-Law – Maximum Speed 50 kilometer/hour	
Attachment 'L':	Traffic Control By-Law – Prohibited Parking	

Subdivision Location Map

Figure 1



CONCESSION BETWEEN LOTS 20 AND 21 CONCESSION 8 Major Mackenzie Dr E



ATTACHMENT A

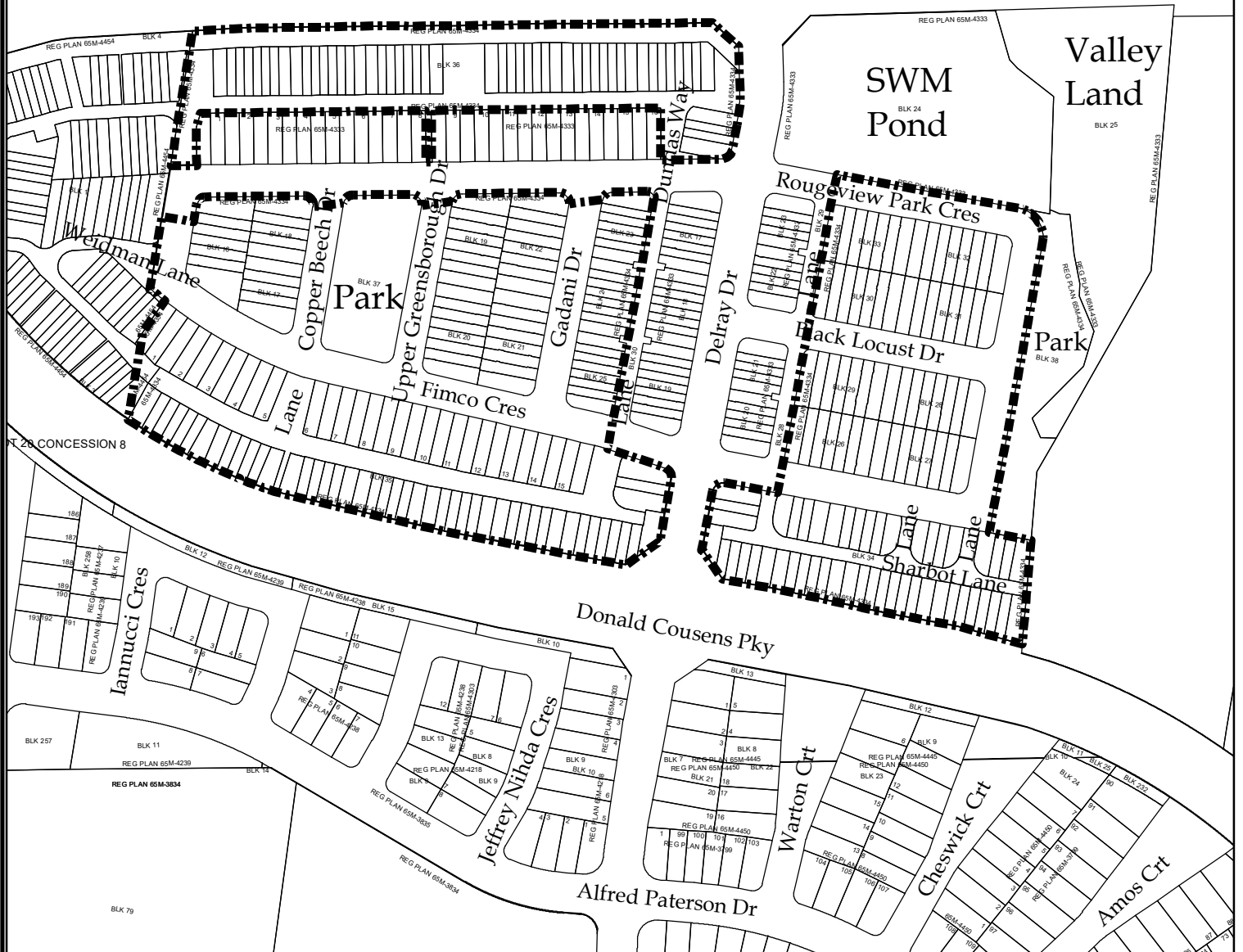
APPLICANT: Digram Developments Inc.

Plan 65M-4333



 SUBJECT LANDS

ADVANCE BETWEEN LOTS 20 AND 21 CONCESSION 8 Major Mackenzie Dr E



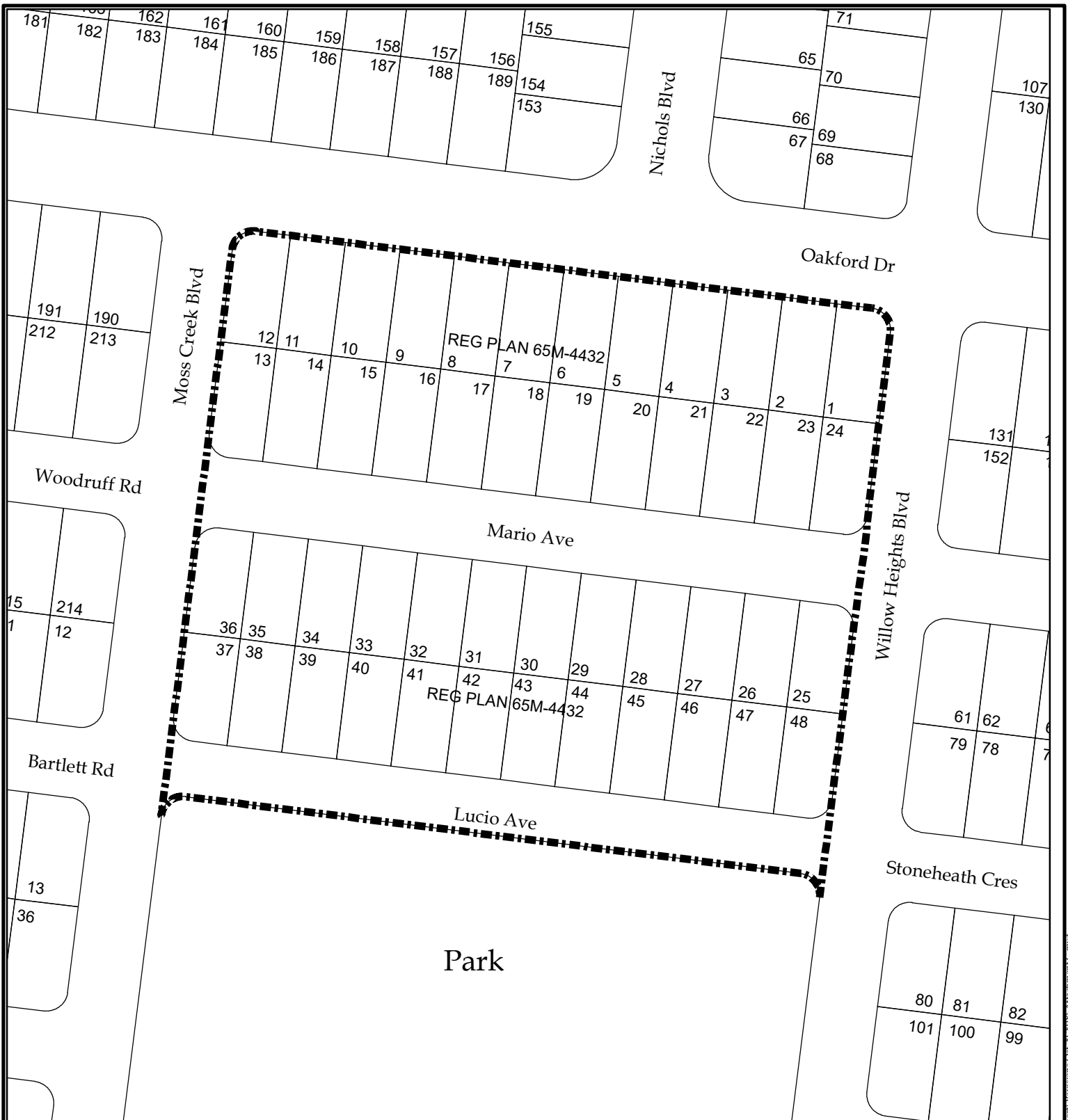
ATTACHMENT B

APPLICANT: Digram Developments Inc.

Plan 65M-4334

 SUBJECT LANDS





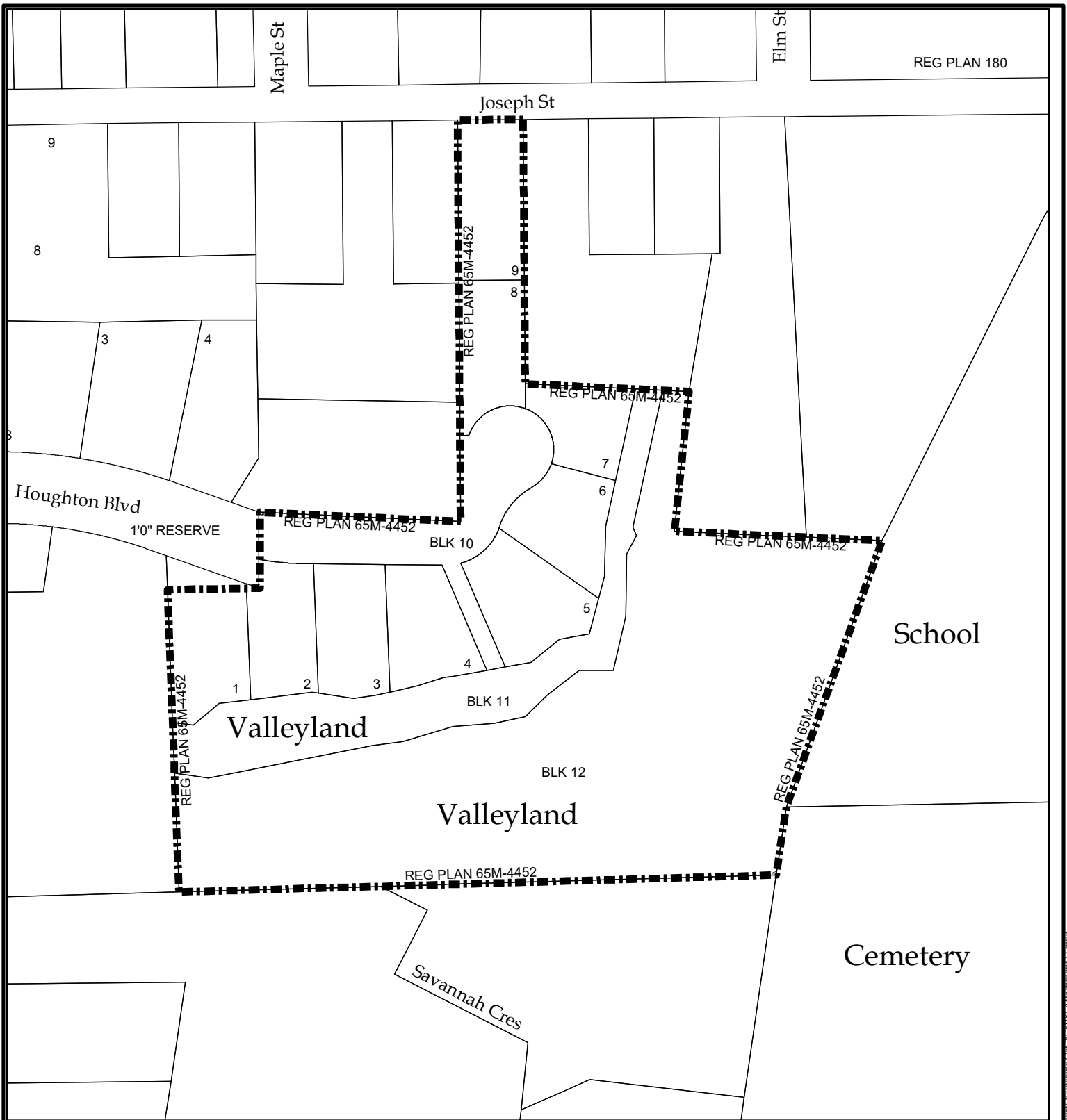
ATTACHMENT C

APPLICANT: Grandfield Homes (Oakford) Limited

Plan 65m-4432

 SUBJECT LANDS





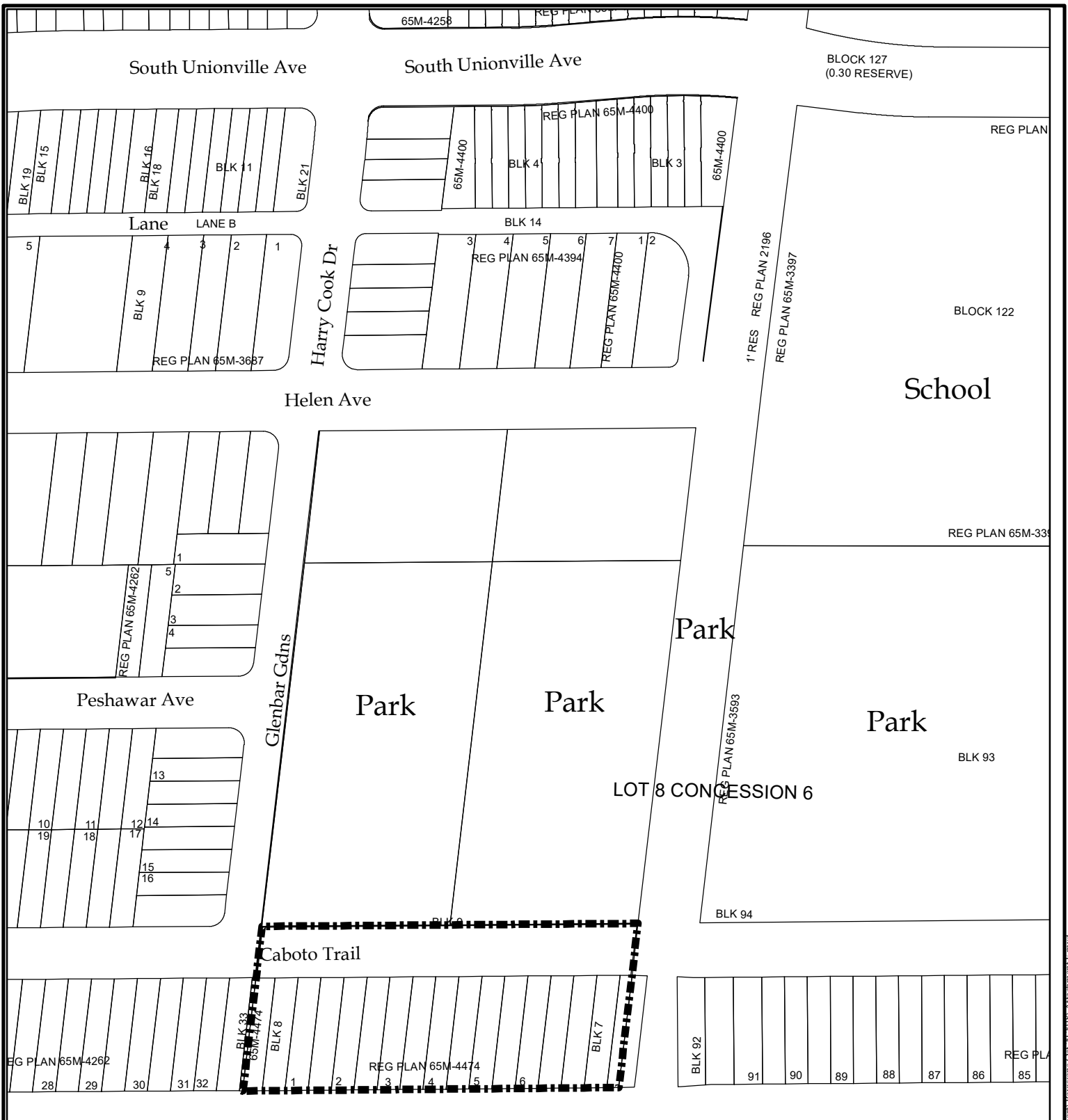
ATTACHMENT D

APPLICANT: Gemini Urban Design (Houghton) Corp.

Plan 65m-4452

 SUBJECT LANDS





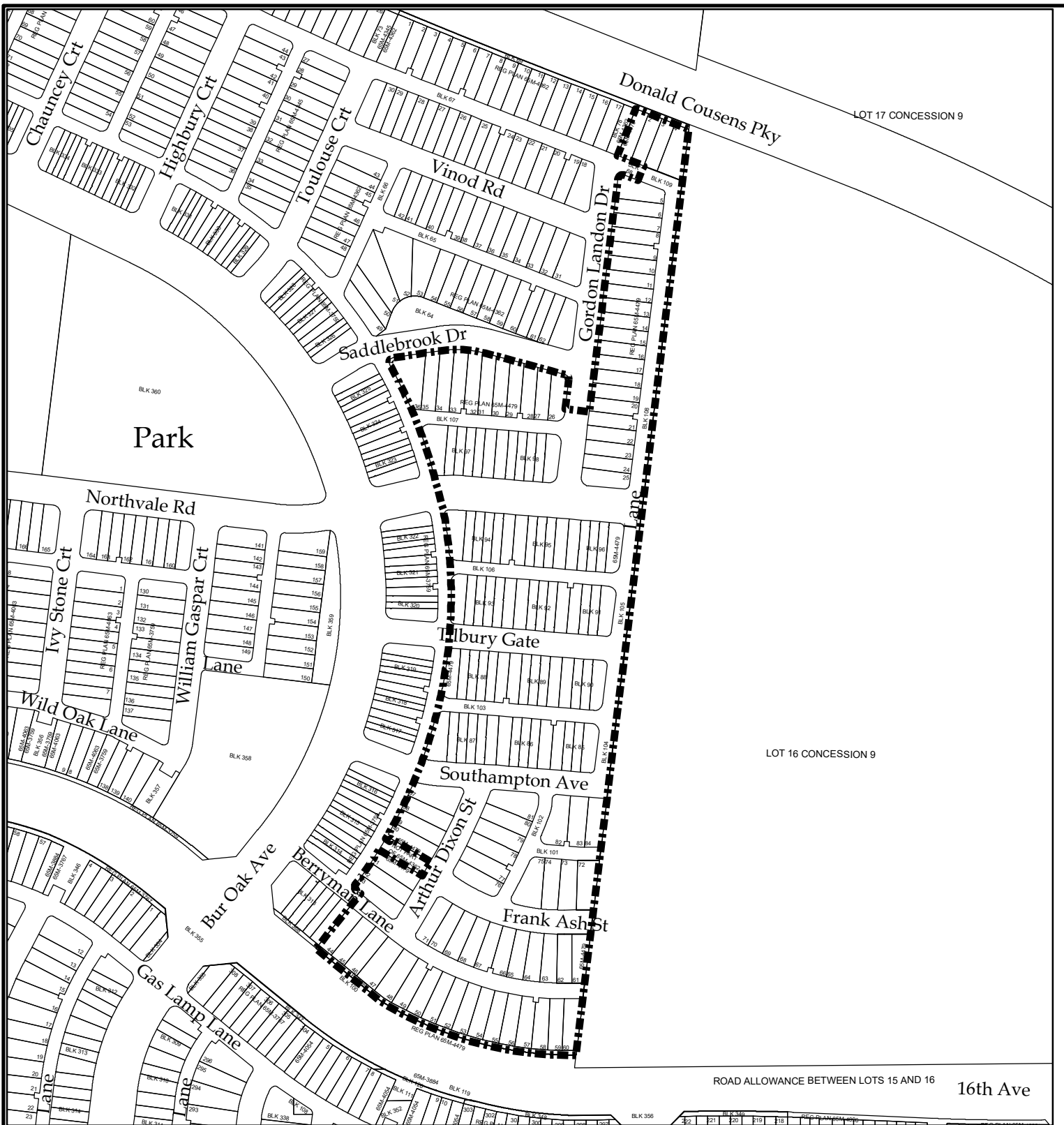
ATTACHMENT E

APPLICANT: Caboto Meadows Inc.

Plan 65M-4474



 SUBJECT LANDS



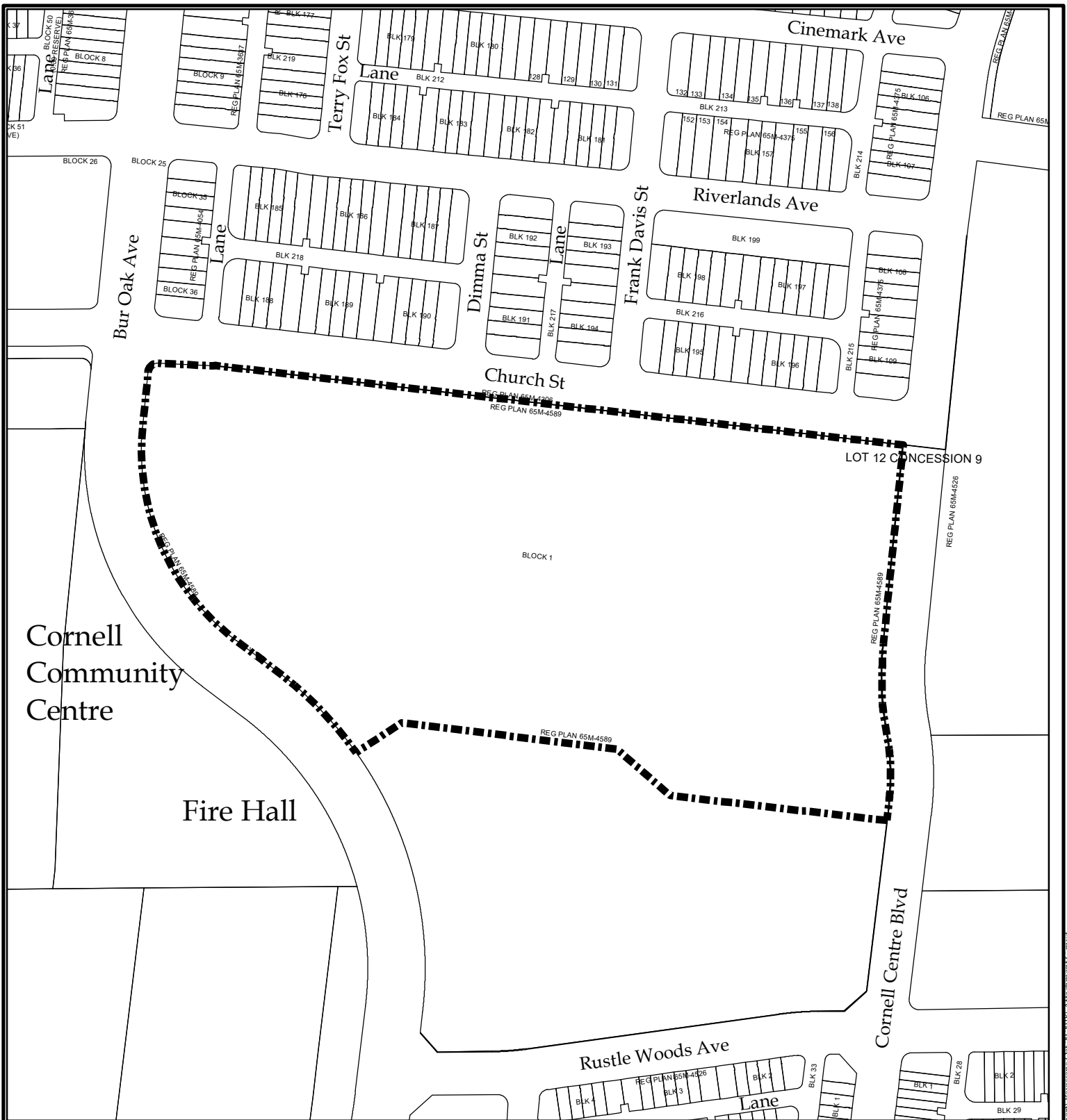
ATTACHMENT F

APPLICANT: 1473092 Ontario Limited

Plan 65M-4479

 SUBJECT LANDS





ATTACHMENT G

APPLICANT: Wykland Estates Inc

Plan 65M-4589

 SUBJECT LANDS



2018-

A by-law to establish streets laid out according
to Plan of Subdivision 65M-4333 as a public highway
Part of Lot 20, Concession 8
(Digram Developments Inc.)
City of Markham, Regional Municipality of York

Whereas by plan of subdivision registered in the Land Registry Office for the Land Titles Division of York Region (No. 65) as No. 65M-4333, the streets laid out in accordance with the said plan of subdivision have been dedicated for highway purposes;

Now therefore the Council of The Corporation of the City of Markham hereby enacts as follows:

1. That the streets named Black Locust Drive, Delray Drive, Fimco Crescent (Both Portions), Rougeview Park Crescent (Both Portions), and the Lanes namely Blocks 28 to 30, inclusive, as laid out and dedicated in accordance with the Plan of Subdivision registered in the Land Registry Office for the Land Titles Division of York Region (No. 65) as Plan No. 65M-4333 is hereby adopted for public use and declared to be and form part of the City of Markham highway system.

Read a first, second and third time and passed this 17th day of December, 2018.

City Clerk

Mayor

2018-

A by-law to establish streets laid out according
to Plan of Subdivision 65M-4334 as a public highway
Part of Lot 20, Concession 8
(Digram Developments Inc.)
City of Markham, Regional Municipality of York

Whereas by plan of subdivision registered in the Land Registry Office for the Land Titles Division of York Region (No. 65) as No. 65M-4334, the streets laid out in accordance with the said plan of subdivision have been dedicated for highway purposes;

Now therefore the Council of The Corporation of the City of Markham hereby enacts as follows:

1. That the streets named Black Locust Drive, Copper Beech Drive, Fimco Crescent, Gadani Drive, Rougeview Park Crescent, Upper Greensborough Drive, and the Lanes namely Blocks 41 and 42, inclusive, as laid out and dedicated in accordance with the Plan of Subdivision registered in the Land Registry Office for the Land Titles Division of York Region (No. 65) as Plan No. 65M-4334 is hereby adopted for public use and declared to be and form part of the City of Markham highway system.

Read a first, second and third time and passed this 17th day of December, 2018.

City Clerk

Mayor

2018-

A by-law to establish streets laid out according
to Plan of Subdivision 65M-4432 as a public highway
Block 226, Plan 65M-3526 and Block 77, Plan 65M-3559
Part of Block 186, Plan 65M-3358
(Grandfield Homes (Oakford) Limited)
City of Markham, Regional Municipality of York

Whereas by plan of subdivision registered in the Land Registry Office for the Land Titles Division of York Region (No. 65) as No. 65M-4432, the streets laid out in accordance with the said plan of subdivision have been dedicated for highway purposes;

Now therefore the Council of The Corporation of the City of Markham hereby enacts as follows:

1. That the streets named Mario Avenue and Lucio Avenue as laid out and dedicated in accordance with the Plan of Subdivision registered in the Land Registry Office for the Land Titles Division of York Region (No. 65) as Plan No. 65M-4432 is hereby adopted for public use and declared to be and form part of the City of Markham highway system.

Read a first, second and third time and passed this 17th day of December, 2018.

City Clerk

Mayor

2018-

A by-law to establish streets laid out according
to Plan of Subdivision 65M-4474 as a public highway
Part of Lot 7, Plan 2196
(Caboto Meadows Inc.)
City of Markham, Regional Municipality of York

Whereas by plan of subdivision registered in the Land Registry Office for the Land Titles Division of York Region (No. 65) as No. 65M-4474, the streets laid out in accordance with the said plan of subdivision have been dedicated for highway purposes;

Now therefore the Council of The Corporation of the City of Markham hereby enacts as follows:

1. That the street named Caboto Trail as laid out and dedicated in accordance with the Plan of Subdivision registered in the Land Registry Office for the Land Titles Division of York Region (No. 65) as Plan No. 65M-4474 is hereby adopted for public use and declared to be and form part of the City of Markham highway system.

Read a first, second and third time and passed this 17th day of December, 2018.

City Clerk

Mayor

2018-

A by-law to establish streets laid out according
to Plan of Subdivision 65M-4479 as a public highway
Part of Lots 16 and 17, Concession 9
(1473092 Ontario Limited)
City of Markham, Regional Municipality of York

Whereas by plan of subdivision registered in the Land Registry Office for the Land Titles Division of York Region (No. 65) as No. 65M-4479, the streets laid out in accordance with the said plan of subdivision have been dedicated for highway purposes;

Now therefore the Council of The Corporation of the City of Markham hereby enacts as follows:

1. That the streets named Arthur Dixon Street, Frank Ash Street, Gordon Landon Drive, Northvale Road, Southampton Avenue, Tilbury Gate, and the Lanes namely Berryman Lane, Blocks 101 to 109, both inclusive, Lane W (Both Portions); Lane X (Both Portions); Lane Y (Both Portions) and Lane Z as laid out and dedicated in accordance with the Plan of Subdivision registered in the Land Registry Office for the Land Titles Division of York Region (No. 65) as Plan No. 65M-4479 is hereby adopted for public use and declared to be and form part of the City of Markham highway system.

Read a first, second and third time and passed this 17th day of December, 2018.

City Clerk

Mayor

Attachment '1'

THE CORPORATION OF THE CITY OF MARKHAM

BY-LAW NUMBER _____

TO AMEND BY-LAW 106-71

BE IT ENACTED BY THE COUNCIL OF THE CORPORATION OF THE CITY OF MARKHAM THAT BY-LAW NUMBER 106-71 BE AND THE SAME IS HEREBY AMENDED AS FOLLOWS:

1. By adding to Schedule 12 – Compulsory Stops – at the following named intersections:

<u>COLUMN 1 INTERSECTION</u>	<u>COLUMN 2 FACING TRAFFIC</u>	<u>COLUMN 3 LOCATION OF STOP SIGN</u>
65M-4333 & 65M-4334 Delray Drive and Major Mackenzie Drive	Northbound On Delray Drive	East side on Delray Drive, on the south side of Major Mackenzie Drive
Delray Drive and Donald Cousens Parkway	Southbound on Delray Drive	West side on Delray Drive, North side of Donald Cousens Parkway
Fimco Crescent (north leg) and Delray Drive	Eastbound on Fimco Crescent (north leg)	South side on Fimco Crescent (north leg), on the west side of Delray Drive
Rougeview Park Crescent (north leg) and Delray Drive	Westbound on Rougeview Park Crescent (north leg)	North side on Rougeview Park Crescent, on the east side of Delray Drive
Lane Block 28 and Rougeview Park Drive (south leg)	Southbound on Lane Block 28	West side on Lane Block 28, on the north side of Rougeview Park Crescent (south leg)
Lane Block 30 and Fimco Crescent (north leg)	Northbound on Lane Block 30	East side on Lane Block 30, on the south side of Fimco Crescent (north leg)
Black Locust Drive and Rougeview Park Crescent	Eastbound on Black Locust Drive	South side on Black Locust Drive, on the west side of Rougeview Park Crescent
Black Locust Drive and Delray Drive	Westbound on Black Locust Drive	North side on Black Locust Drive, on the east side of Delray Drive
Lane Block 28 and Black Locust Drive	Northbound on Lane Block 28	East side on Lane Block 28, on the south side of Black Locust Drive.
Lane Block 30 and Fimco Crescent (south leg)	Southbound on Lane Block 30	West side on Lane Block 30, on the north side of Fimco Crescent (south leg)
Lane Block 29 and Rougeview Park Crescent (north leg)	Northbound on Lane Block 29	East side on Lane Block 29, on the south side of Rougeview Park Crescent (north leg)

COLUMN 1 <u>INTERSECTION</u>	COLUMN 2 <u>FACING TRAFFIC</u>	COLUMN 3 <u>LOCATION OF STOP SIGN</u>
Lane Block 29 and Black Locust Drive	Southbound on Lane Block 29	West side on Lane Block 29, on the north side of Black Locust Drive
Rougeview Park Crescent (south leg) and Delray Drive	Westbound on Rougeview Park Crescent (south leg)	North Side on Rougeview Park Crescent (south leg), on the east side of Delray Drive
Fimco Crescent (south leg) and Delray Drive	Eastbound on Fimco Crescent (south leg)	South side on Fimco Crescent (south leg), on the west side of Delray Drive
Gadani Drive and Fimco Crescent (north leg)	Northbound on Gadani Drive	East side on Gadani Drive, on the south side of Fimco Crescent (north leg)
Gadani Drive and Fimco Crescent (south leg)	Southbound on Gadani Drive	West side on Gadani Drive, on the north side of Fimco Crescent (south leg)
Upper Greensborough Drive and Fimco Crescent (north leg)	Northbound on Upper Greensborough Drive	East side on Upper Greensborough Drive, on the south side of Fimco Crescent (north leg)
Upper Greensborough Drive and Fimco Crescent (south leg)	Southbound on Upper Greensborough Drive	West side on Upper Greensborough Drive, on the north side of Fimco Crescent (south leg)
Copper Beech Drive and Fimco Crescent (north leg)	Northbound on Copper Beech Drive	East side on Copper Beech Drive, on the south side of Fimco Crescent (north leg)
Copper Beech Drive and Fimco Crescent (south leg)	Southbound on Copper Beech Drive	West side on Copper Beech Drive, on the north side of Fimco Crescent (south leg)
65M-4432		
Mario Avenue and Moss Creek Boulevard	Westbound on Mario Avenue	North side of Mario Avenue on the east side of Moss Creek Boulevard
Mario Avenue and Willow Heights Boulevard	Eastbound on Mario Avenue	South side of Mario Avenue on the west side of Willow Heights Boulevard
Lucio Avenue and Moss Creek Boulevard	Westbound on Lucio Avenue	North side of Lucio Avenue on the east side of Moss Creek Boulevard
Lucio Avenue and Willow Heights Boulevard	Eastbound on Lucio Avenue	South side of Lucio Avenue on the west side of Willow Heights Boulevard
65M-4479		
Lane 107 and Lane Z	Westbound on Lane 107	North side of Lane 107, on the East side of Lane Z
Lane 107 and Gordon Landon Drive	Eastbound on Lane 107	South side of Lane 107, on the West side of Gordon Landon Drive
Lane 106 and Lane Y	Westbound on Lane 106	Northside of Lane 106, on the East side of Lane Y

<u>COLUMN 1</u> <u>INTERSECTION</u>	<u>COLUMN 2</u> <u>FACING TRAFFIC</u>	<u>COLUMN 3</u> <u>LOCATION OF STOP SIGN</u>
Lane 106 and Lane 105	Eastbound on Lane 106	South side of Lane 106, on the West side of Lane 105
Lane 103 and Lane X	Westbound on Lane 103	North side of Lane 103, on the East side of Lane X
Lane 103 and Lane 104	Eastbound on Lane 103	South side of Lane 103, on the West side of 104
Lane 101 and Lane 102	Westbound on Lane 101	North side of Lane 101, on the East of Lane 102
Frank Ash Street and Arthur Dixon Street	Westbound on Frank Ash Street	North side of Frank Ash Street, on the East side of Arthur Dixon Street
Lane 61 and Frank Ash Street	Northbound on Lane 61	East side of Lane 61, on the South side of Frank Ash Street
Lane 72 and Frank Ash Street	Southbound on Lane 72	West side of Lane 72, on the North of Frank Ash Street
Arthur Dixon Street and Berryman Lane	Southbound on Arthur Dixon Street	West side of Arthur Dixon Street, on the North side of Berryman Lane
Arthur Dixon Street and Southampton Avenue	Northbound on Arthur Dixon Street	East side of Arthur Dixon Street, on the South side of Southampton Avenue
Lane 102 and Frank Ash Street	Southbound on Frank Ash Street	West side of Lane 102, on the North side of Frank Ash Street
Lane 102 and Southampton Avenue	Northbound on Lane 102	East side of Lane 102, on the South side of Southampton Avenue
Lane 104 and Southampton Avenue	Southbound on Lane 104	West side of Lane 104, on the North side of Southampton Avenue
Lane 104 and Tilbury Gate	Northbound on Lane 104	East side of Lane 104, on the South side of Tilbury Gate
Lane 105 and Tilbury Gate	Southbound on Lane 105	West side of Lane 105, on the North side of Tilbury Gate
Lane 105 and Northvale Road	Northbound on Lane 105	East side of Lane 105, on the South of Northvale Road
Gordon Landon Drive and Northvale Road	Southbound on Gordon Landon Drive	West side of Gordon Landon Drive, on the North of Northvale Road
Lane 108 and Northvale Road	Southbound on Lane 108	West side of Lane 108, on the North side of Northvale Road
Lane 108 and Lane 109	Northbound on Lane 108	East side of Lane 108, on the South side of Lane 109
Prince Regent Street and Betty Roman Boulevard	Northbound on Prince Regent Street	East side of Prince Regent Street at Betty Roman Boulevard

COLUMN 1
INTERSECTION

COLUMN 2
FACING TRAFFIC

COLUMN 3
LOCATION OF STOP SIGN

Prince Regent Street and Pope John Paul II Square	Southbound on Prince Regent Street	West side of Prince Regent Street at Pope John Paul II Square.

- The By-Law shall come into force and effect upon receiving the third reading by the Council of the City of Markham and also when authorized signs have been erected.

READ A FIRST, SECOND AND THIRD TIME AND PASSED THIS _____ DAY OF _____, 2018.

KIMBERLY KITTERINGHAM
CITY CLERK

FRANK SCARPITTI
MAYOR

Attachment 'J'

THE CORPORATION OF THE CITY OF MARKHAM

BY-LAW NUMBER _____

TO AMEND BY-LAW 2017-104

BE IT ENACTED BY THE COUNCIL OF THE CORPORATION OF THE CITY OF MARKHAM THAT BY-LAW NUMBER 2017-104 BE AND THE SAME IS HEREBY AMENDED AS FOLLOWS:

1. By adding to the following street to Schedule "A" defining a maximum speed of 40 kilometres per hour:

<u>COLUMN 1 HIGHWAY</u>	<u>COLUMN 2 FROM</u>	<u>COLUMN 3 TO</u>
65M-4333 & 65M-4334		
Delray Drive	Major Mackenzie Drive	Donald Cousens Parkway
Fimco Crescent	In It's Entirely	In It's Entirely
Rougeview Park Crescent	In It's Entirely	In It's Entirely
Black Locust Drive	In It's Entirely	In It's Entirely
Gadani Drive	In It's Entirely	In It's Entirely
Upper Greensborough Drive	In It's Entirely	In It's Entirely
Copper Beech Drive	In It's Entirely	In It's Entirely
65M-4432		
Mario Avenue	Moss Creek Boulevard	Willow Heights Boulevard
Lucio Avenue	Moss Creek Boulevard	Willow Heights Boulevard
65M-4474		
Caboto Trail	495 Caboto Trail	465 Caboto Trail
65M-4479		
Gordon Landon Drive	Northvale Road	Saddlebrook Drive
Southampton Avenue	Bur Oak Avenue	Lane 104
Frank Ash Street	Arthur Dixon Street	20 Frank Ash Street
Arthur Dixon Street	Southampton Avenue	Berryman Lane
65R-32850		
Pope John Paul II Square	Prince Regent Street	47 Anthony Roman Avenue

2. The By-Law shall come into force and effect upon receiving the third reading by the Council of the City of Markham and also when authorized signs have been erected.

READ A FIRST, SECOND AND THIRD TIME AND PASSED THIS _____ DAY OF _____, 2018.

COLUMN 1
HIGHWAY

COLUMN 2
FROM

COLUMN 3
TO

KIMBERLY KITTERINGHAM
CITY CLERK

FRANK SCARPITTI
MAYOR

Attachment 'K'

THE CORPORATION OF THE CITY OF MARKHAM

BY-LAW NUMBER _____

TO AMEND BY-LAW 2017-104

BE IT ENACTED BY THE COUNCIL OF THE CORPORATION OF THE CITY OF MARKHAM THAT BY-LAW NUMBER 2017-104 BE AND THE SAME IS HEREBY AMENDED AS FOLLOWS:

1. By adding to the following street to Schedule "B" defining a maximum speed of 50 kilometres per hour:

COLUMN 1
HIGHWAY

COLUMN 2
FROM

COLUMN 3
TO

Prince Regent Street

Betty Roman Boulevard

Pope John Paul II Square

2. The By-Law shall come into force and effect upon receiving the third reading by the Council of the City of Markham and also when authorized signs have been erected.

READ A FIRST, SECOND AND THIRD TIME AND PASSED THIS _____ DAY OF _____, 2018.

KIMBERLY KITTERINGHAM
CITY CLERK

FRANK SCARPITTI
MAYOR

Attachment 'L'

THE CORPORATION OF THE CITY OF MARKHAM

BY-LAW NUMBER _____

TO AMEND BY-LAW 2005-188

BE IT ENACTED BY THE COUNCIL OF THE COPORATION OF THE CITY OF MARKHAM THAT Parking By-Law 2005-188 be and the same is hereby amended as follows:

1. That Schedule C of Parking By-Law 2005-188 pertaining to "Prohibited Parking" be amended by adding the following:

<u>COLUMN 1</u> <u>LOCATION</u>	<u>COLUMN 2</u> <u>SIDE(S)</u>	<u>COLUMN 3</u> <u>BETWEEN</u>	<u>COLUMN 4</u> <u>PROHIBITED</u> <u>TIME OR</u> <u>DAY</u>
------------------------------------	-----------------------------------	-----------------------------------	----------------------------------------------------------------------

65M-4333 & 65M-4334

Delray Drive	Both	Major Mackenzie Drive and Fimco Crescent (north leg)	Anytime
Delray Drive	West	Fimco Crescent (south leg) and Donald Cousens Parkway	Anytime
Rougeview Park Crescent	South / East / North	Delray Drive (north leg) and Delray Drive (south leg)	Anytime
Black Locust Drive	South	Delray Drive and Rougeview Park Crescent	Anytime
Gadani Drive	West	Fimco Crescent (North Leg) and Fimco Crescent (South Leg)	Anytime
Upper Greensborough Drive	East	Fimco Crescent (North Leg) and Fimco Crescent (South Leg)	Anytime
Copper Beach Drive	West	Fimco Crescent (North Leg) and Fimco Crescent (South Leg)	Anytime
Fimco Crescent	North/West/North	Delray Drive (north leg) and Delray Drive (south leg)	Anytime
65M-4432			
Mario Avenue	North	Moss Creek Boulevard and Willow Heights Boulevard	Anytime
Lucio Avenue	Both	Moss Creek Boulevard and Willow Heights Boulevard	Anytime
65M-4479			
Gordon Landon	West	In its entirety	Anytime
Northvale Road	North	Lane Y and 182 Northvale Road	Anytime
Northvale Road	North	196 Northvale Road and Lane 108	Anytime
Northvale Road	South	Lane Y and 181 Northvale Road	Anytime
Northvale Road	South	193 Northvale Road and Lane 105	Anytime
Tibury Gate	North	Lane X and Lane 105	Anytime

COLUMN 1 COLUMN 2 COLUMN 3 COLUMN 4
LOCATION SIDE(S) BETWEEN PROHIBITED
TIME OR DAY

Southampton Avenue	South	In its entirety	Anytime
Frank Ash Street	South	In its entirety	Anytime
Arthur Dixon Street 65R-32850	East	In its entirety	Anytime
Prince Regent Street	East	Betty Roman Boulevard and Pope John Paul II Square	Anytime
Prince Regent Street	West	Betty Roman Boulevard and 70m North of Betty Roman Boulevard	Anytime
Prince Regent Street	West	25m north of Pope John Paul II Square and Pope John Paul II Square	Anytime
Pope John Paul II Square/Anthony Roman Avenue	North	Prince Regent Street and 45m east of Alsop Ave.	Anytime

- The By-Law shall come in and force and effect upon receiving the third reading by the Council of the City of Markham and also when authorized signs have been erected.

READ A FIRST, SECOND AND THIRD TIME AND PASSED THIS _____ DAY OF _____, 2018.

 KIMBERLY KITTERINGHAM
 CITY CLERK

 FRANK SCARPITTI
 MAYOR

COLUMN 1
LOCATION

COLUMN 2
SIDE(S)

COLUMN 3
BETWEEN

COLUMN 4
PROHIBITED
TIME OR DAY