



Downtown Markham - Block 12

Northwest Corner of Verdale Crossing and Birchmount Road

PLAN 24 197692

Ruland Properties Inc.

The Remington Group

City of Markham

Development Services Public Meeting

March 18th, 2025



The Remington Group
7501 Keele Street, Suite 100
Vaughan, ON L4K 1Y2



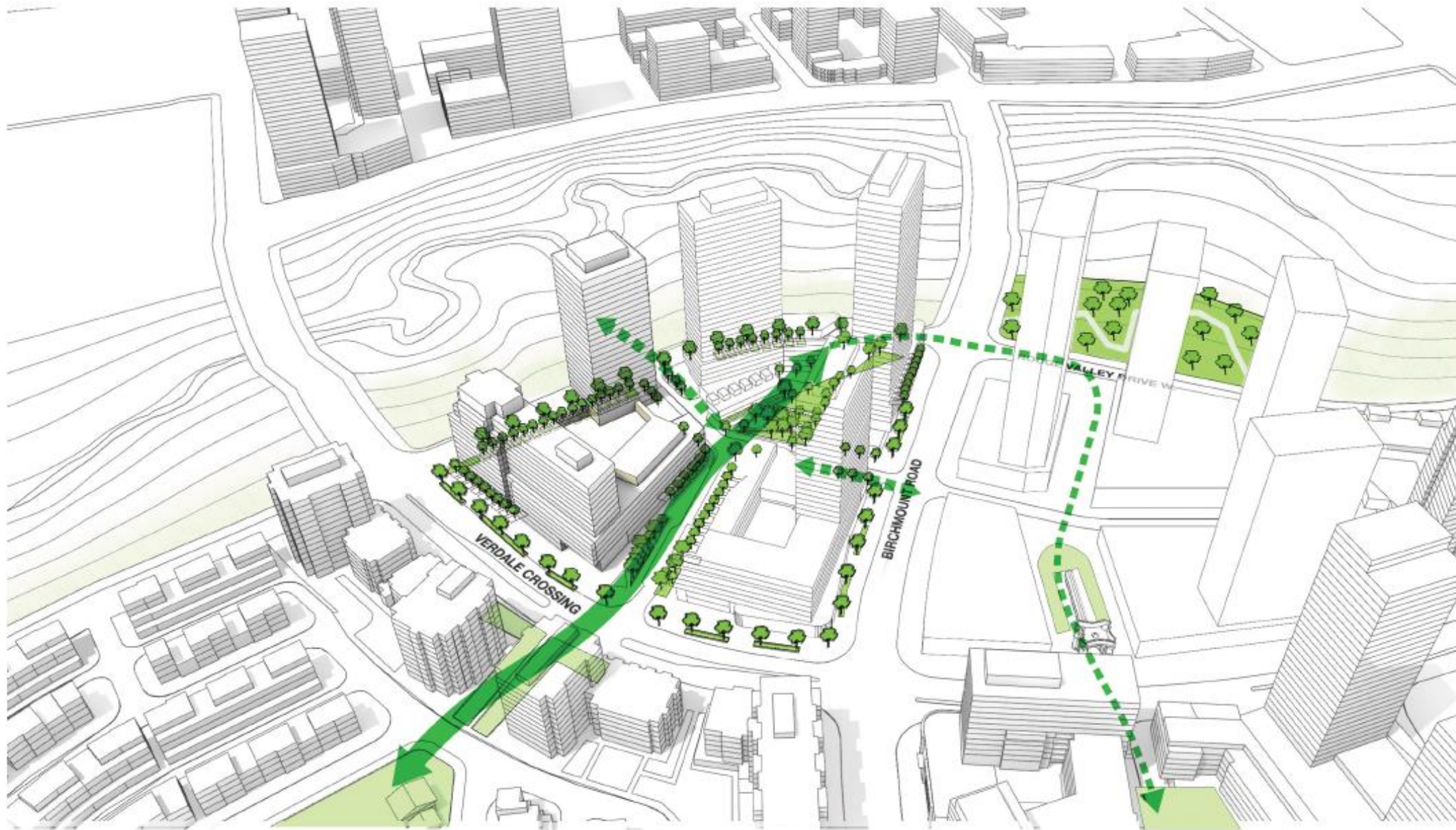
Site Context Plan



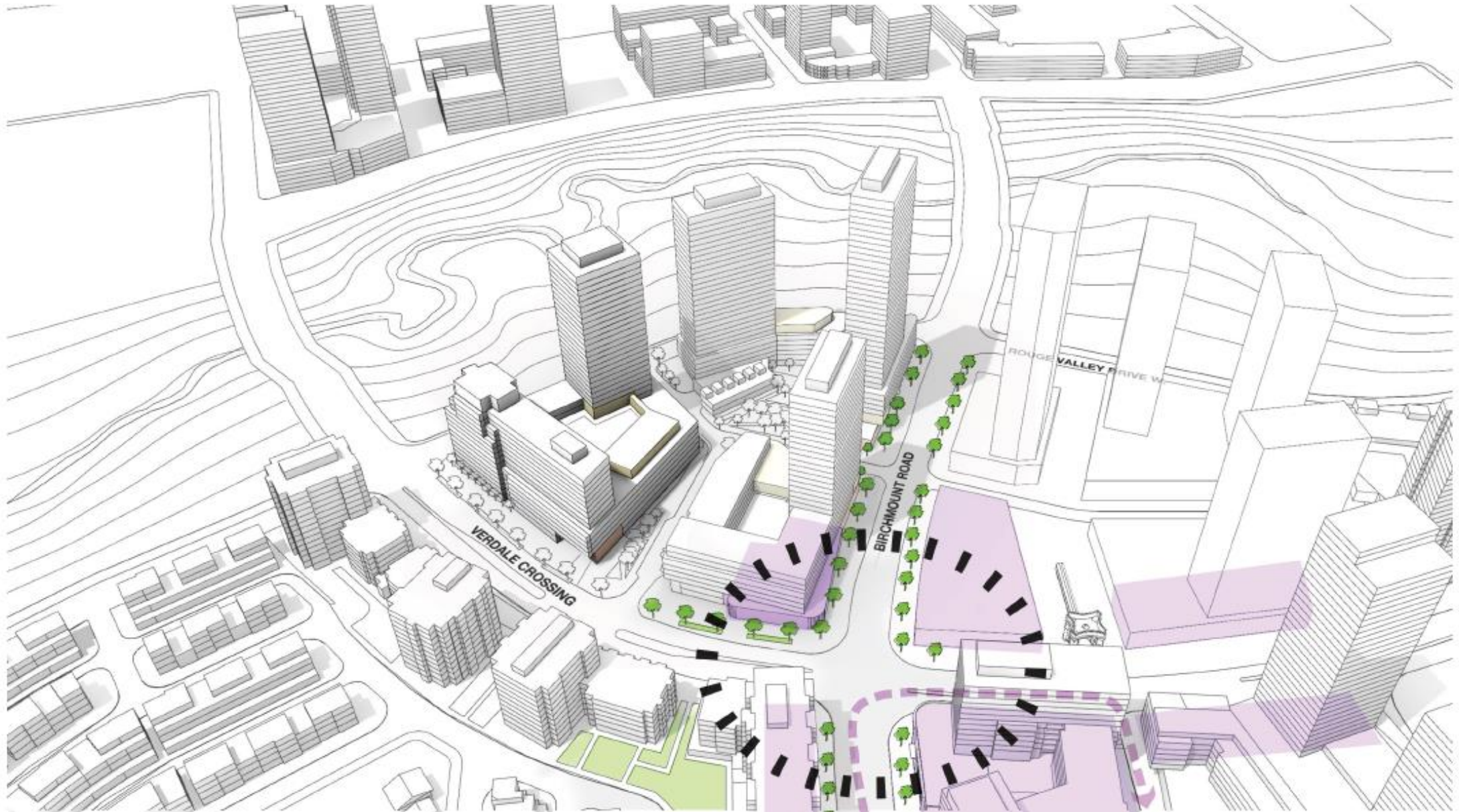
Block Plan



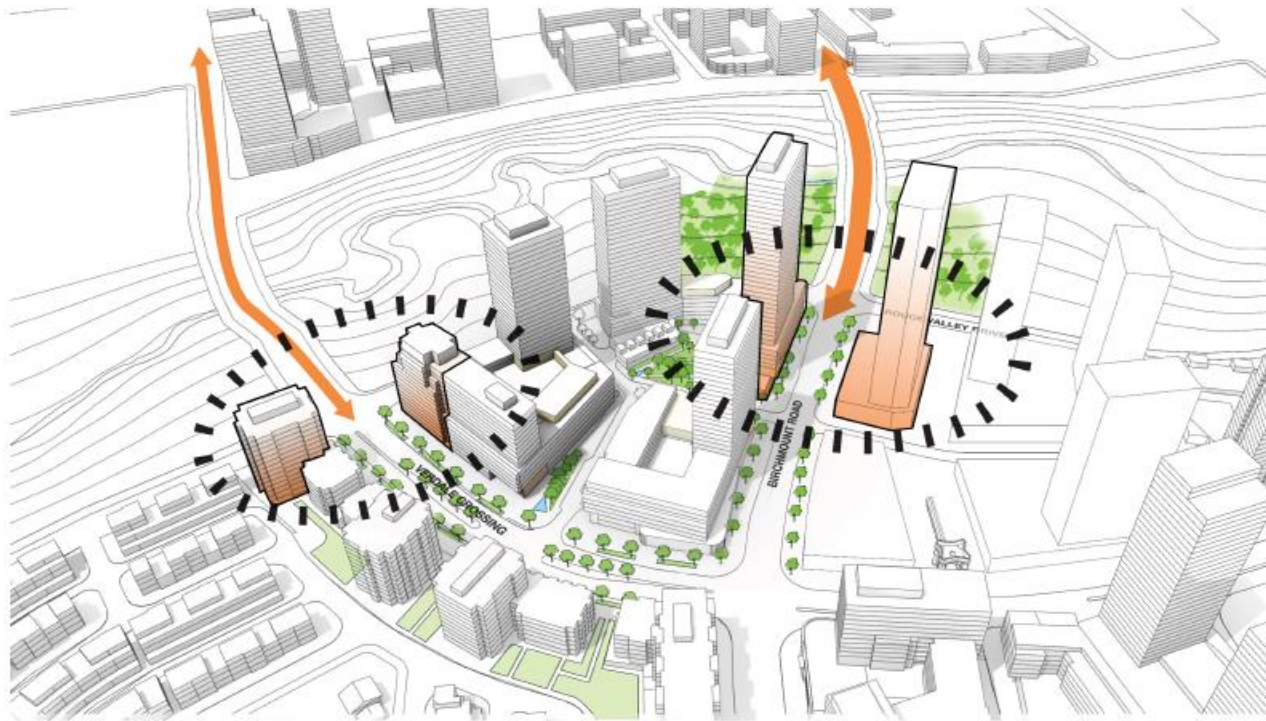
Connections



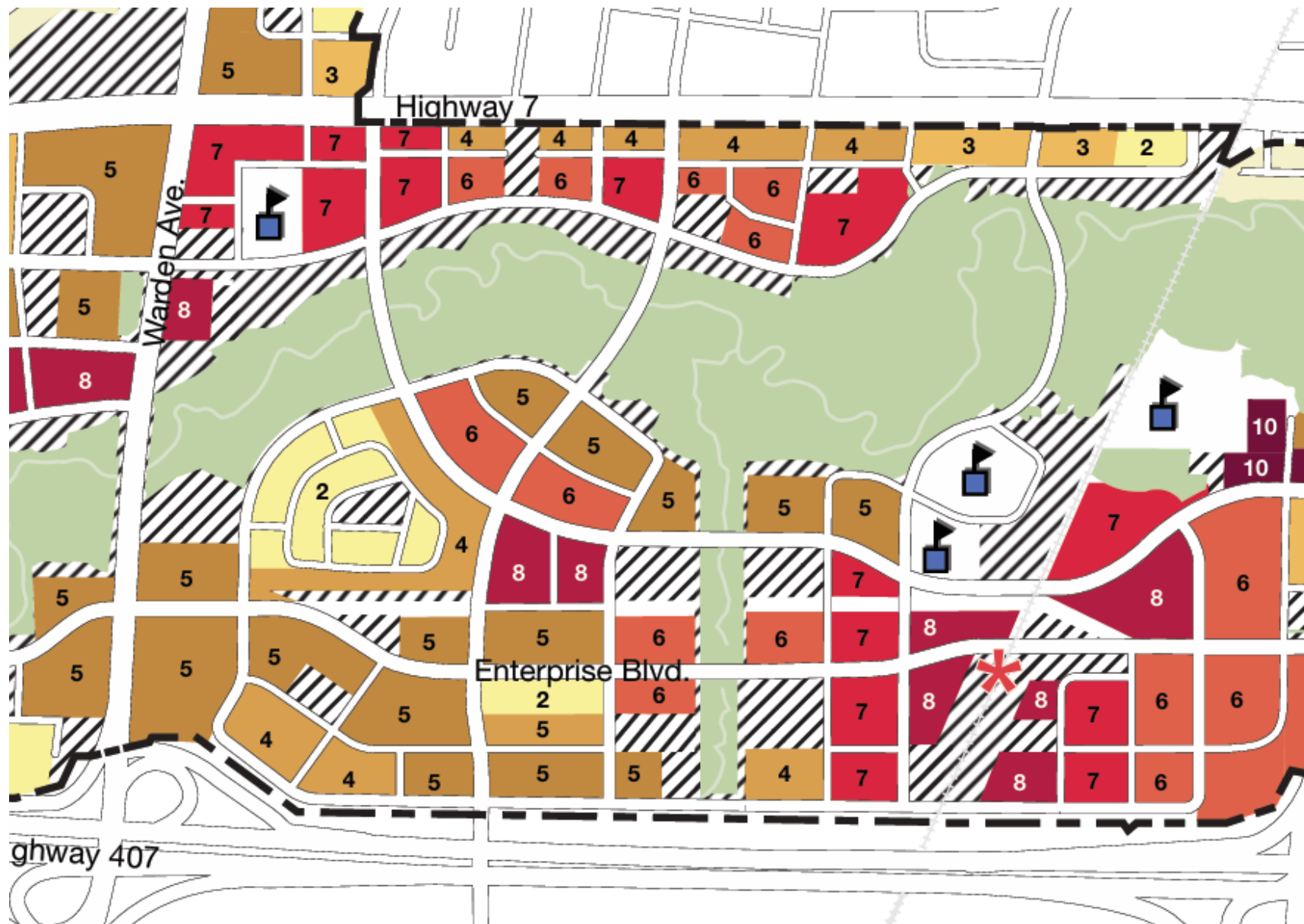
Pedestrian Connections and Green Network



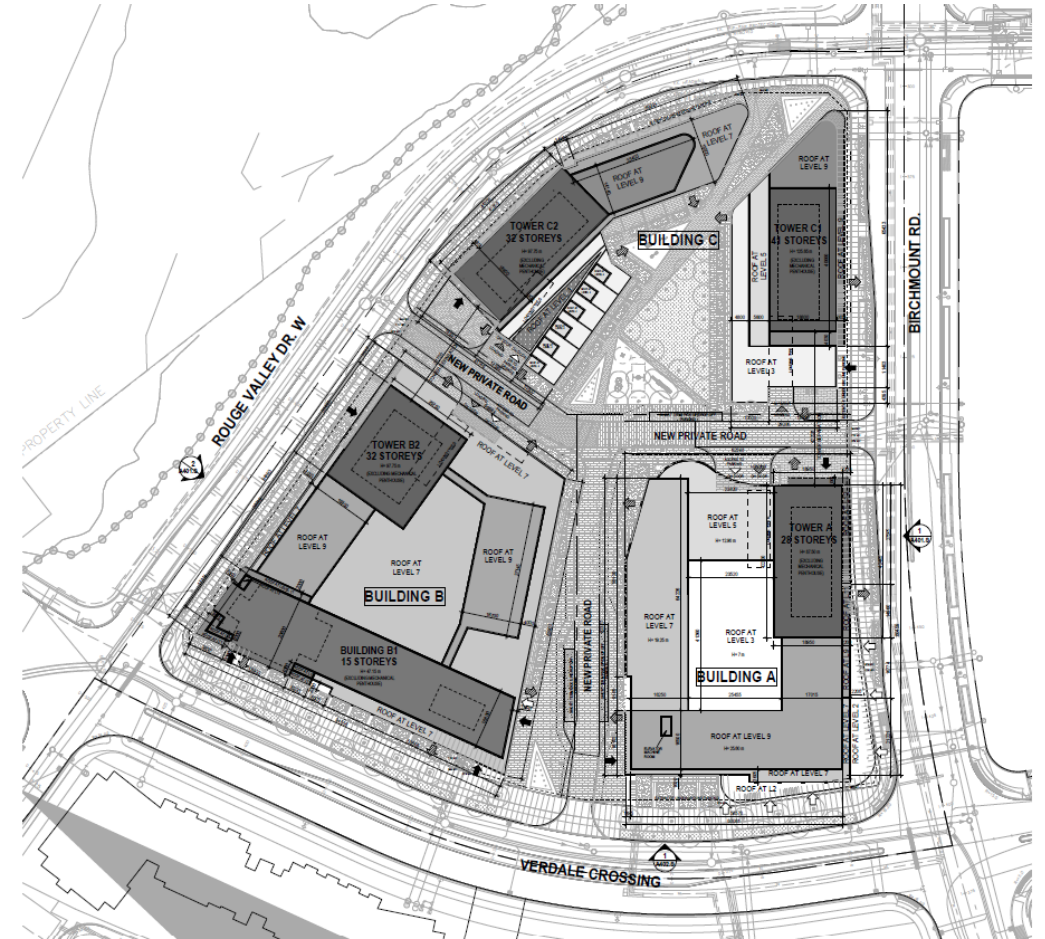
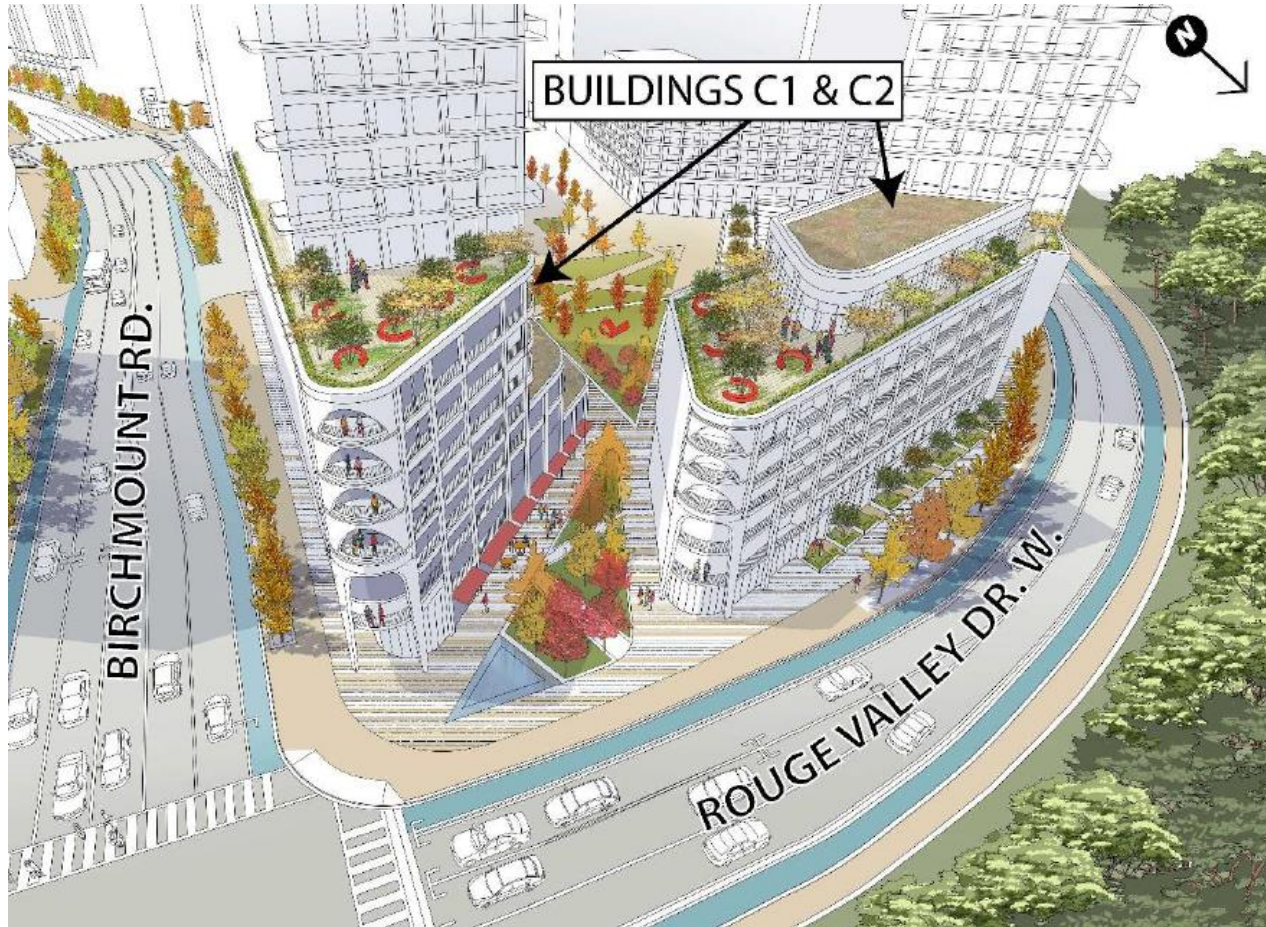
Retail Node



Tower Placement and Heights



Markham Centre – Secondary Plan Development



Site Plan