



Building K2

190 Enterprise Boulevard

18 Andre DeGrasse Street

15 155470 SPC

Signature Tower Residence Inc.

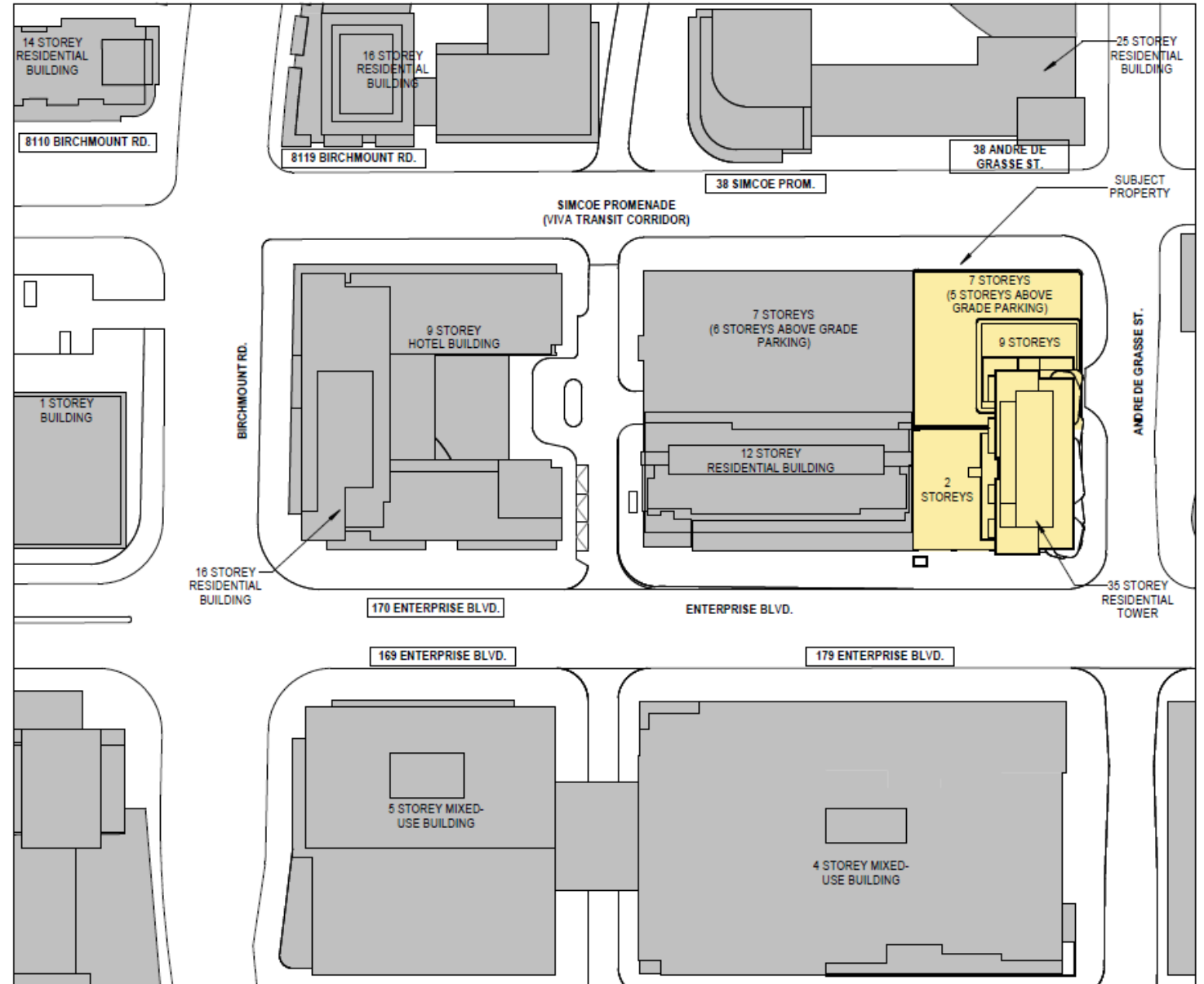
The Remington Group

City of Markham Development Services Committee

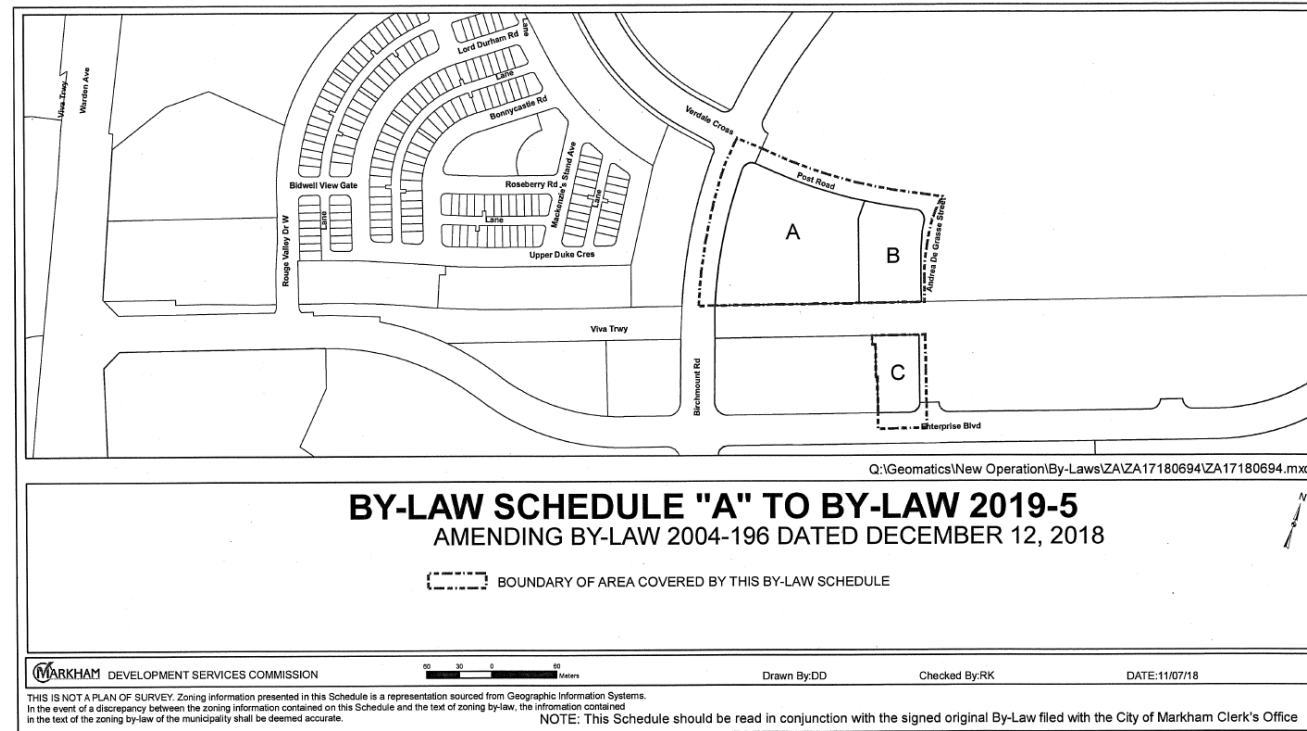
January 27, 2025



The Remington Group
7501 Keele Street, Suite 100
Vaughan, ON L4K 1Y2



Context Plan



- Application for Site Plan Control originally submitted in 2015
- Zoning By-law Amendment was passed in 2018 along with Gallery Square and Towers
- Site Plan review is well underway (3rd submission)

Tower Storeys/Height

- 35 Storeys/114.0m from established grade

335 Residential Units

- 1 Bedroom: 111 (33%)
- 1 Bedroom + Den: 99 (30%)
- 2 Bedroom: 85 (25%)
- 2 Bedroom + Den: 40 (12%)

Average Unit Size: 632 sf

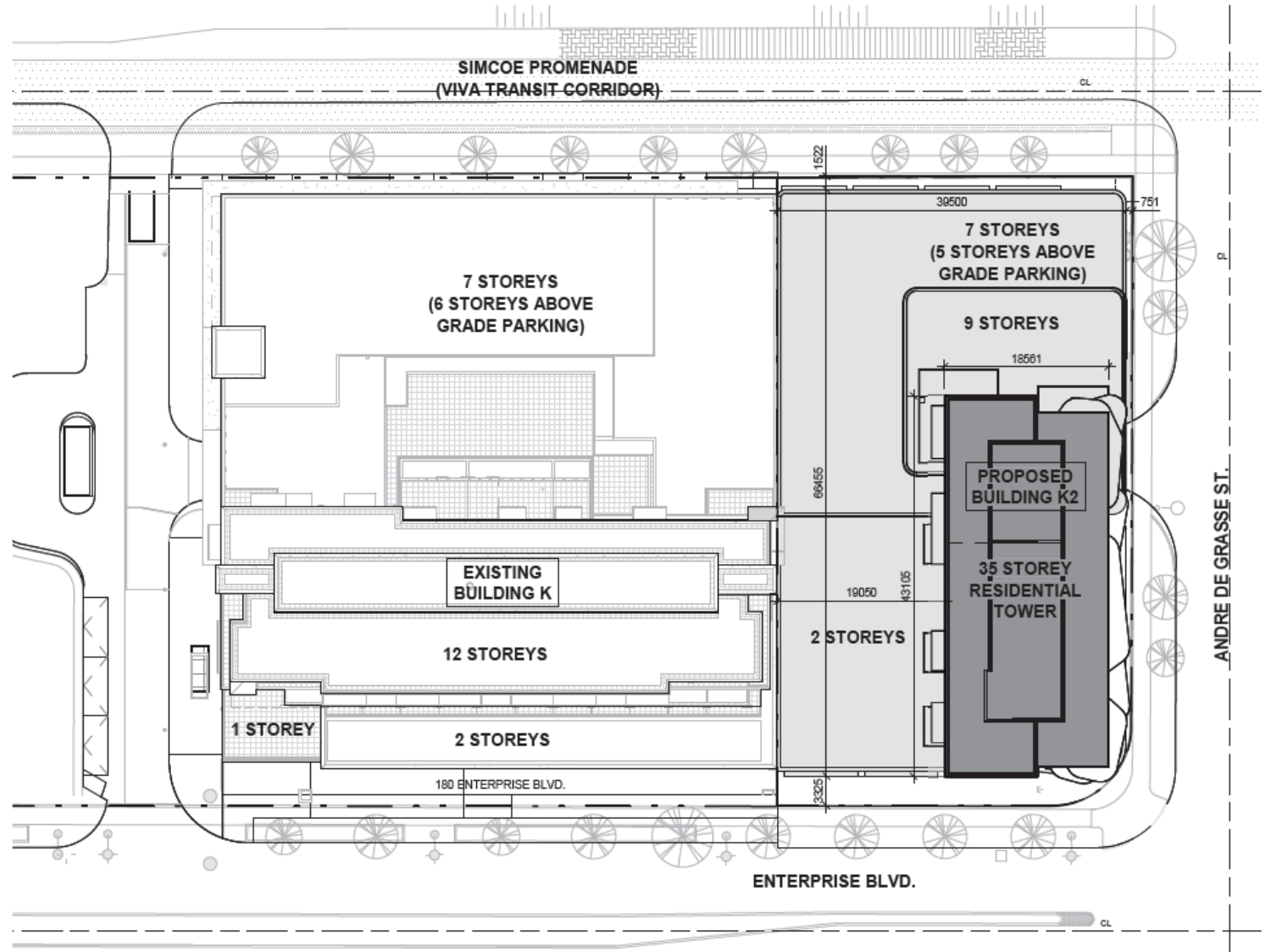
310 Parking Spaces Provided (0.92)

- 268 Resident Parking Spaces (0.80)
- 42 Visitor Parking Spaces (0.12)

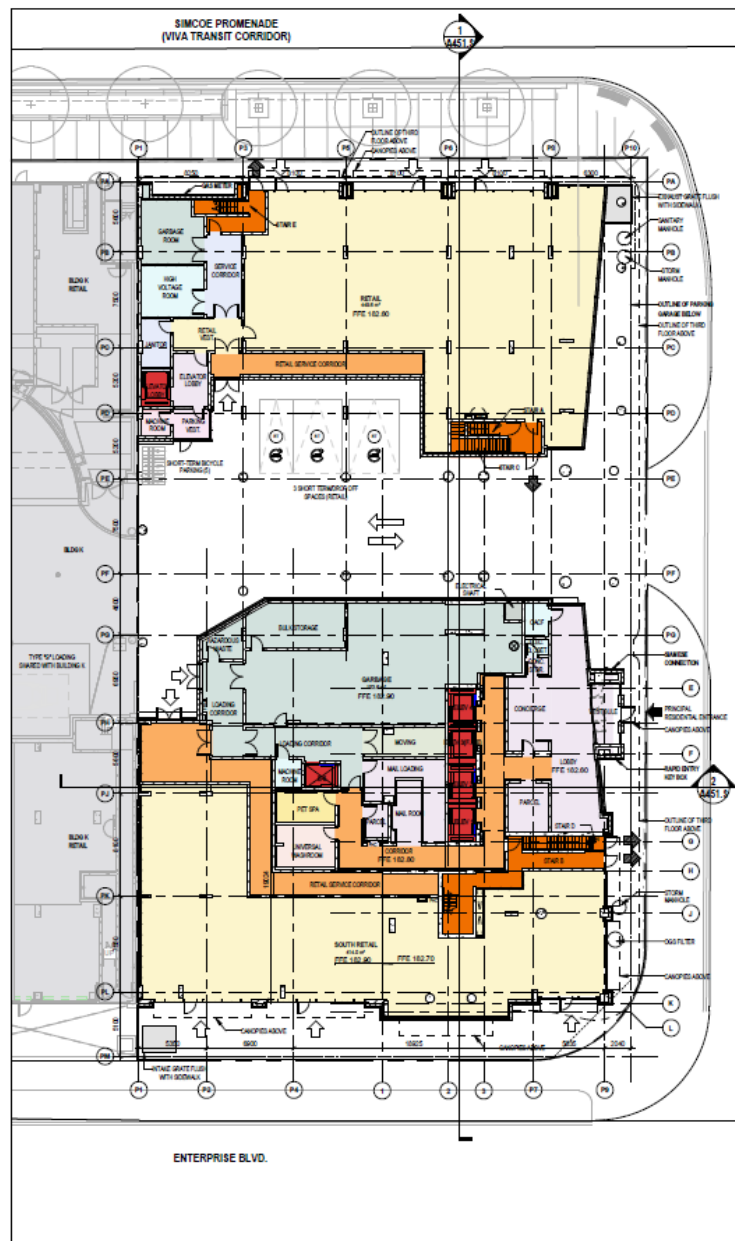
335 Bicycle Lockers

391,600 sf of Floor Area

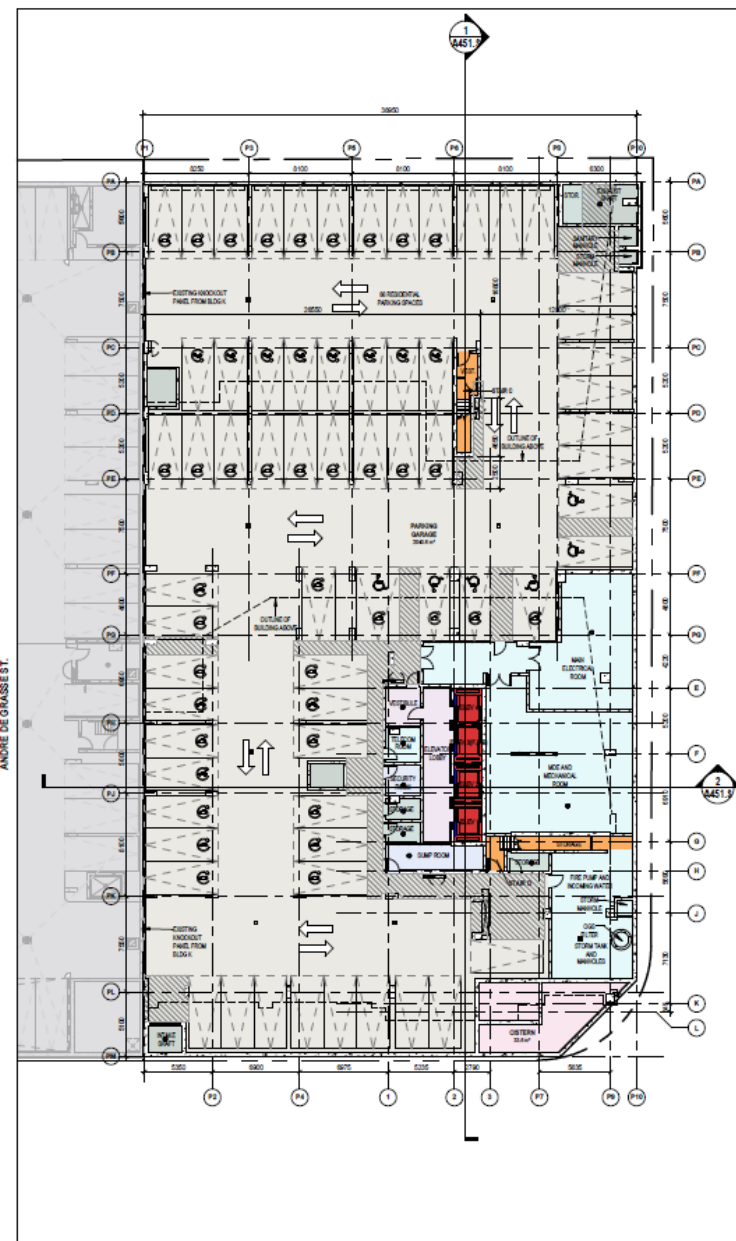
- 263,000 sf of Residential Net Floor Area
- 15,000 sf of Retail Area on Ground and Second Floors
- 16,000 sf of outdoor/indoor amenity space



Building Statistics



2 GROUND FLOOR - SPA
SCALE 1:200

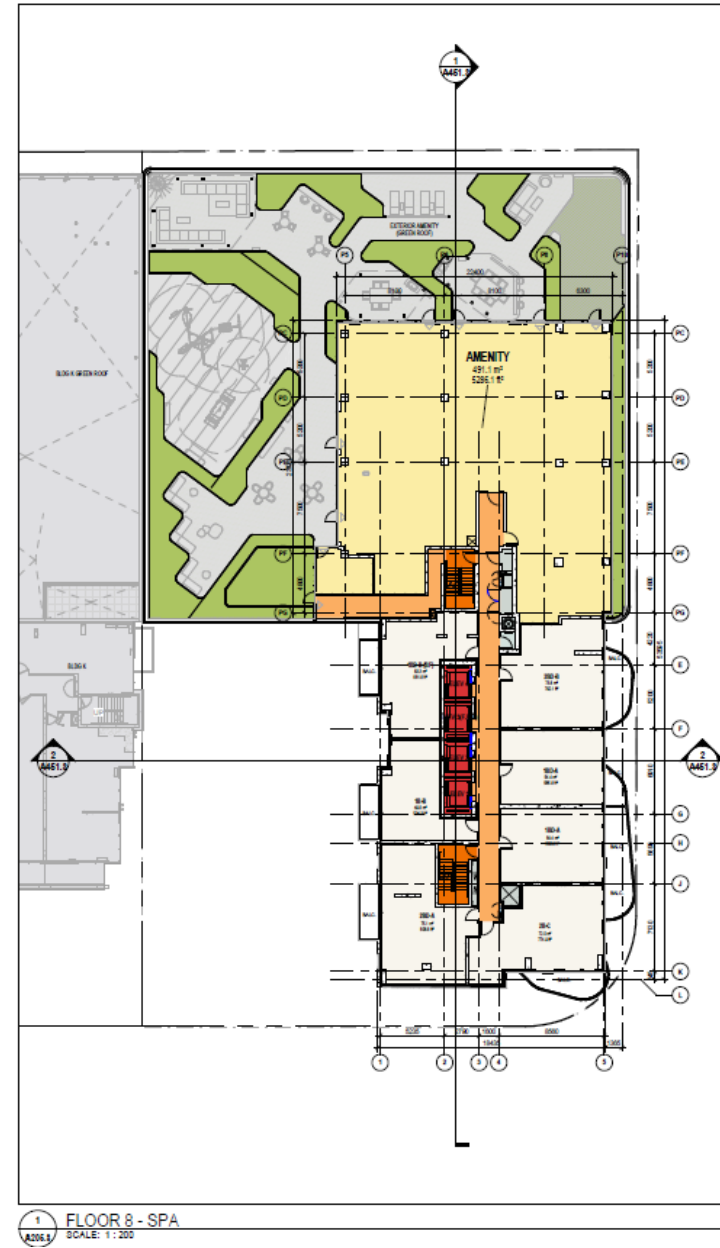
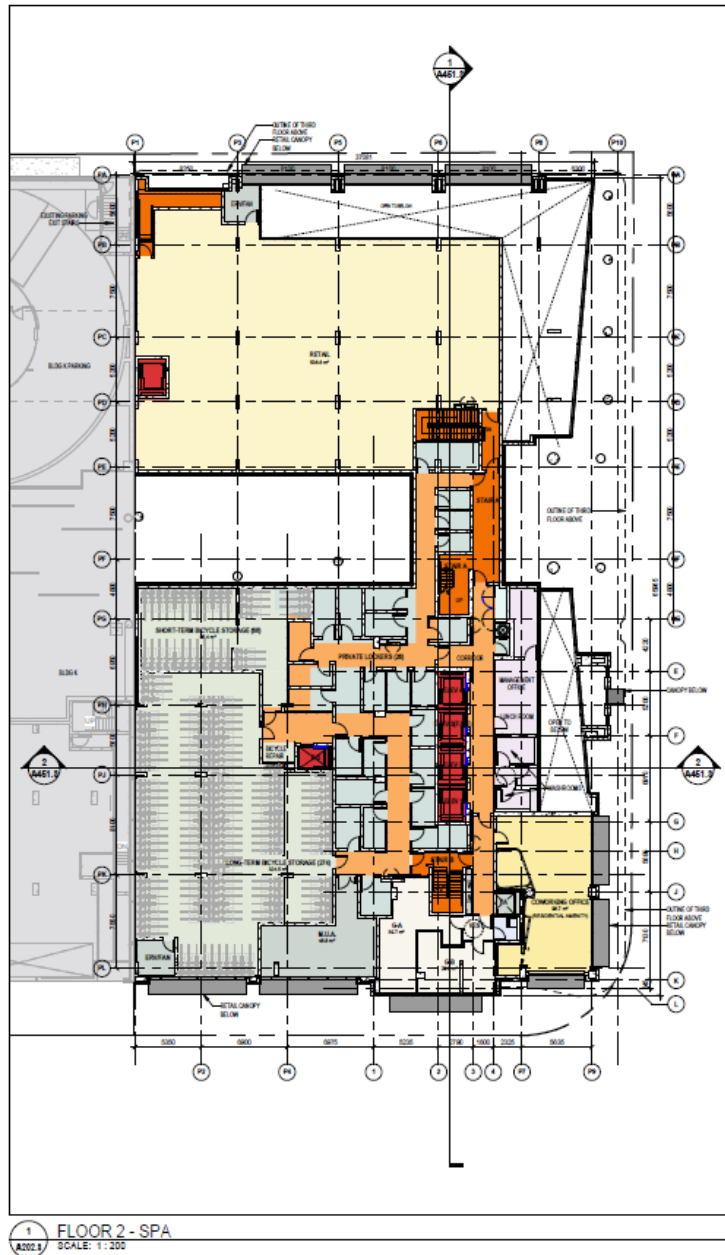


1 P1 UNDERGROUND - SPA
SCALE 1:200

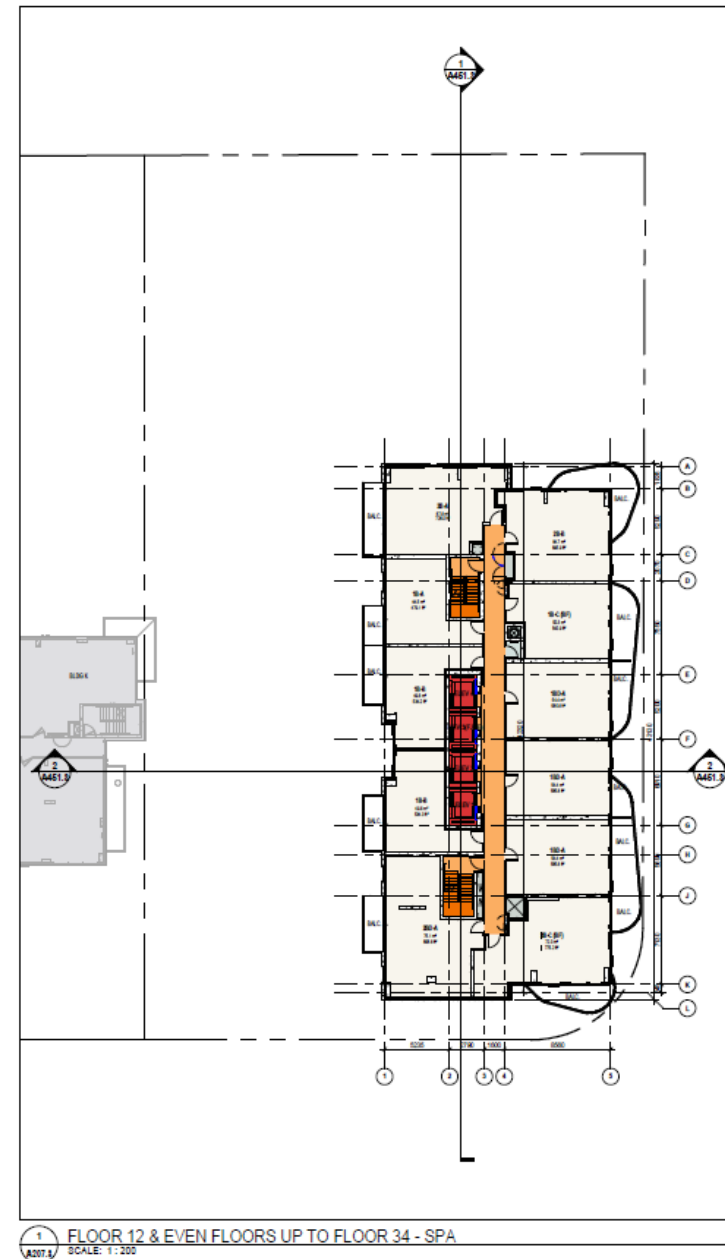
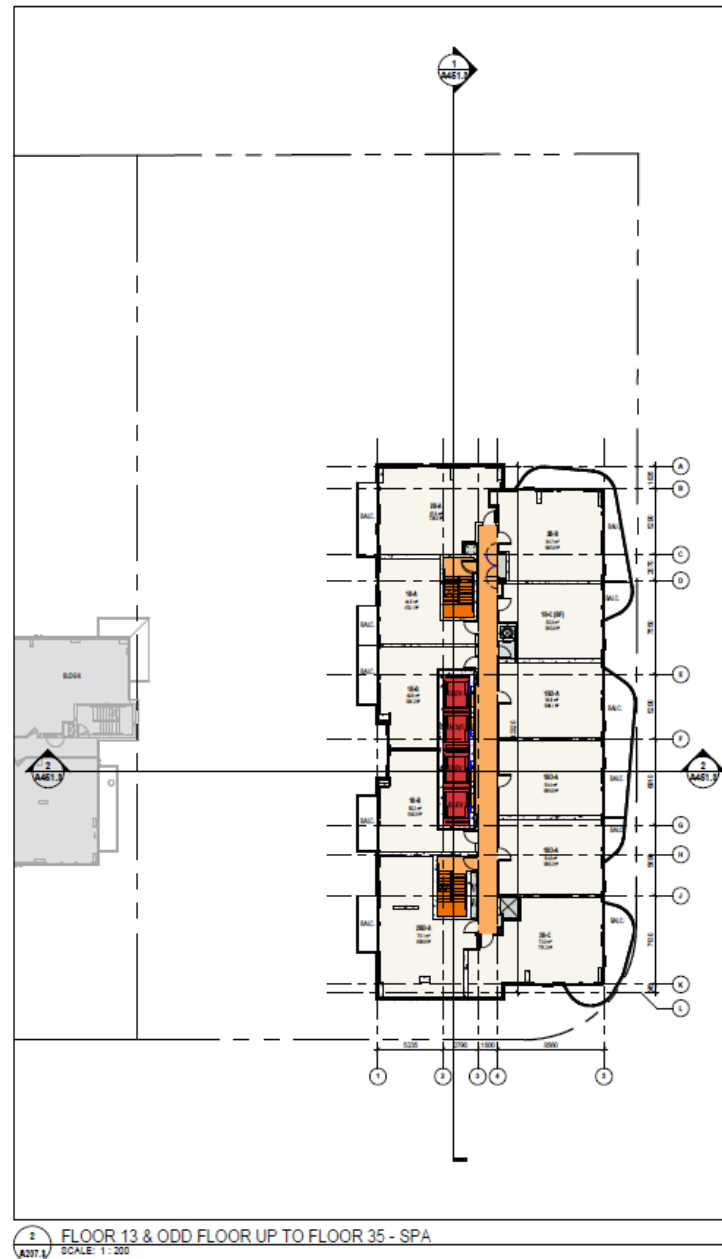
P1 Underground and Ground Floor Plans



Entrance on Andre DeGrasse
Street



Floor 2 and Floor 8



Floors 12 to 35



Views from Andre DeGrasse
Street



Above Grade Parking Garage