

An architectural rendering of a modern, multi-story residential building with a brick and stone facade, multiple balconies, and dormer windows. A large red speech bubble is overlaid on the left side of the image. The text is centered over the building.

Development Services Committee Public Meeting

7810, 7822, 7834 & 7846 McCowan Road
City of Markham

File Nos. PLAN 22 247284 & PLAN 21 129900

July 16, 2024

Locational Context



Previous Proposals



July 2021 Site Plan



January 2023 Site Plan

Key Concept Changes



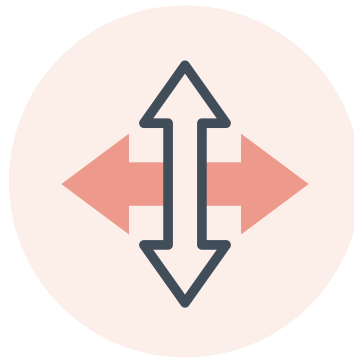
Townhouse Typology



Affordability & Tenure



Amenity & Green Space

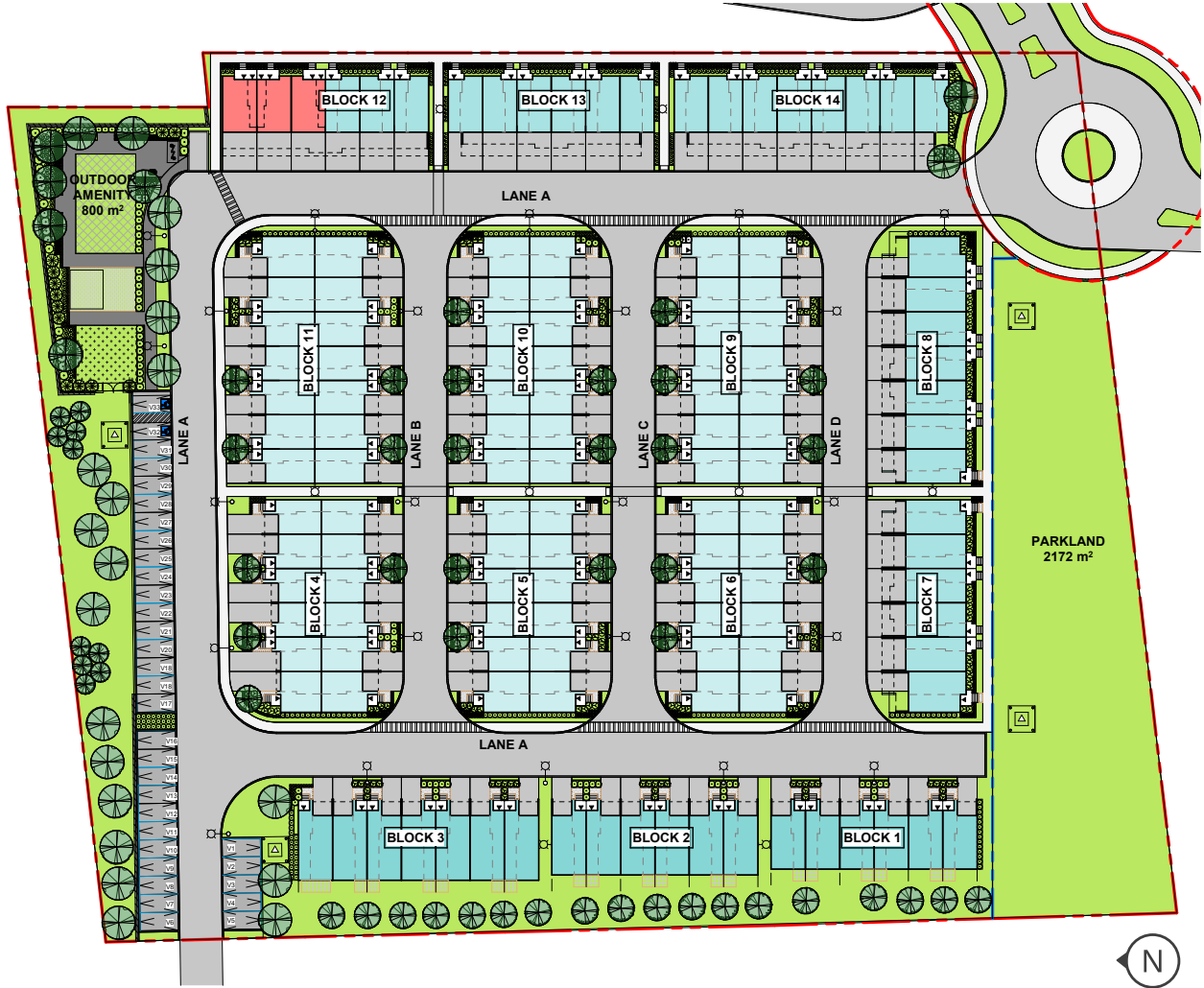


Pedestrian and Vehicular
Circulation

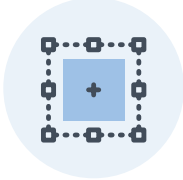


Site Boundary

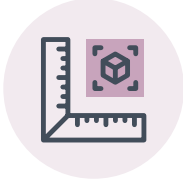
Revised Development Proposal



May 2024 Site Plan



Site Area
2.13 ha (21,332 m²)



Density
63 units/ha



Unit Mix
49 Townhouse units (traditional & rear-lane)
78 Back-to-Back units
6 Stacked units (affordable)

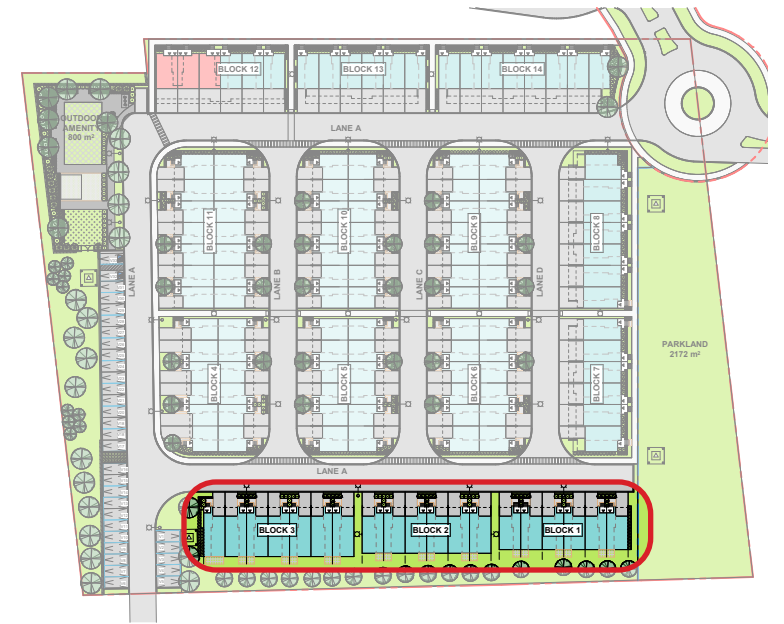


Outdoor Amenity Space
800m²



Parkland Dedication
0.217 ha

Architectural Rendering - Traditional Townhouse Units



Provided by MAR Architect Inc.

Architectural Rendering - Rear-Lane Townhouse Units

Front Elevation



Rear Elevation

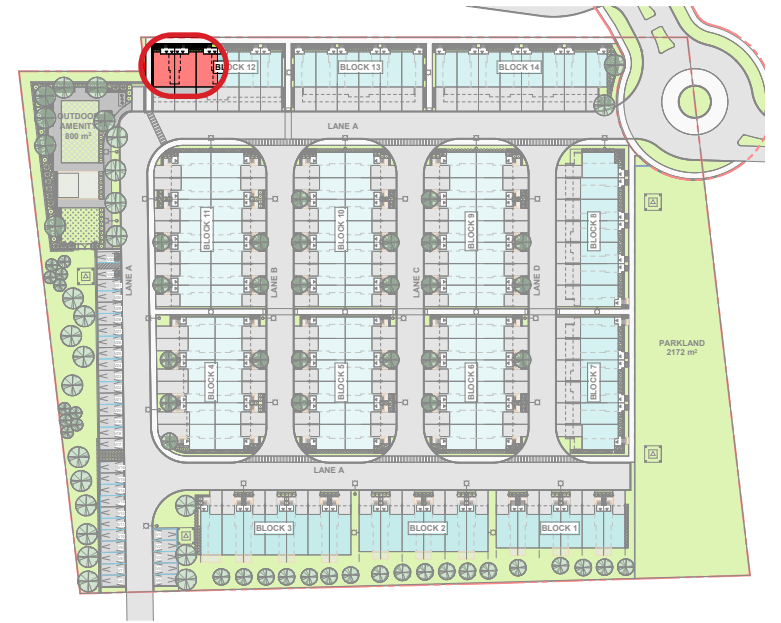


Architectural Rendering - Back-to-Back Townhouse Units



Provided by MAR Architect Inc.

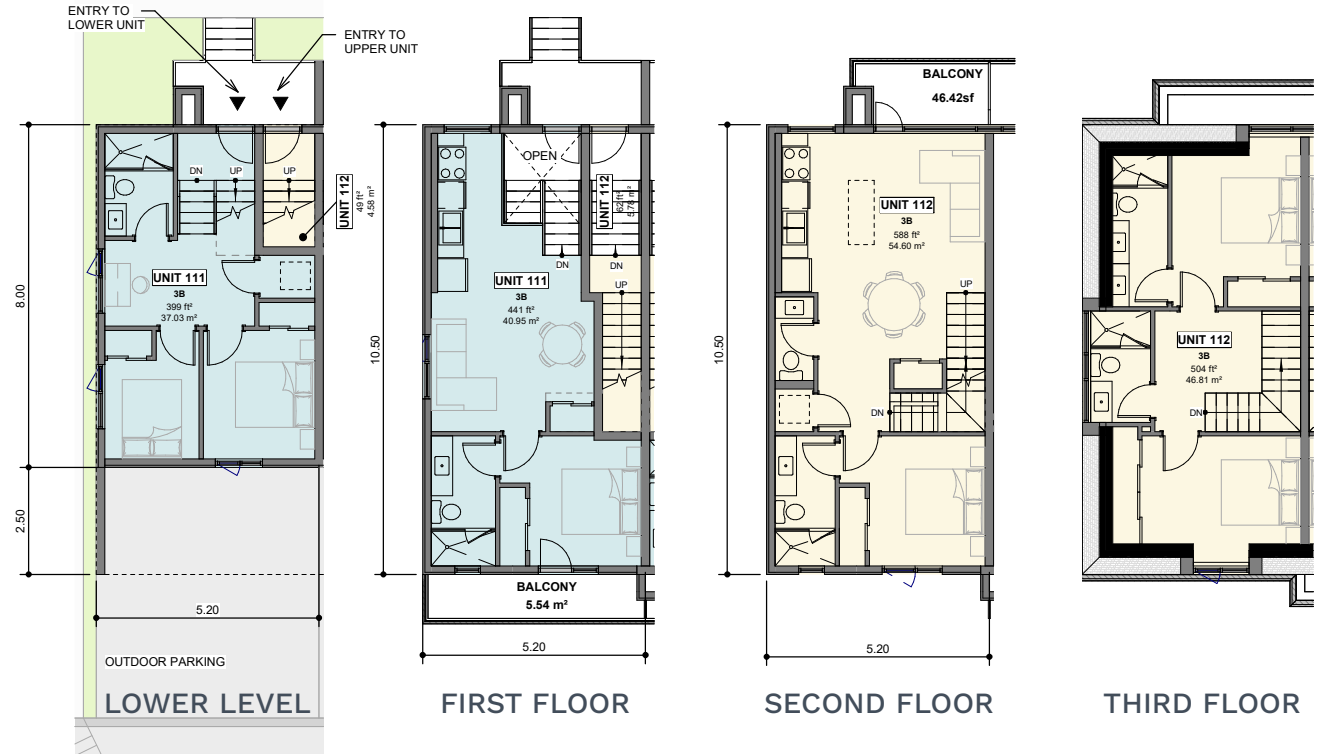
Architectural Rendering - Stacked Townhouse Units



Stacked Townhouse Units



Section

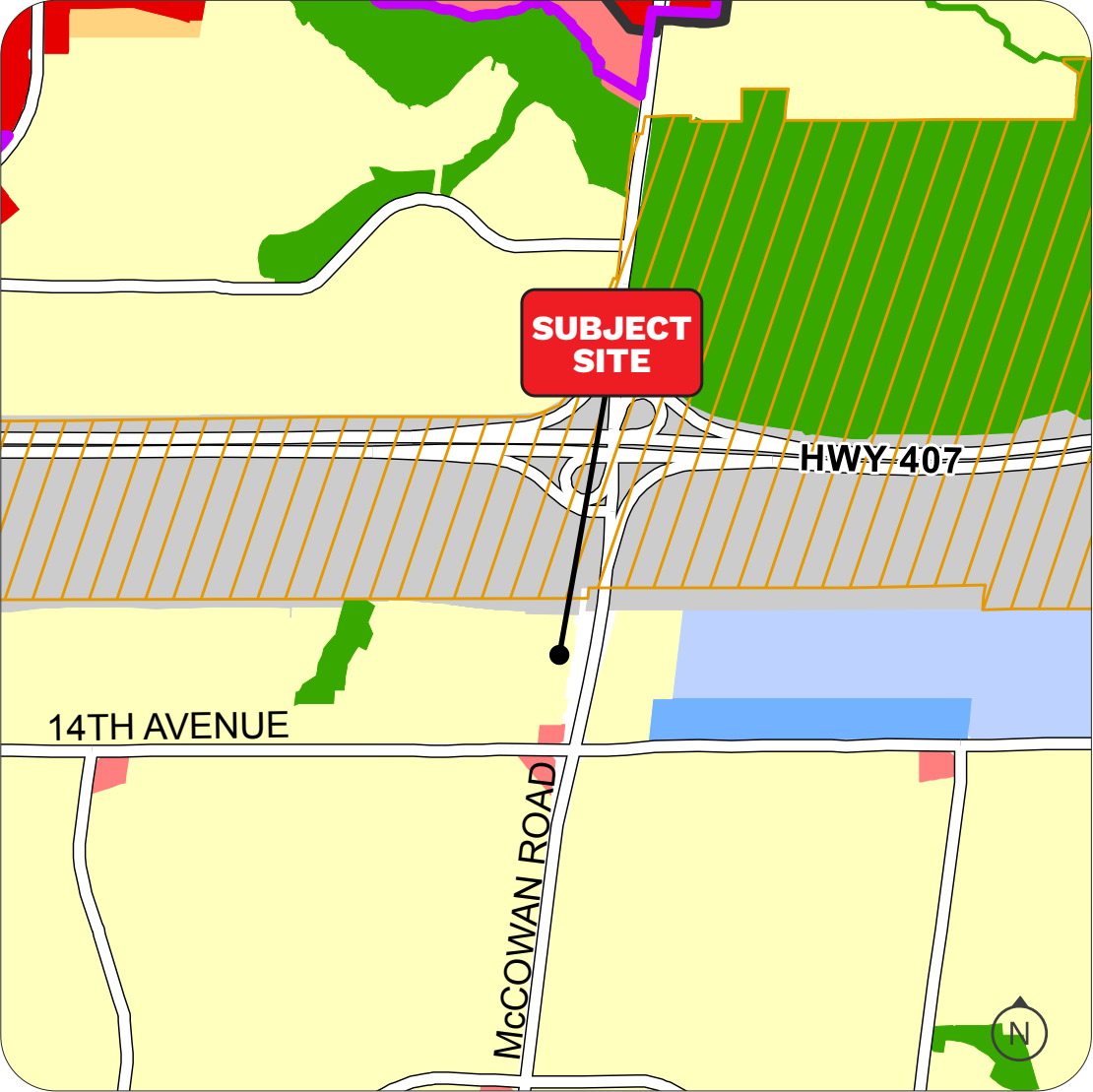


Floor Plans

A modern, multi-story brick townhome building with a dark roof and dormer windows. The building features large windows, balconies with black railings, and a car parked in front. The scene is set against a clear blue sky with some greenery in the foreground.

Thank you!
Questions or Comments?

Local Policy Context



Legend

- Greenway
- Countryside
- Hamlets
- Transportation and Utilities
- Parkway Belt West
- Private Open Space
- Residential Estate
- Residential Low Rise
- Residential Mid Rise
- Residential High Rise
- Mixed Use Low Rise
- Mixed Use Mid Rise
- Mixed Use High Rise
- Mixed Use Office Priority
- Mixed Use Health Care Campus
- Mixed Use Heritage Main Street
- Commercial
- Business Park Employment
- Business Park Office Priority Employment
- Service Employment
- General Employment
- Intensification Area
- Future Urban Area
- Future Neighbourhood Area
- Future Employment Area
- Secondary Plan Area Specific Policy
- Deferral Area