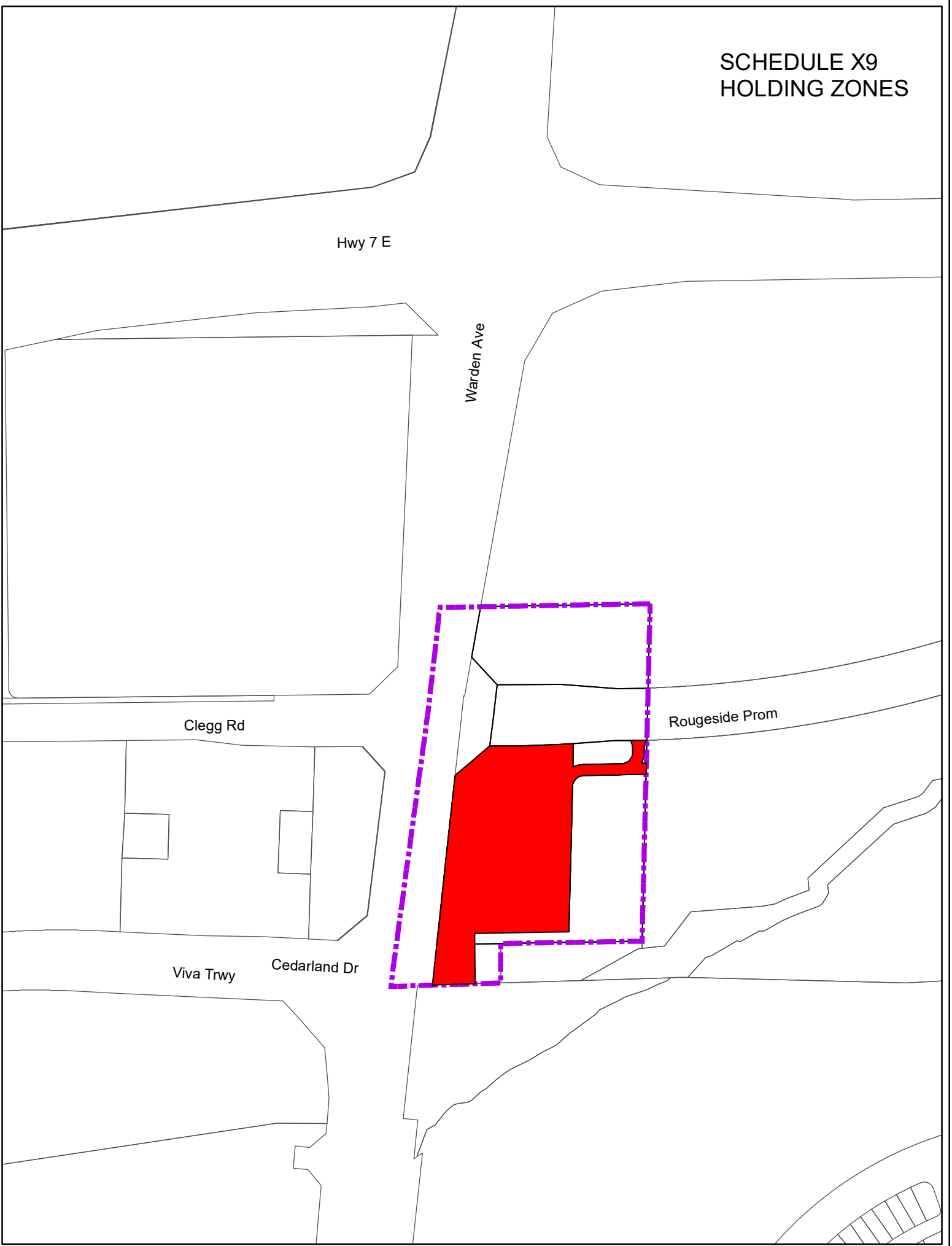


SCHEDULE X9
HOLDING ZONES



DEVELOPMENT SERVICES COMMISSION

A BY-LAW TO AMEND BY-LAW 2004-196



BOUNDARY OF AREA COVERED BY THIS BY-LAW



H



Q:\Geomatics\New Operation\By-Laws\PR\2004-196\SU06135184 May 2021\Sche 'X9'\Sche X9.mxd

THIS IS SCHEDULE 'X9' TO BY-LAW.....

PASSED THIS DAY

..... MAYOR

..... CLERK

NOTE : 1) DIMENSIONS ARE IN METRES
2) REFERENCE SHOULD BE MADE TO THE ORIGINAL BY-LAW LODGE IN THE OFFICE OF THE CLERK

SCALE 1:2500