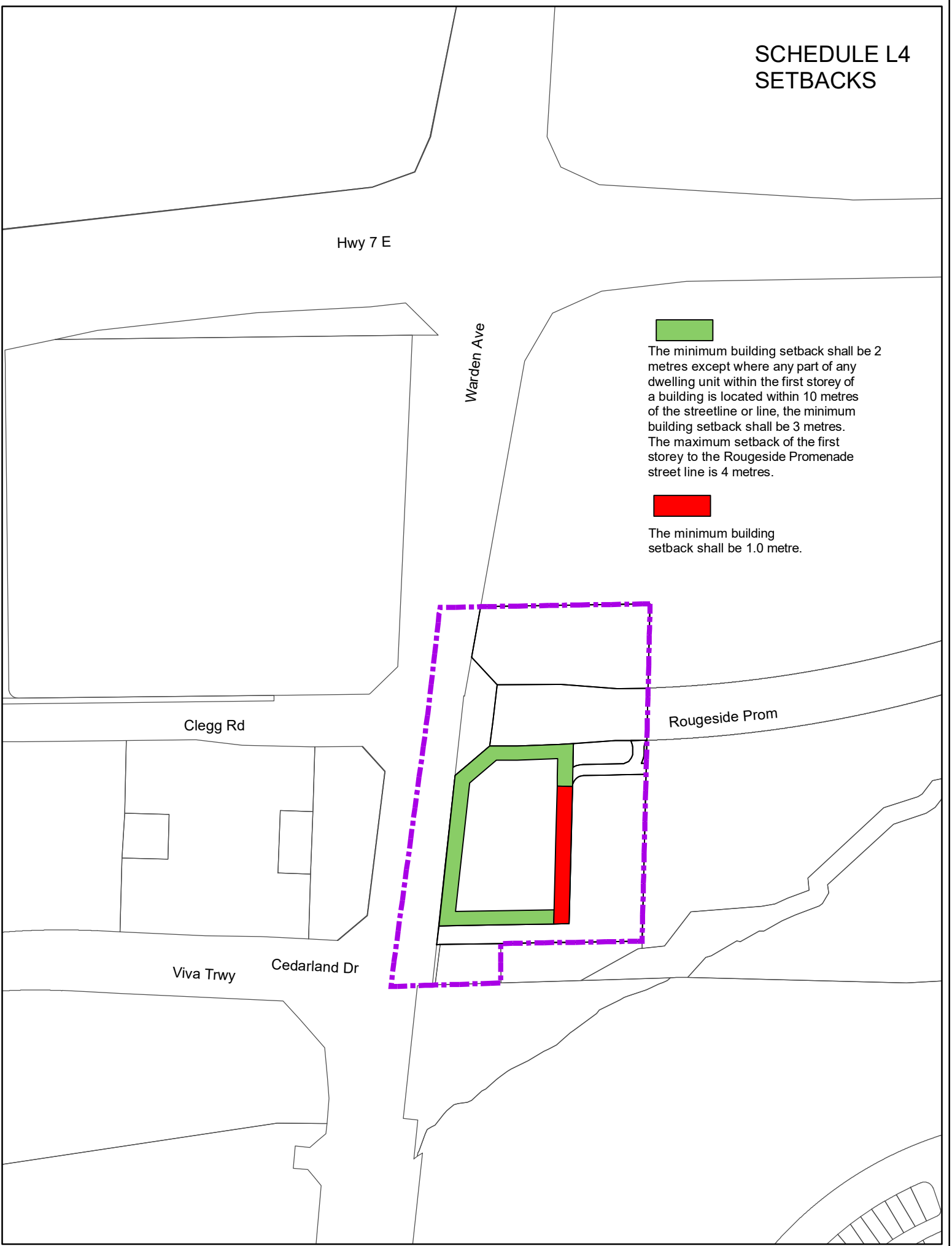




SCHEDULE L4 SETBACKS



 The minimum building setback shall be 2 metres except where any part of any dwelling unit within the first storey of a building is located within 10 metres of the streetline or line, the minimum building setback shall be 3 metres. The maximum setback of the first storey to the Rougeside Promenade street line is 4 metres.

 The minimum building setback shall be 1.0 metre.



DEVELOPMENT SERVICES COMMISSION

A BY-LAW TO AMEND BY-LAW 2004-196

 BOUNDARY OF AREA COVERED BY THIS BY-LAW



Q:\Geomatics\New Operation\By-Laws\PR\2004-196\SU06135184 May 2021\Sche 'L4\Sche L4.mxd

THIS IS SCHEDULE 'L4' TO BY-LAW.....

PASSED THIS DAY

..... MAYOR

..... CLERK

NOTE : 1) DIMENSIONS ARE IN METRES
2) REFERENCE SHOULD BE MADE TO THE ORIGINAL BY-LAW LODGE IN THE OFFICE OF THE CLERK

SCALE 1:2500