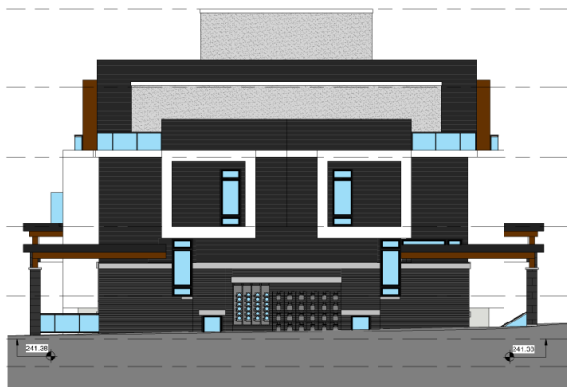




1 BLK 5,7,8 EAST ELEVATION  
A4.3 1/8" = 1'-0"



5 BLK 5,7,8 NORTH ELEVATION  
A4.3 1/8" = 1'-0"



2 BLK 5,7,8 WEST ELEVATION  
A4.3 1/8" = 1'-0"



3 BLK 5,7,8 SOUTH ELEVATION  
A4.3 1/8" = 1'-0"

## TYPICAL ELEVATION

### (Stacked and Back-to-back Townhouse Dwellings Blocks 5, 7 and 8)

APPLICANT: Livante Holdings (Victoria Square Woodbine) Inc.

FILE No. PLAN 20 112387

Z:\2023 Agenda\PLANIPLAN 20\_112387\Report Figures1.mxd