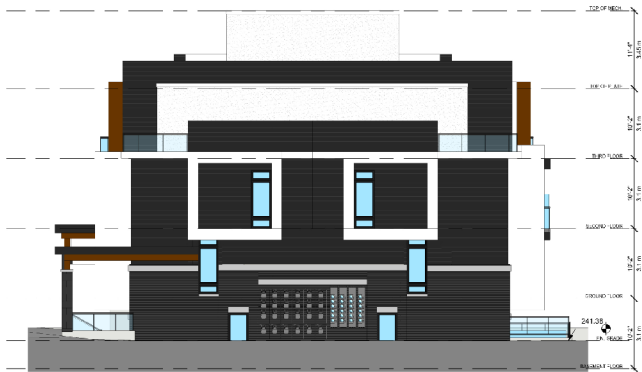




4 EAST ELEVATION (BLOCK 3,4,6)
1/8" = 1'-0"



3 NORTH ELEVATION (BLOCK 3,4,6)
1/8" = 1'-0"



2 WEST ELEVATION (BLOCK 3,4,6)
1/8" = 1'-0"



1 SOUTH ELEVATION (BLOCK 3,4,6)
1/8" = 1'-0"

TYPICAL ELEVATION (Stacked Townhouse Dwellings Blocks 3, 4 and 6)

APPLICANT: Livante Holdings (Victoria Square Woodbine) Inc.

FILE No. PLAN 20 112387

Z:\2023 Agenda\PLANIPLAN 20_112387\Report Figures1.mxd