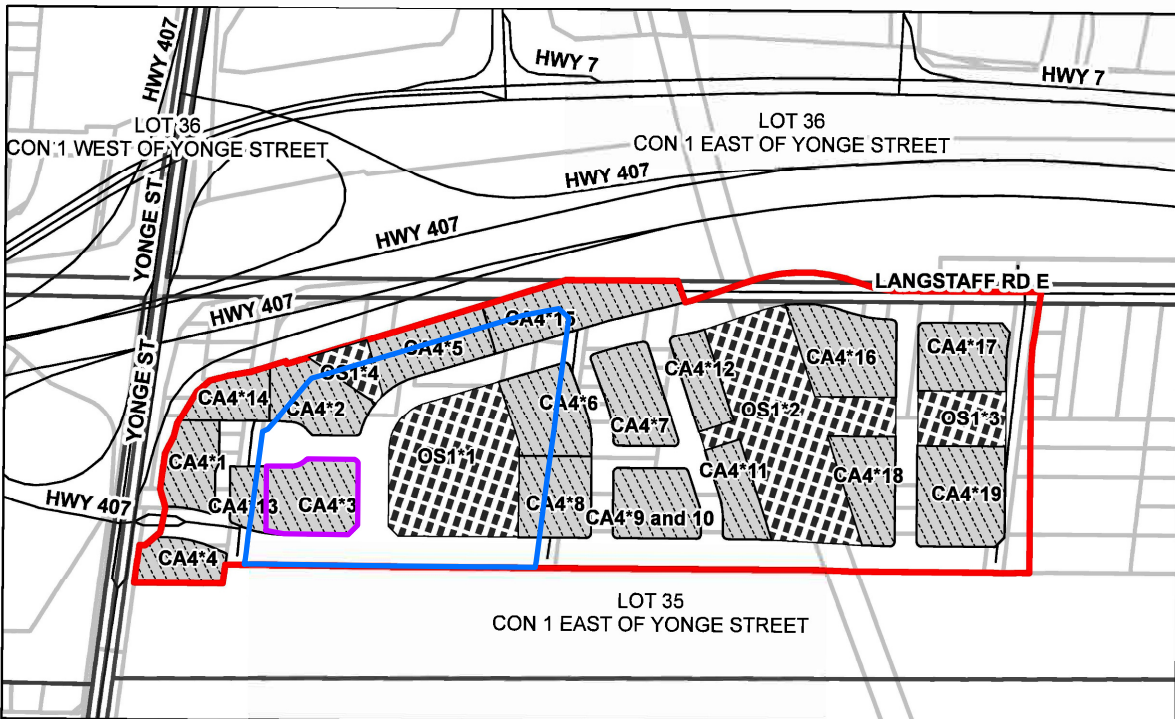


Part of Lots 35 and 36, Concession 1 (Markham); Lots 20, 27, 45, 48, 49, 98, 100, 104-107; Benson Ave, Ruggles Ave, and Cedar Ave; Part of Lots 8-16, 21, 28, 33-37, 39, 40, 41, 44, 46, 93, 94, 96, 97, 99, 101-103, Part of Church Street on Registered Plan 2386,
City of Markham, Regional Municipality of York



MAP No. 302

Map filed at the office of the Ontario Ministry of Municipal Affairs and Housing, 777 Bay St., Toronto, Ontario, Planning Act

Ontario Regulation: 345/22

Date: April 14, 2022

Original Signed By: Minister of Municipal Affairs and Housing

LEGEND

- Lands Subject to Zoning Order
- Community Amenity 4 Exception
- Open Space 1 Exception
- Lot & Concession
- Roads
- Parcels

0 45 90 180
Metres
1 cm equals 60 metres



Map North (Degrees): 18° E

THIS IS NOT A PLAN OF SURVEY
Information provided by the Ministry of Municipal Affairs and Housing, under licence with the Ministry of Natural Resources.
© 2022, Queen's Printer for Ontario.

Map Description:

This is map no. 302 referred to in a Minister's Zoning Order. It shows lands which are located in Part of Lots 35 and 36, Concession 1 (Markham); Lots 20, 27, 45, 48, 49, 98, 100, 104-107; Benson Ave, Ruggles Ave, and Cedar Ave; Part of Lots 8-16, 21, 28, 33-37, 39, 40, 41, 44, 46, 93, 94, 96, 97, 99, 101-103, Part of Church Street on Registered Plan 2386, City of Markham, Regional Municipality of York. We are committed to providing accessible customer service (<https://www.ontario.ca/page/accessible-customer-service-policy>).

On request, we can arrange for accessible formats and communications supports. Please contact MMAH by email (mininfo@ontario.ca) for regulation details.

O. REG. 345/22 - MAP NO. 302

APPLICANTS: RDG Gateway Tower One and Condor Properties Ltd.
Draft Plan of Subdivision 19TM-18006

FILE No.'s SPC 22 247842 & PLAN 22 264894

- SUBDIVISION LANDS
- BLOCK A LANDS