



Winter Maintenance of Regional Sidewalks and Active Transportation Infrastructure

Special General Committee

June 19, 2023

Alice Lam – Director of Operations
David Plant – Sr. Manager Parks Horticulture and Forestry
Steven Dollmaier – Sr. Manager Roads and Fleet

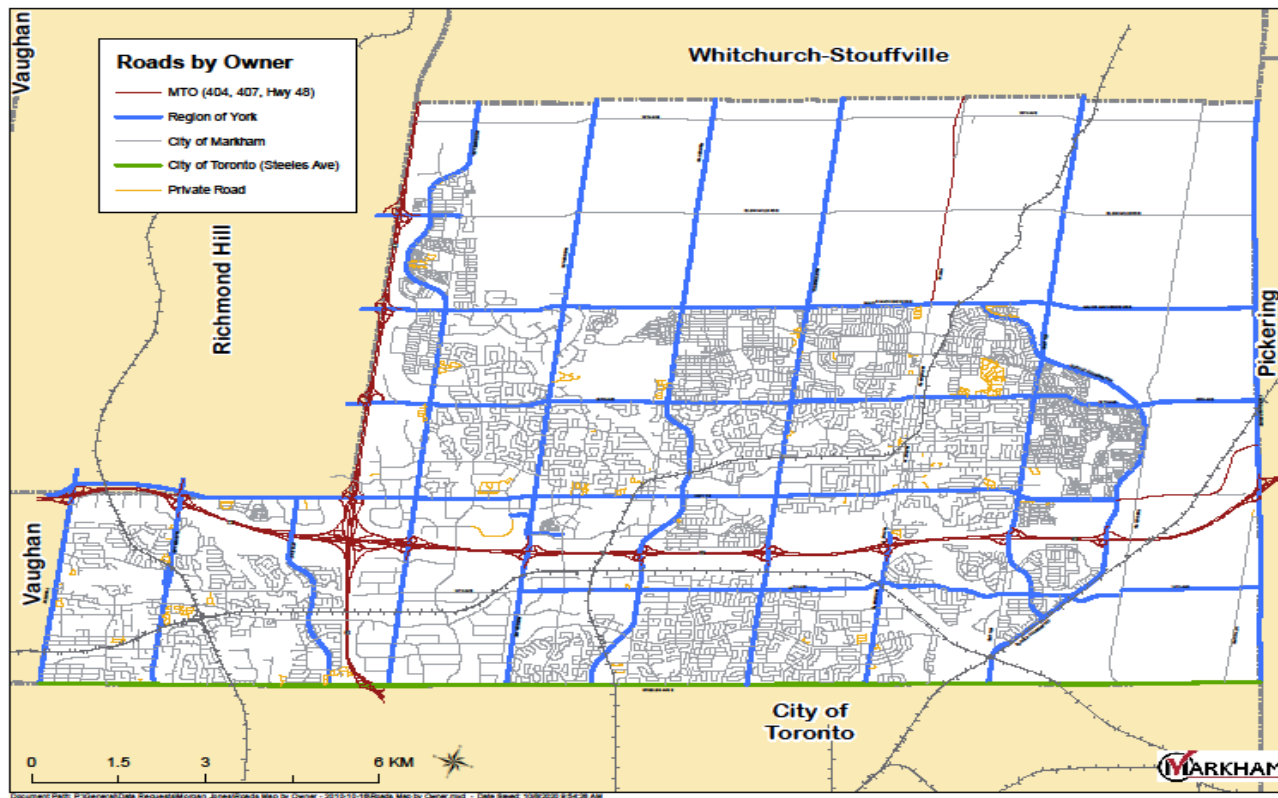


Purpose

- To review Regional Winter Maintenance Roles brought forward by Regional Councillor Linda Jackson of the City of Vaughan.
- To confirm the position of the City of Markham as one of the 9 lower tier municipalities regarding the Region assuming winter maintenance of sidewalks adjacent to Regional roads



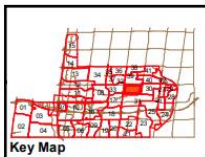
Jurisdiction of Roads and Sidewalks Within the City of Markham





Primary and Secondary Sidewalk Network Service Levels

Sidewalks 2022-23
Route 32
DEFERARRI



Legend

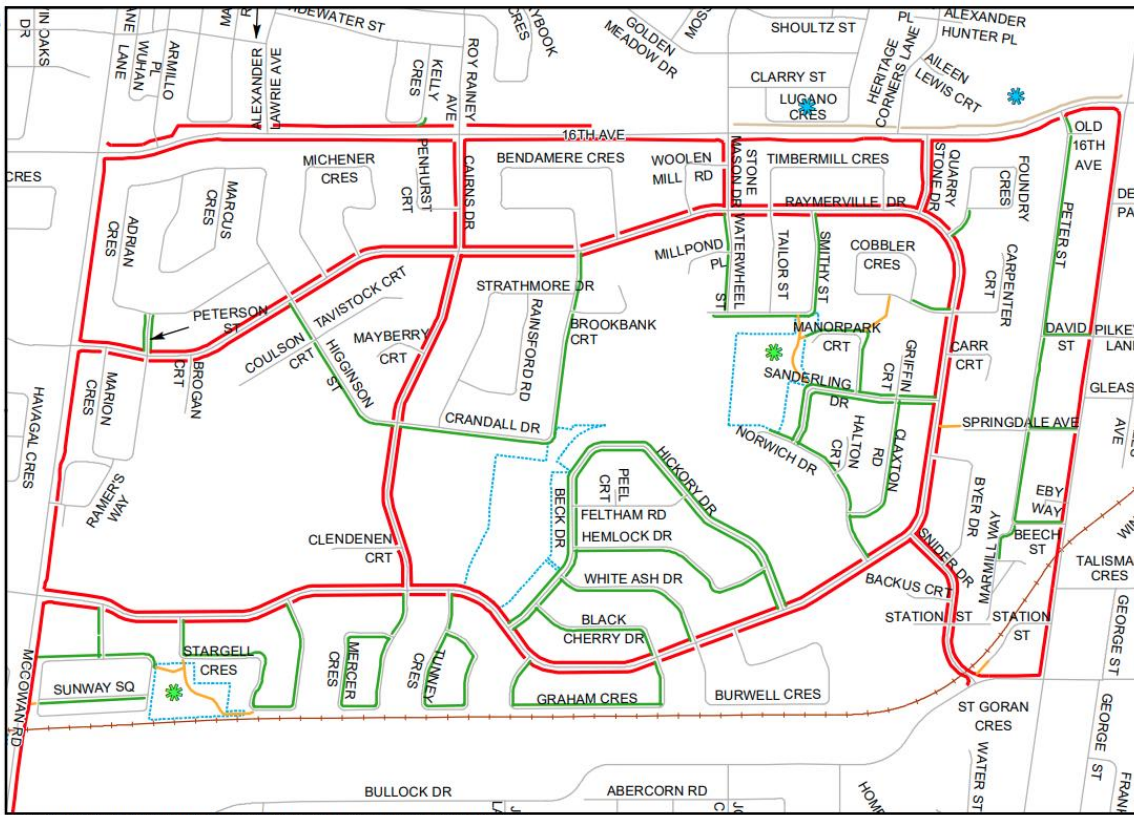
- Primary
- Secondary
- Walkway
- Other (do not plow)

Caution Point

- York Region to maintain north SW on 16th
- Plow trail through park
- Park / Greenspace



Plot Date: October 30, 2022



Path: G:\Operations Department\RoW\RoW\Winter Maps\2022-23\02_Sidewalks\Sidewalks 2022-23\Sidewalk Map Set 2022-23.mxd



Issues Related to City Maintenance of Regional Sidewalks

- * The Regional road Bare Pavement service level provides plowing cycles at 1.5-2.0 hr intervals often covering sidewalks previously cleared by City plows. City plow cycles with current resources are at 12-24 hr cycles.
- Blockages on regional sidewalks as a result of regional road plowing impede residents access, leading them to walk on regional roads
- On a straight kilometer cost maintaining 188km of regional sidewalks costs the City of Markham approximately \$595,000.00 yearly or 16% of the total annual budget for sidewalk maintenance. Due to the 35km of curb facing sidewalks we know that costs are much higher on Regional sidewalks and we are mining information through our AVL system to determine actual costs.
- Clearing regional sidewalks costs disproportionately more per kilometer due to the amount of blockages but is not tracked separately as they are part of the total route



Curb Facing Sidewalks- Limited or No Snow Storage Impacts





Curb Facing Sidewalks-Limited or No Snow Storage Impacts





Curb Facing Sidewalks- Limited or No Snow Storage Impacts





Recommendations

- THAT the Regional Municipality of York assume winter maintenance of sidewalks on Regional roads; and
- THAT the Regional Municipality of York assume winter maintenance of active transportation infrastructure including but not limited to separated cycle track or multi-use pathway on regional roads; and
- THAT the Regional Municipality of York prepare and outline the total cost and tax implication to the City of Markham to effect the assumption of winter maintenance of regional sidewalks and active transportation infrastructure; and
- THAT a Maintenance Agreement between the Regional Municipality of York and the City of Markham be executed to outline the change in responsibilities; and