



Lymantria Dispar Dispar (LDD)

Egg Mass Removal Update – April 4, 2022

David Plant – Sr. Manager Parks Horticulture and Forestry

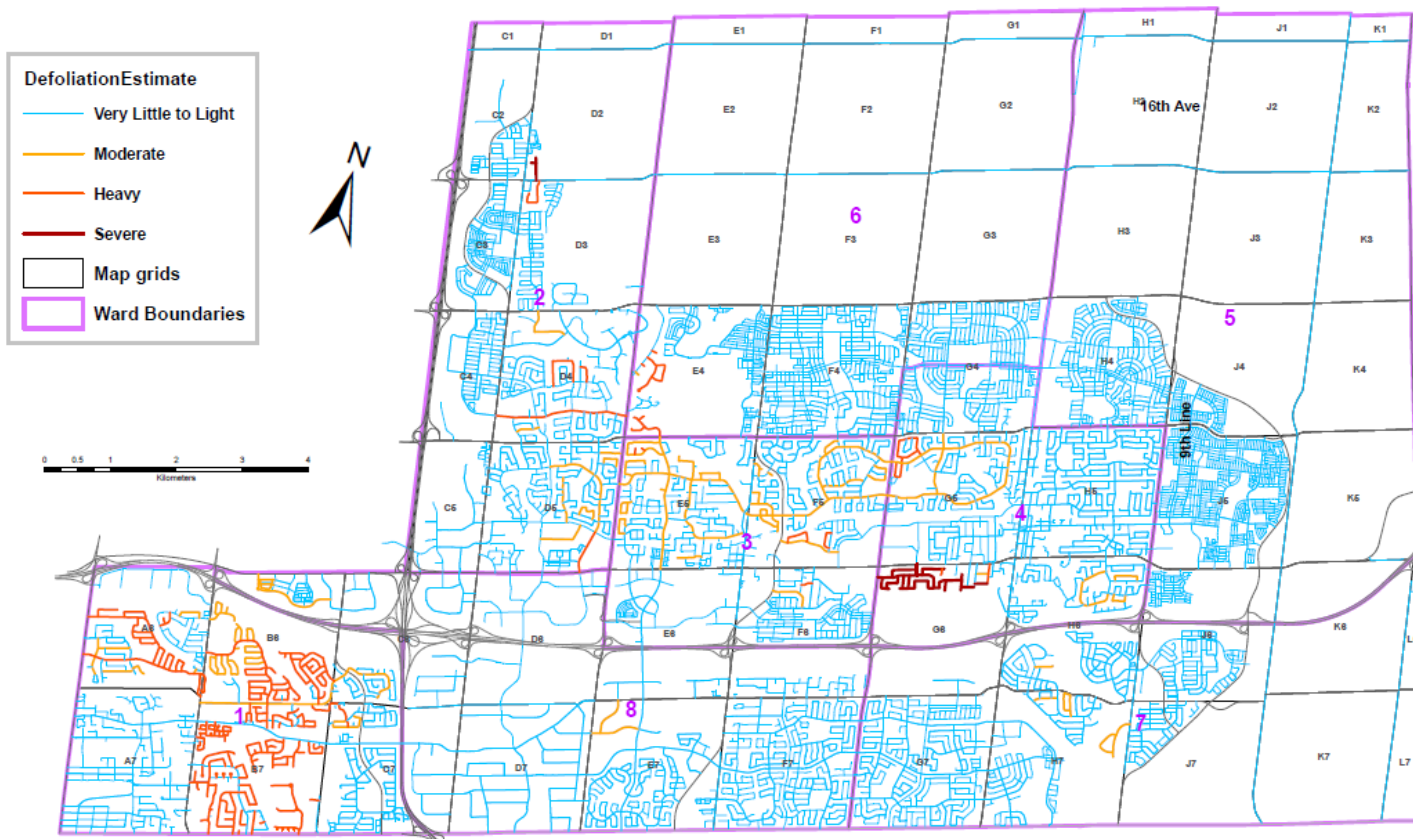


LDD Egg Mass Removal - City Street Trees by Ward

Ward	Estimated Defoliation of City Street Trees (based on Region of York survey results and City staff ground-based visual assessments prior to egg mass removal)	City Street Trees (inspected; egg masses removed up to approx. 15ft from ground level)
Ward 1	Heavy	All streets inspected and egg mass removals completed
Ward 2	Light - Moderate	All streets inspected and egg mass removals complete
Ward 3	Moderate	All streets inspected and egg mass removals completed
Ward 4	Heavy (Severe - Milne Dam Park area)	All streets inspected and egg mass removals completed
Ward 5	Light	All streets inspected and egg mass removals completed
Ward 6	Light	All streets inspected and egg mass removals completed
Ward 7	Light	All streets inspected and egg mass removals completed
Ward 8	Light	All streets inspected and egg mass removals completed



LDD Egg Mass Removal - City Street Trees



Scope of Work

- City staff inspected every City street tree and removed egg masses from 28,000
- Staff assigned a defoliation estimate on ground-based visual assessments prior to egg mass removal
- Staff removed egg masses within a 15ft reach, from the ground, using telescopic, battery-power vacuums
- The number of trees vacuumed were recorded for each street visited



LDD Egg Mass Removal – City Parks & Facilities

Having completed the inspection and egg mass removal of 28,000 City street trees, staff have now moved into parks and facilities estimated as having 'moderate' to 'severe' street tree defoliation. Egg mass removal sequence is prioritized. The location status is complete totaling an addition 670 trees with the exception of Milne Dam Park which is ongoing.

- Ward 1 – Simonston Park, Thornhill Cemetery, Cottonwood Park, Green Lane Park, Duncan Park, Huntington Park, Bayview Reservoir Park, Thornhill C.C., Heintzman House, Grandview Park
- Ward 2 – Markham Civic Centre, Coledale Park, Calvert Park, Victoria Square Park
- Ward 3 – Toogood Pond Park, Walden Pond Park, Carlton Park, Centennial Arena, Unionville Library, Central Park, Lincoln Park, Crosby Arena
- Ward 4 – Milne Dam public use area (on-going), Raybeck Park, Armstrong Park, Markham Village C.C. & Library
- Ward 5 – Mount Joy Park, Swan Lake Park
- Ward 6 – Berczy Park North & South
- Ward 7 – Legacy Park
- Ward 8 – Milliken Mills Park



2022 Continued Integrated Pest Management Plan

Complete eradication of the LDD Moth is not achievable as private trees and municipal boundaries limit our efforts. In addition to our egg mass removal program the City of Markham will continue to incorporate strategies in protecting our City green infrastructure.

- **Tree Azin Pesticide Injections** – single tree treatments for significant trees may be at risk as previously communicated
- **Aerial Lift Egg Mass Removal** – Park and facility trees located in areas currently recorded as ‘severe’, such as Milne Dam Conservation Area, will be prioritized and will be based on accessibility for equipment
- **Burlap Banding & Caterpillar Removal** – Installation and use of burlap banding at select sites (Milne Dam Park) with onsite staff will assist in the monitoring and removal efforts.
- 3,300 Burlap kits assembled and ready for distribution at the end of April.



BioForest injection capsules installed into a tree stem. Tree Azin will enter the vascular system, once capsules are empty, they are removed from the tree trunk.



Forestry truck, set up to perform aerial work such as egg mass removals. Giving access to hard to reach locations.



Burlap banding installed on a tree, with an active LDD caterpillar population. Caterpillars will be collected and disposed of in a safe manner.