

2021 DRAFT YORK REGION OFFICIAL PLAN

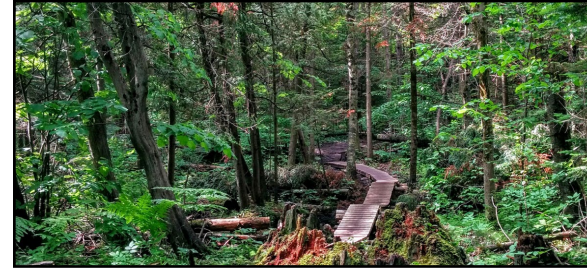
Markham Development Services Committee

February 15, 2022



OUTLINE

- What we heard via stakeholder and Public Engagement
- Major Policy Updates
 - Growth Management
 - Environment and Resources
 - Mapping/Appendices
- Next Steps



York Region is Required to Conform to Provincial Plans



Mandated Provincial Land Needs Assessment Methodology
is used to determine urban land needs

What We Have Heard

The Journey up to the Draft Regional Official Plan

- Ongoing Public Engagement
- Engagement with the Province
- Updates to Regional Council with Direction Received
- Local Municipal and Conservation Authority Input
- Proactive Indigenous Community Engagement
- Development Industry Collaboration



Residents

- Continued development of complete communities
- Ensure housing options
- Improve housing affordability
- How and where to accommodate growth

- Address climate change
- Minimize impact of growth on agricultural areas
- Environmental protection

- Concern over proposed new provincial highways

Government and Agency Partners

Indigenous Communities

- Land Acknowledgement
- Indigenous rights and perspectives
- Recognize and mitigate environmental threats
- Recognition of traditional Indigenous knowledge and way of life

Local Municipalities & Conservation Authorities

- Manage and phase growth
- Consider how policies will work at the local level
- Balance supportive policy direction with local flexibility
- Up to date natural heritage and water resource system information and mapping

Stakeholders

Individual Landowners

- Property specific concerns and interests

Development Industry

- Amount of land to accommodate future growth
- Growth management targets
- Accommodating market demand

Agricultural Community

- Impact of growth on agricultural areas (loss of agricultural land, food security)

The Draft 2021 York Region Official Plan

Draft Regional Official Plan Outline



Chapter 1: Introduction and Purpose of the Official Plan

Chapter 2: The Foundation for Complete Communities

Chapter 3: A Sustainable Natural Environment

Chapter 4: An Urbanizing Region

Chapter 5: Supporting the Agricultural System

Chapter 6: Servicing our Communities

Chapter 7: Implementation of the Official Plan

Maps: 1- 12 and Figure 1

Appendices

Key Guiding Principles of the Draft Regional Official Plan

Sustainable Growth
Management

Complete
Communities

Intensification in
Appropriate Areas

Protection of
Employment Lands

People and Transit
First Approach

Climate Change
Adaptation,
Mitigation and
Resilience

Affordable Housing
Options

Protection of
Agricultural System

Protection
of Regional
Greenlands System
and Water Resource
System

Full-Cost Accounting
Approach



Key Policy Theme Areas

GROWTH MANAGEMENT



STRATEGIC GROWTH AREAS



MAJOR TRANSIT STATION AREAS



COMMUNITY AREAS



HOUSING



EMPLOYMENT AREAS



ENVIRONMENT and RESOURCES



AGRICULTURAL SYSTEM



NATURAL SYSTEMS



CLIMATE CHANGE

Growth Management

Population and Employment Forecast to 2051

- Markham:

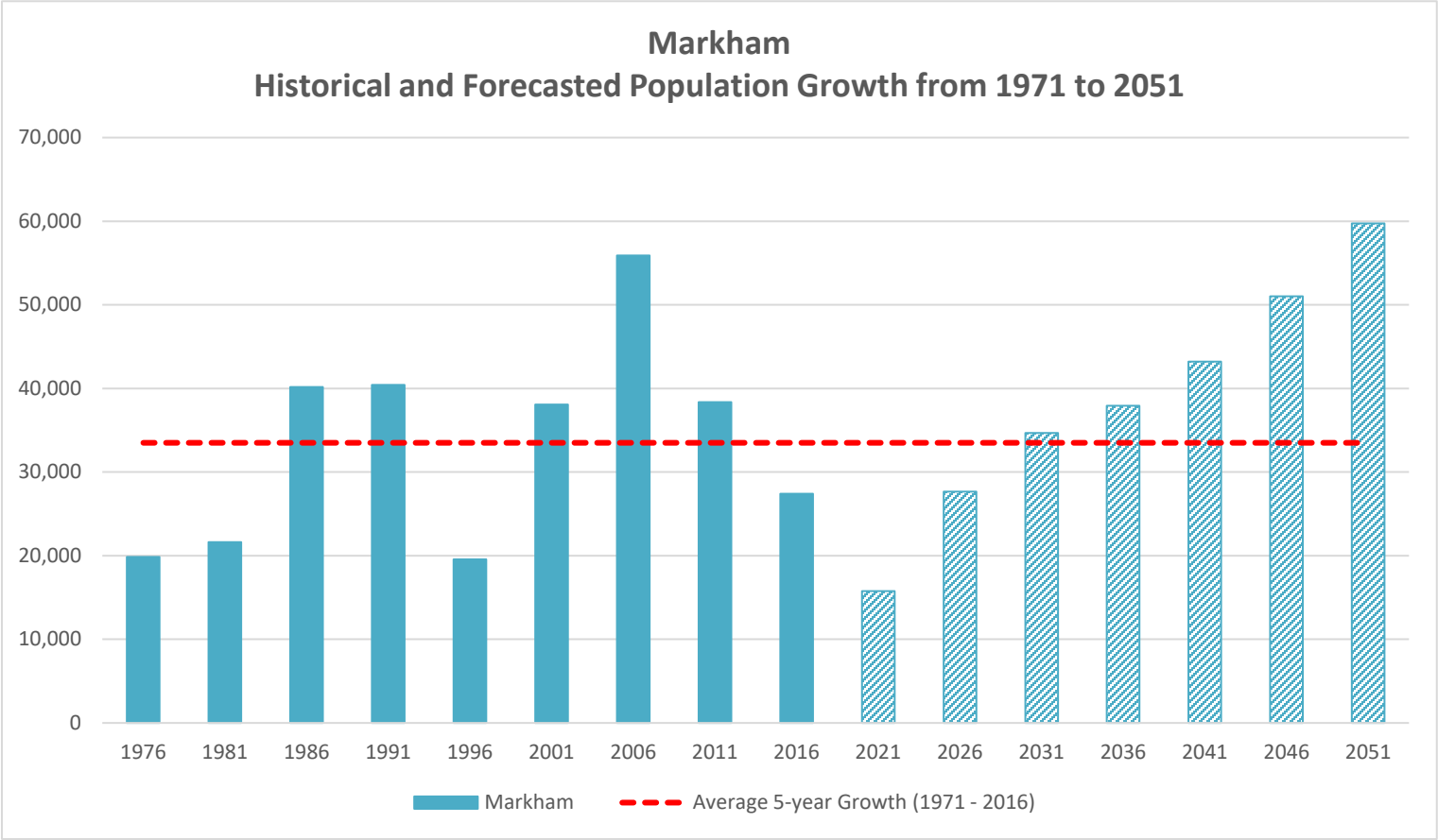
	2021	2051
Population	351,800	608,500
Employment	193,200	301,700

- York Region:

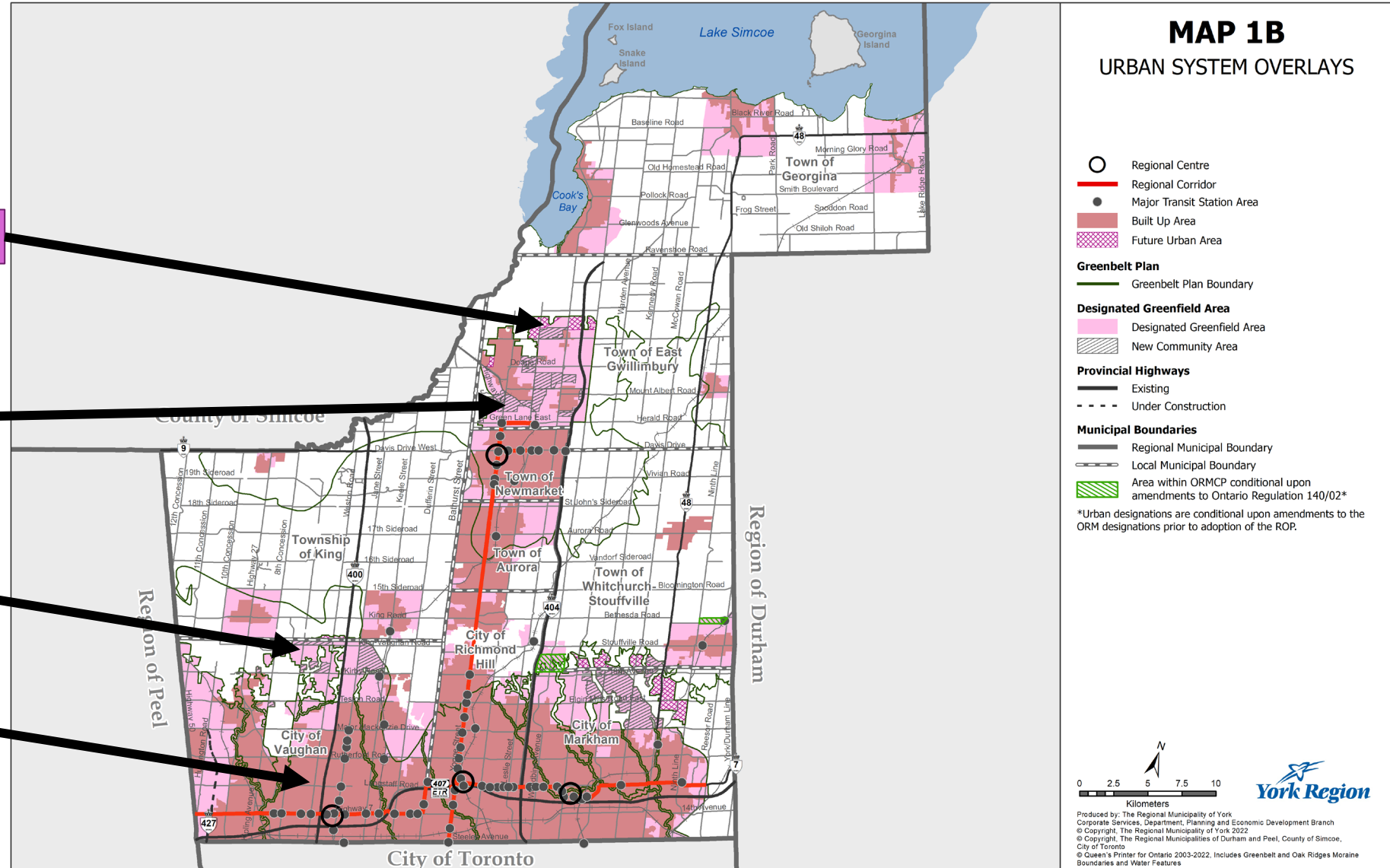
	2021	2051
Population	1,226,600	2,034,900
Employment	644,700	991,400

Year	Markham Population Growth
1976	19,859
1981	21,612
1986	40,180
1991	40,436
1996	19,566
2001	38,082
2006	55,898
2011	38,381
2016	27,410
2021	15,750
2026	27,653
2031	34,689
2036	37,913
2041	43,219
2046	51,010
2051	59,725

Forecasted Population Growth



The Urban System



Future Urban Areas

New Community Areas

Designated Greenfield Area

Built-up Area

Strategic Growth Areas

REGIONAL INTENSIFICATION HIERARCHY

REGIONAL CENTRES

MAJOR TRANSIT STATION AREAS - SUBWAY STATION

MAJOR TRANSIT STATION AREAS - OTHER

REGIONAL CORRIDORS
OUTSIDE of MAJOR TRANSIT STATION AREAS

LOCAL CENTRES and CORRIDORS



Major Transit Station Areas

- Direct growth to areas surrounding 78 higher order transit station or stops
- Focus of higher densities and intensification
- New Growth Plan requirement for the Region



Community Areas

- Complete communities with opportunities to live, work, play and learn
- Modern, compact, inclusive and diverse
- Pedestrian oriented
- Housing choice
- Local services and amenities
- Where land uses are mixed
- Supported by transit



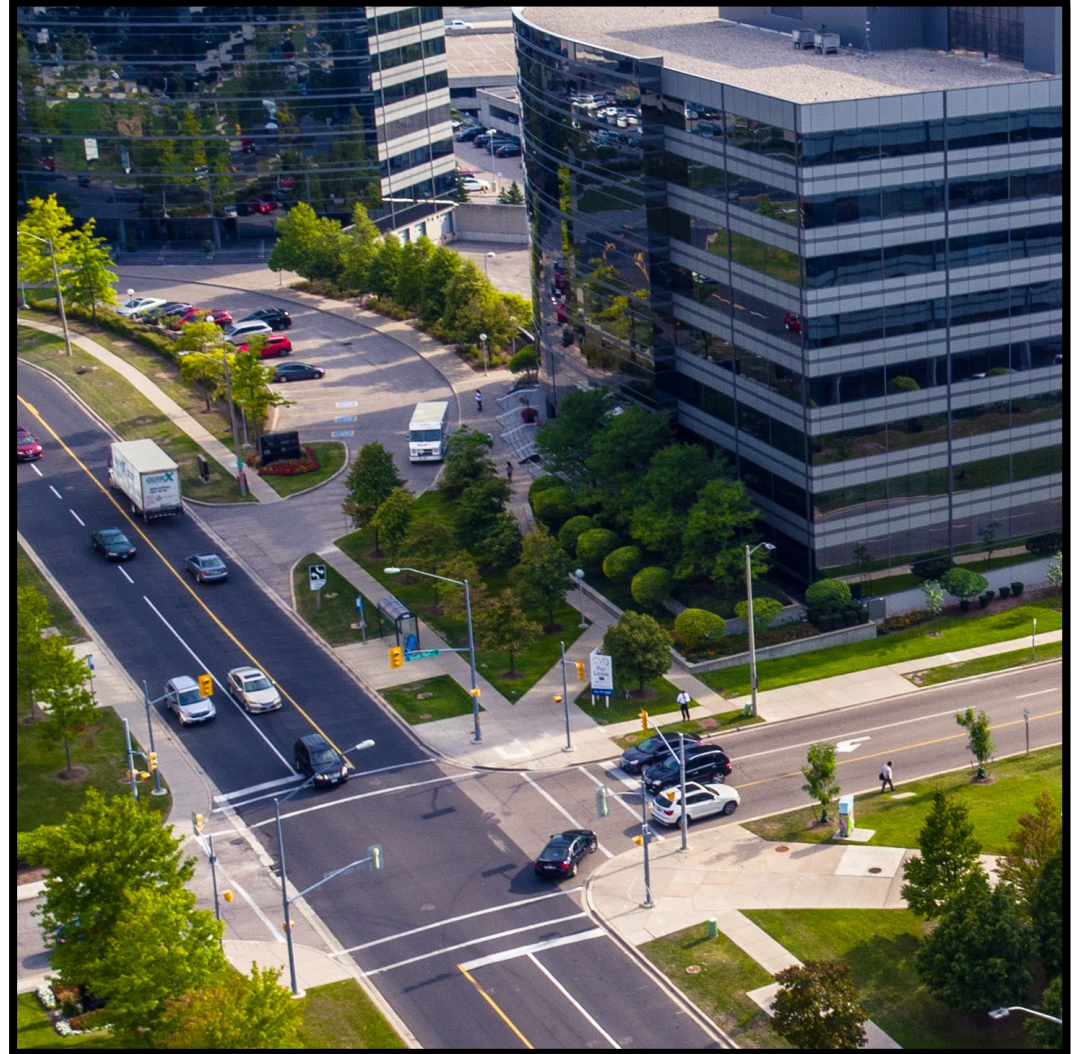
Housing

- Strengthened policies for a range and mix of housing options
- Ensure adequate supply
- Affordable housing targets
- Rental housing target of 1,000 units per year
- Commitment to pursue ways to increase affordable housing options



Employment Areas

- Focus of economic development
- Ensure long term protection through designation
- Includes proposed density targets for clusters of employment areas
- A range of high-quality jobs close to where people live



Providing Critical Infrastructure and Services

- Continued investment in Rapid Transit and Subways
- Align growth with the delivery of essential infrastructure
- Accessible and responsive human services



Environment and Resources

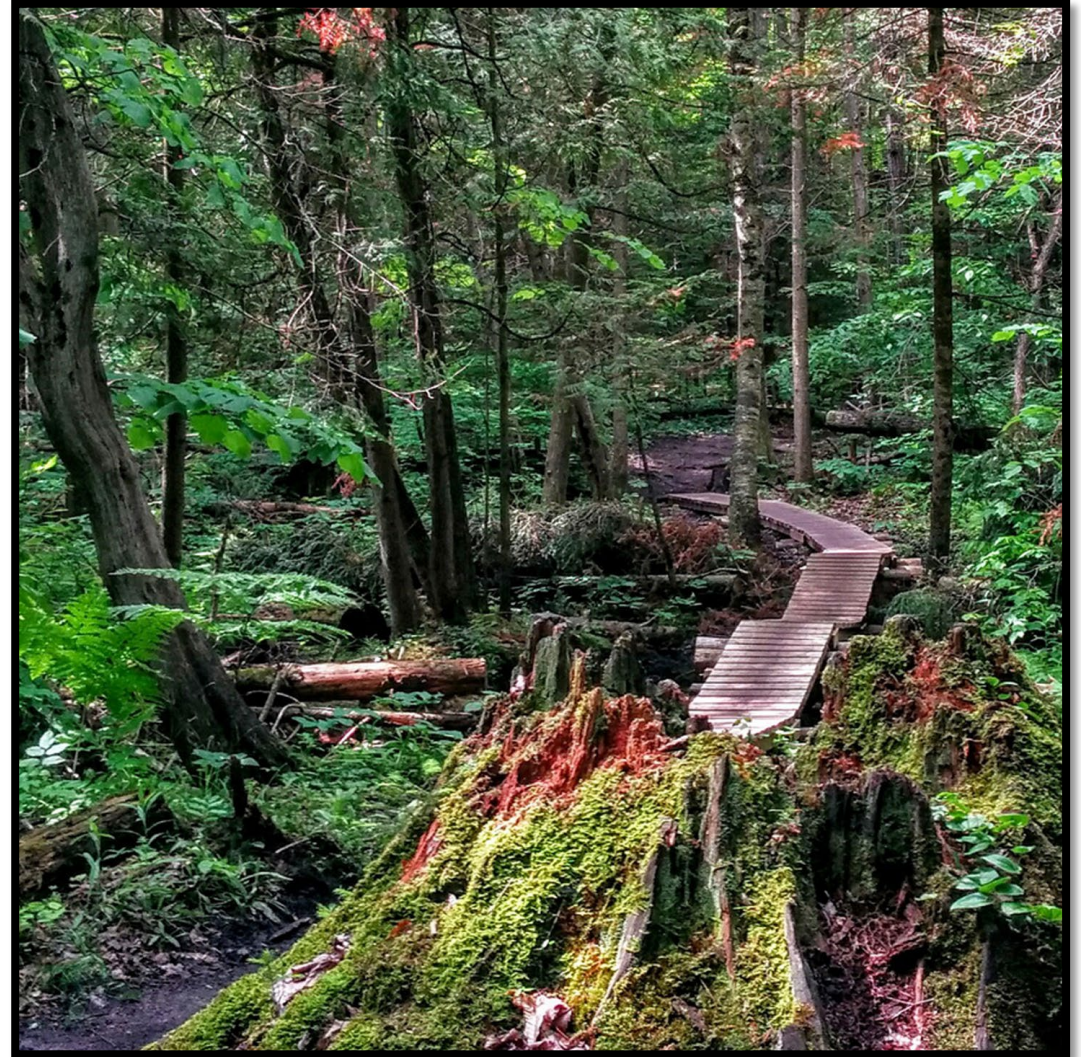
Agricultural System

- Implement an agricultural systems approach
- Support agriculture and on-farm diversified uses
- Manage the introduction of new non-agricultural uses
- Strengthened agri-food network policies



Natural Systems

- Continue to identify and protect the Regional Greenlands System
- Introduced new tree canopy cover target
- Updated Water Resource System policies to identify, protect, improve or restore vulnerable and sensitive surface and ground water
- Up to date mapping and information



Climate Change

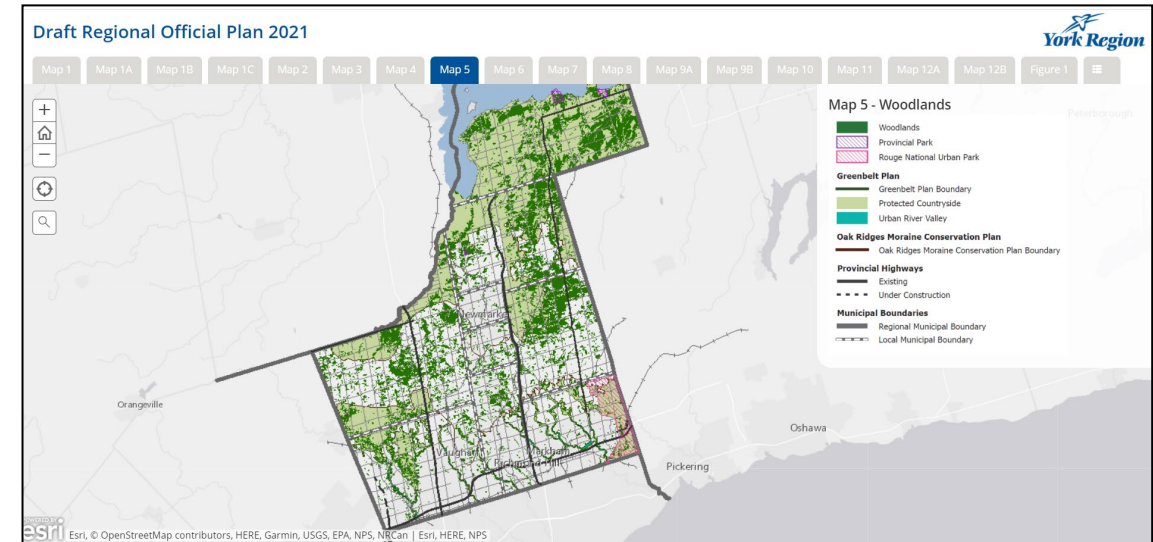
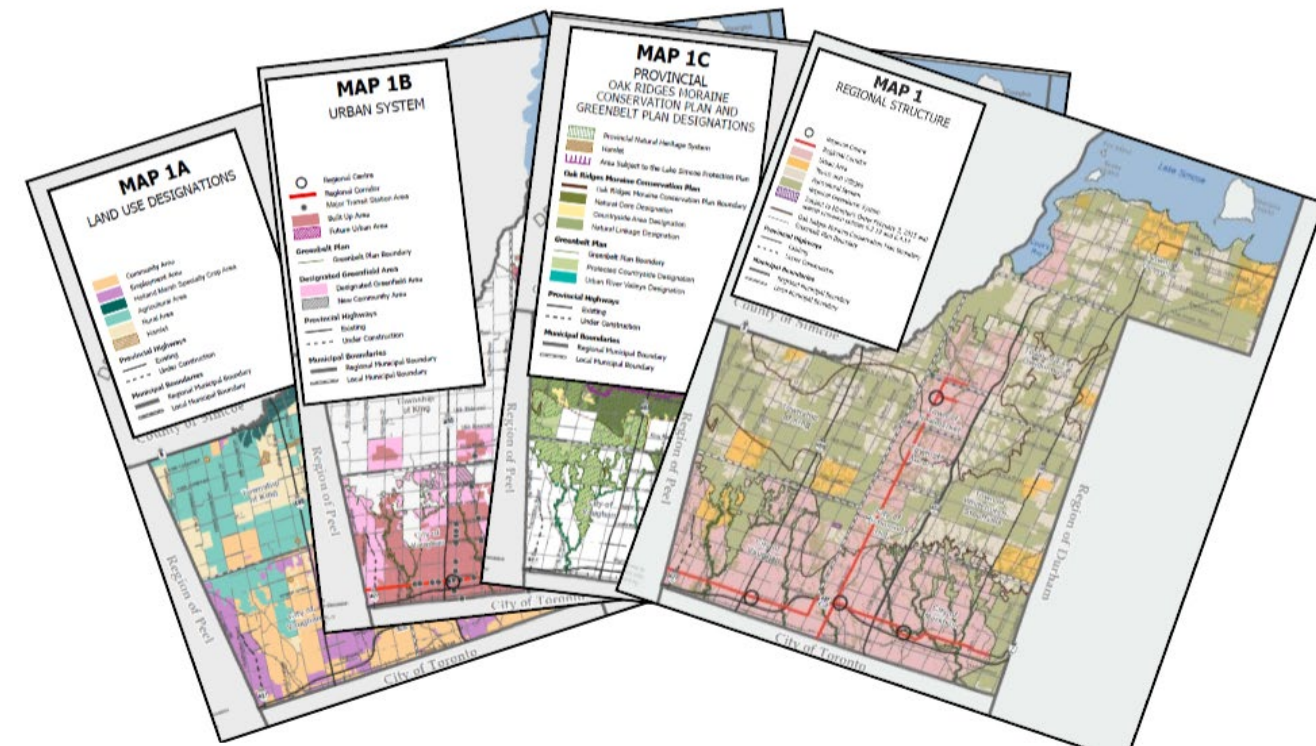
- Reduce greenhouse gas emissions
- Reduce vulnerability and increase resilience
- Align with Climate Change Action Plan and Community Energy and Emissions Plan
- Continue to work with partners to achieve climate change goals



Photo courtesy of Sjoerd Witteveen/Torstar

Maps and Appendices

Draft Region Official Plan Maps

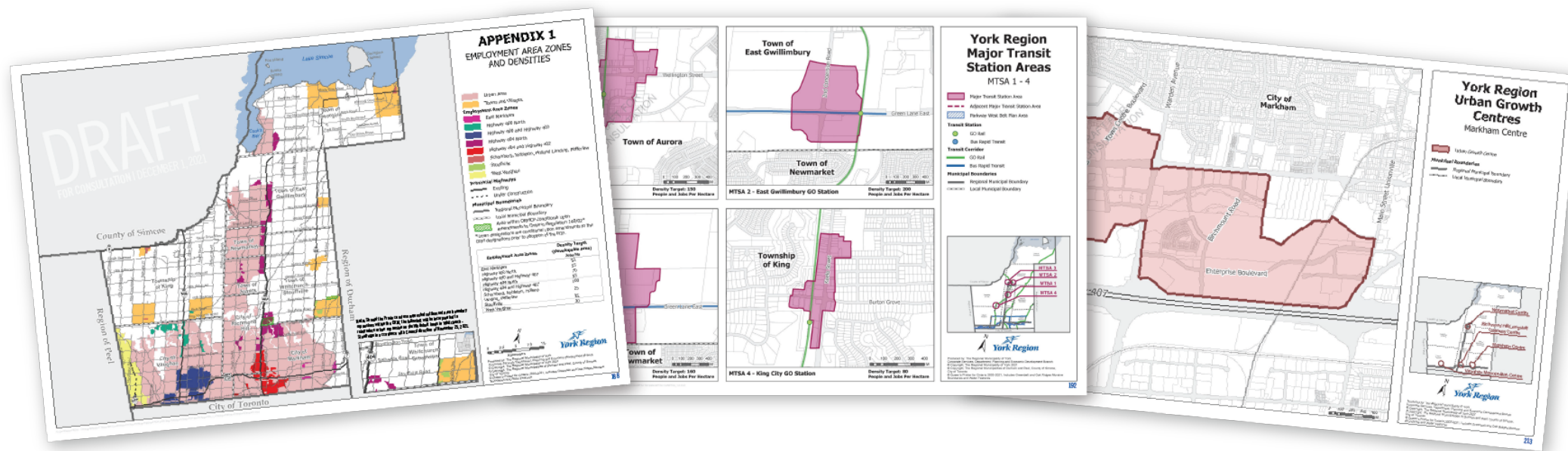


Link to Interactive Web Maps:

<https://york.maps.arcgis.com/apps/MapSeries/index.html?appid=a11a6189d269461e8aad731b5eb8d9c0>

Draft Region Official Plan Appendices

- Employment area zones and densities
- Detailed MTSA mapping and densities
- Delineated Provincial Urban Growth Centres



What's Next?

Next Steps



Questions and Comments