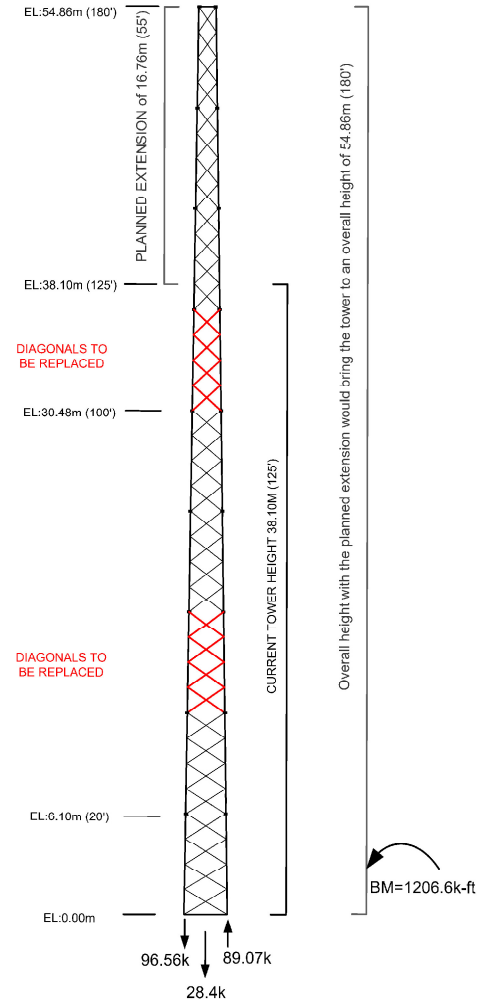


TOWER AND ACCESSORIES DESIGNED
TO CAN/CSA-S37-13 FOR:
WIND - 450 Pa 1/50 yr AND
ICE=25mm

| | | | |
|----------------------------|--------------------|----------------------------|--------------|
| 60mm O.D. x 4.78mm HSS | 38 x 38 x 3mm L | 1219 x 1524mm | FA5-4 |
| 60mm O.D. x 6.35mm HSS | 38 x 38 x 3mm L | 1524 x 1829mm | FA6-5 |
| 73mm O.D. x 6.35mm HSS | 44 x 44 x 3mm L | 1829 x 2134mm | FA7-6 |
| 89mm O.D. x 6.35mm HSS | 44 x 44 x 5mm L | 2134 x 2438mm | FA8-7 |
| 89mm O.D. x 6.35mm HSS | 51 x 51 x 3mm L | 2438 x 2743mm | FA9-8 |
| 102mm O.D. x 6.35mm HSS | 51 x 51 x 5mm L | 2743 x 3048mm | FA10-9 |
| 114mm O.D. x 6.35mm HSS | 51 x 51 x 6mm L | 3048 x 3353mm | FA11-10 |
| 114mm O.D. x 7.95mm HSS | 64 x 64 x 5mm L | 3353 x 3658mm | FA12-11 |
| 141mm O.D. x 6.55mm HSS | 64 x 64 x 6mm L | 3658 x 3962mm | FA13-12 |
| LEG SIZE | BRACING SIZE | TOWER (TOP) WIDTH (BOT) | SECT. NO. |



ELEVATION

APPLICANT: Alectra Utilities (Philip Haid)
7932 Kennedy Road

FILE No. SPC 20 126772

Q:\Geomatics\New Operation\2020 Agenda\SPC\SPC20_126772\Report Figures.mxd