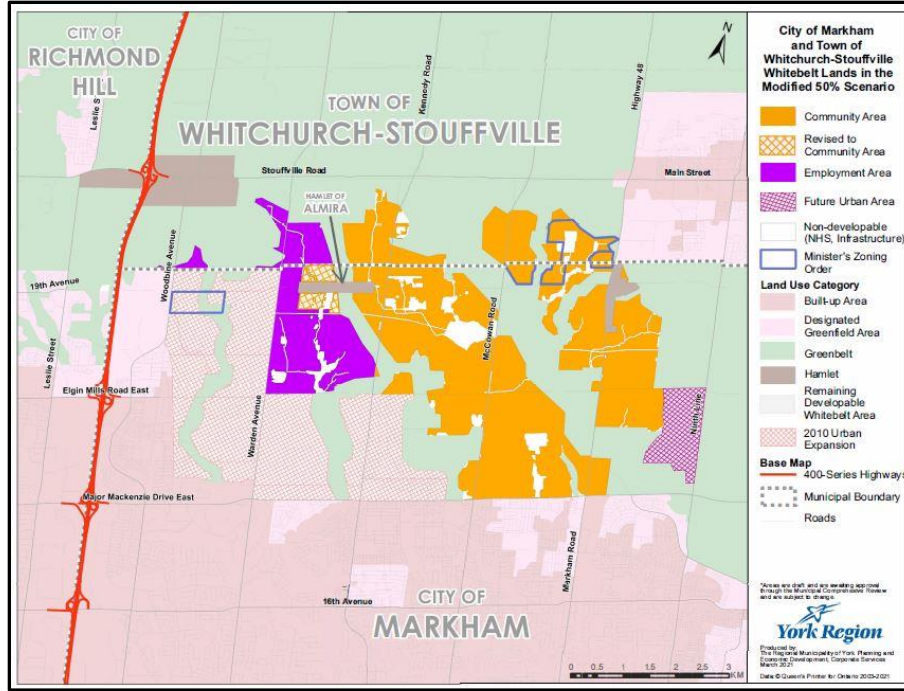


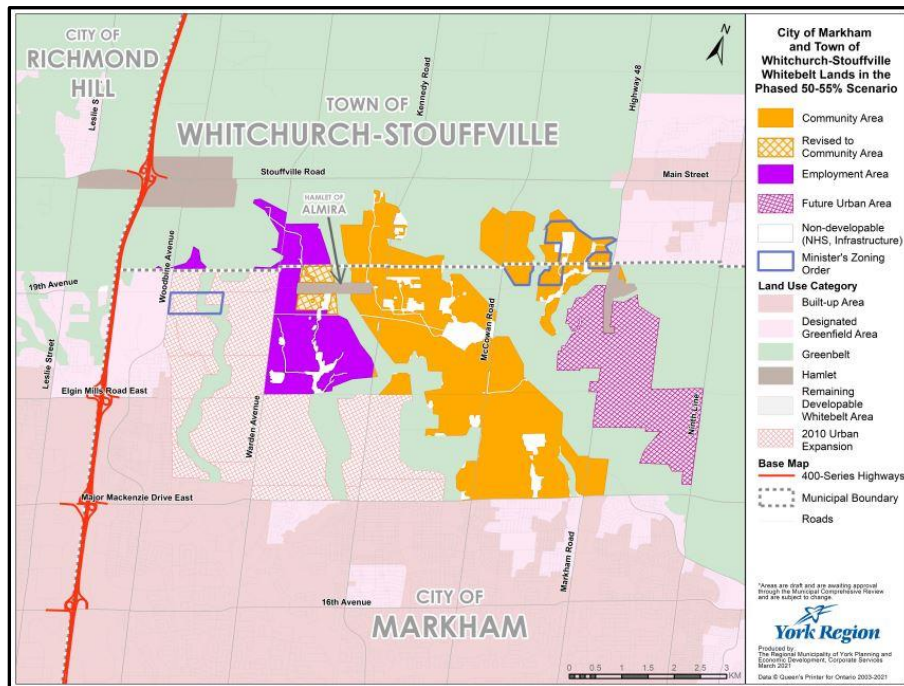
ATTACHMENT 1

York Region's Proposed New Community Lands in Markham under the Modified 50% and Phased 50-55% Scenarios

Modified 50% Scenario



Phased 50-55% Scenario



Source: York Region Staff Report, "Alternate 2051 Forecast and Land Needs Assessment Scenarios in Response to Consultation", September 16, 2021