



# City of Markham Active Transportation Master Plan

Development Services Committee Meeting  
June 21, 2021





## What is an Active Transportation Master Plan (ATMP)?

- ▶ Long-term strategic plan
- ▶ Identifies recommendations to improve walking, wheeling and cycling
  - ▶ Infrastructure recommendations
  - ▶ Supporting policies and programs
- ▶ Prioritization and phasing framework
- ▶ Short-term implementation plan



## STUDY VISION

---

**“People walking and cycling in the City of Markham feel safe, encouraged and have a sense of community. Networks are comfortable, accessible, safe, convenient and connected, and provide access to key destinations and transit. Through an on-going culture shift and investment, active transportation is a healthy and effective mode of transportation and a competitive alternative to driving for short trips.”**



## Investing in Active Transportation

Active transportation has many community benefits:

- ▶ Healthier & happier communities
- ▶ Improve environmental outcomes and
- ▶ Promote efficiency for the transportation system
- ▶ Economic benefits (e.g. contributing to local business areas)

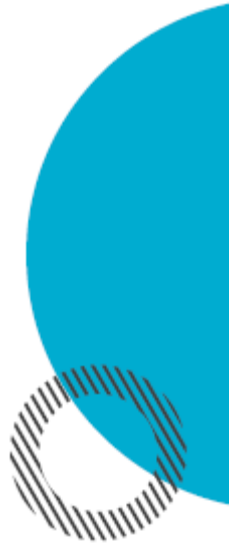




## Investing in Active Transportation

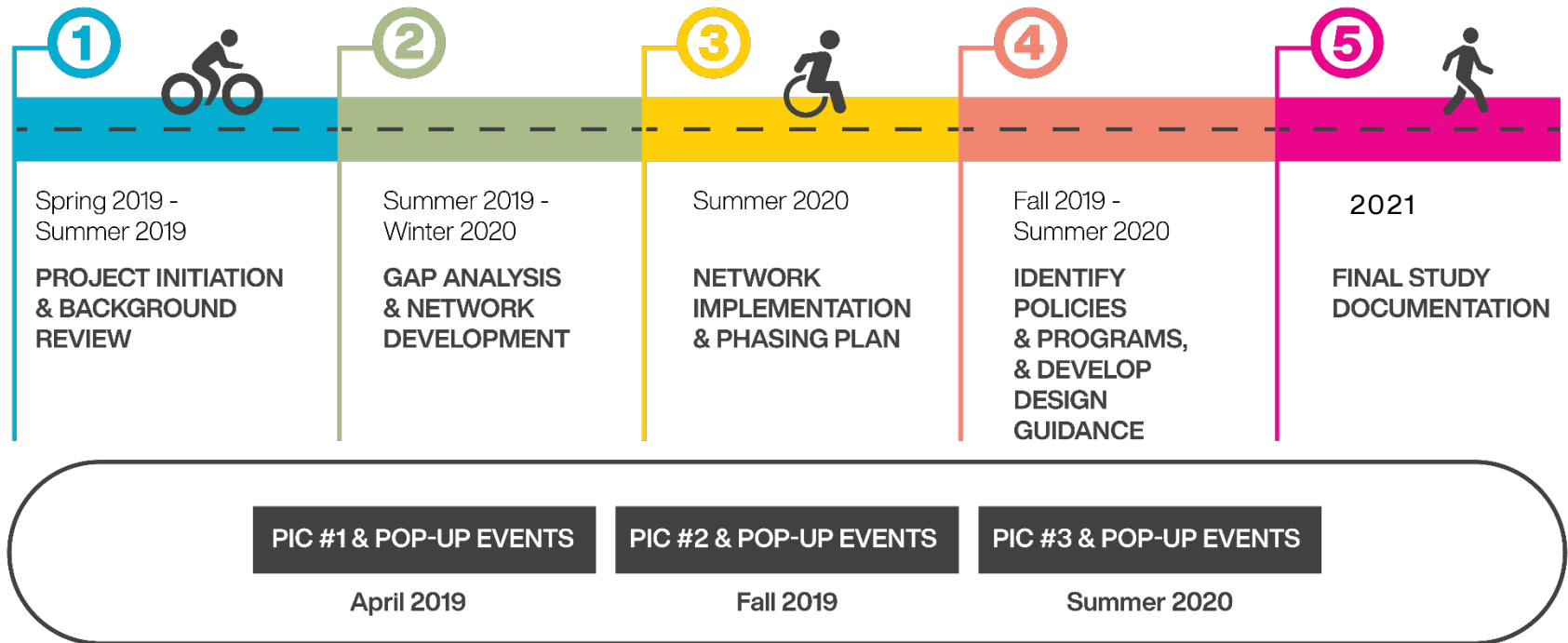
### Reinforcing the urgency:

- ▶ COVID-19 pandemic has generated increased demand for alternative transportation options
- ▶ Increasing safety for active transportation identified as a critical priority through road safety audit
- ▶ Supporting sustainable transportation options will help meet Markham's emission reduction targets
- ▶ Supporting growth as transportation options for short trips, particularly in Centres & Corridors
- ▶ Creating framework for micro-mobility use





# Study Process





# Policy Context

<b>PROVINCIAL</b>	<ul style="list-style-type: none"><li>• Provincial Policy Statement (2020)</li><li>• <b>Places to Grow: Growth Plan for the Greater Golden Horseshoe (2017)</b></li><li>• #CycleON – Ontario's Cycling Strategy (2013), Action Plan 1.0 (2014), &amp; Action Plan 2.0 (2018)</li><li>• Metrolinx 2041 Regional Transportation Plan (2016)</li><li>• Metrolinx GO Rail Station Access Plan (2016)</li></ul>
<b>YORK REGION</b>	<ul style="list-style-type: none"><li>• <b>York Region Vision 2051: strong, caring, safe communities</b></li><li>• York Region Official Plan (2016)</li><li>• York Region Transportation Master Plan (2016)</li></ul>
<b>CITY OF MARKHAM</b>	<ul style="list-style-type: none"><li>• City of Markham Official Plan (2014)</li><li>• <b>Building Markham's Future Together: Strategic Plan (2020-2023)</b></li><li>• Greenprint Community Sustainability Plan (2011)</li><li>• Markham Municipal Energy Plan (2017)</li><li>• Integrated Leisure Master Plan (2019)</li></ul>



# Policy Context:

## Building Markham's Future Together

### 2020-2023 Strategic Actions:

- **3.1.5 Implement Active Transportation Master Plan and first and last mile solutions (biking, walking, transit)**
- **3.1.6 Expand road safety program**

### Additional Relevant Elements:

- Support major growth areas including transit station areas
- Support the Municipal Energy Plan
- Support the Integrated Leisure Master Plan
- Support the Markham Centre Rouge River trail system





# Key Study Themes



**Pursue Pedestrian  
Network Improvements**



**Connect & Enhance the  
Cycling Network**



**Encourage & Engage our  
Community**



**Evolve Design &  
Maintenance for Active  
Transportation Facilities**



# Theme 1: Pursue Pedestrian Network Improvements



- ▶ Infrastructure should be accessible, safe, and comfortable for pedestrians
- ▶ The ATMP:
  - ▶ Helps address barriers & gaps in the existing network
  - ▶ Recommends strategies to enhance pedestrian safety and connectivity
  - ▶ Promotes walking as an attractive transportation option



# Theme 1: Pursue Pedestrian Network Improvements

## Sample Action Items:

- ▶ Fill sidewalk gaps along major roads
- ▶ Implement AODA upgrades at intersections
- ▶ Implement targeted improvements in Pedestrian Priority Areas
- ▶ Implement pedestrian safety measures at intersections
- ▶ Pilot year-round maintenance of pathways near schools





## Theme 2: Connect & Enhance the Cycling Network



### Overview:

- ▶ Continue to pursue network improvements and expansion to make cycling a safer and more attractive option for transportation
- ▶ The ATMP:
  - ▶ Identifies a long-term network plan
  - ▶ Includes short-term network improvements
  - ▶ Identifies strategies to support the network



## Theme 2: Connect & Enhance the Cycling Network

### Sample Action Items:

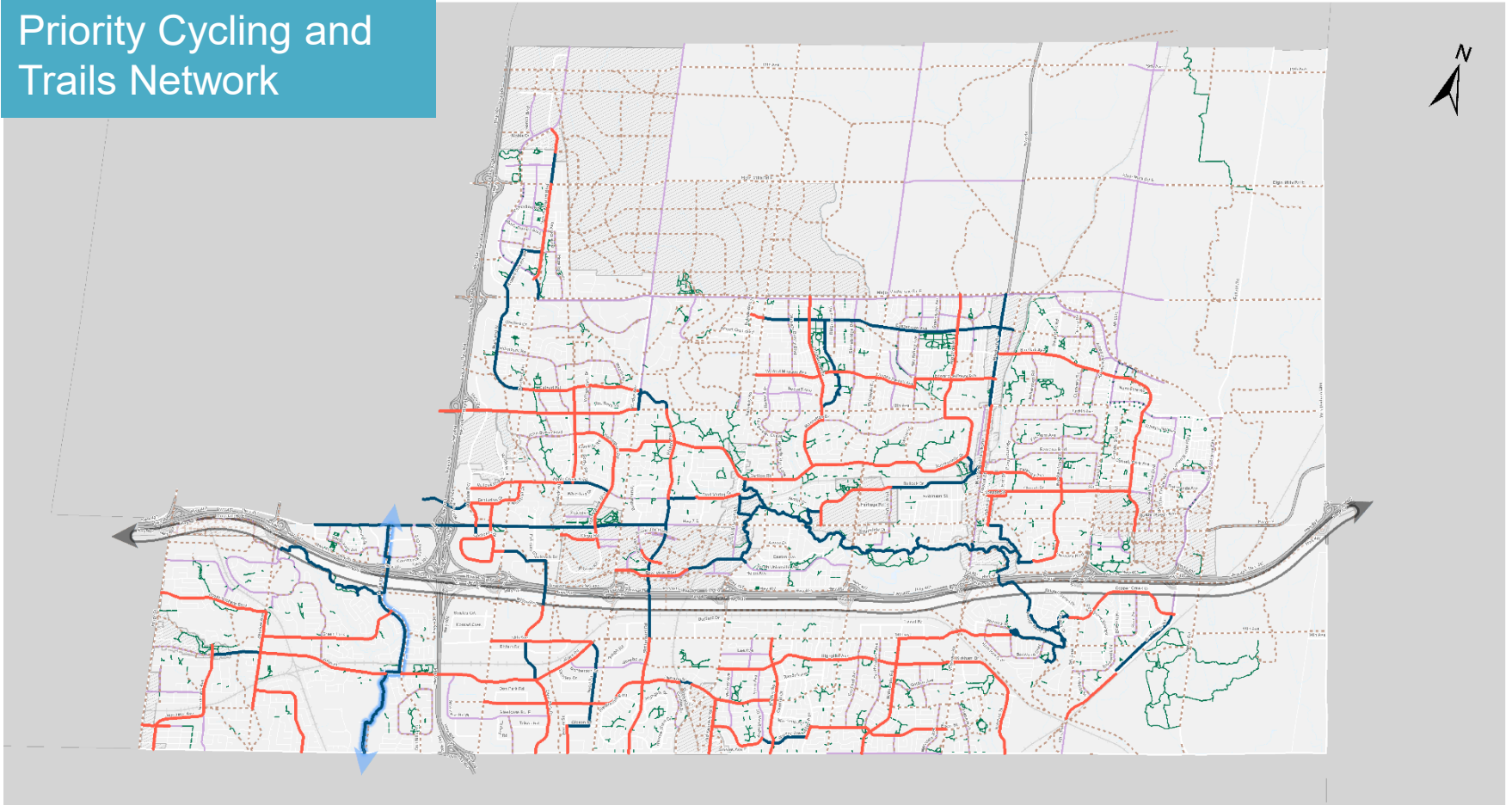
- ▶ Upgrades to existing cycling facilities (along corridors and at intersections)
- ▶ Pursue a short-term priority cycling & trails network
- ▶ Advance ultimate cycling network through new development and construction projects





# Theme 2: Connect & Enhance the Cycling Network

## Priority Cycling and Trails Network





## Theme 3: Encourage & Engage our Community



### Overview:

- ▶ Growing a culture of walking and cycling is important to build momentum
- ▶ The ATMP:
  - ▶ provides recommendations for engaging with and encouraging community members to use active transportation in Markham



## Theme 3: Encourage & Engage our Community

### Sample Action Items:

- ▶ Formalize Active School Travel program
- ▶ Establish pedestrian and cycling safety awareness program
- ▶ Expand the role of Markham Cycles
- ▶ Expand Markham Cycling Day to explore an open streets program
- ▶ Explore shared micro-mobility program
- ▶ Develop a cycling data collection program to support a “State of Cycling Report” program







## Theme 4: Evolve Design & Maintenance



Source: Google Maps, 2019

### Overview:

- ▶ Safety for people of all ages & abilities
- ▶ Maintenance & operations
- ▶ The ATMP:
  - ▶ Provides recommendations for improving design and maintenance



## Theme 4: Evolve Design & Maintenance

### Sample Action Items:

- ▶ Adopt updated cycling facility guidance for new developments
- ▶ Incorporate best practices for separated cycling facilities
- ▶ Incorporate traffic calming & safety-related improvements as part of standard practice
- ▶ Pilot winter cycling maintenance project





## Implementation & Monitoring

- ▶ Short-Term Implementation Plan
  - ▶ Projects to be implemented within five-years
- ▶ Implementation progress to be tracked using:
  - ▶ Network-based indicators
  - ▶ Travel demand survey data
- ▶ ATMP to be reviewed/updated every 5 years





## Network Improvements

	Existing (km)	Short-Term (km)	Long-Term (km)	Ultimate (km)
Shared Roadways	66.1	45	6.8	117.9
Multi-use Paths	31.1	20.5	58.8	110.4
Bike lanes & Buffered Bike Lanes	49.4	93.7	5.7	148.8
Cycle Tracks & Protected Bike Lanes	2.4	24.3	120.3	147.0
Off-road Trails	16.8	31.5	135.9	184.2
<b>TOTAL</b>	<b>165.8</b>	<b>215</b>	<b>327.5</b>	<b>708.3</b>



## ATMP Implementation Costs

THEME	PROGRAMMING COST (ANNUAL)	SHORT-TERM PLAN CAPITAL COST	ULTIMATE PLAN CAPITAL COST
Pursue Pedestrian Network Improvements	\$ 35,000	\$ 13 M	\$ 28 M
Connect & Enhance the Cycling Network	\$10,000	\$ 50 M	\$ 287 M
Encourage & Engage Our Community	\$ 307,000	-	-
Evolve Design & Maintenance for AT Facilities	\$ 50,000	-	-
<b>TOTAL</b>	<b>\$ 402,000</b>	<b>\$ 63 M</b>	<b>\$ 315 M</b>



## ATMP Capital Funding Sources

- ▶ DC Bylaw considerations:
  - ▶ Sidewalk program (already in DC Bylaw)
  - ▶ Short-term cycling & trails network (\$50M – to add)
  - ▶ ATMP to be reviewed routinely prior to DC Bylaw update
  
- ▶ Federal, Provincial and York Region funding programs:
  - ▶ \$400M 5-year National AT Strategy
  - ▶ Various Provincial programs (OMCC, AST, etc)
  - ▶ York Region Municipal Partnership Program



## Closing Statement

The ATMP builds upon the existing active transportation network, previous master plans and extensive policy support at the City level and beyond.

The ATMP is both an important policy and technical document that defines the active transportation network and policies to support a vibrant and healthy community, reflect changing travel characteristics and consider emerging technologies over the next 20+ years.

Endorsing the ATMP will support the City of Markham in the planning, funding, delivery and implementation of active transportation infrastructure and services.





# Thank you!

# Questions?

**Zibby Petch, P.Eng.**

Consultant Project Manager

IBI Group

905.546.1010 X 63123

[zibby.petch@ibigroup.com](mailto:zibby.petch@ibigroup.com)

**Fion Ho, MES**

City of Markham Project Manager

TDM Coordinator

905.477.7000 X 2160

[FHo@markham.ca](mailto:FHo@markham.ca)