
From: McPhail, Roxanne <Roxanne.McPhail@york.ca> **On Behalf Of** Regional Clerk
Sent: Tuesday, June 29, 2021 10:45 AM
Subject: Regional Council Decision - Regional Official Plan Update Policy Directions Report

CAUTION: This email originated from a source outside the City of Markham. DO NOT CLICK on any links or attachments, or reply unless you recognize the sender and know the content is safe.

On June 24, 2021 Regional Council made the following decision:

1. Council receive the preliminary policy directions summarized in this report and further described in Attachment 1 to support development of draft policies that will be presented to Council as part of the draft Regional Official Plan regarding:
 - a) Proposed Mapping
 - b) Phasing of Urban Expansion
 - c) Housing
2. Council receive the draft Regional Structure Maps illustrated in Attachment 2 for continued consultation as part of the Regional Official Plan Update.
3. The Regional Clerk forward this report and Attachments to the Clerks of the local municipalities, and the Ministry of Municipal Affairs and Housing.
4. That the consultation process continue and that any elements of this report relating to East Gwillimbury's growth be deferred until completion of the ongoing consultation process to ensure the inclusion of the Town's remaining Whitebelt lands as Urban Settlement Area through this MCR process, as endorsed by the Town of East Gwillimbury Council.

The original staff report is attached for your information.

Please contact Sandra Malcic, Director, Long Range Planning at 1-877-464-9675 ext. 75724 if you have any questions with respect to this matter.

Regards,

Christopher Raynor | Regional Clerk, Office of the Regional Clerk, Corporate Services

The Regional Municipality of York | 17250 Yonge Street | Newmarket, ON L3Y 6Z1
1-877-464-9675 ext. 71300 | christopher.raynor@york.ca | york.ca

Our Mission: **Working together to serve our thriving communities – today and tomorrow**

The Regional Municipality of York

Committee of the Whole
Planning and Economic Development
June 10, 2021

Report of the Commissioner of Corporate Services and Chief Planner

Regional Official Plan Update Policy Directions Report

1. Recommendations

1. Council receive the preliminary policy directions summarized in this report and further described in Attachment 1 to support development of draft policies that will be presented to Council as part of the draft Regional Official Plan regarding:
 - a) Proposed Mapping
 - b) Phasing of Urban Expansion
 - c) Housing
2. Council receive the draft Regional Structure Maps illustrated in Attachment 2 for continued consultation as part of the Regional Official Plan Update.
3. The Regional Clerk forward this report and Attachments to the Clerks of the local municipalities, and the Ministry of Municipal Affairs and Housing.

2. Summary

This report focuses on a summary of preliminary policy directions for several Regional Official Plan (ROP) policy areas, mapping updates and an update on continued engagement for the Municipal Comprehensive Review (MCR).

Key Points:

- This report provides recommended direction on the following ROP policy areas:
 1. Proposed Mapping
 2. Phasing of Urban Expansion
 3. Housing

- Stronger phasing policies for growth over the 30-year planning horizon in the Regional Official Plan necessary for supporting financial sustainability and the logical sequencing of growth
- A Region-wide purpose-built rental housing target of 1,000 units per year distributed between local municipalities proportionate to projected local municipal population
- Online engagement has been effective during the COVID-19 pandemic and will continue in line with Public Health measures
- Indigenous engagement for the MCR is being coordinated with Infrastructure Masterplan updates
- Following ongoing stakeholder and public consultation on the policy directions presented in this report, a draft Regional Official Plan containing updated policies is targeted to be presented to Council in Q4 2021

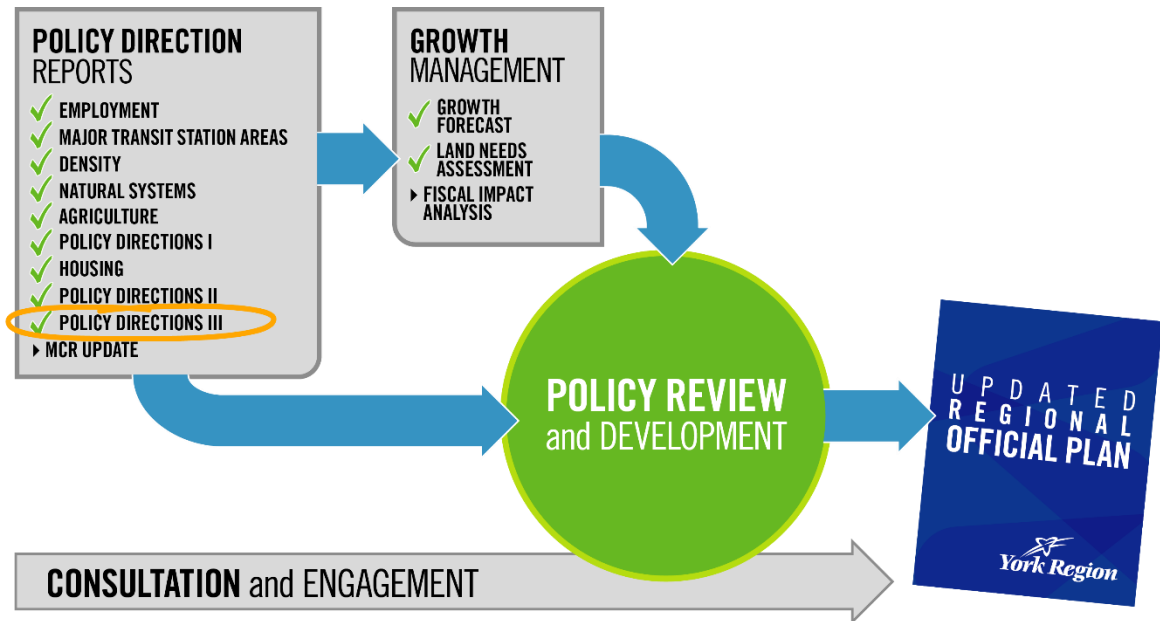
3. Background

Policy directions outlined in this report support development of a draft Regional Official Plan

Significant updates to Provincial plans and policies have been made since adoption of the ROP in 2010. To conform with these updates and new Provincial direction, York Region is required to update the ROP through an MCR by July 2022. Updated Provincial plans direct York Region to support and plan for the highest share of growth in Greater Toronto and Hamilton Area (GTHA) by 2051, accounting for 22% of GTHA population growth and 25% of employment growth. York Region's phased and agile approach to accommodate this growth was introduced in the [Proposed 2051 Forecast and Land Needs Assessment report](#).

This report provides updates and proposed policy directions on several policy areas in a series of Regional Official Plan Update Policy Direction Reports that support development of an updated draft ROP (Figure 1). Draft policies are being developed and an updated draft ROP is anticipated to be presented to Council in Q4 2021.

Figure 1
Municipal Comprehensive Review Components



This report builds on directions presented through past direction reports to Council

To support planning for growth and updating the ROP, a series of background and direction reports for several topic areas have been presented to the Council, including:

- [Planning for Employment Background Report](#) (May 2019)
- [Planning for Agriculture Background Report](#) (June 2019)
- [Planning for Density in New Communities](#) (June 2020)
- [Natural Systems Planning Background Report](#) (June 2020)
- [Major Transit Station Areas Endorsement Report](#) (September 2020)
- [Proposed Employment Area Mapping and Employment Conversions](#) (October 2020)
- [Regional Official Plan Update Policy Directions Report I](#) (December 2020)
- [Regional Official Plan Update Housing Challenges and Opportunities](#) (January 2021)
- [Proposed 2051 Forecast and Land Needs Assessment](#) (March 2021)
- [Regional Official Plan Update Policy Directions Report II](#) (March 2021)

Policy directions in this report are categorized under the following thematic areas:

1. Proposed Mapping
2. Phasing of Urban Expansion
3. Housing

Proposed policy directions summarized in this report build on, but do not reiterate, past directions previously presented to Council. Attachment 1 provides details of updates to Provincial plans and considerations for updated ROP policies.

Public consultation and stakeholder engagement for the Municipal Comprehensive Review has continued virtually during COVID-19

Public consultation is an integral component of the MCR process. Partnerships developed between the Region, the public, and other stakeholders inform ROP policy development. Since the [Update on Public Consultations for the Municipal Comprehensive Review](#) presented to Council in October 2019, technical consultation and public engagement have been undertaken to gather input. Examples include an in-person open house for Major Transit Station areas (MTSA), employment conversion requests meetings with landowners, Local Municipal Working Group sessions and meetings with the Building Industry and Land Development Association (BILD). Since the start of the COVID-19 pandemic in early 2020, consultation has continued virtually and online engagement such as online public information centres (PIC) for employment conversions and agricultural and natural heritage systems planning have been held to reach stakeholders.

4. Analysis

POLICY DIRECTIONS

Regional Official Plan Maps and Figures will be updated to support policies

Maps and figures support the visualization and interpretation of policies in the ROP. Updated maps reflect policy directions previously presented to Council on land use planning, growth management and protection of environmental areas and the agricultural system over the 30-year planning horizon. To align with an updated policy framework in the draft ROP, updated mapping will be based on the following:

- Simplify and relocate mapping content while eliminating duplicative and redundant information to improve overall readability
- Refine and update existing boundaries, delineations, and land use designations to conform with Provincial direction
- Add new maps including Land Use designations, Urban System, and Provincial Oak Ridges Moraine and Greenbelt Plan designations to the Regional Structure mapping series to provide additional clarity on the Regional Structure

- Add an additional Cycling Infrastructure map and an Environmentally Significant Groundwater Recharge Areas map

This report includes the draft Regional Structure mapping series (Attachment 2). For the purposes of consultation, the remaining maps are being updated and will be available as preliminary drafts on York.ca prior to release of the draft updated ROP.

Updated Regional Structure mapping will be simplified and restructured to reflect the proposed policy framework

To align with updated Regional Structure policy directions presented to Council in [December 2020](#), Regional Structure mapping will be refined and enhanced. As a result, a series of maps to display the Regional Structure, as illustrated in Attachment 2, are proposed as follows:

- Map 1 to display the foundational framework for the Regional Structure including the Urban System, Greenlands System, and Agricultural System
- Map 1A to identify land use designations such as Community Area, Employment Area, and Agricultural and Rural area in York Region
- Map 1B to show the land use overlays within Settlement Areas such as the Built-Up Area, the designated greenfield area and MTSAs
- Map 1C to display the Provincial Greenbelt Plan and Oak Ridges Moraine Plan designations in the Region.

Additional phasing policies in the Regional Official Plan will support financial sustainability

The amount of urban expansion to accommodate the population and employment growth to achieve the Region's 2051 forecast is substantial. As identified in the [Proposed 2051 Forecast and Land Needs Assessment report](#), 80% (3,400 ha) of the Region's Whitebelt lands is proposed to be added to the urban area as a result of the provincial land needs assessment methodology. Ensuring growth in these new areas materializes in a logical and phased manner will be critical to maintain financial sustainability and deliver complete communities for new residents with timely provision of services such as schools and community centres, roads, transit, and water and wastewater infrastructure. To manage this amount of growth over a 30-year period and across diverse geographies of the Region, strong phasing policies in both Regional and local municipal official plans are required.

At the Regional scale, a policy framework and associated mapping are being considered which require key Regional conditions to be met before secondary plans and development applications are considered for approval in urban expansion areas. Regional conditions being considered include:

- Regional water and wastewater infrastructure being available – preliminary timing for each urban expansion area would be identified through infrastructure Master Plans

and would be re-assessed each year through the Capital Plan and budget process in line with the principles of the Region's Fiscal Strategy and affordable growth

- Region's fiscal sustainability – infrastructure delivery to support growth in urban expansion areas be timed to manage debt
- Region achieving its average 50% intensification target on an annual basis
- Region on track to achieve a specific minimum population target (potentially 1.4 to 1.5 million people)

Proposed ROP policies will also require local municipalities to include policies in their official plans and secondary plans that build on Regional phasing criteria for logical phasing of community development.

Enhanced phasing requirements for local municipalities will promote development of complete communities without delaying the planning process

Phasing policy considerations at the local municipal scale ensure communities are developed in a logical and complete manner. High-level concept plans, or an alternative comprehensive growth management study should be completed for the entire urban expansion area in a local municipality that would identify more detailed phasing of development within new community areas, to the satisfaction of the Region, based on:

- Logical extensions to the existing urban area and initial expansion areas
- Logical and orderly progression of development
- Regional and local municipal infrastructure master plans that illustrate how proposed phasing will be supported from an infrastructure perspective
- Coordination with adjacent municipalities in cases where Regional and/or local infrastructure is shared

To avoid delays in the planning process, completion of high-level concept plans will be encouraged. It is proposed that these plans include lands identified as 'Future Urban' as shown on Map 1B in Attachment 2, although development will not be permitted to proceed until these areas are brought into the urban boundary through a MCR. Once Regional conditions are met, local municipalities can submit secondary plans and development applications based on the phasing strategy outlined in the high-level concept plan.

Building on direction in the ROP 2010, criteria for secondary plan approval are also being reviewed to ensure development of complete communities. Additional potential criteria include, but are not limited to:

- Logical progression of growth based on local infrastructure and local municipal services

- Sufficient Regional servicing capacity assigned to the municipality
- A limit to the number of secondary plans/blocks being approved for development at any given time
- A diverse range and mix of housing and community services
- A ratio of employment growth relative to population

A new Region-wide target for purpose-built rental housing will assist local municipal conformity and implementation

Updated Provincial plans require municipalities to establish, for the first time, a rental housing target in Regional official plans. The proposed Region-wide target for purpose-built rental housing is 1,000 new units per year. This target is based on the rental and affordability requirements identified in the [Regional Official Plan Update Housing Challenges and Opportunities](#) and [Proposed 2051 Forecast and Land Needs Assessment](#) reports and verified by Watson Economists and Associates Ltd. through the Foundational Housing Analysis work undertaken. It is proposed that this Region-wide target be distributed to local municipalities to assist with local municipal conformity and implementation. Purpose-built housing accounts for approximately 40% of total rental housing unit target to 2051. Proposed minimum targets are proposed to be proportionate to forecasted population and are outlined in Table 1.

Table 1
Local Municipal Purpose-Built Rental Unit Targets by 10-Year Period*

Municipality	2021 to 2031	2031 to 2041	2041 to 2051	2021 to 2051 Total Unit Target
Aurora	500	250	250	1,000
East Gwillimbury	750	750	750	2,250
Georgina	250	250	250	750
King	250	250	250	750
Markham	3,000	3,250	3,750	10,000
Newmarket	500	250	250	1,000
Richmond Hill	1,500	1,250	1,250	4,000
Vaughan	2,750	3,250	2,500	8,000
Whitchurch- Stouffville	500	500	750	1,750
York Region	10,000	10,000	10,000	30,000

Source: York Region's Planning and Economic Development Branch

*Numbers presented in this table show minimum purpose-built rental units per municipality.

In addition, as outlined in Attachment 1, the definition of “affordable” for rental and ownership housing is proposed to be revisited. This is in line with previous Council direction through the establishment and update of the [York Region Affordable Housing Measuring and Monitoring Guidelines](#).

ENGAGEMENT TO SUPPORT ROP UPDATE

Online engagement has been an effective method of consultation during the COVID-19 pandemic

The Province established a deadline of July 1, 2022 for upper- and single-tier municipalities to update their official plans through an MCR. This deadline was further confirmed by a letter on April 27, 2021 from the Minister of Municipal Affairs and Housing (Attachment 4). Public consultation and stakeholder engagement are key components of the ROP update and inform the policy development process. Since the beginning of the COVID-19 pandemic and due to Public Health Measures put in place in early 2020, in-person public events and meetings were restricted. As a result, consultation shifted to online and other engagement methods including mailouts, emails, and phone calls to reach stakeholders. Virtual public information sessions have been held for employment area mapping and conversions and for a joint session on the natural heritage system and agricultural system. Similarly, other GTHA municipalities have continued their planning-related public engagements through online platforms.

Recordings of online open houses have been posted for public viewing and can be viewed on demand by users for more information before feedback is gathered. Based on the topic and target audience, various online tools have been used to effectively interact and gather input. These tools generally offer mobile compatibility that can reach a broad range of audience and demographic groups that may not typically attend in-person public meetings. Alternative formats are available for online content, upon request.

Participation through online engagement has been greater than past in-person events

Online consultation has allowed for continued public engagement during the MCR process that will lead to a draft ROP before Council in Q4 2021. During the MCR process, online engagement campaigns were held that included over 60 participants at each event. These campaigns included live or pre-recorded webinars and interactive mapping tools and had higher participation turnout given the ease for participants to access the events remotely. Information on previous online engagements is available on york.ca/haveyoursay. A summary of public and stakeholder consultation undertaken through the MCR since October 2019 can be found in Attachment 3.

Upcoming engagements in 2021 prior to the release of a draft updated ROP include a social media campaign on policy directions and an online engagement for housing and growth management. As the year progresses, opportunities to hold in-person events in addition to virtual engagement will be evaluated in alignment with Public Health restrictions in the Region.

Engagement with Indigenous Communities informs the MCR and is coordinated with Master Servicing Plan updates

Relationships with Indigenous Communities continue to be built through the MCR process. Relationship building is intended to expand on previous efforts including engagements undertaken as part of the Archaeological Management Plan (ROPA 6) and joint consultation in 2015 for the MCR and Markham's Future Urban Area planning. Over the course of the MCR, three phases of engagement have been planned to share information throughout the ROP policy development and provide opportunities to listen and gather feedback from Indigenous communities.

Indigenous community engagement for the MCR is being coordinated with the Water and Wastewater Plan and Transportation Master Plan updates. Summary of proposed direction for the ROP key policy areas including Growth Management, Indigenous Engagement, Cultural Heritage, Natural Environment, Agricultural and Rural areas, Climate Change, Housing, Diversity and Inclusion has been shared with Indigenous Communities for their comments and feedback. To date, staff have met with four communities to introduce the MCR and Master Plan updates, provide information, actively listen, and increase awareness on policy areas of interest. Feedback will inform updates to the ROP.

Extensive consultation will follow release of the draft Regional Official Plan

Following presentation of the updated draft ROP to Council, a comprehensive consultation process to inform the public and gather feedback from stakeholders will be undertaken. A consultation plan is being developed that is anticipated to include engagement through the York Region website, online campaigns with interactive tools, and social media. The proposed consultation methods may include:

- Virtual open houses
- Interactive mapping
- Surveys
- Videos
- Presentations at York Region Planning Advisory Committee and Agriculture and Agri-food Advisory Committee meetings
- Media releases
- Online news story
- York Region Matters newsletter

Interested stakeholders will be notified of these events through social media and the MCR email distribution list. The number of interested individuals on this list has doubled since October 2019. Consultation with targeted groups including the Region's diverse ethnic

communities, youth and newcomers will be explored to facilitate feedback from under-represented groups.

Statutory requirements under the *Planning Act* require the draft ROP be made available to the public, and that at least one open house and a statutory public meeting be held. Written submissions of feedback will continue to be accepted and there will be an opportunity for public input at the statutory public meeting. Detailed legislated requirements will be outlined in the staff report that will accompany the draft updated ROP.

5. Financial

To support growth to 2051, an integrated growth management approach to land use planning and infrastructure delivery is required to manage the capital plan in line with the objectives of the Council approved Fiscal Strategy. To meet population and employment forecasts, timely delivery of growth-related servicing is required. Implications are explored in the [Proposed 2051 Forecast and Land Needs Assessment](#). Developing policies that manage growth in a fiscally sustainable way, including aligning growth with investment in infrastructure, is of paramount importance to maintain the long-term fiscal health of York Region. The policy development process, public consultation and stakeholder engagements being undertaken are within the MCR budget.

6. Local Impact

Local municipalities are key partners in updating and implementing the ROP. Local staff provide expertise and experiential knowledge from implementing ROP policies in their local municipal contexts. Local staff have been engaged on the topic areas presented in this report over the course of the MCR to gather ongoing input and feedback that inform the ROP policy review and update process. Regional staff will continue to work closely with local municipal staff to develop draft policies to be presented to Council in Q4 2021.

7. Conclusion

To conform with updated Provincial plans and policies, ROP policy and mapping updates are required. This omnibus report summarizes policy and mapping directions, further described in Attachments 1, which build on the basis for further consultation as policy development of a draft ROP progresses. Despite the unprecedented COVID-19 pandemic conditions, effective engagement will continue with the public, Indigenous communities, and stakeholders throughout the ROP update process and following the release of a draft updated ROP.

For more information on this report, please contact Sandra Malcic, Director, Long Range Planning at 1-877-464-9675 ext. 75724. Accessible formats or communication supports are available upon request.

Recommended by:



Paul Freeman, MCIP, RPP
Chief Planner



Dino Basso
Commissioner of Corporate Services

Approved for Submission:



Bruce Macgregor
Chief Administrative Officer

May 28, 2021
Attachments (4)
12862197

Provincial Policy Updates and Proposed Direction for York Region Official Plan Update

The Provincial planning policy framework has been updated including the following: Provincial Policy Statement (2020), A Place to Grow, the Growth Plan for the Greater Golden Horseshoe (2020) (The Provincial Growth Plan), Greenbelt Plan (2017) and Oak Ridges Moraine Conservation Plan (2017).

This Attachment, on a topic-specific basis, provides a summary of Provincial updates and considerations for updating the York Region Official Plan (ROP).

Table 1- Provincial policy updates and considerations for York Region Official Plan

Types of Policies/Topic Area	Brief Description of Provincial Policy Change	Considerations/Proposed Direction for York Region Official Plan
Aligning Growth and Infrastructure		
Phasing of Urban Expansion	<p>Updates to provincial forecasts in the Growth Plan have:</p> <ul style="list-style-type: none"> Extended the planning horizon from 2041 to 2051 (30 years) Increase population and employment forecasts for York Region to 2.02 million and 990,000, respectively – representing an increase of approximately 200,000 people and 90,000 jobs from previous forecasts 	<p>Policy considerations include:</p> <ul style="list-style-type: none"> Through updated mapping and associated policies, urban expansion lands would require to meet key Regional conditions before being available for development Regional conditions include the availability of Regional infrastructure (through the Capital Plan and Master Plans), the Region's financial sustainability, and may be tied to the Region achieving its annual intensification target Comprehensive planning at the local municipal level (i.e., high level concept plans, background studies, MES plans etc.) could proceed to avoid delays in development once the lands are serviced <p>Policy considerations to strengthen phasing at the local municipal level include:</p> <ul style="list-style-type: none"> A requirement for high level concept plans (or equivalent) for the entirety of the urban expansion area to identify more detailed phasing of development within new community areas to the satisfaction of the Region Additional minimal criteria for secondary plan approval may include:

ATTACHMENT 1

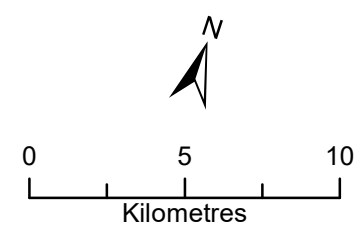
Types of Policies/Topic Area	Brief Description of Provincial Policy Change	Considerations/Proposed Direction for York Region Official Plan
		<ul style="list-style-type: none"> ○ logical progression of growth based on local infrastructure and local municipal services (schools etc.) ○ servicing allocation to the municipality ○ development of complete communities ○ a specified number of blocks receiving approval at once until the preceding phase is sufficiently built ○ a ratio of employment growth relative to population ○ coordination with adjacent municipalities in cases where Regional and/or local municipal infrastructure is shared ● Ability for the Town of East Gwillimbury to incorporate lands identified as “Future Urban” on Map 1B of Attachment 2 in high level concept plans
Housing	Updates to the Provincial Growth Plan require that a rental housing target be established.	<p>Policy considerations for establishing a new purpose-built rental unit target:</p> <ul style="list-style-type: none"> ● It is proposed that the Region-wide target for purpose-built rental housing be 1,000 new units per year. ● Distribute the region-wide target for purpose-built rental housing to local municipalities to assist with local municipal conformity and implementation. <p>Consideration for an updated the definition for “affordable” housing:</p> <ul style="list-style-type: none"> ● Rental: 125% of average market rent by bedroom type for the regional market area ● Ownership: Housing for which the purchase price results in annual accommodation costs which do not exceed 30 per cent of gross annual household income for low- and moderate-income households. Low- and moderate-income households are the lesser of households with incomes in the lowest 60 per cent of the income distribution for the regional market area or households with incomes in the lowest 60 per cent of the income distribution for the local market area.

DRAFT FOR CONSULTATION

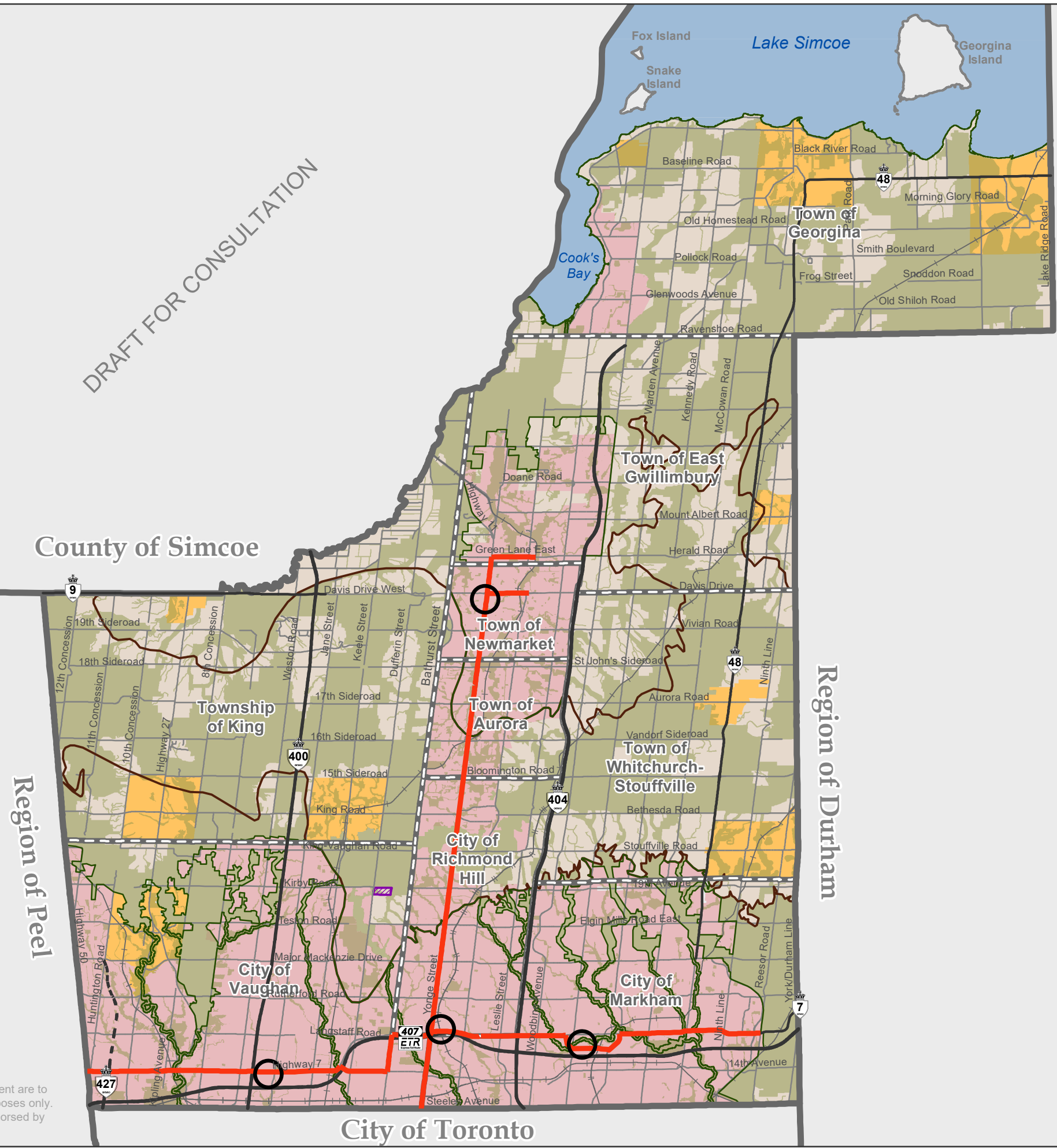
MAP 1

REGIONAL STRUCTURE

- Regional Centre
 - Regional Corridor
 - Urban Area
 - Towns and Villages
 - Agricultural System
 - Regional Greenlands System
 - Subject to Minister's Order February 3, 2015 and special provision policies 6.2.19 and 6.4.14
 - Oak Ridges Moraine Conservation Plan Boundary
 - Greenbelt Plan Boundary
- Provincial Highways**
- Existing
 - - - Under Construction
- Municipal Boundaries**
- Regional Municipal Boundary
 - - - Local Municipal Boundary



Produced by: The Regional Municipality of York
Corporate Services, Department, Planning and Economic Development Branch
© Copyright, The Regional Municipality of York 2021
© Copyright, The Regional Municipalities of Durham and Peel, County of Simcoe, City of Toronto
© Queen's Printer for Ontario 2003-2021, Includes Greenbelt and Oak Ridges Moraine Boundaries and Water Features

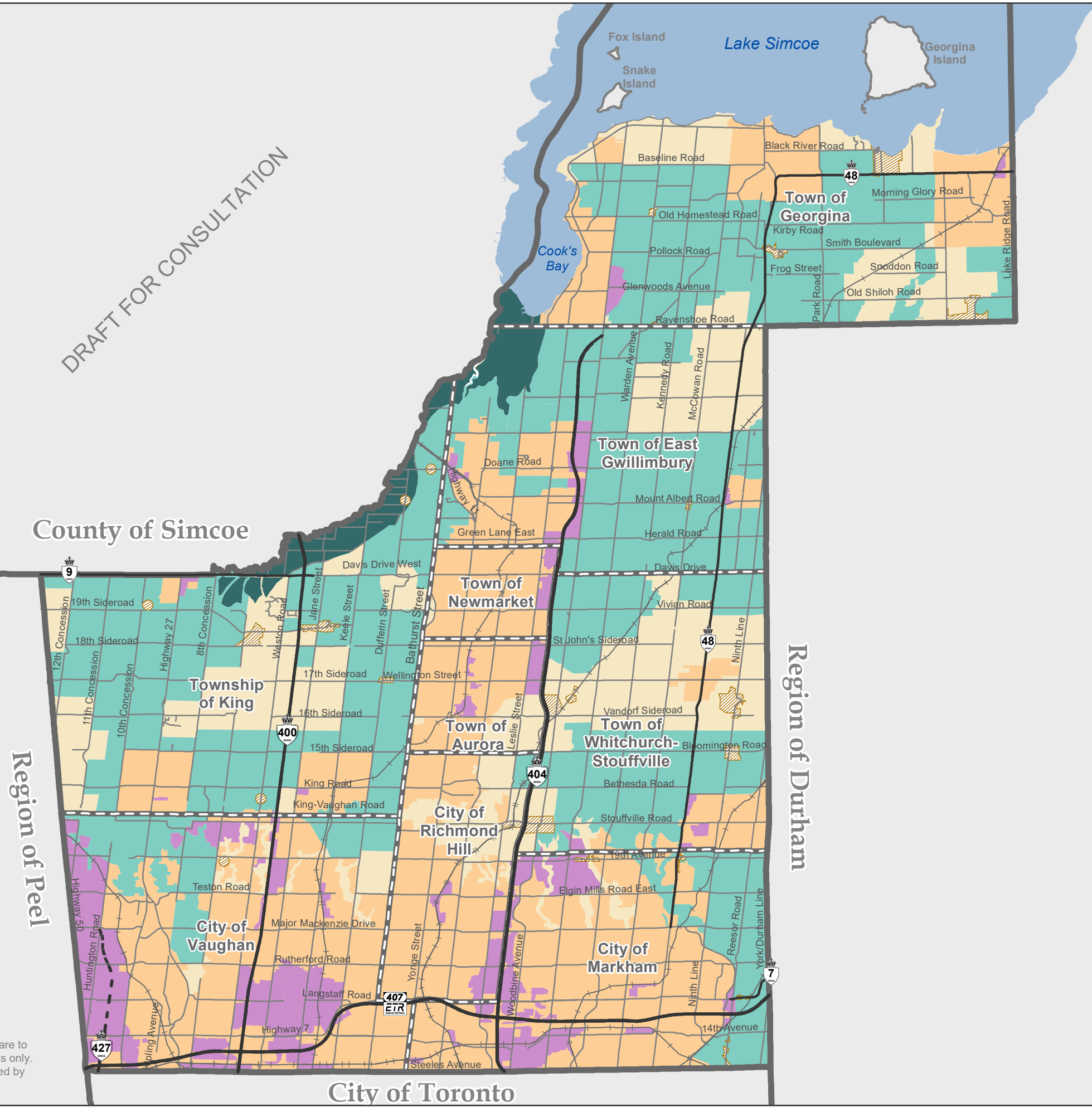


The contents of this document are to be used for discussion purposes only. This draft has not been endorsed by York Region Council.

DRAFT FOR CONSULTATION

MAP 1A

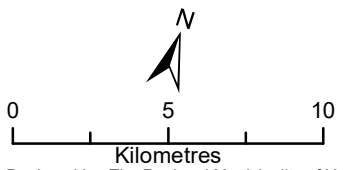
LAND USE DESIGNATIONS



- Community Area
- Employment Area
- Holland Marsh Specialty Crop Area
- Agricultural Area
- Rural Area
- Hamlet

- Provincial Highways**
- Existing
 - Under Construction

- Municipal Boundaries**
- Regional Municipal Boundary
 - Local Municipal Boundary



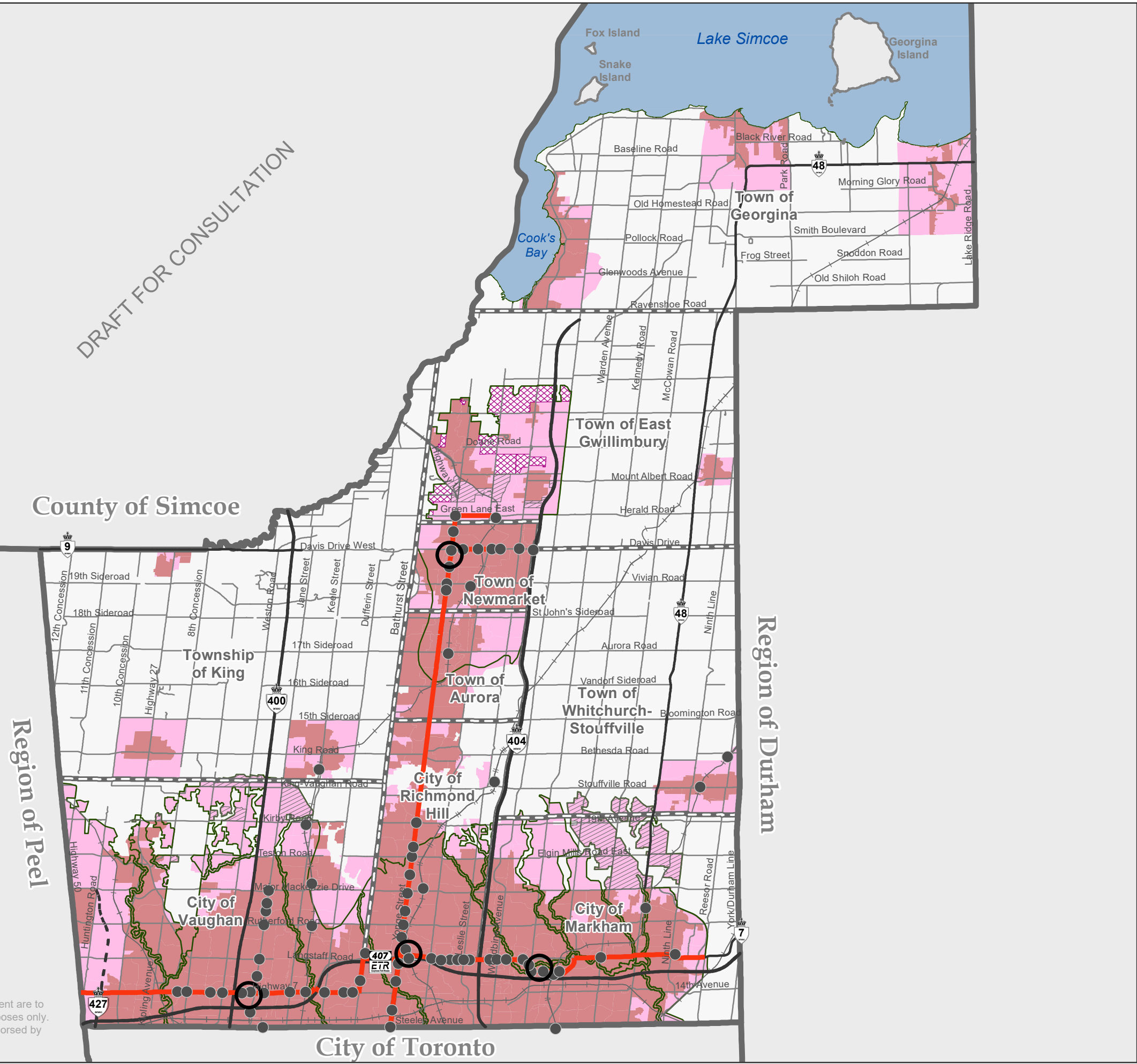
Produced by: The Regional Municipality of York
Corporate Services, Department, Planning and Economic Development Branch
© Copyright, The Regional Municipality of York 2021
© Copyright, The Regional Municipalities of Durham and Peel, County of Simcoe, City of Toronto
© Queen's Printer for Ontario 2003-2021, Includes Greenbelt and Oak Ridges Moraine Boundaries and Water Features

The contents of this document are to be used for discussion purposes only. This draft has not been endorsed by York Region Council.

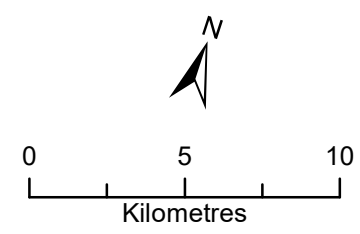
MAP 1B

URBAN SYSTEM

DRAFT FOR CONSULTATION



- Regional Centre
- Regional Corridor
- Major Transit Station Area
- Built Up Area
- ▨ Future Urban Area
- Greenbelt Plan Boundary
- Designated Greenfield Area**
- Designated Greenfield Area
- ▨ New Community Area
- Provincial Highways**
- Existing
- - - Under Construction
- Municipal Boundaries**
- Regional Municipal Boundary
- - - Local Municipal Boundary




The contents of this document are to be used for discussion purposes only. This draft has not been endorsed by York Region Council.

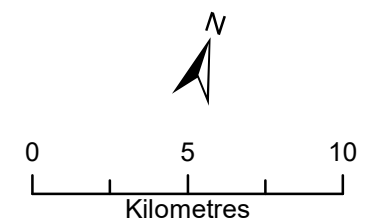
Produced by: The Regional Municipality of York
Corporate Services, Department, Planning and Economic Development Branch
© Copyright, The Regional Municipality of York 2021
© Copyright, The Regional Municipalities of Durham and Peel, County of Simcoe, City of Toronto
© Queen's Printer for Ontario 2003-2021, Includes Greenbelt and Oak Ridges Moraine Boundaries and Water Features

DRAFT FOR CONSULTATION

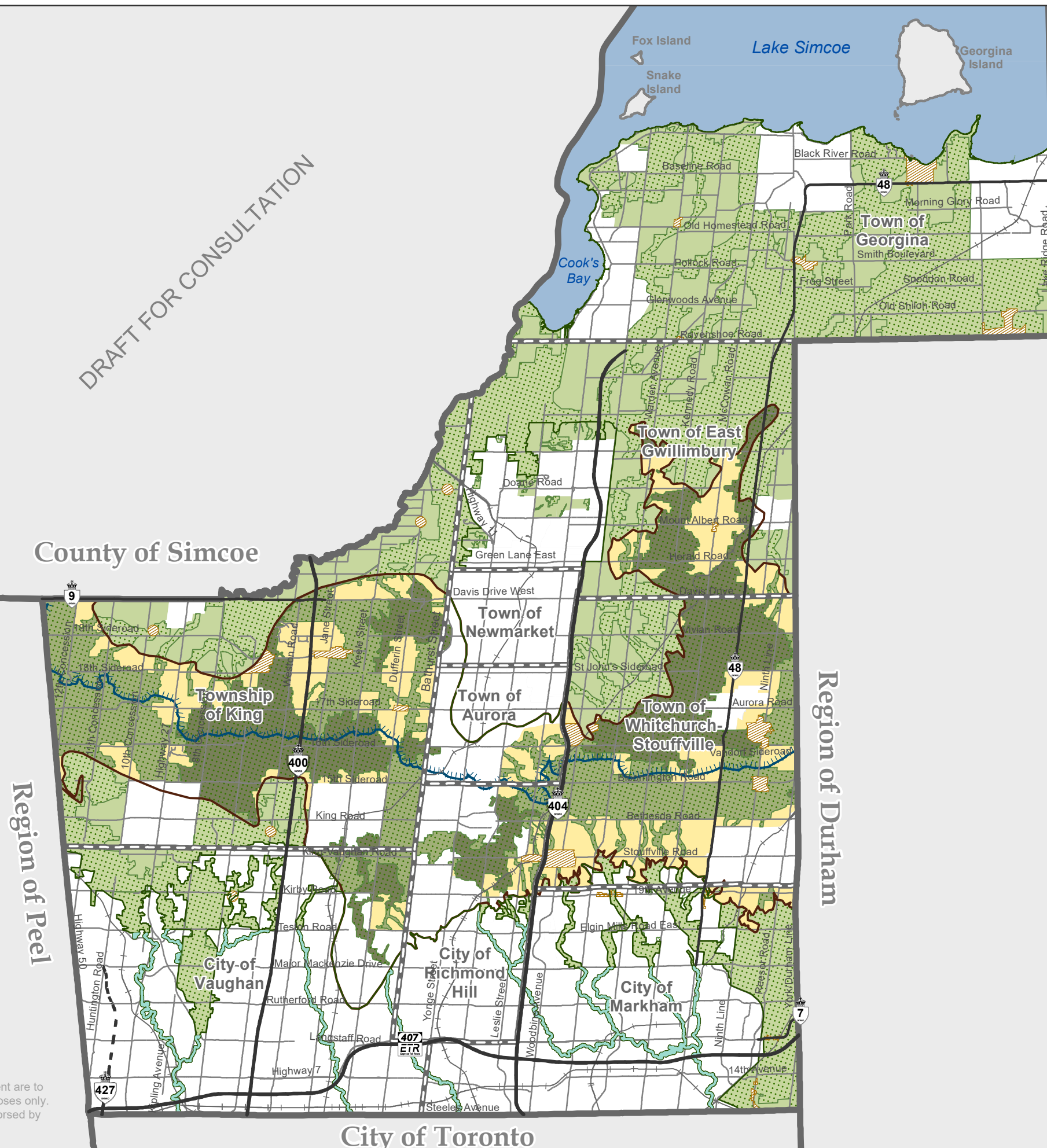
MAP 1C

PROVINCIAL OAK RIDGES MORaine CONVERSATION PLAN AND GREENBELT PLAN DESIGNATIONS

-  Provincial Natural Heritage System
 -  Hamlet
 -  Area Subject to the Lake Simcoe Protection Plan
- Oak Ridges Moraine Conservation Plan (ORMCP)**
-  Oak Ridges Moraine Conservation Plan Boundary
 -  Natural Core Designation
 -  Countryside Area Designation
 -  Natural Linkage Designation
- Greenbelt Plan**
-  Greenbelt Plan Boundary
 -  Protected Countryside Designation
 -  Urban River Valleys Designation
- Provincial Highways**
-  Existing
 -  Under Construction
- Municipal Boundaries**
-  Regional Municipal Boundary
 -  Local Municipal Boundary



Produced by: The Regional Municipality of York
Corporate Services, Department, Planning and Economic Development Branch
© Copyright, The Regional Municipality of York 2021
© Copyright, The Regional Municipalities of Durham and Peel, County of Simcoe,
City of Toronto
© Queen's Printer for Ontario 2003-2021, Includes Greenbelt and Oak Ridges Moraine
Boundaries and Water Features



The contents of this document are to be used for discussion purposes only. This draft has not been endorsed by York Region Council.

Summary of Public and External Stakeholder Consultation for the Municipal Comprehensive Review (MCR) since October 2019

This Attachment includes two tables. Table 1 provides a summary of public consultation and stakeholder engagement by type from October 2019 to May 2021 for updating the York Region Official Plan (ROP).

Table 1: October 2019-May 2021 Summary of Public and External Stakeholder Consultation for Municipal Comprehensive Review (MCR)

TYPE	TIMEFRAME	ACTIVITY	DELIVERY METHOD	DESCRIPTION
General Public Engagement				
Public Engagement	Ongoing	MCR Webpage and Newsletters	Online Engagement	<ul style="list-style-type: none"> • Webpages dedicated to the MCR and ongoing public consultation are available to the public through york.ca. These are updated regularly with MCR related initiatives and relevant York Region Official Plan topics to inform and educate the public • E-newsletters are emailed to subscribers and posted to york.ca as a formal communication tool to inform stakeholders about the technical updates and the consultation process for the MCR. All stakeholders can subscribe to receive the newsletter and get regular updates on local events and social media campaigns. Over 700+ subscribers regularly receive updates and are posted to york.ca

ATTACHMENT 3

TYPE	TIMEFRAME	ACTIVITY	DELIVERY METHOD	DESCRIPTION
Public Engagement	October 2019	Walk and Talk with York Region's Chief Planner	In-person Session	<ul style="list-style-type: none"> • A 'Walk and Talk' tour with York Region's Chief Planner held in Newmarket and attended by both Regional staff and local municipal staff • A continuation of the 'Walk and Talk' series previously held in other areas of York Region to educate the public on York Region's urban structure • Opportunity for residents to hear about what York Region and the Town of Newmarket are doing to promote complete communities and explore the planning context in the downtown area of Newmarket
Public Engagement	October 2019, February 2021	Wastewater Master Plan Open Houses	In-person and Online Sessions	<ul style="list-style-type: none"> • Regional Planning staff participated in open houses to coordinate engagement efforts and outline connections to the York Region Official Plan as part of York Region's commitment to integrated and transparent planning • Four sessions were held which included meetings and workshops with various stakeholders, partners, government agencies and the public • Feedback collected from these sessions is being used to inform sections of the York Region Official Plan Update and to develop York Region's Water and Wastewater Master Plan Update
Public Engagement	December 2019 - March 2020	Major Transit Station Area Open Houses	In-person Sessions	<ul style="list-style-type: none"> • Three public open houses hosted by local municipal staff were held in Richmond Hill, Newmarket, and Vaughan to help gather public input on the Major Transit Station

TYPE	TIMEFRAME	ACTIVITY	DELIVERY METHOD	DESCRIPTION
				<p>Area boundaries and density targets</p> <ul style="list-style-type: none"> Feedback collected has helped to inform the refinement of boundary delineations, density targets, and potential Major Transit Station Area policies
Public Engagement	May 2019 - June 2020	Major Transit Station Area Interactive Map	Online Engagement	<ul style="list-style-type: none"> Online interactive map to inform stakeholders and the public about Major Transit Station Areas and gather input from participants Education tool used to highlight growth that is planned to occur along major transit corridors and used to support numerous interactive engagement efforts Feedback collected has helped to inform the refinement of boundary delineations, density targets, and potential Major Transit Station Area policies
Public Engagement	June 2020	Public Information Centre: Planning for Employment	Online Engagement	<ul style="list-style-type: none"> Planning for employment online public information centre used to engage with the public on the proposed employment area mapping and employment conversions Delivery methods included an online interactive map tool, survey, and interactive webinar Feedback gathered helped to inform the refinement of employment area mapping, input for employment conversions, policy directions and future updates to the draft York Region Official Plan
Public Engagement	September 2020 - November 2020	Public Information Centre: Agriculture and Natural Heritage Systems Planning	Online Engagement	<ul style="list-style-type: none"> Public engagement to inform and educate about agriculture and natural heritage systems planning and mapping, building on the Planning for Agriculture Background

TYPE	TIMEFRAME	ACTIVITY	DELIVERY METHOD	DESCRIPTION
				<p>Report and Regional Official Plan Natural Systems Planning Background Report presented to Regional Council in June 2019 and June 2020, respectively</p> <ul style="list-style-type: none"> • Various delivery methods included an online pre-recorded webinar, interactive map, online survey, letters to stakeholders and landowner inquiries addressed by Regional planning staff • Feedback gathered was used for the refinement of agricultural and natural heritage systems mapping and to inform updates to York Region Official Plan policy directions and future updates to the draft York Region Official Plan
Public Engagement	March 2021 - April 2021	15 Minute Neighborhood Survey	Online Engagement	<ul style="list-style-type: none"> • Online survey featured on york.ca to receive public input about communities across York Region based on the 15-minute neighborhood concept and measuring complete communities • Feedback will assist in the development of a complete community assessment tool and will help to inform future updates to the York Region Official Plan which will include complete communities as a core policy direction
Public Engagement	May 2021	York Region Official Plan Update Survey	Online Engagement	<ul style="list-style-type: none"> • Engagement on Regional Official Plan policy directions reported to council in December 2020 and March 2021 • Gather public input about Regional Official Plan policy directions and raise awareness about the MCR process through social media and an online survey featured on

TYPE	TIMEFRAME	ACTIVITY	DELIVERY METHOD	DESCRIPTION
				york.ca
Targeted Public Engagement				
Public Engagement	January 2020	Targeted Newcomers to Canada Engagement Session	In-person Session	<ul style="list-style-type: none"> An education session targeted to newcomers to Canada about the MCR process and updating the Regional Official Plan Regional planning staff delivered a presentation and held an interactive focus group session that took place in Richmond Hill to gather input from newcomers to Canada
Public Engagement	January 2020, March 2020	Targeted Senior Engagement Sessions	In-person Sessions	<ul style="list-style-type: none"> Education sessions targeted to seniors in York Region about the MCR process and updating the Regional Official Plan Regional planning staff delivered presentations and interactive focus group sessions that took place in Whitchurch-Stouffville, Georgina, and Aurora to gather input from seniors
Public Engagement	March 2020	Targeted Youth Engagement Session	In-person Session	<ul style="list-style-type: none"> An interactive focus group session targeted to youth in York Region that took place in Aurora and involved participants between the ages of 13 and 18
Local Municipal and Conservation Authority Engagement				
External Stakeholder Engagement	November 2019	Local Municipal and Conservation Authority Agriculture and Natural Heritage Systems Planning Workshop	In-person Session	<ul style="list-style-type: none"> Held a workshop with local municipal staff and conservation authority staff about planning for natural heritage systems and agriculture that helped to inform the Regional Official Plan Natural Systems Planning Background Report presented to Regional council in June 2020 Discussions to date have helped to finalize agriculture and natural heritage systems

TYPE	TIMEFRAME	ACTIVITY	DELIVERY METHOD	DESCRIPTION
				policy directions, mapping, policies, and updates to the future draft York Region Official Plan
External Stakeholder Engagement	November 2019	Local Municipal Employment Area Workshops	In-person Sessions	<ul style="list-style-type: none"> Held workshops with local municipal staff regarding planning for employment used to build on engagement outlined in the Update on Public Consultations for the Municipal Comprehensive Review Report presented to Regional Council in October 2019 Included discussions about conversion criteria and options for employment area designations Discussions were used to inform the Planning for Employment and Employment Conversions Report to Regional Council in March 2020, policy directions, mapping and updates to the future draft York Region Official Plan
External Stakeholder Engagement	November 2019 - December 2019	1:1 Meetings with Local Municipal Staff: Employment Conversions	In-person Sessions	<ul style="list-style-type: none"> 11 individual meetings with 9 area local municipalities to consult with planning staff regarding proposed employment area boundaries and site-specific conversion requests Discussions were used to inform the Planning for Employment and Employment Conversions Report to Regional Council in March 2020, policy directions, mapping and updates to the future draft York Region Official Plan
External Stakeholder Engagement	November 2019 - May 2021	MCR Local Municipal Working Group	In-person and Online Sessions	<ul style="list-style-type: none"> Extensive collaboration with local municipal partners and opportunity to provide input on the MCR throughout all stages of the process

TYPE	TIMEFRAME	ACTIVITY	DELIVERY METHOD	DESCRIPTION
				<ul style="list-style-type: none"> • Ongoing consultation sessions between York Region staff and local municipal planning and Conservation Authority staff • 17+ sessions held including some joint sessions with local municipal staff and conservation authority staff • Feedback was collected on all major policy directions and used to inform the development of a future draft York Region Official Plan
External Stakeholder Engagement	October 2020	Local Municipal Housing Working Group	Online Session	<ul style="list-style-type: none"> • Ongoing presentation and consultation sessions between York Region staff and local municipal planning staff • Local municipal staff provided input on the York Region housing portfolio • Discussions to date helped to inform updates to policy directions, housing policies in the development of the future draft Regional Official Plan and the Regional Official Plan Update Housing Challenges and Opportunities Report presented to Regional Council in January 2021
External Stakeholder Engagement	October 2019- May 2021	Local Municipal Major Transit Station Area Consultation	In-person and Online Sessions	<ul style="list-style-type: none"> • 10+ meetings were held with local municipal staff and used to build on engagement outlined in the Update on Public Consultations for the Municipal Comprehensive Review Report presented to Regional Council in October 2019 • Ongoing consultation with local municipal staff on boundary delineations and density targets, feedback will be used to inform final proposed Major Transit Station Areas

TYPE	TIMEFRAME	ACTIVITY	DELIVERY METHOD	DESCRIPTION
External Stakeholder Engagement	March 2020	Natural Heritage System Mapping Consultation with Toronto and Region Conservation Authority and Lake Simcoe Region Conservation Authority	Online Sessions	<ul style="list-style-type: none"> Held meetings with conservation authority staff regarding natural heritage systems mapping. Discussions to date have assisted in the refinement of natural heritage system mapping, policy directions and updates to the future draft York Region Official Plan
External Stakeholder Engagement	May 2020, February 2021	MCR Consultation with Toronto and Region Conservation Authority	Online Sessions	<ul style="list-style-type: none"> Provided a general MCR update to conservation authority staff to help inform policy and map updates to the future draft Regional Official Plan
External Stakeholder Engagement	September 2020-December 2020	1:1 Meetings with Local Municipal Staff: Agricultural Mapping	Online Sessions	<ul style="list-style-type: none"> Series of meetings were held to gather feedback from local municipal staff on proposed refinements to Provincial agricultural system mapping Discussions to date have assisted in the refinement of agricultural mapping, policy directions and updates the future draft York Region Official Plan
External Stakeholder Engagement	March 2020	1:1 Meetings with Local Municipal Staff: Natural Heritage Systems Mapping	Online Sessions	<ul style="list-style-type: none"> Series of meetings were held to gather feedback from local municipal staff on natural heritage systems Mapping Discussions to date have assisted in the refinement of natural heritage system mapping, policy directions and updates the future draft York Region Official Plan
External Stakeholder Engagement	October 2020	Local Municipal Forecast and Land Needs Assessment Consultation	Online Session	<ul style="list-style-type: none"> Provided an update on the Regional forecast and land needs assessment to local municipal staff and gathered input from local municipal staff to help inform the

TYPE	TIMEFRAME	ACTIVITY	DELIVERY METHOD	DESCRIPTION
				2051 Forecast and Land Needs Assessment Report to Regional Council in March 2021, policy directions updates the future draft York Region Official Plan
External Stakeholder Engagement	April 2021-May 2021	1:1 Meetings with Local Municipal Staff: Forecast and Land Needs Assessment	Online Sessions	<ul style="list-style-type: none"> Ongoing consultation with local municipal staff to receive feedback on proposed forecasts and land needs presented in the 2051 Forecast and Land Needs Assessment Report to Regional Council in March 2021
Building Industry and Land Development Association (BILD) Engagement				
External Stakeholder Engagement	December 2019, February 2020, March 2020, May 2020, September 2020, November 2020, January 2021, April 2021	York Region BILD MCR Advisory Committee	In-person and Online Sessions	<ul style="list-style-type: none"> Regional planning staff attended the York Region BILD MCR Advisory Committee and BILD York Chapter meetings on a regular basis, to provide updates on the MCR and related initiatives such as: Current MCR Initiatives and Schedule Updates MCR Public Consultation
External Stakeholder Engagement	June 2020, January 2021	BILD York Chapter Meetings	Closed Sessions	<ul style="list-style-type: none"> Co-ordinated MCR and Master Plan Updates MCR related Report Updates Update on Provincial Initiatives Employment Conversions and Employment Land Mapping Provincial Land Needs Assessment Methodology Major Transit Station Areas Planning for Density in New Community Areas Housing Agricultural Mapping

TYPE	TIMEFRAME	ACTIVITY	DELIVERY METHOD	DESCRIPTION
				<ul style="list-style-type: none"> Natural Heritage Systems Mapping Growth and Infrastructure Alignment
External Stakeholder Engagement	November 2019, December 2019, January 2020, February 2020, May 2020, January 2021	BILD Land Needs Assessment Technical Working Group	In-person and Online Session	<ul style="list-style-type: none"> Regional Planning staff presented key directions of the York Region Forecast and Land Needs Assessment to the BILD Land Needs Assessment Technical Working Group
York Region Council and Committee Engagement				
Council Engagement	October 2019	Council Education Session: Vision 2051	In-person Session	<ul style="list-style-type: none"> Provided an education session to Regional Council regarding Vision 2051
Council Engagement	October 2019, December 2019, February 2020, September 2020, February 2021	Planning Advisory Committee Meetings	In-person and Online Sessions	<ul style="list-style-type: none"> Regional planning staff attended the Planning Advisory Committee meetings on a regular basis, to provide updates on the MCR and related initiatives such as: Current MCR Initiatives and Schedule Updates Implications of the new Provincial Plans and Regional MCR Workplan Growth and Infrastructure Alignment Planning for Population Update on Provincial Initiatives Major Transit Station Areas Endorsement Report Planning for Employment and Employment Conversions Report Housing Challenges and Opportunities Land Budget and Land Needs Assessment Results
Council Engagement	November 2019, January 2020	Agriculture and Agri-Food Advisory	In-person and Online Sessions	<ul style="list-style-type: none"> Regional planning staff attended Agriculture and Agri-Food Advisory Committee

TYPE	TIMEFRAME	ACTIVITY	DELIVERY METHOD	DESCRIPTION
	September 2020, December 2020, January 2021, March 2021	Committee Meetings		<p>meetings on a regular basis, to provide updates on the MCR and related initiatives such as:</p> <ul style="list-style-type: none"> • Agriculture and Agri-food Strategy Update • Draft Climate Change Action Plan Update • Current MCR Initiatives Update • Official Plan Agriculture Policy Directions Updates • Regional Official Plan Natural Systems Planning Updates
Council Engagement	March 2020	Council Education Session: Planning for Employment	Online Session	<ul style="list-style-type: none"> • Provided an MCR update and education session to Regional Council regarding planning for employment
Council Engagement	March 2020, January 2021	Council Education Session: Forecast and Land Needs Assessment	Online Sessions	<ul style="list-style-type: none"> • Provided an MCR update and education session to Regional Council regarding the forecast and land needs assessment
Council Engagement	November 2020	Accessibility Advisory Committee	Online Session	<ul style="list-style-type: none"> • Regional planning staff provided an update on the Municipal Comprehensive Review and integrating a diversity and inclusion lens in the updated York Region Official Plan

TYPE	TIMEFRAME	ACTIVITY	DELIVERY METHOD	DESCRIPTION
Local Municipal Council				
Council Engagement	April 2021-May 2021	Presentation of Forecast and Land Needs Assessment to Local Municipal Councils	Online Sessions	<ul style="list-style-type: none"> York Region staff provided presentation to local municipal councils about forecast and land needs assessment based on information presented in the 2051 Proposed Land Needs Assessment Report to Regional Council in March 2021
Other				
External Stakeholder Engagement	October 2019 - January 2020	Employment Conversion Landowner Meetings	In-person Sessions	<ul style="list-style-type: none"> Over 60+ site-specific landowner meetings held across 9 local municipalities and attended by local municipal staff between July 2019 and January 2020 Building on previous sessions that were mentioned in the Update on Public Consultations for the Municipal Comprehensive Review Report presented to Regional Council in October 2019 Provided Regional and local municipal staff with the opportunity to discuss staff's preliminary evaluation of their sites and for landowners to present additional information Comments were received from residents and business owners, including large employers, who identified issues of concern and expressed views on employment area conversions Feedback collected was considered by staff when finalizing recommendations for employment conversions

Table 2: May 2021 Onwards Summary of Upcoming Public and External Stakeholder Consultation for Municipal Comprehensive Review (MCR)

Extensive consultation will continue following the release of the draft ROP to adoption. Table 2 summarizes the upcoming public and stakeholder engagement on draft ROP from May 2021 until Q3 2021.

TYPE	TIMEFRAME	ACTIVITY	DELIVERY METHOD	DESCRIPTION
General Public Engagement				
Public Engagement	Q2/Q3 2021	Public Information Centre: Housing and Growth Management Engagement	Online Engagement	<ul style="list-style-type: none"> Public information centre will be based on housing and growth management using online engagement such as an open house, and other tactics including surveys or social media Online engagement and consultation on proposed forecast and land needs assessment, coordinated with consultation on Master Plans and with proposed Regional Official Plan policy direction topic areas such as housing and growth management
Public Engagement	Q3 2021	Water and Wastewater Master Plan Open Houses	Online Sessions	<ul style="list-style-type: none"> Regional Planning staff will participate in open houses to coordinate engagement efforts and outline connections to the York Region Official Plan as part of York Region's commitment to integrated and transparent planning Building on previous sessions and open houses mentioned in Table 1 of this attachment, the final open houses for the Water and Wastewater Master Plan are scheduled for Q3 2021 and will present the preferred water servicing strategy and water and wastewater infrastructure solution under consideration

TYPE	TIMEFRAME	ACTIVITY	DELIVERY METHOD	DESCRIPTION
Local Municipal and Conservation Authority Engagement				
External Stakeholder Engagement	Q2/Q3 2021	MCR Local Municipal Working Group	Online Sessions	<ul style="list-style-type: none"> Ongoing consultation sessions between York Region, local municipalities, and conservation authorities to inform updates to the future draft York Region Official Plan
External Stakeholder Engagement	Q2/Q3 2021	1:1 Meetings with Local Municipal Staff: Forecast and Land Needs Assessment	Online Sessions	<ul style="list-style-type: none"> Ongoing consultation with local municipal staff to receive feedback on proposed forecast and land needs presented in the 2051 Forecast and Land Needs Assessment Report to Regional Council in March 2021
External Stakeholder Engagement	Q3 2021	1:1 Meetings with Local Municipal Staff and Conservation Authority Staff	Online Sessions	<ul style="list-style-type: none"> Series of ongoing meetings to discuss draft Regional Official Plan direction and detailed outcomes of MCR Local Municipal Working Group meetings
External Stakeholder Engagement	Q3 2021	Local Municipal Major Transit Station Area Consultation	Online Sessions	<ul style="list-style-type: none"> Ongoing consultation with local municipal staff building on previous sessions outlined in Table 1 of this attachment. Discussions about boundary delineations and density targets, with a focus on Jane Street Major Transit Station Areas Feedback will be used to inform proposed Major Transit Station Areas
Building Industry and Land Development Association (BILD) Engagement				
External Stakeholder Engagement	Q2/Q3 2021	BILD Meetings	Online Sessions	<ul style="list-style-type: none"> Proposed 2051 Forecast and Land Needs Assessment Joint Municipal Comprehensive Review, Water and Wastewater Master Plan and Transportation Master Plan

TYPE	TIMEFRAME	ACTIVITY	DELIVERY METHOD	DESCRIPTION
York Region Committee Engagement				
External Stakeholder Engagement	Q2/Q3 2021	Planning Advisory Committee Meetings	Online Sessions	<ul style="list-style-type: none"> Regional planning staff may attend Advisory Committee meetings to provide updates on the MCR and related initiatives
External Stakeholder Engagement	Q2/Q3 2021	Agriculture and Agri-Food Advisory Committee Meetings	Online Sessions	

**Ministry of
Municipal Affairs
and Housing**

Office of the Minister

777 Bay Street, 17th Floor
Toronto ON M7A 2J3
Tel.: 416 585-7000

**Ministère des
Affaires municipales
et du Logement**

Bureau du ministre

777, rue Bay, 17^e étage
Toronto ON M7A 2J3
Tél.: 416 585-7000



234-2021-2164

April 27, 2021

Wayne Emmerson
Regional Chair
Region of York
17250 Yonge Street
Newmarket ON L3Y 6Z1
wayne.emmerson@york.ca

Dear Regional Chair Emmerson:

As part of Ontario's COVID-19 economic recovery efforts, this past summer changes were made to **A Place to Grow: Growth Plan for the Greater Golden Horseshoe** to help increase housing supply, create more jobs, attract business investments, and better align infrastructure, while protecting the environment and the Greenbelt.

The date by which upper and single-tier municipalities must have their official plans in conformity with the updated policies in **A Place to Grow** is July 1, 2022. This can be achieved through phasing a series of official plan amendments, adopting a new official plan, or through a single official plan amendment.

As you know, **A Place to Grow's** policies require municipalities to designate all land necessary to accommodate the population and employment growth forecasts contained in Schedule 3, which are unique to each upper- and single-tier municipality, or to a higher forecast established by the relevant municipality. **The Region of York must plan to accommodate a population of 2,020,000 and 990,000 jobs by 2051.** Municipalities will use the land needs assessment methodology to determine the quantity of land required to satisfy their forecasted growth targets to the 2051 horizon. I encourage you to work with Ministry of Municipal Affairs and Housing staff as you work towards meeting conformity.

Updated official plans will play a critical role in helping more Ontarians find a home that meets their needs, as well as supporting our economic recovery from COVID-19. For these reasons, there will be *no deadline extensions for any municipalities*. Municipalities and their staff have had significant time and assistance from the Ministry of Municipal Affairs and Housing to ensure there would be no delays in conformity.

.../2

The *Places to Grow Act, 2005*, provides significant powers for the Minister of Municipal Affairs and Housing to intervene in municipal official plans in the event of non-conformity with **A Place to Grow** policies. This includes failing to plan for all forecasted growth to the required horizon, by the conformity deadline of July 1, 2022. The Ministry continues to be available to assist you and your staff so that official plans or official plan amendments will be submitted within the required timeframe.

Thank you for your ongoing commitment to your community, and for your collaboration and engagement in support of effective growth management in the Greater Golden Horseshoe. Once again, I encourage you to work with my Ministry staff at the various stages as you work towards meeting conformity. Please contact Assistant Deputy Minister for the Ontario Growth Secretariat, Sandra Bickford, at Sandra.Bickford@ontario.ca, if you have any further questions or concerns regarding **A Place to Grow** or the policies within it.

Sincerely,



Steve Clark
Minister

- c. Bruce Macgregor, Chief Administrative Officer
Paul Freeman, Chief Planner, Planning and Economic Development

**Ministry of
Municipal Affairs
and Housing**

Office of the Minister

777 Bay Street, 17th Floor
Toronto ON M7A 2J3
Tel.: 416 585-7000

**Ministère des
Affaires municipales
et du Logement**

Bureau du ministre

777, rue Bay, 17^e étage
Toronto ON M7A 2J3
Tél.: 416 585-7000



234-2021-2164

27 avril 2021

Wayne Emmerson
Président du conseil régional
Région de York
17250 Yonge Street
Newmarket ON L3Y 6Z1
wayne.emmerson@york.ca

Monsieur Emmerson,

Dans le cadre des efforts de relance économique face à la COVID-19, l'Ontario a apporté des modifications au **Plan de croissance de la région élargie du Golden Horseshoe : En plein essor** l'été dernier dans le but d'accroître l'offre de logements, de créer plus d'emplois, d'attirer des investissements et de mieux harmoniser les infrastructures tout en protégeant l'environnement et la ceinture de verdure.

Les municipalités de palier supérieur et à palier unique ont jusqu'au 1^{er} juillet 2022 pour assurer la conformité de leurs plans officiels aux politiques mises à jour énoncées dans le document **En Plein Essor**. Pour ce faire, elles peuvent apporter une seule modification à leur plan officiel ou une série de modifications qui seront mises en œuvre graduellement, ou encore adopter un nouveau plan.

Comme vous le savez, selon les politiques énoncées dans le document **En plein essor**, les municipalités doivent désigner tous les territoires nécessaires pour faire face aux prévisions de croissance démographique et économique indiquées à l'annexe 3, lesquelles sont propres à chaque municipalité de palier supérieur ou à palier unique, ou aux prévisions supérieures établies par la municipalité visée. **La région de York doit établir ses plans de façon à pouvoir accueillir au moins 2 020 000 habitants et 990 000 emplois d'ici 2051.** Les municipalités auront recours à la méthode d'évaluation des besoins en terrains pour déterminer la quantité de terres dont elles auront besoin pour répondre aux cibles de croissance prévues d'ici l'horizon 2051. Je vous encourage à collaborer avec le personnel du ministère des Affaires municipales et du Logement dans vos démarches pour vous conformer aux nouvelles exigences.

.../2

La mise à jour des plans officiels est une étape essentielle pour aider un plus grand nombre d'Ontariennes et d'Ontariens à trouver un logement qui répond à leurs besoins tout en soutenant nos efforts de relance économique à la suite de la COVID-19. Pour ces raisons, il n'y aura *aucun report des délais fixés pour les municipalités*. Les municipalités et leur personnel ont eu suffisamment de temps et d'aide de la part du ministère pour se conformer aux nouvelles mesures dans les délais impartis.

La *Loi de 2005 sur les zones de croissance* confère au ministre des Affaires municipales et du Logement l'autorité nécessaire pour intervenir dans les plans officiels des municipalités en cas de non-conformité aux politiques énoncées dans le document **En plein Essor**. Ceci inclut le défaut de planifier, d'ici la date butoir du 1^{er} juillet 2022, en fonction de la croissance prévue jusqu'à l'horizon établi. Vous-même et votre personnel pouvez continuer à compter sur l'appui du ministère afin d'être en mesure de présenter vos plans officiels ou des modifications à ces derniers dans les délais requis.

Merci de votre soutien indéfectible envers votre collectivité et de votre engagement et collaboration envers une gestion de la croissance efficace dans la région élargie du Golden Horseshoe. Encore une fois, je vous encourage à faire appel au personnel du ministère aux diverses étapes du processus menant à la conformité. N'hésitez pas à communiquer avec Sandra Bickford, sous-ministre adjointe du Secrétariat des initiatives de croissance de l'Ontario, à Sandra.Bickford@ontario.ca pour toute question ou préoccupation concernant le document **En plein essor** ou les politiques afférentes.

Recevez mes plus sincères salutations.

Le ministre,



Steve Clark

- c. Bruce Macgregor, Directeur général
Paul Freeman, Urbaniste en chef, Aménagement du territoire et développement économique