



Copper Creek Drive Traffic Calming Project Update

(Ward 7)

**July 8, 2021
Development Services Committee**



Copper Creek Drive Traffic Calming Project Update

- Existing Roadway Characteristics
- Project Limits
- Road Reconfiguration (Road Diet) Elements & Benefits
- Pedestrian Crossover (PXO)
- Project Timeline

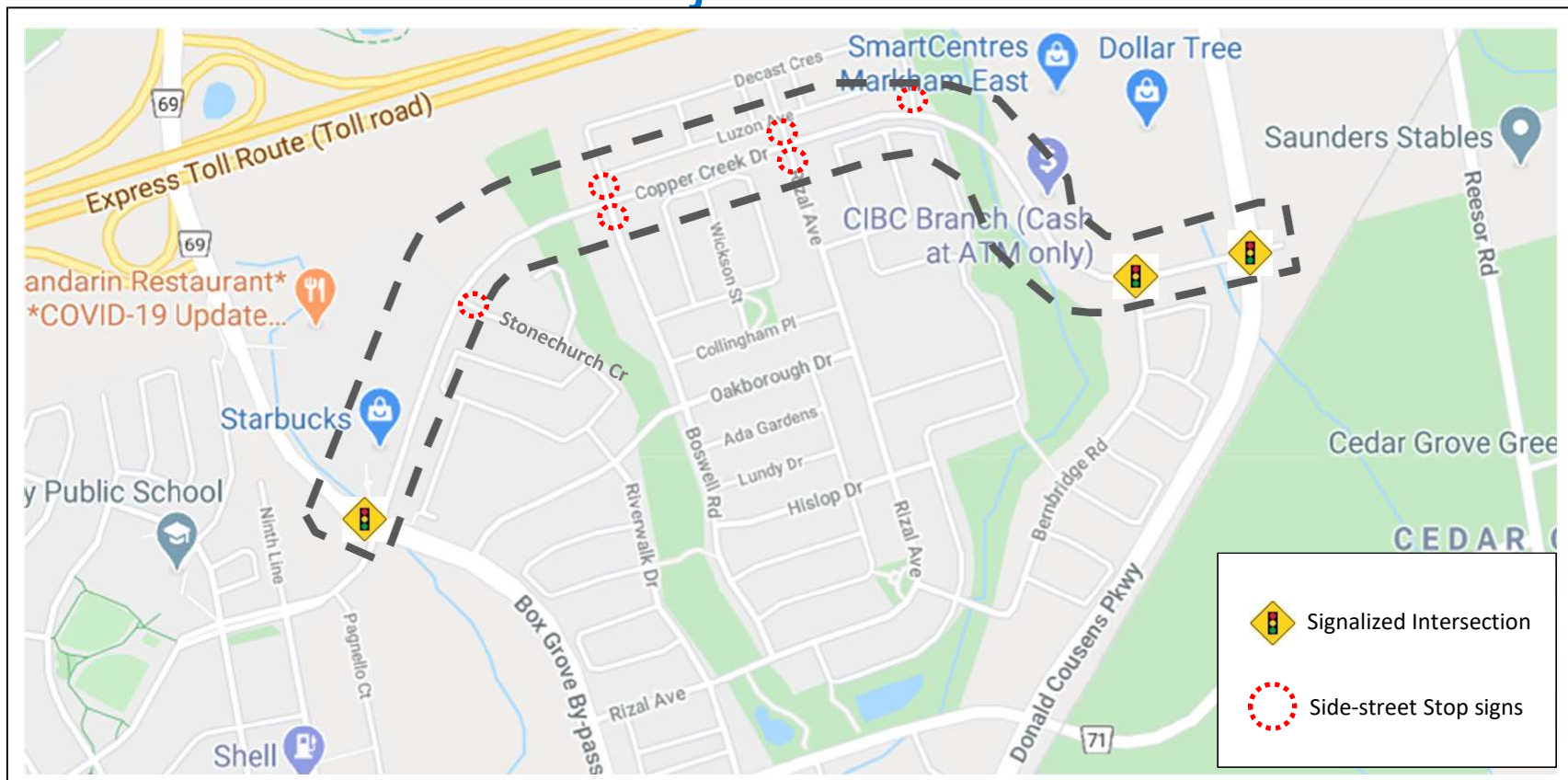


Existing Roadway Characteristics

- Existing Cross-Section
 - 4-lane major collector road with bike lanes & sidewalks on both sides, between Box Grove Bypass and Donald Cousens Parkway
 - Street parking is prohibited, except for the lay-by parking areas on the north side, between Boswell Dr. and Decast Cres. (E)
- Traffic Volume
 - 6,000 - 8,000 vehicles per day
 - 400 - 500 vehicles in the peak hour & peak direction
- Vehicle Speed
 - Posted speed limit is 40 km/h east of Bernbridge and 50 km/h west of Bernbridge
 - Vehicular operating speeds of 60 - 70 km/h are common
- Intersection Traffic Control
 - Traffic signals at Box Grove By-pass, Donald Cousens Parkway and Bernbridge Drive
 - Other intersections along the corridor do not meet MTO criteria for all-way stop controls
 - Very low traffic volume approaching from the side streets

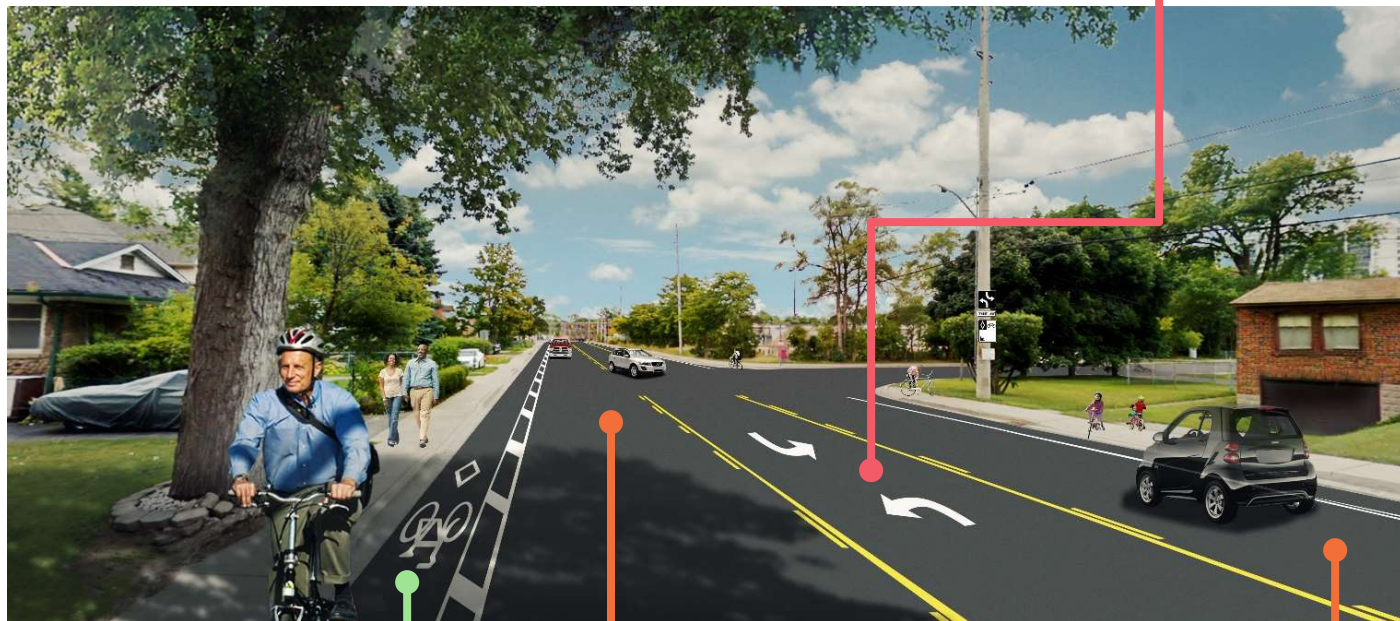


Project Limits





Road Diet Traffic Calming Elements



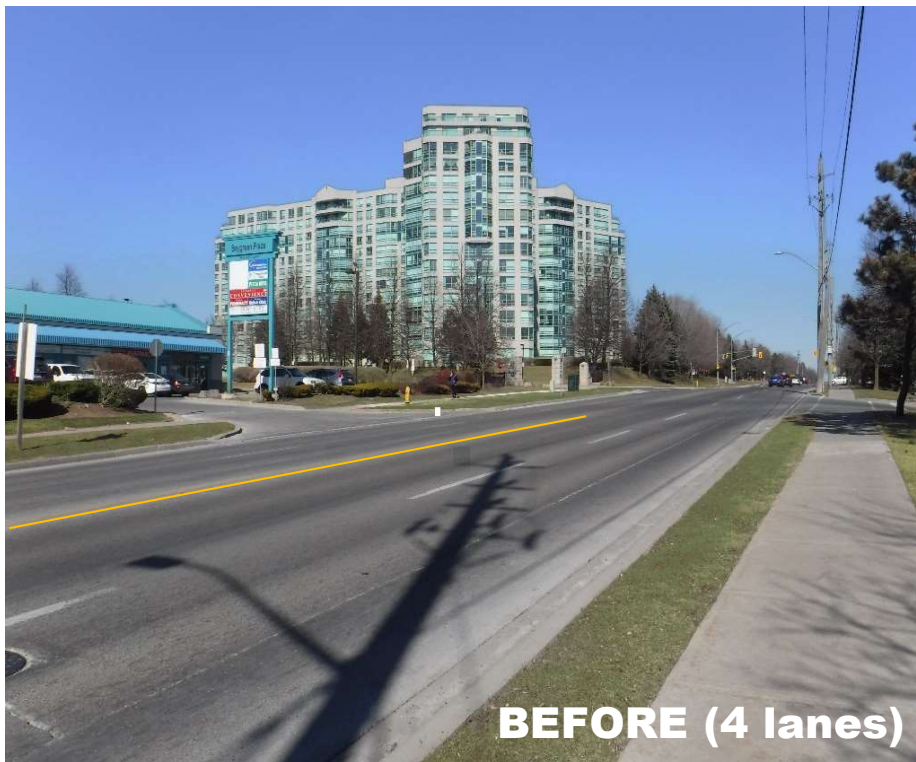
Two-way left turn lane

Buffered Bicycle Lane in each direction

Single travel lane in each direction



Road Diet Example (Conceptual)





Road Diet Benefits

- Minimal traffic capacity impact with lane reconfiguration
 - FHWA's *Road Diet Informational Guide* recommends considering 4-to-3 lane reductions on roadways with **less than 20,000 vehicles per day**.
 - TODAY → 6,000 - 8,000 vehicles per day ✓
- Reduced speeding potential
- Safer traffic operations with introduction of centre left-turn lane
- Improves safety and connectivity of existing active transportation facilities
- Increase safe pedestrian crossing opportunities



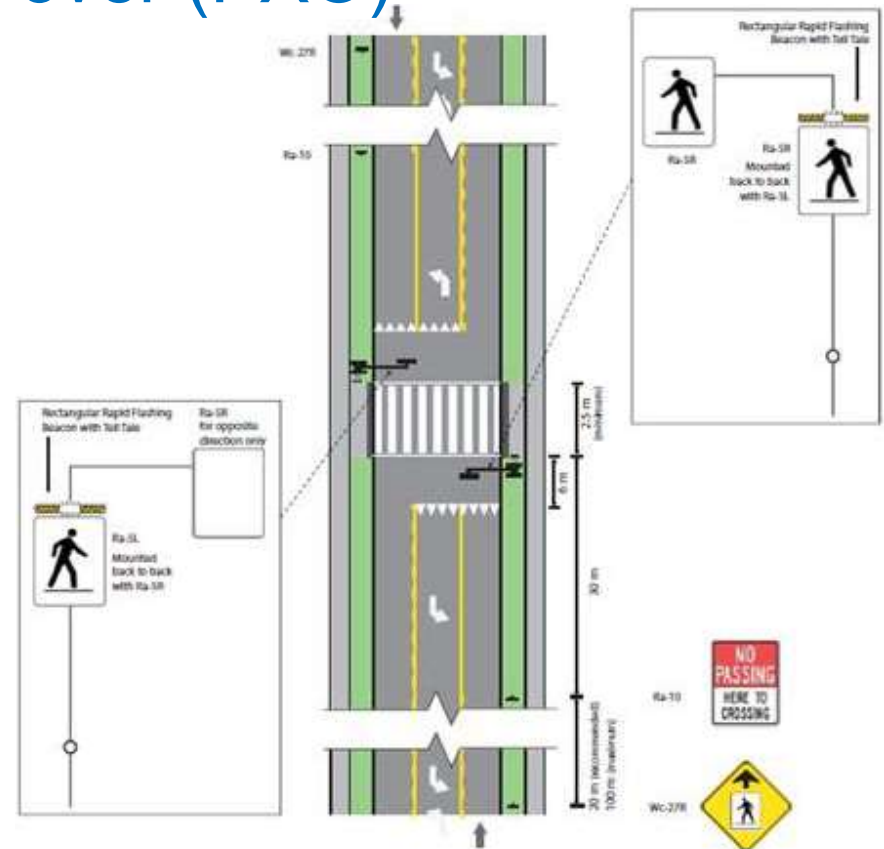
Pedestrian Cross-over (PXO)





Pedestrian Cross-over (PXO)

- Pedestrian Crossover **Type “B”** being implemented, consisting of the following elements:
 - Boulevard and overhead signage
 - Improved street-lighting
 - Pedestrian actuated, rapid flashing beacons
 - When rapid flashing beacons are activated, vehicles must stop to allow pedestrians to cross
- Meets accessibility requirements (AODA)
- Temporary educational signage for pedestrians will be provided at the crossing for approximately 1 month
- City PXO portal: www.markham.ca/PXO





Project Timeline

- Civil & concrete works – **Completed May 2021**
- Pavement micro-resurfacing & pavement markings – **TBC early July 2021**
- Pedestrian Cross-over (PXO) – **In progress; TBC early July 2021**
- Evaluation – **TBC 2021 & 2022**, pending relaxation of COVID restrictions